

Converting Colors

Hex(AD8A56)

Have a look what the booklet for
Hex(AD8A56) contains.

Hex(AD8A56)	3
<i>Conversions</i>	4
<i>Details</i>	6
<i>Harmonies</i>	11
<i>Previews</i>	23
<i>Color Blindness Simulation</i>	26
<i>CSS Examples</i>	29

Color

Hex(AD8A56)

Conversions

Conversions Part 1

Format	Color
Hex	AD8A56
RGB	173, 138, 86
RGB Percent	68%, 54%, 34%
CMY	0.3216, 0.4588, 0.6627
CMYK	0.00, 0.20, 0.50, 0.32
HSL	36°, 35%, 51%
HSV	36°, 50%, 68%
XYZ	28.0018, 27.7331, 12.6813
YIQ	142.5370, 37.5520, -8.7520

Conversions

Conversions Part 2

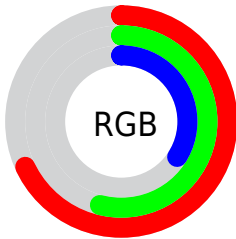
Format	Color
RYB	145, 173, 86
Decimal	11373142
CIELab	59.65, 6.64, 32.75
CIELCh	60, 33.420, 78.547
Yxy	27.7331, 0.4093, 0.4054
Android (android.graphics.Color)	4289563222 (0xFFAD8A56)
YUV	142.5370, -27.8727, 26.7161
Hunter-Lab	52.6622, 2.7539, 22.5863

Details

The Hex color **AD8A56** is a dark color, and the websafe version is hex **CC9966**. A complement of this color would be **5679AD**, and the grayscale version is **8F8F8F**.

A 20% lighter version of the original color is **E6BF89**, and **765827** is the 20% darker color. If you saturate the color by 10%, you get **AD8345**, and if you desaturate by 10%, it is **AD9167**.

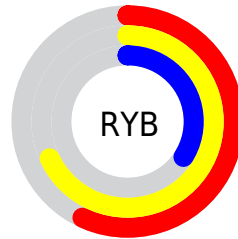
Distribution



Red (68%)

Green (54%)

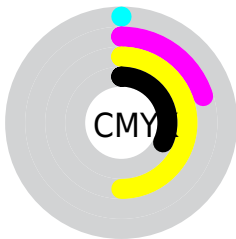
Blue (34%)



Red (57%)

Yellow (68%)

Blue (34%)

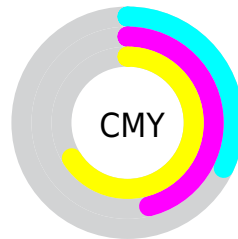


Cyan (0%)

Magenta (20%)

Yellow (50%)

Black (32%)



Cyan (32%)

Magenta (46%)

Yellow (66%)

Brightness & Saturation Gradients


These gradients show how the Hex color AD8A56 changes by changing the brightness by 10 percent. The first figure shows a shift by +10% for each color and the second figure -10%.

Similar to the brightness gradients but the following saturation gradients show a change of the Hex color AD8A56 by changing the saturation by 10% instead.

 AD8A56

 AD8A56

FFFFFF

 91713E

 E6BF89

 765827

 FFDBA3

 5C4110

 FFF8BF

 432B00

 FFFFDB

 2A1700

 FFFFF7

 0D0000

 000000

 AD8A56

 AD8A56

 AD8345

 AD9167

 AD7C33

 AD9879

 AD7522

 AD9F8A

 AD6E11

 ADA69B

 AD6700

 ADADAD

 ADB4BE

 ADBBCF

 ADC2E0

 ADC9F2

Harmonies

Analogous

The Analogous color harmony consists of three colors that are next to each other on the color wheel.



C18065



AD8A56



919457

Triad

The Triadic color harmony groups three colors that are evenly spaced from another and form a triangle on the color wheel.



AD8A56



1C9FA1



A982B7

Complementary

The Complementary color scheme is a pair of colors which are on the opposite of each other on the color wheel.



AD8A56



5679AD

Split Complementary

Split-complementary colors differ from the complementary color scheme. The scheme consists of three colors, the original color and two neighbors of the complement color.



828CC7



AD8A56



1A9CBB

Square

The Square scheme is like the rectangle color scheme, but the four colors are evenly spaced on the color wheel.



AD8A56



499F83



5196C9



C27A9C

Rectangle

The Rectangle color scheme consists of four colors that form a rectangle on the color wheel.



AD8A56



7B9961



5196C9



9E85BE

Sweetspot

The Sweet Spot groups the original color and five complimentary colors.



AD8A56



E0D3BF



AD567A



70685C



F0F0F0



707070

Same Dimension

The Same Dimension uses a secret algorithm to generate beautiful new colors.



AD8A56



E0AA5A



A6AD56



57534E



965A00



170E00

Inverse Universe

The Inverse Universe completely reimagines the original color for something new.



5679AD



5A90E0



5D56AD



4E5257



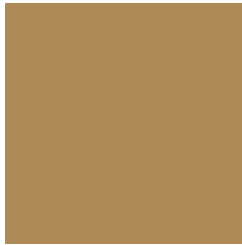
003D96



000917

Previews

White Background



This preview shows how the Hex color AD8A56 looks on a white background.

Color Contrast Check

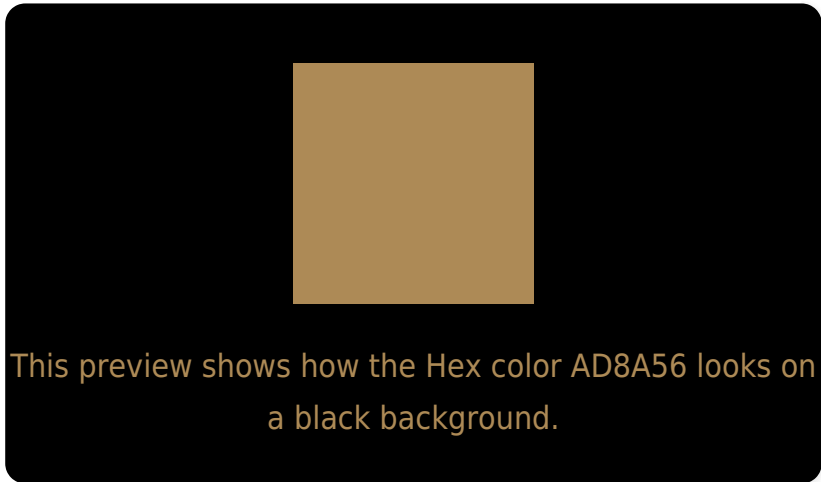
Large Text (above 18pt) WCAG AA ✓ Pass

Any Text WCAG AA × Fail

Large Text (above 18pt) WCAG AAA × Fail

Any Text WCAG AAA × Fail

Black Background



Color Contrast Check

Large Text (above 18pt) WCAG AA ✓ Pass

Any Text WCAG AA ✓ Pass

Large Text (above 18pt) WCAG AAA ✓ Pass

Any Text WCAG AAA × Fail

If you want to check with other color combinations, try the [Color Contrast Checker](#).

Hex AD8A56 Background



This preview shows how black text looks on a background with the Hex color AD8A56.



This preview shows how white text looks on a background with the Hex color AD8A56.

Color Blindness Simulation

Color vision deficiency is a very complex topic, and I could not describe the different causes any better than Wikipedia does, so if you want to learn more, you should check out their [article about color blindness](#).


Dichromacy



Original Color
AD8A56

Protanopia
9D9058

Deuteranopia
AF8956

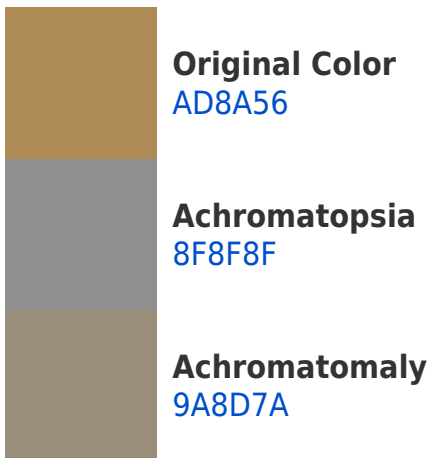


Tritanopia
B2838D

Trichromacy



Monochromacy



CSS Examples

Text

The CSS property to change the color of the text to Hex AD8A56 is called "color". The color property can be set on classes, ids or directly on the HTML element.

This example shows how text in the color #AD8A56 looks like.

```
.text, #text, p{  
  color:#AD8A56  
}
```

If you want to add a text shadow in that color use the text-shadow property, you can generate a text shadow directly with our [CSS Text Shadow Generator](#).

Here you see how black text with a 4 pixel #AD8A56 colored shadow looks like.

```
.shadow{ text-shadow: 4px 4px 2px #AD8A56  
}
```

Border

The CSS property to change the border of an element to Hex AD8A56 is called "border". The border property can be set on classes, ids or directly on the HTML element.

This example shows the color as border, it can be applied via the CSS property "border" or "border-color".

```
.border, #border, table{ border:4px solid  
#AD8A56 }
```

If only the border color should be changed use the property `border-color`.

```
.border{ border-color:#AD8A56 }
```

If you want to add a box shadow in that color use:

Here you see how a box with a 4 pixel #AD8A56 colored shadow looks like.

```
.boxshadow{ -moz-box-shadow:4px 4px 4px  
4px #AD8A56; -webkit-box-shadow:4px 4px  
4px 4px #AD8A56; box-shadow:4px 4px 4px  
4px #AD8A56 }
```

Background

The CSS property to change the background color of an element to Hex AD8A56 is called "background". The background property can be set on classes, ids or directly on the HTML element.

```
.background, #background, body{  
background:#AD8A56 }
```

If only the background color should be changed can be used:

```
.background{ background-color:#AD8A56 }
```

This example shows the color as background, it is applied via the CSS property "background".

To optimize and compress your CSS code, you can use our [online CSS compressor and optimizer](#) based on csstidy. If you want to create a linear or radial gradient as background or border, check our [CSS Gradient Generator](#).

Hey! You found this booklet interesting? Support Converting Colors with the new Membership Option!

The pro membership hides all ads, plus gives you double the colors in the color bucket, and more awesome pro features!

[Learn more, Memberships starting at \\$2.50/m!](#)

**Follow me
on Twitter!**

@ConvertingColor