

Converting Colors

Hex(AD8D8C)

Have a look what the booklet for
Hex(AD8D8C) contains.

Hex(AD8D8C)	3
<i>Conversions</i>	4
<i>Details</i>	6
<i>Harmonies</i>	11
<i>Previews</i>	23
<i>Color Blindness Simulation</i>	26
<i>CSS Examples</i>	29

Color

Hex(AD8D8C)

Conversions

Conversions Part 1

Format	Color
Hex	AD8D8C
RGB	173, 141, 140
RGB Percent	68%, 55%, 55%
CMY	0.3216, 0.4471, 0.4510
CMYK	0.00, 0.18, 0.19, 0.32
HSL	2°, 17%, 61%
HSV	2°, 19%, 68%
XYZ	31.4921, 29.8274, 28.9084
YIQ	150.4540, 19.3930, 6.4730

Conversions

Conversions Part 2

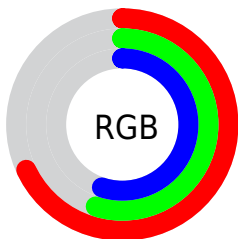
Format	Color
R _Y B	173, 141, 140
Decimal	11373964
CIE Lab	61.51, 11.91, 5.09
CIE LCh	62, 12.952, 23.119
Yxy	29.8274, 0.3490, 0.3306
Android (android.graphics.Color)	4289564044 (0xFFAD8D8C)
YUV	150.4540, -5.1538, 19.7728
Hunter-Lab	54.6145, 7.3522, 6.8469

Details

The Hex color **AD8D8C** is a dark color, and the websafe version is hex **CC9999**. A complement of this color would be **8CACAD**, and the grayscale version is **969696**.

A 20% lighter version of the original color is **E5C3C1**, and **785B5A** is the 20% darker color. If you saturate the color by 10%, you get **AD7C7B**, and if you desaturate by 10%, it is **AD9E9D**.

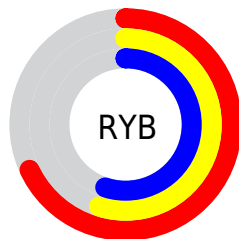
Distribution



Red (68%)

Green (55%)

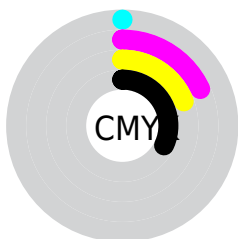
Blue (55%)



Red (68%)

Yellow (55%)

Blue (55%)

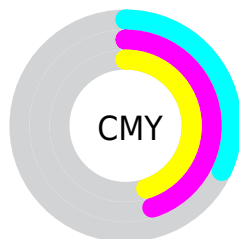


Cyan (0%)

Magenta (18%)

Yellow (19%)

Black (32%)



Cyan (32%)

Magenta (45%)

Yellow (45%)

Brightness & Saturation Gradients

These gradients show how the Hex color AD8D8C changes by changing the brightness by 10 percent. The first figure shows a shift by +10% for each color and the second figure -10%.

Similar to the brightness gradients but the following saturation gradients show a change of the Hex color AD8D8C by changing the saturation by 10% instead.

 AD8D8C

 AD8D8C

FFFFFF

 927373

 E5C3C1

 785B5A

 FFDFDD

 5F4343

 FFFBFA

 472D2D

 301818

 1D0000

 000000

 AD8D8C

 AD8D8C

 AD7C7B

 AD9E9D

 AD6B69

 ADAFAF

 AD5B58

 ADBFC0

 AD4A47

 ADD0D1

 AD3936

 ADE1E3

 AD2824

 ADF2F4

 AD1813

 ADFFFF

 AD0702

 AD0500

Harmonies

Analogous

The Analogous color harmony consists of three colors that are next to each other on the color wheel.



AA8D98



AD8D8C



A98F83

Triad

The Triadic color harmony groups three colors that are evenly spaced from another and form a triangle on the color wheel.



AD8D8C



879A86



8596AB

Complementary

The Complementary color scheme is a pair of colors which are on the opposite of each other on the color wheel.



AD8D8C



8CACAD

Split Complementary

Split-complementary colors differ from the complementary color scheme. The scheme consists of three colors, the original color and two neighbors of the complement color.



7A99A6



AD8D8C



7C9B91

Square

The Square scheme is like the rectangle color scheme, but the four colors are evenly spaced on the color wheel.



AD8D8C



94977F



779B9D



9392A9

Rectangle

The Rectangle color scheme consists of four colors that form a rectangle on the color wheel.



AD8D8C



A4927F



779B9D



8197AA

Sweetspot

The Sweet Spot groups the original color and five complimentary colors.



AD8D8C



E0D3D3



AD8CAC



706968



F0F0F0



707070

Same Dimension

The Same Dimension uses a secret algorithm to generate beautiful new colors.



AD8D8C



E0AEAD



AD9D8C



574E4E



960500



170100

Inverse Universe

The Inverse Universe completely reimagines the original color for something new.



8CACAD



ADDFE0



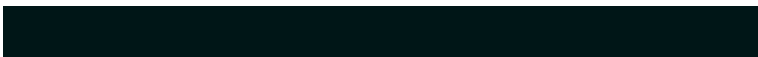
8C9CAD



4E5657



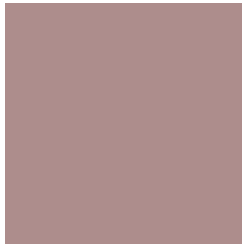
009296



001617

Previews

White Background



This preview shows how the Hex color AD8D8C looks on a white background.

Color Contrast Check

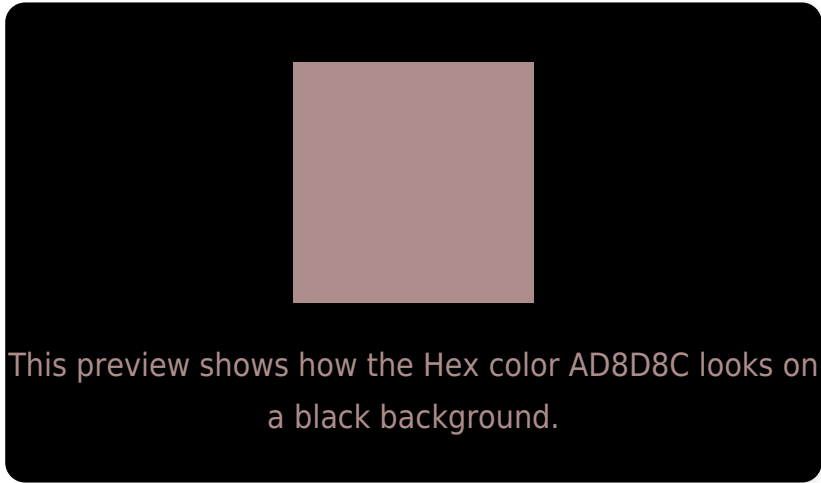
Large Text (above 18pt) WCAG AA ✓ Pass

Any Text WCAG AA ✗ Fail

Large Text (above 18pt) WCAG AAA ✗ Fail

Any Text WCAG AAA ✗ Fail

Black Background



Color Contrast Check

Large Text (above 18pt) WCAG AA ✓ Pass

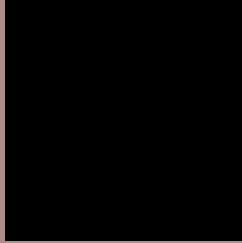
Any Text WCAG AA ✓ Pass

Large Text (above 18pt) WCAG AAA ✓ Pass

Any Text WCAG AAA × Fail

If you want to check with other color combinations, try the [Color Contrast Checker](#).

Hex AD8D8C Background



This preview shows how black text looks on a background with the Hex color AD8D8C.



This preview shows how white text looks on a background with the Hex color AD8D8C.

Color Blindness Simulation

Color vision deficiency is a very complex topic, and I could not describe the different causes any better than Wikipedia does, so if you want to learn more, you should check out their [article about color blindness](#).

Dichromacy



Original Color
AD8D8C

Protanopia
989490

Deuteranopia
A6908C



Tritanopia
AE8B96

Trichromacy



Original Color
AD8D8C

Protanomaly
A0918F

Deuteranomaly
A98F8C

Tritanomaly
AE8C92

Monochromacy



Original Color
AD8D8C

Achromatopsia
969696

Achromatomaly
9E9392

CSS Examples

Text

The CSS property to change the color of the text to Hex AD8D8C is called "color". The color property can be set on classes, ids or directly on the HTML element.

This example shows how text in the color #AD8D8C looks like.

```
.text, #text, p{  
    color:#AD8D8C  
}
```

If you want to add a text shadow in that color use the text-shadow property, you can generate a text shadow directly with our [CSS Text Shadow Generator](#).

Here you see how black text with a 4 pixel #AD8D8C colored shadow looks like.

```
.shadow{ text-shadow: 4px 4px 2px #AD8D8C
}
```

Border

The CSS property to change the border of an element to Hex AD8D8C is called "border". The border property can be set on classes, ids or directly on the HTML element.

This example shows the color as border, it can be applied via the CSS property "border" or "border-color".

```
.border, #border, table{ border:4px solid
#AD8D8C }
```

If only the border color should be changed use the property `border-color`.

```
.border{ border-color:#AD8D8C }
```

If you want to add a box shadow in that color use:

Here you see how a box with a 4 pixel #AD8D8C colored shadow looks like.

```
.boxshadow{ -moz-box-shadow:4px 4px 4px  
4px #AD8D8C; -webkit-box-shadow:4px 4px  
4px 4px #AD8D8C; box-shadow:4px 4px 4px  
4px #AD8D8C }
```

Background

The CSS property to change the background color of an element to Hex AD8D8C is called "background". The background property can be set on classes, ids or directly on the HTML element.

```
.background, #background, body{  
background:#AD8D8C }
```

If only the background color should be changed can be used:

```
.background{ background-color:#AD8D8C }
```

This example shows the color as background, it is applied via the CSS property "background".

To optimize and compress your CSS code, you can use our [online CSS compressor and optimizer](#) based on csstidy. If you want to create a linear or radial gradient as background or border, check our [CSS Gradient Generator](#).

Hey! You found this booklet interesting? Support Converting Colors with the new Membership Option!

The pro membership hides all ads, plus gives you double the colors in the color bucket, and more awesome pro features!

[Learn more, Memberships starting at \\$2.50/m!](#)

**Follow me
on Twitter!**

@ConvertingColor