

Converting Colors

Hex(AD919B)

Have a look what the booklet for
Hex(AD919B) contains.

| | |
|--|----|
| Hex(AD919B) | 3 |
| <i>Conversions</i> | 4 |
| <i>Details</i> | 6 |
| <i>Harmonies</i> | 11 |
| <i>Previews</i> | 23 |
| <i>Color Blindness Simulation</i> | 26 |
| <i>CSS Examples</i> | 29 |

Color

Hex(AD919B)

Conversions

Conversions Part 1

| Format | Color |
|-------------|---------------------------|
| Hex | AD919B |
| RGB | 173, 145, 155 |
| RGB Percent | 68%, 57%, 61% |
| CMY | 0.3216, 0.4314, 0.3922 |
| CMYK | 0.00, 0.16, 0.10, 0.32 |
| HSL | 339°, 15%, 62% |
| HSV | 339°, 16%, 68% |
| XYZ | 33.2754, 31.5016, 35.3370 |
| YIQ | 154.5120, 13.4780, 9.0460 |

Conversions

Conversions Part 2

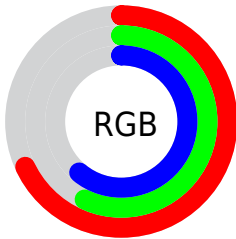
| Format | Color |
|-------------------------------------|---|
| RYB | 173, 145, 155 |
| Decimal | 11375003 |
| CIELab | 62.93, 12.19, -1.36 |
| CIElCh | 63, 12.262, 353.642 |
| Yxy | 31.5016, 0.3324, 0.3147 |
| Android (android.graphics.Color) | 4289565083 (0xFFAD919B) |
| YUV | 154.5120, 0.2406, 16.2140 |
| Hunter-Lab | 56.1263, 7.6056, 1.9596 |

Details

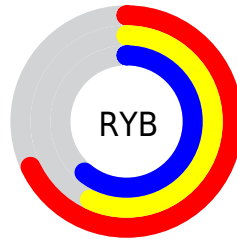
The Hex color **AD919B** is a light color, and the websafe version is hex **CC9999**. A complement of this color would be **91ADA3**, and the grayscale version is **9B9B9B**.

A 20% lighter version of the original color is **E5C7D1**, and **785E68** is the 20% darker color. If you saturate the color by 10%, you get **AD8090**, and if you desaturate by 10%, it is **ADA2A6**.

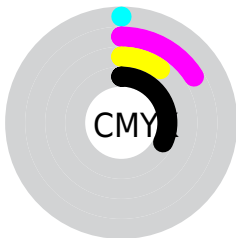
Distribution



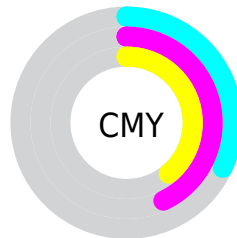
- Red (68%)
- Green (57%)
- Blue (61%)



- Red (68%)
- Yellow (57%)
- Blue (61%)



- Cyan (0%)
- Magenta (16%)
- Yellow (10%)
- Black (32%)



- Cyan (32%)
- Magenta (43%)
- Yellow (39%)

Brightness & Saturation Gradients

These gradients show how the Hex color AD919B changes by changing the brightness by 10 percent. The first figure shows a shift by +10% for each color and the second figure -10%.

Similar to the brightness gradients but the following saturation gradients show a change of the Hex color AD919B by changing the saturation by 10% instead.

 AD919B

 AD919B

FFFFFF

 927781


 E5C7D1

 785E68

 FFE3EE

 5F4750

 473039

 311B24

 1D010E

 000000

 AD919B

 AD919B

 AD8090

 ADA2A6

 AD6E85

 ADB4B1

 AD5D7A

 ADC5BC

 AD4C6F

 ADD6C7

 AD3A63

 ADE8D3

 AD2958

 ADF9DE

 AD184D

 ADFFE9

 AD0742

 ADFFF4

 AD003E

 ADFFFF

Harmonies

Analogous

The Analogous color harmony consists of three colors that are next to each other on the color wheel.



A493A5



AD919B



B09190

Triad

The Triadic color harmony groups three colors that are evenly spaced from another and form a triangle on the color wheel.



AD919B



989A84



809DA9

Complementary

The Complementary color scheme is a pair of colors which are on the opposite of each other on the color wheel.



AD919B



91ADA3

Split Complementary

Split-complementary colors differ from the complementary color scheme. The scheme consists of three colors, the original color and two neighbors of the complement color.



7C9FA1



AD919B



8B9D8B

Square

The Square scheme is like the rectangle color scheme, but the four colors are evenly spaced on the color wheel.



AD919B



A39783



819F95



8A9AAE

Rectangle

The Rectangle color scheme consists of four colors that form a rectangle on the color wheel.



AD919B



AE928A



819F95



7E9EA7

Sweetspot

The Sweet Spot groups the original color and five complimentary colors.



AD919B



E0D5D9



A391AD



70696C



F0F0F0



707070

Same Dimension

The Same Dimension uses a secret algorithm to generate beautiful new colors.



AD919B



E0B6C5



AD9591



574E51



960036



170008

Inverse Universe

The Inverse Universe completely reimagines the original color for something new.



AD919B



E0B6C5



91A9AD



574E51



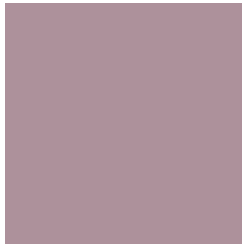
960036



170008

Previews

White Background



This preview shows how the Hex color AD919B looks on a white background.

Color Contrast Check

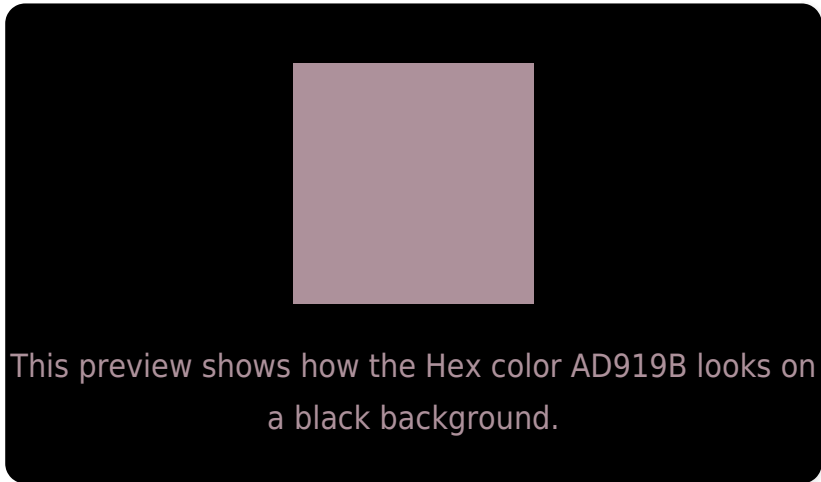
Large Text (above 18pt) WCAG AA × Fail

Any Text WCAG AA × Fail

Large Text (above 18pt) WCAG AAA × Fail

Any Text WCAG AAA × Fail

Black Background



Color Contrast Check

Large Text (above 18pt) WCAG AA ✓ Pass

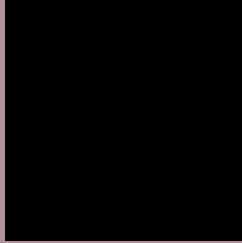
Any Text WCAG AA ✓ Pass

Large Text (above 18pt) WCAG AAA ✓ Pass

Any Text WCAG AAA ✓ Pass

If you want to check with other color combinations, try the [Color Contrast Checker](#).

Hex AD919B Background



This preview shows how black text looks on a background with the Hex color AD919B.



This preview shows how white text looks on a background with the Hex color AD919B.

Color Blindness Simulation

Color vision deficiency is a very complex topic, and I could not describe the different causes any better than Wikipedia does, so if you want to learn more, you should check out their [article about color blindness](#).


Dichromacy



Original Color
AD919B

Protanopia
99989F

Deuteranopia
A6949A



Tritanopia
AD919C

Trichromacy



Original Color
AD919B

Protanomaly
A0959E

Deuteranomaly
A9939A

Tritanomaly
AD919C

Monochromacy



Original Color
AD919B

Achromatopsia
9B9B9B

Achromatomaly
A2979B

CSS Examples

Text

The CSS property to change the color of the text to Hex AD919B is called "color". The color property can be set on classes, ids or directly on the HTML element.

This example shows how text in the color #AD919B looks like.

```
.text, #text, p{  
    color:#AD919B  
}
```

If you want to add a text shadow in that color use the text-shadow property, you can generate a text shadow directly with our [CSS Text Shadow Generator](#).

Here you see how black text with a 4 pixel #AD919B colored shadow looks like.

```
.shadow{ text-shadow: 4px 4px 2px #AD919B
}
```

Border

The CSS property to change the border of an element to Hex AD919B is called "border". The border property can be set on classes, ids or directly on the HTML element.

This example shows the color as border, it can be applied via the CSS property "border" or "border-color".

```
.border, #border, table{ border:4px solid
#AD919B }
```

If only the border color should be changed use the property `border-color`.

```
.border{ border-color:#AD919B }
```

If you want to add a box shadow in that color use:

Here you see how a box with a 4 pixel #AD919B colored shadow looks like.

```
.boxshadow{ -moz-box-shadow:4px 4px 4px  
4px #AD919B; -webkit-box-shadow:4px 4px  
4px 4px #AD919B; box-shadow:4px 4px 4px  
4px #AD919B }
```

Background

The CSS property to change the background color of an element to Hex AD919B is called "background". The background property can be set on classes, ids or directly on the HTML element.

```
.background, #background, body{  
background:#AD919B }
```

If only the background color should be changed can be used:

```
.background{ background-color:#AD919B }
```

This example shows the color as background, it is applied via the CSS property "background".

To optimize and compress your CSS code, you can use our [online CSS compressor and optimizer](#) based on csstidy. If you want to create a linear or radial gradient as background or border, check our [CSS Gradient Generator](#).

Hey! You found this booklet interesting? Support Converting Colors with the new Membership Option!

The pro membership hides all ads, plus gives you double the colors in the color bucket, and more awesome pro features!

[Learn more, Memberships starting at \\$2.50/m!](#)

**Follow me
on Twitter!**

@ConvertingColor