

# Converting Colors

Hex(AE5A53)

Have a look what the booklet for  
Hex(AE5A53) contains.

<b>Hex(AE5A53)</b> .....	3
<b><i>Conversions</i></b> .....	4
<b><i>Details</i></b> .....	6
<b><i>Harmonies</i></b> .....	11
<b><i>Previews</i></b> .....	23
<b><i>Color Blindness Simulation</i></b> .....	26
<b><i>CSS Examples</i></b> .....	29

# Color

Hex(AE5A53)

# Conversions

## Conversions Part 1

Format	Color
Hex	AE5A53
RGB	174, 90, 83
RGB Percent	68%, 35%, 33%
CMY	0.3176, 0.6471, 0.6745
CMYK	0.00, 0.48, 0.52, 0.32
HSL	5°, 36%, 50%
HSV	5°, 52%, 68%
XYZ	22.6731, 16.9355, 10.2575
YIQ	114.3180, 52.3110, 15.6310

# Conversions

## Conversions Part 2

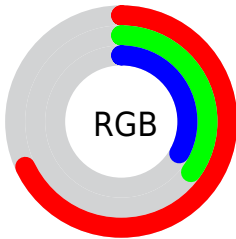
<b>Format</b>	<b>Color</b>
<b>RYB</b>	174, 91, 83
Decimal	11426387
CIELab	48.18, 33.46, 19.65
CIELCh	48, 38.805, 30.422
Yxy	16.9355, 0.4547, 0.3396
Android (android.graphics.Color)	4289616467 (0xFFAE5A53)
YUV	114.3180, -15.4398, 52.3411
Hunter-Lab	41.1528, 26.3268, 14.0287

# Details

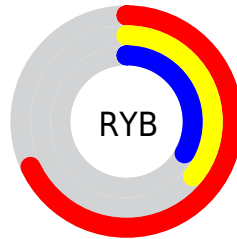
The Hex color **AE5A53** is a dark color, and the websafe version is hex **CC6666**. A complement of this color would be **53A7AE**, and the grayscale version is **727272**.

A 20% lighter version of the original color is **E98E85**, and **752926** is the 20% darker color. If you saturate the color by 10%, you get **AE4A42**, and if you desaturate by 10%, it is **AE6A64**.

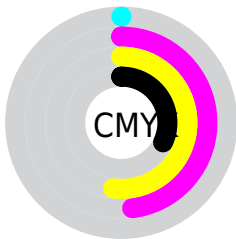
# Distribution



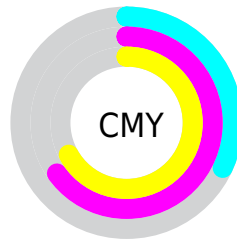
- Red (68%)
- Green (35%)
- Blue (33%)



- Red (68%)
- Yellow (36%)
- Blue (33%)



- Cyan (0%)
- Magenta (48%)
- Yellow (52%)
- Black (32%)



- Cyan (32%)
- Magenta (65%)
- Yellow (67%)

# Brightness & Saturation Gradients

These gradients show how the Hex color AE5A53 changes by changing the brightness by 10 percent. The first figure shows a shift by +10% for each color and the second figure -10%.

Similar to the brightness gradients but the following saturation gradients show a change of the Hex color AE5A53 by changing the saturation by 10% instead.



 AE5A53

 AE5A53

FFFFFF

 91413C

 E98E85

 752926

 FFA99F

 5A0F12

 FFC4BA

 3F0000

 FFE1D5

 270001

 FFFEF2

 000000

 AE5A53

 AE5A53

 AE4A42

 AE6A64

 AE3A30

 AE7A76

 AE2A1F

 AE8A87

 AE1A0D

 AE9A99

 AE0D00

 AEAAAA

 AEBABB

 AECACD

 AEDADE

 AEEBF0

# Harmonies

## Analogous

The Analogous color harmony consists of three colors that are next to each other on the color wheel.



AE5673



AE5A53



9F653A

# Triad

The Triadic color harmony groups three colors that are evenly spaced from another and form a triangle on the color wheel.



AE5A53



398051



3676B4

# Complementary

The Complementary color scheme is a pair of colors which are on the opposite of each other on the color wheel.



AE5A53



53A7AE

# Split Complementary

Split-complementary colors differ from the complementary color scheme. The scheme consists of three colors, the original color and two neighbors of the complement color.



007EAB



AE5A53



008372

# Square

The Square scheme is like the rectangle color scheme, but the four colors are evenly spaced on the color wheel.



AE5A53



647A37



008293



756AAB

# Rectangle

The Rectangle color scheme consists of four colors that form a rectangle on the color wheel.



AE5A53



8F6D30



008293



0579B3



# Sweetspot

The Sweet Spot groups the original color and five complimentary colors.



AE5A53



E3C1BF



AE53A8



735F5D



F2F2F2



737373



# Same Dimension

The Same Dimension uses a secret algorithm to generate beautiful new colors.



AE5A53



E35F54



AE8753



574F4E



960C00



170200



# Inverse Universe

The Inverse Universe completely reimagines the original color for something new.



53A7AE



54D8E3



537AAE



4E5657



008B96

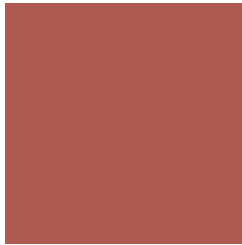


001517



# Previews

## White Background



This preview shows how the Hex color AE5A53 looks on a white background.

## Color Contrast Check

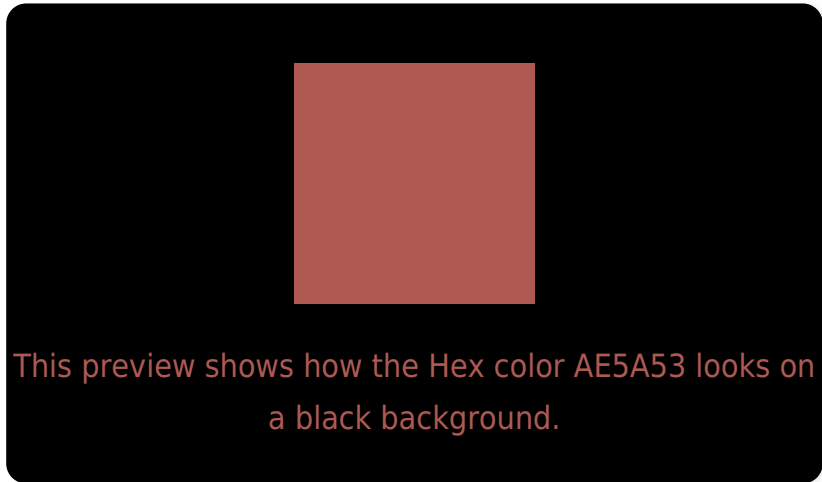
Large Text (above 18pt) WCAG AA ✓ Pass

Any Text WCAG AA ✓ Pass

Large Text (above 18pt) WCAG AAA ✓ Pass

Any Text WCAG AAA × Fail

# Black Background



## Color Contrast Check

Large Text (above 18pt) WCAG AA ✓ Pass

Any Text WCAG AA × Fail

Large Text (above 18pt) WCAG AAA × Fail

Any Text WCAG AAA × Fail

If you want to check with other color combinations, try the [Color Contrast Checker](#).



## Hex AE5A53 Background



This preview shows how black text looks on a background with the Hex color AE5A53.

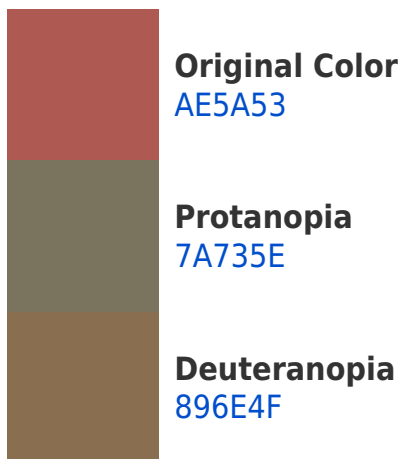



This preview shows how white text looks on a background with the Hex color AE5A53.

# Color Blindness Simulation

Color vision deficiency is a very complex topic, and I could not describe the different causes any better than Wikipedia does, so if you want to learn more, you should check out their [article about color blindness](#).

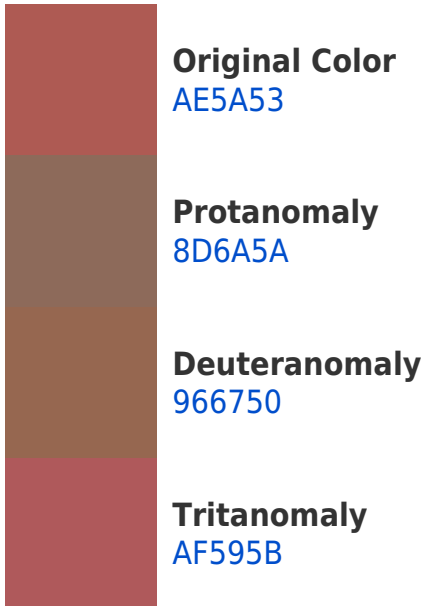
## Dichromacy





**Tritanopia**  
AF585F

# Trichromacy



# Monochromacy



# CSS Examples

## Text

The CSS property to change the color of the text to Hex AE5A53 is called "color". The color property can be set on classes, ids or directly on the HTML element.

This example shows how text in the color #AE5A53 looks like.

```
.text, #text, p{  
    color:#AE5A53  
}
```

If you want to add a text shadow in that color use the text-shadow property, you can generate a text shadow directly with our [CSS Text Shadow Generator](#).

Here you see how black text with a 4 pixel #AE5A53 colored shadow looks like.

```
.shadow{ text-shadow: 4px 4px 2px #AE5A53
}
```

## Border

The CSS property to change the border of an element to Hex AE5A53 is called "border". The border property can be set on classes, ids or directly on the HTML element.

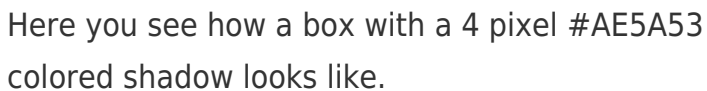
This example shows the color as border, it can be applied via the CSS property "border" or "border-color".

```
.border, #border, table{ border:4px solid
#AE5A53 }
```

If only the border color should be changed use the property `border-color`.

```
.border{ border-color:#AE5A53 }
```

If you want to add a box shadow in that color use:



Here you see how a box with a 4 pixel `#AE5A53` colored shadow looks like.

```
.boxshadow{ -moz-box-shadow:4px 4px 4px  
4px #AE5A53; -webkit-box-shadow:4px 4px  
4px 4px #AE5A53; box-shadow:4px 4px 4px  
4px #AE5A53 }
```

# Background

The CSS property to change the background color of an element to Hex AE5A53 is called "background". The background property can be set on classes, ids or directly on the HTML element.

```
.background, #background, body{  
background:#AE5A53 }
```

If only the background color should be changed can be used:

```
.background{ background-color:#AE5A53 }
```

This example shows the color as background, it is applied via the CSS property "background".

To optimize and compress your CSS code, you can use our [online CSS compressor and optimizer](#) based on csstidy. If you want to create a linear or radial gradient as background or border, check our [CSS Gradient Generator](#).



Hey! You found this booklet interesting? Support Converting Colors with the new Membership Option!

The pro membership hides all ads, plus gives you double the colors in the color bucket, and more awesome pro features!

**[Learn more, Memberships starting at \\$2.50/m!](#)**

**Follow me  
on Twitter!**

@ConvertingColor