

Converting Colors

Hex(AE605E)

Have a look what the booklet for
Hex(AE605E) contains.

Hex(AE605E)	3
<i>Conversions</i>	4
<i>Details</i>	6
<i>Harmonies</i>	11
<i>Previews</i>	23
<i>Color Blindness Simulation</i>	26
<i>CSS Examples</i>	29

Color

Hex(AE605E)

Conversions

Conversions Part 1

Format	Color
Hex	AE605E
RGB	174, 96, 94
RGB Percent	68%, 38%, 37%
CMY	0.3176, 0.6235, 0.6314
CMYK	0.00, 0.45, 0.46, 0.32
HSL	1°, 33%, 53%
HSV	1°, 46%, 68%
XYZ	23.6588, 18.1726, 12.8504
YIQ	119.0940, 47.1300, 15.9140

Conversions

Conversions Part 2

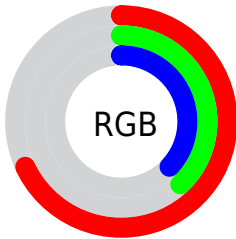
Format	Color
RYB	174, 96, 94
Decimal	11427934
CIELab	49.70, 31.31, 15.18
CIELCh	50, 34.800, 25.864
Yxy	18.1726, 0.4327, 0.3323
Android (android.graphics.Color)	4289618014 (0xFFAE605E)
YUV	119.0940, -12.3713, 48.1526
Hunter-Lab	42.6293, 24.4644, 11.9678

Details

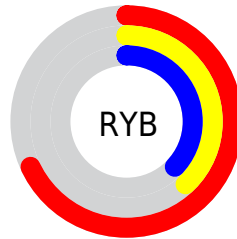
The Hex color **AE605E** is a dark color, and the websafe version is hex **CC6666**. A complement of this color would be **5EACAE**, and the grayscale version is **777777**.

A 20% lighter version of the original color is **E89490**, and **762F30** is the 20% darker color. If you saturate the color by 10%, you get **AE4F4D**, and if you desaturate by 10%, it is **AE716F**.

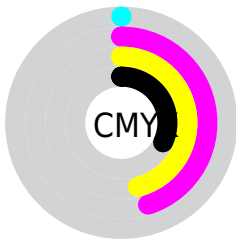
Distribution



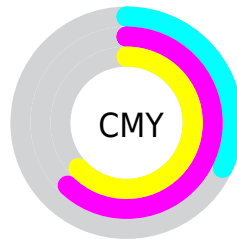
- Red (68%)
- Green (38%)
- Blue (37%)



- Red (68%)
- Yellow (38%)
- Blue (37%)



- Cyan (0%)
- Magenta (45%)
- Yellow (46%)
- Black (32%)



- Cyan (32%)
- Magenta (62%)
- Yellow (63%)

Brightness & Saturation Gradients

These gradients show how the Hex color AE605E changes by changing the brightness by 10 percent. The first figure shows a shift by +10% for each color and the second figure -10%.

Similar to the brightness gradients but the following saturation gradients show a change of the Hex color AE605E by changing the saturation by 10% instead.

 AE605E

 AE605E

FFFFFF

 924746

 E89490

 762F30

 FFAFAB

 5B171B

 FFCBC6

 410000

 FFE7E2

 2B0001

 000000

 AE605E

 AE605E

 AE4F4D

 AE716F

 AE3E3B

 AE8281

 AE2D2A

 AE9392

 AE1C18

 AEA4A4

 AE0B07

 AEB5B5

 AE0400

 AEC6C6

 AED7D8

 AEE8E9

 AEF9FB

Harmonies

Analogous

The Analogous color harmony consists of three colors that are next to each other on the color wheel.



AB5E7C



AE605E



A26946

Triad

The Triadic color harmony groups three colors that are evenly spaced from another and form a triangle on the color wheel.



AE605E



4B8254



3C7AB1

Complementary

The Complementary color scheme is a pair of colors which are on the opposite of each other on the color wheel.



AE605E



5EACAE

Split Complementary

Split-complementary colors differ from the complementary color scheme. The scheme consists of three colors, the original color and two neighbors of the complement color.



0082A6



AE605E



138571

Square

The Square scheme is like the rectangle color scheme, but the four colors are evenly spaced on the color wheel.



AE605E



6F7C3F



00858F



7370AB

Rectangle

The Rectangle color scheme consists of four colors that form a rectangle on the color wheel.



AE605E



94703C



00858F



227DAF

Sweetspot

The Sweet Spot groups the original color and five complimentary colors.



AE605E



E3C4C3



AE5EAD



73605F



F2F2F2



737373

Same Dimension

The Same Dimension uses a secret algorithm to generate beautiful new colors.



AE605E



E36966



AE875E



574E4E



960400



170100

Inverse Universe

The Inverse Universe completely reimagines the original color for something new.



5EACAE



66E0E3



5E85AE



4E5657



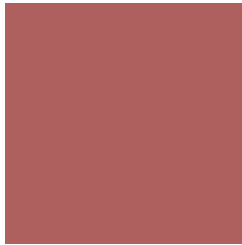
009396



001617

Previews

White Background



This preview shows how the Hex color AE605E looks on a white background.

Color Contrast Check

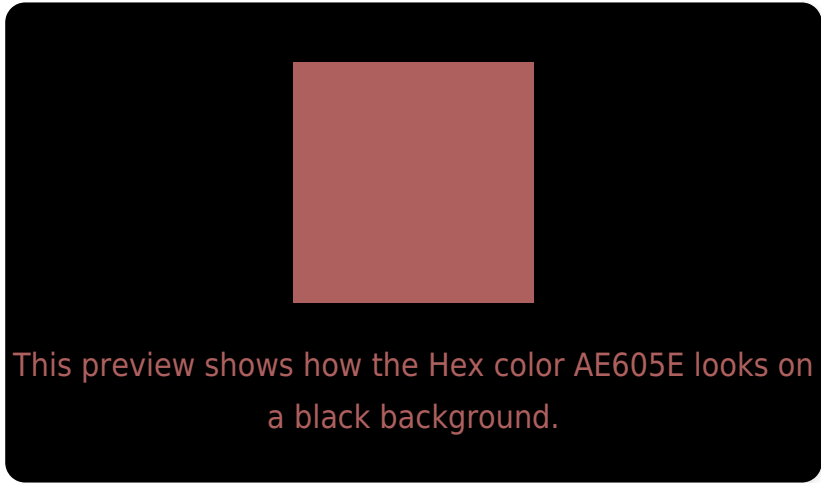
Large Text (above 18pt) WCAG AA ✓ Pass

Any Text WCAG AA ✓ Pass

Large Text (above 18pt) WCAG AAA ✓ Pass

Any Text WCAG AAA × Fail

Black Background



Color Contrast Check

Large Text (above 18pt) WCAG AA ✓ Pass

Any Text WCAG AA ✓ Pass

Large Text (above 18pt) WCAG AAA ✓ Pass

Any Text WCAG AAA × Fail

If you want to check with other color combinations, try the [Color Contrast Checker](#).

Hex AE605E Background



This preview shows how black text looks on a background with the Hex color AE605E.

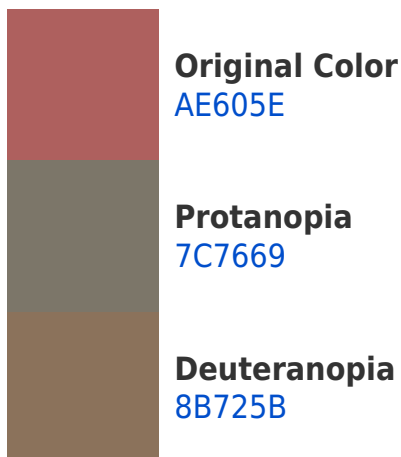


This preview shows how white text looks on a background with the Hex color AE605E.

Color Blindness Simulation

Color vision deficiency is a very complex topic, and I could not describe the different causes any better than Wikipedia does, so if you want to learn more, you should check out their [article about color blindness](#).

Dichromacy





Tritanopia
AF5F66

Trichromacy



Original Color
AE605E

Protanomaly
8E6E65

Deuteranomaly
986B5C

Tritanomaly
AF5F63

Monochromacy



Original Color
AE605E

Achromatopsia
777777

Achromatomaly
8B6F6E

CSS Examples

Text

The CSS property to change the color of the text to Hex AE605E is called "color". The color property can be set on classes, ids or directly on the HTML element.

This example shows how text in the color #AE605E looks like.

```
.text, #text, p{  
    color:#AE605E  
}
```

If you want to add a text shadow in that color use the text-shadow property, you can generate a text shadow directly with our [CSS Text Shadow Generator](#).

Here you see how black text with a 4 pixel #AE605E colored shadow looks like.

```
.shadow{ text-shadow: 4px 4px 2px #AE605E
}
```

Border

The CSS property to change the border of an element to Hex AE605E is called "border". The border property can be set on classes, ids or directly on the HTML element.

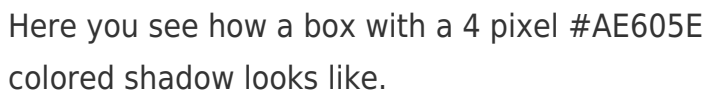
This example shows the color as border, it can be applied via the CSS property "border" or "border-color".

```
.border, #border, table{ border:4px solid
#AE605E }
```

If only the border color should be changed use the property `border-color`.

```
.border{ border-color:#AE605E }
```

If you want to add a box shadow in that color use:



Here you see how a box with a 4 pixel `#AE605E` colored shadow looks like.

```
.boxshadow{ -moz-box-shadow:4px 4px 4px  
4px #AE605E; -webkit-box-shadow:4px 4px  
4px 4px #AE605E; box-shadow:4px 4px 4px  
4px #AE605E }
```

Background

The CSS property to change the background color of an element to Hex AE605E is called "background". The background property can be set on classes, ids or directly on the HTML element.

```
.background, #background, body{  
background:#AE605E }
```

If only the background color should be changed can be used:

```
.background{ background-color:#AE605E }
```

This example shows the color as background, it is applied via the CSS property "background".

To optimize and compress your CSS code, you can use our [online CSS compressor and optimizer](#) based on csstidy. If you want to create a linear or radial gradient as background or border, check our [CSS Gradient Generator](#).

Hey! You found this booklet
interesting? Support Converting
Colors with the new Membership
Option!

The pro membership hides all ads, plus gives you
double the colors in the color bucket, and more
awesome pro features!

[Learn more, Memberships starting at \\$2.50/m!](#)

**Follow me
on Twitter!**

@ConvertingColor