

Converting Colors

Hex(AE6665)

Have a look what the booklet for
Hex(AE6665) contains.

Hex(AE6665)	3
<i>Conversions</i>	4
<i>Details</i>	6
<i>Harmonies</i>	11
<i>Previews</i>	23
<i>Color Blindness Simulation</i>	26
<i>CSS Examples</i>	29

Color

Hex(AE6665)

Conversions

Conversions Part 1

Format	Color
Hex	AE6665
RGB	174, 102, 101
RGB Percent	68%, 40%, 40%
CMY	0.3176, 0.6000, 0.6039
CMYK	0.00, 0.41, 0.42, 0.32
HSL	1°, 31%, 54%
HSV	1°, 42%, 68%
XYZ	24.5559, 19.4410, 14.7702
YIQ	123.4140, 43.2330, 14.9530

Conversions

Conversions Part 2

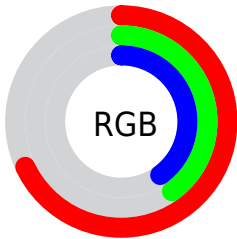
Format	Color
R _Y B	174, 102, 101
Decimal	11429477
CIE Lab	51.20, 28.80, 13.10
CIE LCh	51, 31.637, 24.455
Yxy	19.4410, 0.4179, 0.3308
Android (android.graphics.Color)	4289619557 (0xFFAE6665)
YUV	123.4140, -11.0501, 44.3639
Hunter-Lab	44.0919, 22.2501, 11.0031

Details

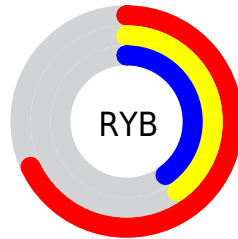
The Hex color **AE6665** is a dark color, and the websafe version is hex **996666**. A complement of this color would be **65ADAE**, and the grayscale version is **7B7B7B**.

A 20% lighter version of the original color is **E89A98**, and **773536** is the 20% darker color. If you saturate the color by 10%, you get **AE5554**, and if you desaturate by 10%, it is **AE7776**.

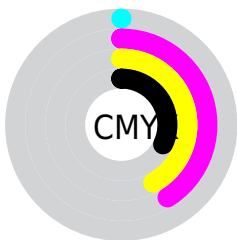
Distribution



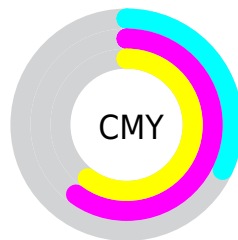
- Red (68%)
- Green (40%)
- Blue (40%)



- Red (68%)
- Yellow (40%)
- Blue (40%)



- Cyan (0%)
- Magenta (41%)
- Yellow (42%)
- Black (32%)



- Cyan (32%)
- Magenta (60%)
- Yellow (60%)

Brightness & Saturation Gradients

These gradients show how the Hex color AE6665 changes by changing the brightness by 10 percent. The first figure shows a shift by +10% for each color and the second figure -10%.

Similar to the brightness gradients but the following saturation gradients show a change of the Hex color AE6665 by changing the saturation by 10% instead.

 AE6665

 AE6665

FFFFFF

 924D4D

 E89A98

 773536

 FF5B3

 5C1E21

 FFD1CE

 42050B

 FFEEDA

 2C0001

 000000

 AE6665

 AE6665

 AE5554

 AE7776

 AE4442

 AE8888

 AE3331

 AE9999

 AE211F

 AEABAB

 AE100E

 AEBCBC

 AE0200

 AECD CD

 AEDEDF

 AEEFF0

 AEFFFF

Harmonies

Analogous

The Analogous color harmony consists of three colors that are next to each other on the color wheel.



AA6580



AE6665



A46D4F

Triad

The Triadic color harmony groups three colors that are evenly spaced from another and form a triangle on the color wheel.



AE6665



55855A



487EAF

Complementary

The Complementary color scheme is a pair of colors which are on the opposite of each other on the color wheel.



AE6665



65ADAE

Split Complementary

Split-complementary colors differ from the complementary color scheme. The scheme consists of three colors, the original color and two neighbors of the complement color.



0185A5



AE6665



2E8874

Square

The Square scheme is like the rectangle color scheme, but the four colors are evenly spaced on the color wheel.



AE6665



757F48



00888F



7575AB

Rectangle

The Rectangle color scheme consists of four colors that form a rectangle on the color wheel.



AE6665



987346



00888F



3581AE

Sweetspot

The Sweet Spot groups the original color and five complimentary colors.



AE6665



E3C6C5



AE65AE



736160



F2F2F2



737373

Same Dimension

The Same Dimension uses a secret algorithm to generate beautiful new colors.



AE6665



E37371



AE8A65



574E4E



960200



170000

Inverse Universe

The Inverse Universe completely reimagines the original color for something new.



65ADAE



71E1E3



658AAE



4E5757



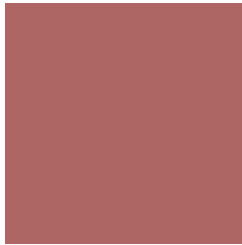
009496



001717

Previews

White Background



This preview shows how the Hex color AE6665 looks on a white background.

Color Contrast Check

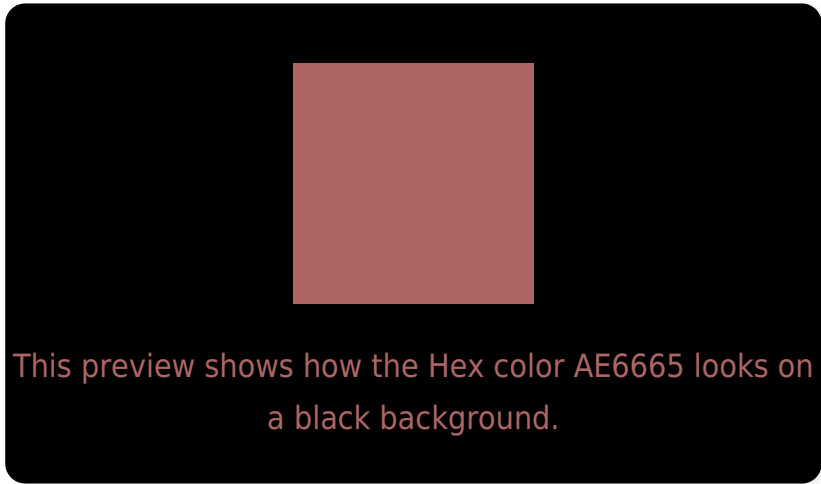
Large Text (above 18pt) WCAG AA ✓ Pass

Any Text WCAG AA × Fail

Large Text (above 18pt) WCAG AAA × Fail

Any Text WCAG AAA × Fail

Black Background



Color Contrast Check

Large Text (above 18pt) WCAG AA ✓ Pass

Any Text WCAG AA ✓ Pass

Large Text (above 18pt) WCAG AAA ✓ Pass

Any Text WCAG AAA × Fail

If you want to check with other color combinations, try the [Color Contrast Checker](#).

Hex AE6665 Background



This preview shows how black text looks on a background with the Hex color AE6665.

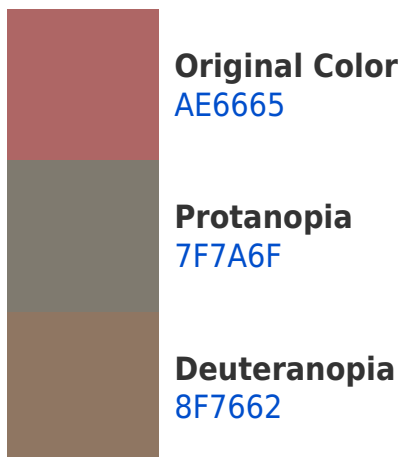



This preview shows how white text looks on a background with the Hex color AE6665.

Color Blindness Simulation

Color vision deficiency is a very complex topic, and I could not describe the different causes any better than Wikipedia does, so if you want to learn more, you should check out their [article about color blindness](#).

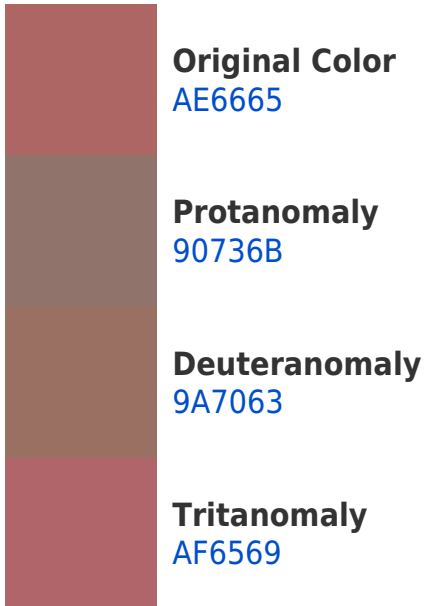
Dichromacy





Tritanopia
AF656C

Trichromacy



Monochromacy



CSS Examples

Text

The CSS property to change the color of the text to Hex AE6665 is called "color". The color property can be set on classes, ids or directly on the HTML element.

This example shows how text in the color #AE6665 looks like.

```
.text, #text, p{  
    color:#AE6665  
}
```

If you want to add a text shadow in that color use the text-shadow property, you can generate a text shadow directly with our [CSS Text Shadow Generator](#).

Here you see how black text with a 4 pixel #AE6665 colored shadow looks like.

```
.shadow{ text-shadow: 4px 4px 2px #AE6665  
}
```

Border

The CSS property to change the border of an element to Hex AE6665 is called "border". The border property can be set on classes, ids or directly on the HTML element.

This example shows the color as border, it can be applied via the CSS property "border" or "border-color".

```
.border, #border, table{ border:4px solid  
#AE6665 }
```

If only the border color should be changed use the property `border-color`.

```
.border{ border-color:#AE6665 }
```

If you want to add a box shadow in that color use:

Here you see how a box with a 4 pixel #AE6665 colored shadow looks like.

```
.boxshadow{ -moz-box-shadow:4px 4px 4px  
4px #AE6665; -webkit-box-shadow:4px 4px  
4px 4px #AE6665; box-shadow:4px 4px 4px  
4px #AE6665 }
```

Background

The CSS property to change the background color of an element to Hex AE6665 is called "background". The background property can be set on classes, ids or directly on the HTML element.

```
.background, #background, body{  
background:#AE6665 }
```

If only the background color should be changed can be used:

```
.background{ background-color:#AE6665 }
```

This example shows the color as background, it is applied via the CSS property "background".

To optimize and compress your CSS code, you can use our [online CSS compressor and optimizer](#) based on csstidy. If you want to create a linear or radial gradient as background or border, check our [CSS Gradient Generator](#).

Hey! You found this booklet interesting? Support Converting Colors with the new Membership Option!

The pro membership hides all ads, plus gives you double the colors in the color bucket, and more awesome pro features!

[Learn more, Memberships starting at \\$2.50/m!](#)

**Follow me
on Twitter!**

@ConvertingColor