

Converting Colors

Hex(AE676E)

Have a look what the booklet for
Hex(AE676E) contains.

Hex(AE676E)	3
<i>Conversions</i>	4
<i>Details</i>	6
<i>Harmonies</i>	11
<i>Previews</i>	23
<i>Color Blindness Simulation</i>	26
<i>CSS Examples</i>	29

Color

Hex(AE676E)

Conversions

Conversions Part 1

Format	Color
Hex	AE676E
RGB	174, 103, 110
RGB Percent	68%, 40%, 43%
CMY	0.3176, 0.5961, 0.5686
CMYK	0.00, 0.41, 0.37, 0.32
HSL	354°, 30%, 54%
HSV	354°, 41%, 68%
XYZ	25.1203, 19.8250, 17.2545
YIQ	125.0270, 40.0690, 17.2290

Conversions

Conversions Part 2

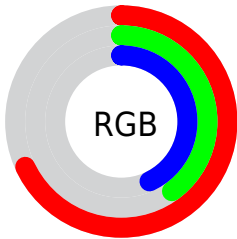
Format	Color
RYB	174, 103, 110
Decimal	11429742
CIELab	51.64, 29.33, 8.39
CIELCh	52, 30.502, 15.965
Yxy	19.8250, 0.4039, 0.3187
Android (android.graphics.Color)	4289619822 (0xFFAE676E)
YUV	125.0270, -7.4083, 42.9493
Hunter-Lab	44.5252, 22.7871, 8.1915

Details

The Hex color **AE676E** is a dark color, and the websafe version is hex **996666**. A complement of this color would be **67AEA7**, and the grayscale version is **7D7D7D**.

A 20% lighter version of the original color is **E79BA1**, and **77363F** is the 20% darker color. If you saturate the color by 10%, you get **AE565E**, and if you desaturate by 10%, it is **AE787E**.

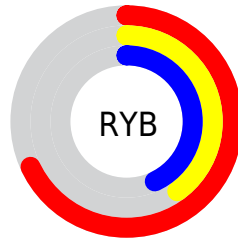
Distribution



Red (68%)

Green (40%)

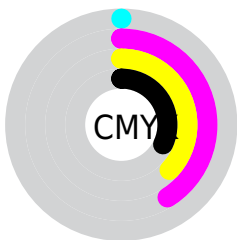
Blue (43%)



Red (68%)

Yellow (40%)

Blue (43%)

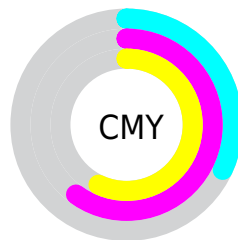


Cyan (0%)

Magenta (41%)

Yellow (37%)

Black (32%)



Cyan (32%)

Magenta (60%)

Yellow (57%)

Brightness & Saturation Gradients

These gradients show how the Hex color AE676E changes by changing the brightness by 10 percent. The first figure shows a shift by +10% for each color and the second figure -10%.

Similar to the brightness gradients but the following saturation gradients show a change of the Hex color AE676E by changing the saturation by 10% instead.

 AE676E

 AE676E

FFFFFF

 924E56

 E79BA1

 77363F

 FFB6BC

 5D1E29

 FFD2D8

 430515

 FFEFF5

 2D0000

 000000

 AE676E

 AE676E

 AE565E

 AE787E

 AE444F

 AE8A8D

 AE333F

 AE9B9D

 AE212F

 AEADAD

 AE1020

 AEBEBC

 AE0011

 AECFCC

 AEE1DC

 AEF2EB

 AEFFFB

Harmonies

Analogous

The Analogous color harmony consists of three colors that are next to each other on the color wheel.



A66888



AE676E



A86C57

Triad

The Triadic color harmony groups three colors that are evenly spaced from another and form a triangle on the color wheel.



AE676E



618456



3E81AD

Complementary

The Complementary color scheme is a pair of colors which are on the opposite of each other on the color wheel.



AE676E



67AEA7

Split Complementary

Split-complementary colors differ from the complementary color scheme. The scheme consists of three colors, the original color and two neighbors of the complement color.



0587A0



AE676E



3F886E

Square

The Square scheme is like the rectangle color scheme, but the four colors are evenly spaced on the color wheel.



AE676E



7E7E48



148989



6C79AD

Rectangle

The Rectangle color scheme consists of four colors that form a rectangle on the color wheel.



AE676E



9E724C



148989



2D83AA

Sweetspot

The Sweet Spot groups the original color and five complimentary colors.



AE676E



E3C8CA



A767AE



736364



F2F2F2



737373

Same Dimension

The Same Dimension uses a secret algorithm to generate beautiful new colors.



AE676E



E3747F



AE8367



574E4F



96000F



170002

Inverse Universe

The Inverse Universe completely reimagines the original color for something new.



AE676E



E3747F



6792AE



574E4F



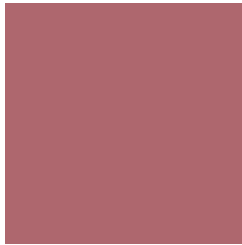
96000F



170002

Previews

White Background



This preview shows how the Hex color AE676E looks on a white background.

Color Contrast Check

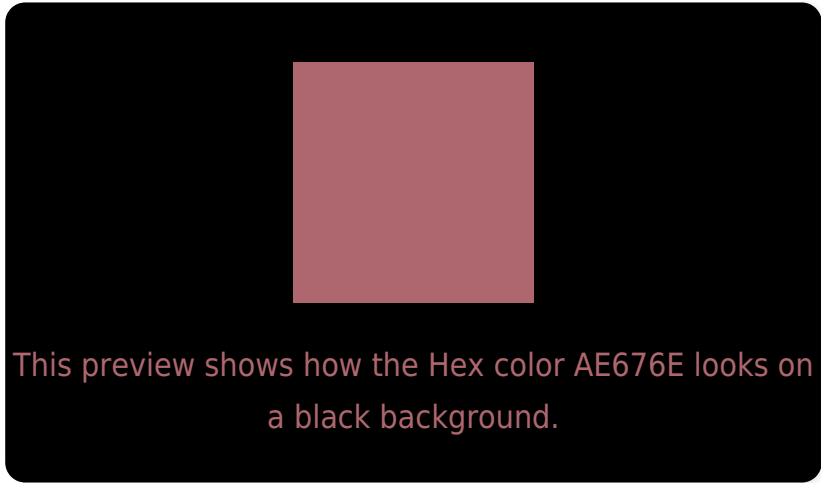
Large Text (above 18pt) WCAG AA ✓ Pass

Any Text WCAG AA × Fail

Large Text (above 18pt) WCAG AAA × Fail

Any Text WCAG AAA × Fail

Black Background



Color Contrast Check

Large Text (above 18pt) WCAG AA ✓ Pass

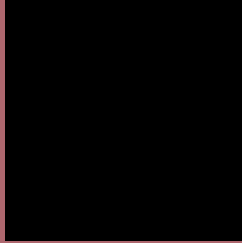
Any Text WCAG AA ✓ Pass

Large Text (above 18pt) WCAG AAA ✓ Pass

Any Text WCAG AAA × Fail

If you want to check with other color combinations, try the [Color Contrast Checker](#).

Hex AE676E Background



This preview shows how black text looks on a background with the Hex color AE676E.



This preview shows how white text looks on a background with the Hex color AE676E.

Color Blindness Simulation

Color vision deficiency is a very complex topic, and I could not describe the different causes any better than Wikipedia does, so if you want to learn more, you should check out their [article about color blindness](#).


Dichromacy



Original Color
AE676E

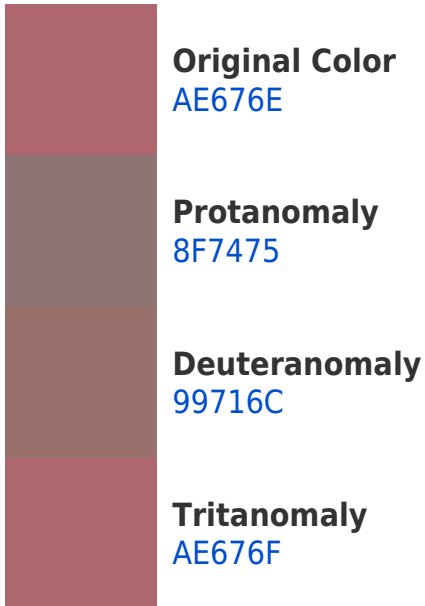
Protanopia
7E7B79

Deuteranopia
8D776B



Tritanopia
AE676F

Trichromacy



Monochromacy



CSS Examples

Text

The CSS property to change the color of the text to Hex AE676E is called "color". The color property can be set on classes, ids or directly on the HTML element.

This example shows how text in the color #AE676E looks like.

```
.text, #text, p{  
    color:#AE676E  
}
```

If you want to add a text shadow in that color use the text-shadow property, you can generate a text shadow directly with our [CSS Text Shadow Generator](#).

Here you see how black text with a 4 pixel #AE676E colored shadow looks like.

```
.shadow{ text-shadow: 4px 4px 2px #AE676E
}
```

Border

The CSS property to change the border of an element to Hex AE676E is called "border". The border property can be set on classes, ids or directly on the HTML element.

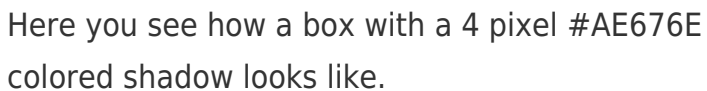
This example shows the color as border, it can be applied via the CSS property "border" or "border-color".

```
.border, #border, table{ border:4px solid
#AE676E }
```

If only the border color should be changed use the property border-color.

```
.border{ border-color:#AE676E }
```

If you want to add a box shadow in that color use:



Here you see how a box with a 4 pixel #AE676E colored shadow looks like.

```
.boxshadow{ -moz-box-shadow:4px 4px 4px  
4px #AE676E; -webkit-box-shadow:4px 4px  
4px 4px #AE676E; box-shadow:4px 4px 4px  
4px #AE676E }
```

Background

The CSS property to change the background color of an element to Hex AE676E is called "background". The background property can be set on classes, ids or directly on the HTML element.

```
.background, #background, body{  
background:#AE676E }
```

If only the background color should be changed can be used:

```
.background{ background-color:#AE676E }
```

This example shows the color as background, it is applied via the CSS property "background".

To optimize and compress your CSS code, you can use our [online CSS compressor and optimizer](#) based on csstidy. If you want to create a linear or radial gradient as background or border, check our [CSS Gradient Generator](#).

Hey! You found this booklet interesting? Support Converting Colors with the new Membership Option!

The pro membership hides all ads, plus gives you double the colors in the color bucket, and more awesome pro features!

[Learn more, Memberships starting at \\$2.50/m!](#)

**Follow me
on Twitter!**

@ConvertingColor