

Converting Colors

Hex(AE7851)

Have a look what the booklet for
Hex(AE7851) contains.

Hex(AE7851)	3
<i>Conversions</i>	4
<i>Details</i>	6
<i>Harmonies</i>	11
<i>Previews</i>	23
<i>Color Blindness Simulation</i>	26
<i>CSS Examples</i>	29

Color

Hex(AE7851)

Conversions

Conversions Part 1

Format	Color
Hex	AE7851
RGB	174, 120, 81
RGB Percent	68%, 47%, 32%
CMY	0.3176, 0.5294, 0.6824
CMYK	0.00, 0.31, 0.53, 0.32
HSL	25°, 36%, 50%
HSV	25°, 53%, 68%
XYZ	25.6572, 23.0257, 10.8767
YIQ	131.7000, 44.7030, -0.6810

Conversions

Conversions Part 2

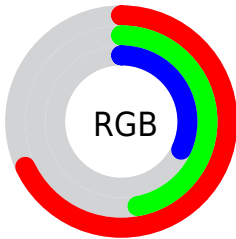
Format	Color
RYB	174, 148, 81
Decimal	11434065
CIELab	55.10, 16.68, 29.79
CIELCh	55, 34.139, 60.748
Yxy	23.0257, 0.4308, 0.3866
Android (android.graphics.Color)	4289624145 (0xFFAE7851)
YUV	131.7000, -24.9951, 37.0971
Hunter-Lab	47.9851, 11.4686, 20.1504

Details

The Hex color **AE7851** is a dark color, and the websafe version is hex **996633**. A complement of this color would be **5187AE**, and the grayscale version is **848484**.

A 20% lighter version of the original color is **E8AC83**, and **774723** is the 20% darker color. If you saturate the color by 10%, you get **AE6E40**, and if you desaturate by 10%, it is **AE8262**.

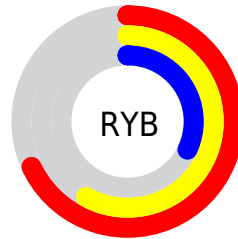
Distribution



Red (68%)

Green (47%)

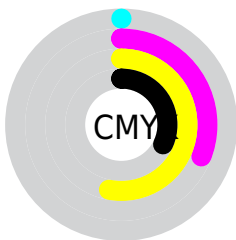
Blue (32%)



Red (68%)

Yellow (58%)

Blue (32%)

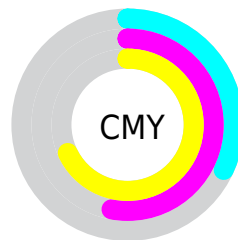


Cyan (0%)

Magenta (31%)

Yellow (53%)

Black (32%)



Cyan (32%)

Magenta (53%)

Yellow (68%)

Brightness & Saturation Gradients

These gradients show how the Hex color AE7851 changes by changing the brightness by 10 percent. The first figure shows a shift by +10% for each color and the second figure -10%.

Similar to the brightness gradients but the following saturation gradients show a change of the Hex color AE7851 by changing the saturation by 10% instead.

 AE7851

 AE7851

FFFFFF

 925F39

 E8AC83

 774723

 FFC89D

 5C310D

 FFE4B8

 421B00

 FFFFD4

 290500

 FFFFF1

 000000

 AE7851

 AE7851

 AE6E40

 AE8262

 AE642E

 AE8C74

 AE5A1D

 AE9685

 AE500B

 AEA097

 AE4900

 AEABA8

 AEB5B9

 AEBFCB

 AEC9DC

 AED3EE

Harmonies

Analogous

The Analogous color harmony consists of three colors that are next to each other on the color wheel.



BC6F67



AE7851



968248

Triad

The Triadic color harmony groups three colors that are evenly spaced from another and form a triangle on the color wheel.



AE7851



249384



887CB7

Complementary

The Complementary color scheme is a pair of colors which are on the opposite of each other on the color wheel.



AE7851



5187AE

Split Complementary

Split-complementary colors differ from the complementary color scheme. The scheme consists of three colors, the original color and two neighbors of the complement color.



5887BF



AE7851



0093A1

Square

The Square scheme is like the rectangle color scheme, but the four colors are evenly spaced on the color wheel.



AE7851



539166



118FB7



AA72A1

Rectangle

The Rectangle color scheme consists of four colors that form a rectangle on the color wheel.



AE7851



82894B



118FB7



7980BB

Sweetspot

The Sweet Spot groups the original color and five complimentary colors.



AE7851



E3CEBF



AE5187



73665D



F2F2F2



737373

Same Dimension

The Same Dimension uses a secret algorithm to generate beautiful new colors.



AE7851



E38F52



AEA651



57524E



963F00



170A00

Inverse Universe

The Inverse Universe completely reimagines the original color for something new.



5187AE



52A6E3



5159AE



4E5357



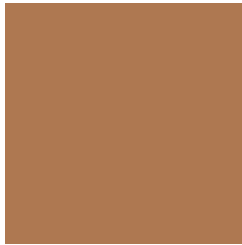
005796



000D17

Previews

White Background



This preview shows how the Hex color AE7851 looks on a white background.

Color Contrast Check

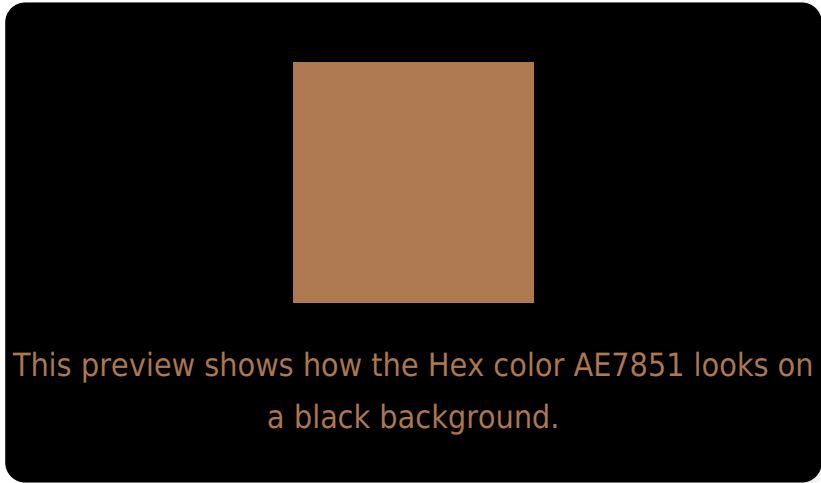
Large Text (above 18pt) WCAG AA ✓ Pass

Any Text WCAG AA ✗ Fail

Large Text (above 18pt) WCAG AAA ✗ Fail

Any Text WCAG AAA ✗ Fail

Black Background



Color Contrast Check

Large Text (above 18pt) WCAG AA ✓ Pass

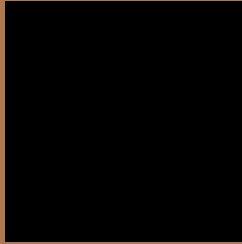
Any Text WCAG AA ✓ Pass

Large Text (above 18pt) WCAG AAA ✓ Pass

Any Text WCAG AAA × Fail

If you want to check with other color combinations, try the [Color Contrast Checker](#).

Hex AE7851 Background



This preview shows how black text looks on a background with the Hex color AE7851.



This preview shows how white text looks on a background with the Hex color AE7851.

Color Blindness Simulation

Color vision deficiency is a very complex topic, and I could not describe the different causes any better than Wikipedia does, so if you want to learn more, you should check out their [article about color blindness](#).

Dichromacy



Original Color
AE7851

Protanopia
908456

Deuteranopia
A07E50

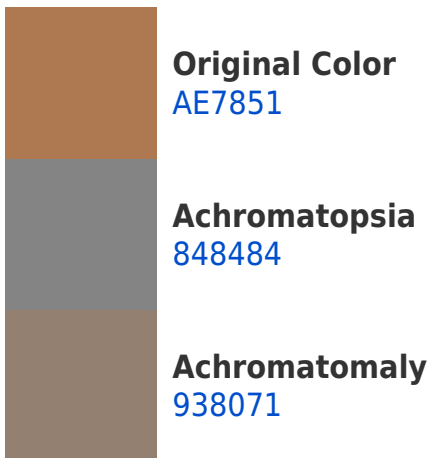


Tritanopia
B1737B

Trichromacy



Monochromacy



CSS Examples

Text

The CSS property to change the color of the text to Hex AE7851 is called "color". The color property can be set on classes, ids or directly on the HTML element.

This example shows how text in the color #AE7851 looks like.

```
.text, #text, p{  
    color:#AE7851  
}
```

If you want to add a text shadow in that color use the text-shadow property, you can generate a text shadow directly with our [CSS Text Shadow Generator](#).

Here you see how black text with a 4 pixel #AE7851 colored shadow looks like.

```
.shadow{ text-shadow: 4px 4px 2px #AE7851  
}
```

Border

The CSS property to change the border of an element to Hex AE7851 is called "border". The border property can be set on classes, ids or directly on the HTML element.

This example shows the color as border, it can be applied via the CSS property "border" or "border-color".

```
.border, #border, table{ border:4px solid  
#AE7851 }
```

If only the border color should be changed use the property `border-color`.

```
.border{ border-color:#AE7851 }
```

If you want to add a box shadow in that color use:

Here you see how a box with a 4 pixel #AE7851 colored shadow looks like.

```
.boxshadow{ -moz-box-shadow:4px 4px 4px  
4px #AE7851; -webkit-box-shadow:4px 4px  
4px 4px #AE7851; box-shadow:4px 4px 4px  
4px #AE7851 }
```

Background

The CSS property to change the background color of an element to Hex AE7851 is called "background". The background property can be set on classes, ids or directly on the HTML element.

```
.background, #background, body{  
background:#AE7851 }
```

If only the background color should be changed can be used:

```
.background{ background-color:#AE7851 }
```

This example shows the color as background, it is applied via the CSS property "background".

To optimize and compress your CSS code, you can use our [online CSS compressor and optimizer](#) based on csstidy. If you want to create a linear or radial gradient as background or border, check our [CSS Gradient Generator](#).

Hey! You found this booklet interesting? Support Converting Colors with the new Membership Option!

The pro membership hides all ads, plus gives you double the colors in the color bucket, and more awesome pro features!

[Learn more, Memberships starting at \\$2.50/m!](#)

**Follow me
on Twitter!**

@ConvertingColor