

Converting Colors

Hex(AE7D45)

Have a look what the booklet for
Hex(AE7D45) contains.

Hex(AE7D45)	3
<i>Conversions</i>	4
<i>Details</i>	6
<i>Harmonies</i>	11
<i>Previews</i>	23
<i>Color Blindness Simulation</i>	26
<i>CSS Examples</i>	29

Color

Hex(AE7D45)

Conversions

Conversions Part 1

Format	Color
Hex	AE7D45
RGB	174, 125, 69
RGB Percent	68%, 49%, 27%
CMY	0.3176, 0.5098, 0.7294
CMYK	0.00, 0.28, 0.60, 0.32
HSL	32°, 43%, 48%
HSV	32°, 60%, 68%
XYZ	25.8634, 24.0956, 8.9180
YIQ	133.2670, 47.1800, -7.0280

Conversions

Conversions Part 2

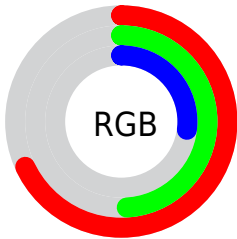
Format	Color
R_{YB}	161, 174, 69
Decimal	11435333
CIE _{Lab}	56.18, 12.87, 37.60
CIE _{LCh}	56, 39.740, 71.104
Yxy	24.0956, 0.4393, 0.4093
Android (android.graphics.Color)	4289625413 (0xFFAE7D45)
YUV	133.2670, -31.6836, 35.7228
Hunter-Lab	49.0872, 8.1464, 23.5895

Details

The Hex color **AE7D45** is a dark color, and the websafe version is hex **996633**. A complement of this color would be **4576AE**, and the grayscale version is **868686**.

A 20% lighter version of the original color is **E8B277**, and **764C16** is the 20% darker color. If you saturate the color by 10%, you get **AE7534**, and if you desaturate by 10%, it is **AE8556**.

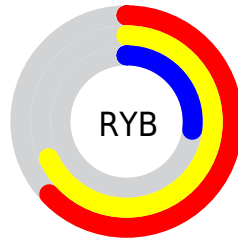
Distribution



Red (68%)

Green (49%)

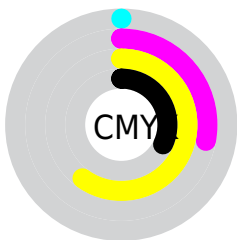
Blue (27%)



Red (63%)

Yellow (68%)

Blue (27%)

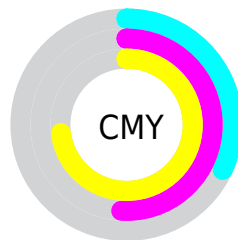


Cyan (0%)

Magenta (28%)

Yellow (60%)

Black (32%)



Cyan (32%)

Magenta (51%)

Yellow (73%)

Brightness & Saturation Gradients

These gradients show how the Hex color AE7D45 changes by changing the brightness by 10 percent. The first figure shows a shift by +10% for each color and the second figure -10%.

Similar to the brightness gradients but the following saturation gradients show a change of the Hex color AE7D45 by changing the saturation by 10% instead.

 AE7D45

 AE7D45

FFFFFF

 92642D

 E8B277

 764C16

 FFCD91

 5B3500

 FFE9AC

 412000

 FFFFC7

 280B00

 FFFFE4

 000000

 AE7D45

 AE7D45

 AE7534

 AE8556

 AE6D22

 AE8D68

 AE6511

 AE9579

 AE5D00

 AE9D8B

 AEA69C

 AEAEAD

 AEB6BF

 AEBED0

 AEC6E2

Harmonies

Analogous

The Analogous color harmony consists of three colors that are next to each other on the color wheel.



C3715B



AE7D45



8F8941

Triad

The Triadic color harmony groups three colors that are evenly spaced from another and form a triangle on the color wheel.



AE7D45



009993



9A79BB

Complementary

The Complementary color scheme is a pair of colors which are on the opposite of each other on the color wheel.



AE7D45



4576AE

Split Complementary

Split-complementary colors differ from the complementary color scheme. The scheme consists of three colors, the original color and two neighbors of the complement color.



6686CA



AE7D45



0097B3

Square

The Square scheme is like the rectangle color scheme, but the four colors are evenly spaced on the color wheel.



AE7D45



38976F



0090C7



BB6D9E

Rectangle

The Rectangle color scheme consists of four colors that form a rectangle on the color wheel.



AE7D45



778F4A



0090C7



8B7DC2

Sweetspot

The Sweet Spot groups the original color and five complimentary colors.



AE7D45



E3D0BA



AE4576



73675A



F2F2F2



737373

Same Dimension

The Same Dimension uses a secret algorithm to generate beautiful new colors.



AE7D45



E39740



ABAE45



57534E



965000



170C00

Inverse Universe

The Inverse Universe completely reimagines the original color for something new.



4576AE



408CE3



4945AE



4E5257



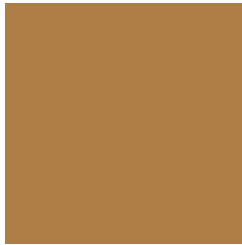
004696



000B17

Previews

White Background



This preview shows how the Hex color AE7D45 looks on a white background.

Color Contrast Check

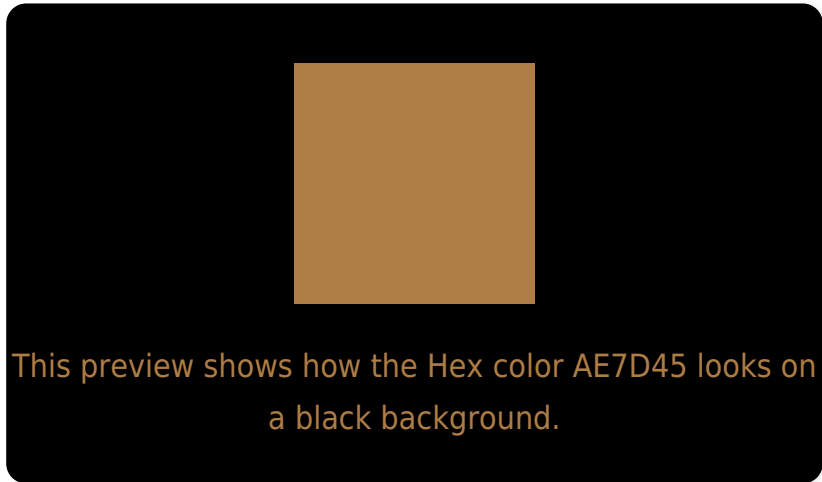
Large Text (above 18pt) WCAG AA ✓ Pass

Any Text WCAG AA × Fail

Large Text (above 18pt) WCAG AAA × Fail

Any Text WCAG AAA × Fail

Black Background



Color Contrast Check

Large Text (above 18pt) WCAG AA ✓ Pass

Any Text WCAG AA ✓ Pass

Large Text (above 18pt) WCAG AAA ✓ Pass

Any Text WCAG AAA × Fail

If you want to check with other color combinations, try the [Color Contrast Checker](#).

Hex AE7D45 Background



This preview shows how black text looks on a background with the Hex color AE7D45.



This preview shows how white text looks on a background with the Hex color AE7D45.

Color Blindness Simulation

Color vision deficiency is a very complex topic, and I could not describe the different causes any better than Wikipedia does, so if you want to learn more, you should check out their [article about color blindness](#).


Dichromacy



Original Color
AE7D45

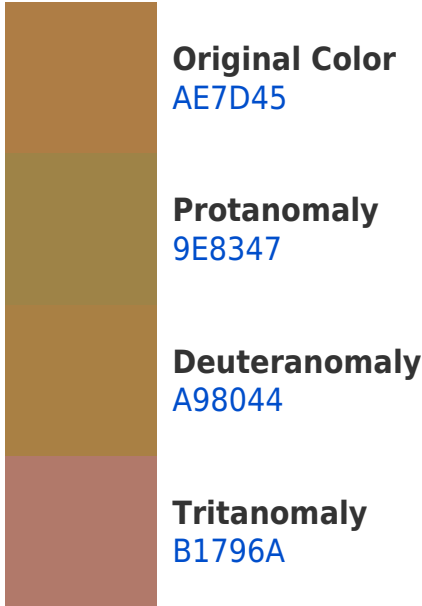
Protanopia
958748

Deuteranopia
A68144

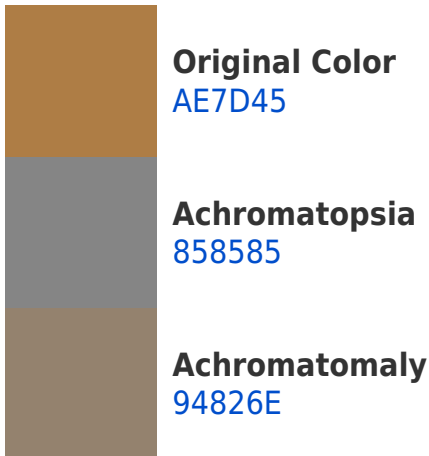


Tritanopia
B2767F

Trichromacy



Monochromacy



CSS Examples

Text

The CSS property to change the color of the text to Hex AE7D45 is called "color". The color property can be set on classes, ids or directly on the HTML element.

This example shows how text in the color #AE7D45 looks like.

```
.text, #text, p{  
    color:#AE7D45  
}
```

If you want to add a text shadow in that color use the text-shadow property, you can generate a text shadow directly with our [CSS Text Shadow Generator](#).

Here you see how black text with a 4 pixel #AE7D45 colored shadow looks like.

```
.shadow{ text-shadow: 4px 4px 2px #AE7D45  
}
```

Border

The CSS property to change the border of an element to Hex AE7D45 is called "border". The border property can be set on classes, ids or directly on the HTML element.

This example shows the color as border, it can be applied via the CSS property "border" or "border-color".

```
.border, #border, table{ border:4px solid  
#AE7D45 }
```

If only the border color should be changed use the property `border-color`.

```
.border{ border-color:#AE7D45 }
```

If you want to add a box shadow in that color use:

Here you see how a box with a 4 pixel #AE7D45 colored shadow looks like.

```
.boxshadow{ -moz-box-shadow:4px 4px 4px  
4px #AE7D45; -webkit-box-shadow:4px 4px  
4px 4px #AE7D45; box-shadow:4px 4px 4px  
4px #AE7D45 }
```

Background

The CSS property to change the background color of an element to Hex AE7D45 is called "background". The background property can be set on classes, ids or directly on the HTML element.

```
.background, #background, body{  
background:#AE7D45 }
```

If only the background color should be changed can be used:

```
.background{ background-color:#AE7D45 }
```

This example shows the color as background, it is applied via the CSS property "background".

To optimize and compress your CSS code, you can use our [online CSS compressor and optimizer](#) based on csstidy. If you want to create a linear or radial gradient as background or border, check our [CSS Gradient Generator](#).

Hey! You found this booklet interesting? Support Converting Colors with the new Membership Option!

The pro membership hides all ads, plus gives you double the colors in the color bucket, and more awesome pro features!

[Learn more, Memberships starting at \\$2.50/m!](#)

**Follow me
on Twitter!**

@ConvertingColor