

Converting Colors

Hex(AE7E5A)

Have a look what the booklet for
Hex(AE7E5A) contains.

Hex(AE7E5A)	3
<i>Conversions</i>	4
<i>Details</i>	6
<i>Harmonies</i>	11
<i>Previews</i>	23
<i>Color Blindness Simulation</i>	26
<i>CSS Examples</i>	29

Color

Hex(AE7E5A)

Conversions

Conversions Part 1

Format	Color
Hex	AE7E5A
RGB	174, 126, 90
RGB Percent	68%, 49%, 35%
CMY	0.3176, 0.5059, 0.6471
CMYK	0.00, 0.28, 0.48, 0.32
HSL	26°, 34%, 52%
HSV	26°, 48%, 68%
XYZ	26.7619, 24.6586, 13.0219
YIQ	136.2480, 40.1640, -1.0200

Conversions

Conversions Part 2

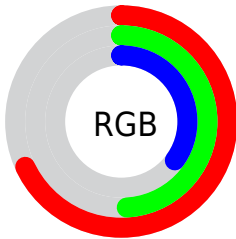
Format	Color
RYB	174, 153, 90
Decimal	11435610
CIELab	56.74, 14.18, 26.88
CIELCh	57, 30.387, 62.194
Yxy	24.6586, 0.4153, 0.3826
Android (android.graphics.Color)	4289625690 (0xFFAE7E5A)
YUV	136.2480, -22.8003, 33.1085
Hunter-Lab	49.6574, 9.2986, 19.2122

Details

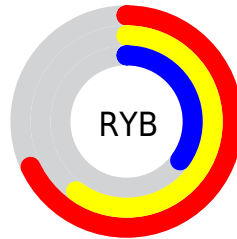
The Hex color **AE7E5A** is a dark color, and the websafe version is hex **CC9966**. A complement of this color would be **5A8AAE**, and the grayscale version is **888888**.

A 20% lighter version of the original color is **E7B38D**, and **774D2B** is the 20% darker color. If you saturate the color by 10%, you get **AE7449**, and if you desaturate by 10%, it is **AE886B**.

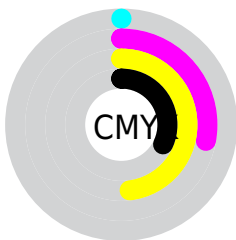
Distribution



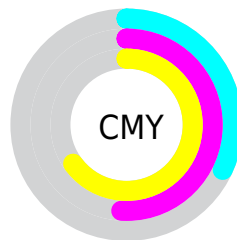
- Red (68%)
- Green (49%)
- Blue (35%)



- Red (68%)
- Yellow (60%)
- Blue (35%)



- Cyan (0%)
- Magenta (28%)
- Yellow (48%)
- Black (32%)



- Cyan (32%)
- Magenta (51%)
- Yellow (65%)

Brightness & Saturation Gradients

These gradients show how the Hex color AE7E5A changes by changing the brightness by 10 percent. The first figure shows a shift by +10% for each color and the second figure -10%.

Similar to the brightness gradients but the following saturation gradients show a change of the Hex color AE7E5A by changing the saturation by 10% instead.

 AE7E5A

 AE7E5A

FFFFFF

 926542

 E7B38D

 774D2B

 FFCEA7

 5D3616

 FFEBC2

 442000

 FFFFDE

 2A0C00

 FFFFFB

 000000

 AE7E5A

 AE7E5A

 AE7449

 AE886B

 AE6A37

 AE927D

 AE6026

 AE9C8E

 AE5614

 AEA6A0

 AE4C03

 AEB0B1

 AE4B00

 AEBAC2

 AEC4D4

 AECEE5

 AED7F7

Harmonies

Analogous

The Analogous color harmony consists of three colors that are next to each other on the color wheel.



BB766D



AE7E5A



988753

Triad

The Triadic color harmony groups three colors that are evenly spaced from another and form a triangle on the color wheel.



AE7E5A



3A9689



8E81B5

Complementary

The Complementary color scheme is a pair of colors which are on the opposite of each other on the color wheel.



AE7E5A



5A8AAE

Split Complementary

Split-complementary colors differ from the complementary color scheme. The scheme consists of three colors, the original color and two neighbors of the complement color.



668ABD



AE7E5A



2296A3

Square

The Square scheme is like the rectangle color scheme, but the four colors are evenly spaced on the color wheel.



AE7E5A



5C946F



3A91B6



AB78A1

Rectangle

The Rectangle color scheme consists of four colors that form a rectangle on the color wheel.



AE7E5A



868D56



3A91B6



8184B9

Sweetspot

The Sweet Spot groups the original color and five complimentary colors.



AE7E5A



E3D1C3



AE5A8B



73685F



F2F2F2



737373

Same Dimension

The Same Dimension uses a secret algorithm to generate beautiful new colors.



AE7E5A



E3985F



AEA75A



57524E



964000



170A00

Inverse Universe

The Inverse Universe completely reimagines the original color for something new.



5A8AAE



5FABE3



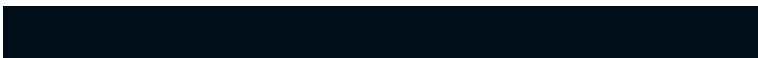
5A61AE



4E5357



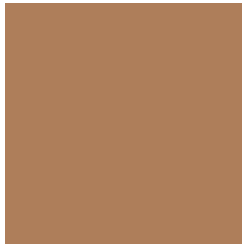
005696



000D17

Previews

White Background



This preview shows how the Hex color AE7E5A looks on a white background.

Color Contrast Check

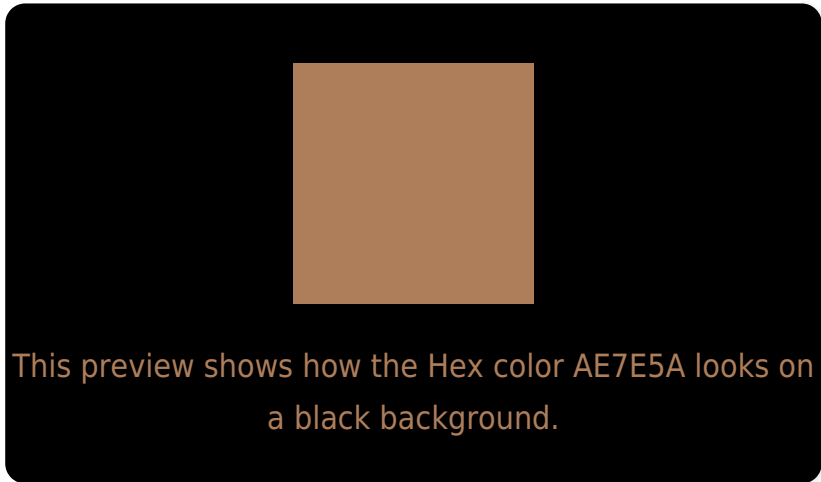
Large Text (above 18pt) WCAG AA ✓ Pass

Any Text WCAG AA × Fail

Large Text (above 18pt) WCAG AAA × Fail

Any Text WCAG AAA × Fail

Black Background



Color Contrast Check

Large Text (above 18pt) WCAG AA ✓ Pass

Any Text WCAG AA ✓ Pass

Large Text (above 18pt) WCAG AAA ✓ Pass

Any Text WCAG AAA × Fail

If you want to check with other color combinations, try the [Color Contrast Checker](#).

Hex AE7E5A Background



This preview shows how black text looks on a background with the Hex color AE7E5A.



This preview shows how white text looks on a background with the Hex color AE7E5A.

Color Blindness Simulation

Color vision deficiency is a very complex topic, and I could not describe the different causes any better than Wikipedia does, so if you want to learn more, you should check out their [article about color blindness](#).

Dichromacy



Original Color
AE7E5A

Protanopia
93885E

Deuteranopia
A48259

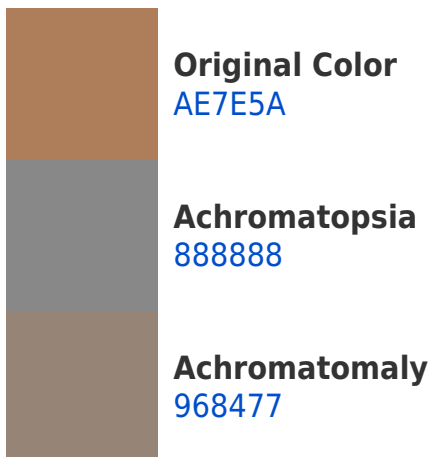


Tritanopia
B17982

Trichromacy



Monochromacy



CSS Examples

Text

The CSS property to change the color of the text to Hex AE7E5A is called "color". The color property can be set on classes, ids or directly on the HTML element.

This example shows how text in the color #AE7E5A looks like.

```
.text, #text, p{  
    color:#AE7E5A  
}
```

If you want to add a text shadow in that color use the text-shadow property, you can generate a text shadow directly with our [CSS Text Shadow Generator](#).

Here you see how black text with a 4 pixel #AE7E5A colored shadow looks like.

```
.shadow{ text-shadow: 4px 4px 2px #AE7E5A
}
```

Border

The CSS property to change the border of an element to Hex AE7E5A is called "border". The border property can be set on classes, ids or directly on the HTML element.

This example shows the color as border, it can be applied via the CSS property "border" or "border-color".

```
.border, #border, table{ border:4px solid
#AE7E5A }
```

If only the border color should be changed use the property `border-color`.

```
.border{ border-color:#AE7E5A }
```

If you want to add a box shadow in that color use:

Here you see how a box with a 4 pixel #AE7E5A colored shadow looks like.

```
.boxshadow{ -moz-box-shadow:4px 4px 4px  
4px #AE7E5A; -webkit-box-shadow:4px 4px  
4px 4px #AE7E5A; box-shadow:4px 4px 4px  
4px #AE7E5A }
```

Background

The CSS property to change the background color of an element to Hex AE7E5A is called "background". The background property can be set on classes, ids or directly on the HTML element.

```
.background, #background, body{  
background:#AE7E5A }
```

If only the background color should be changed can be used:

```
.background{ background-color:#AE7E5A }
```

This example shows the color as background, it is applied via the CSS property "background".

To optimize and compress your CSS code, you can use our [online CSS compressor and optimizer](#) based on csstidy. If you want to create a linear or radial gradient as background or border, check our [CSS Gradient Generator](#).

Hey! You found this booklet interesting? Support Converting Colors with the new Membership Option!

The pro membership hides all ads, plus gives you double the colors in the color bucket, and more awesome pro features!

[Learn more, Memberships starting at \\$2.50/m!](#)

**Follow me
on Twitter!**

@ConvertingColor