

# Converting Colors

Hex(AE8294)

Have a look what the booklet for  
Hex(AE8294) contains.

|  |    |
|--|----|
| <b>Hex(AE8294)</b> .....                       | 3  |
| <i><b>Conversions</b></i> .....                | 4  |
| <i><b>Details</b></i> .....                    | 6  |
| <i><b>Harmonies</b></i> .....                  | 11 |
| <i><b>Previews</b></i> .....                   | 23 |
| <i><b>Color Blindness Simulation</b></i> ..... | 26 |
| <i><b>CSS Examples</b></i> .....               | 29 |

# **Color**

**Hex(AE8294)**

# Conversions

## Conversions Part 1

| <b>Format</b> | <b>Color</b>               |
|---------------|----------------------------|
| Hex           | AE8294                     |
| RGB           | 174, 130, 148              |
| RGB Percent   | 68%, 51%, 58%              |
| CMY           | 0.3176, 0.4902, 0.4196     |
| CMYK          | 0.00, 0.25, 0.15, 0.32     |
| HSL           | 335°, 21%, 60%             |
| HSV           | 335°, 25%, 68%             |
| XYZ           | 30.7835, 27.1021, 31.6257  |
| YIQ           | 145.2080, 20.4460, 14.9260 |

# Conversions

## Conversions Part 2

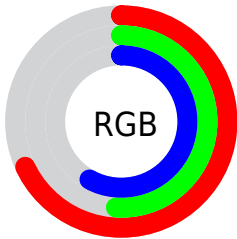
| <b>Format</b>                       | <b>Color</b>                                  |
|-------------------------------------|---|
| <a href="#">RYB</a>                 | <a href="#">174, 130, 148</a>                 |
| Decimal                             | <a href="#">11436692</a>                      |
| CIELab                              | <a href="#">59.07, 19.80, -3.02</a>           |
| CIELCh                              | <a href="#">59, 20.028, 351.320</a>           |
| Yxy                                 | <a href="#">27.1021, 0.3439,<br/>0.3028</a>   |
| Android<br>(android.graphics.Color) | <a href="#">4289626772<br/>(0xFFAE8294)</a>   |
| YUV                                 | <a href="#">145.2080, 1.3765,<br/>25.2506</a> |
| Hunter-Lab                          | <a href="#">52.0596, 14.4448,<br/>0.4236</a>  |

# Details

The Hex color **AE8294** is a light color, and the websafe version is hex **CC9999**. A complement of this color would be **82AE9C**, and the grayscale version is **919191**.

A 20% lighter version of the original color is **E6B7CA**, and **795061** is the 20% darker color. If you saturate the color by 10%, you get **AE718A**, and if you desaturate by 10%, it is **AE939E**.

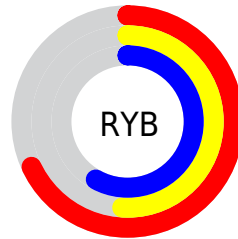
# Distribution



Red (68%)

Green (51%)

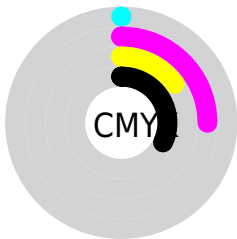
Blue (58%)



Red (68%)

Yellow (51%)

Blue (58%)

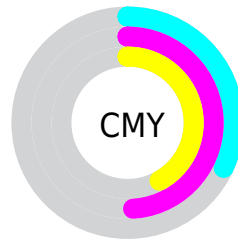


Cyan (0%)

Magenta (25%)

Yellow (15%)

Black (32%)



Cyan (32%)

Magenta (49%)

Yellow (42%)

# Brightness & Saturation Gradients

These gradients show how the Hex color AE8294 changes by changing the brightness by 10 percent. The first figure shows a shift by +10% for each color and the second figure -10%.

Similar to the brightness gradients but the following saturation gradients show a change of the Hex color AE8294 by changing the saturation by 10% instead.



 AE8294

 AE8294

FFFFFF

 93697A

 E6B7CA

 795061

 FFD3E6

 60394A

 FFEFFF

 472333

 300D1E

 1D0004

 000000

 AE8294

 AE8294

 AE718A

 AE939E

 AE5F7F

 AEA5A9

 AE4E75

 AEB6B3

 AE3C6B

 AEC8BD

 AE2B61

 AED9C7

 AE1A56

 AEEAD2

 AE084C

 AEF CDC

 AE0047

 AEFFE6

 AEFFF1

# Harmonies

## Analogous

The Analogous color harmony consists of three colors that are next to each other on the color wheel.



A086A4



AE8294



B28282

# Triad

The Triadic color harmony groups three colors that are evenly spaced from another and form a triangle on the color wheel.



AE8294



8E916D



6096A9

# Complementary

The Complementary color scheme is a pair of colors which are on the opposite of each other on the color wheel.



AE8294



82AE9C

# Split Complementary

Split-complementary colors differ from the complementary color scheme. The scheme consists of three colors, the original color and two neighbors of the complement color.



5D989A



AE8294



7A9578

# Square

The Square scheme is like the rectangle color scheme, but the four colors are evenly spaced on the color wheel.



AE8294



A08B6C



689888



7291B0

# Rectangle

The Rectangle color scheme consists of four colors that form a rectangle on the color wheel.



AE8294



B08478



689888



5D97A5



# Sweetspot

The Sweet Spot groups the original color and five complimentary colors.



AE8294



E3D1D8



9C82AE



73676C



F2F2F2



737373



# Same Dimension

The Same Dimension uses a secret algorithm to generate beautiful new colors.



AE8294



E39FBB



AE8682



574E52



96003E



170009



# Inverse Universe

The Inverse Universe completely reimagines the original color for something new.



AE8294



E39FBB



82AAAE



574E52



96003E

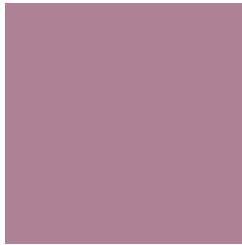


170009



# Previews

## White Background



This preview shows how the Hex color AE8294 looks on a white background.

## Color Contrast Check

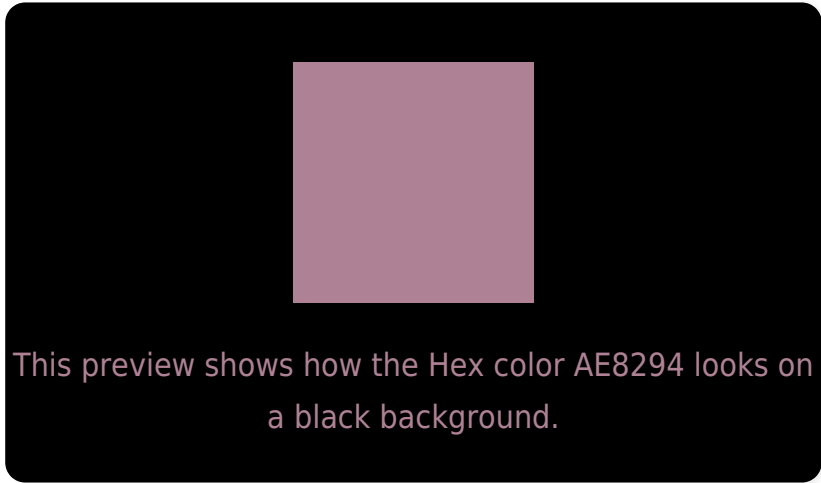
Large Text (above 18pt) WCAG AA ✓ Pass

Any Text WCAG AA × Fail

Large Text (above 18pt) WCAG AAA × Fail

Any Text WCAG AAA × Fail

# Black Background



## Color Contrast Check

Large Text (above 18pt) WCAG AA ✓ Pass

Any Text WCAG AA ✓ Pass

Large Text (above 18pt) WCAG AAA ✓ Pass

Any Text WCAG AAA × Fail

If you want to check with other color combinations, try the [Color Contrast Checker](#).



## Hex AE8294 Background



This preview shows how black text looks on a background with the Hex color AE8294.

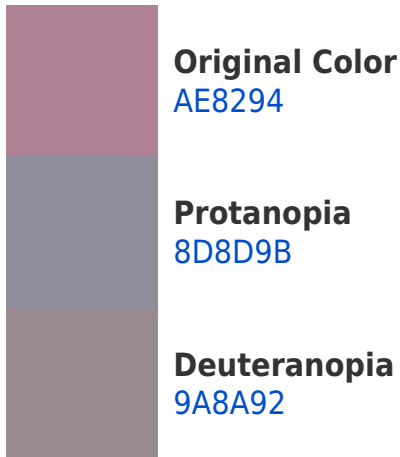



This preview shows how white text looks on a background with the Hex color AE8294.

# Color Blindness Simulation

Color vision deficiency is a very complex topic, and I could not describe the different causes any better than Wikipedia does, so if you want to learn more, you should check out their [article about color blindness](#).

## Dichromacy





**Tritanopia**  
AD838D

# Trichromacy



**Original Color**  
AE8294

**Protanomaly**  
998998

**Deuteranomaly**  
A18793

**Tritanomaly**  
AD8390

# Monochromacy



**Original Color**  
AE8294

**Achromatopsia**  
919191

**Achromatomaly**  
9C8C92

# CSS Examples

## Text

The CSS property to change the color of the text to Hex AE8294 is called "color". The color property can be set on classes, ids or directly on the HTML element.

This example shows how text in the color #AE8294 looks like.

```
.text, #text, p{  
    color:#AE8294  
}
```

If you want to add a text shadow in that color use the text-shadow property, you can generate a text shadow directly with our [CSS Text Shadow Generator](#).

Here you see how black text with a 4 pixel #AE8294 colored shadow looks like.

```
.shadow{ text-shadow: 4px 4px 2px #AE8294
}
```

## Border

The CSS property to change the border of an element to Hex AE8294 is called "border". The border property can be set on classes, ids or directly on the HTML element.

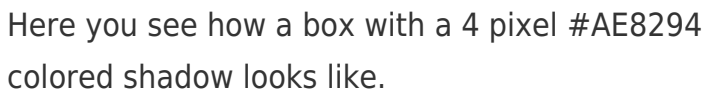
This example shows the color as border, it can be applied via the CSS property "border" or "border-color".

```
.border, #border, table{ border:4px solid
#AE8294 }
```

If only the border color should be changed use the property border-color.

```
.border{ border-color:#AE8294 }
```

If you want to add a box shadow in that color use:



Here you see how a box with a 4 pixel #AE8294 colored shadow looks like.

```
.boxshadow{ -moz-box-shadow:4px 4px 4px  
4px #AE8294; -webkit-box-shadow:4px 4px  
4px 4px #AE8294; box-shadow:4px 4px 4px  
4px #AE8294 }
```

# Background

The CSS property to change the background color of an element to Hex AE8294 is called "background". The background property can be set on classes, ids or directly on the HTML element.

```
.background, #background, body{  
background:#AE8294 }
```

If only the background color should be changed can be used:

```
.background{ background-color:#AE8294 }
```

This example shows the color as background, it is applied via the CSS property "background".

To optimize and compress your CSS code, you can use our [online CSS compressor and optimizer](#) based on csstidy. If you want to create a linear or radial gradient as background or border, check our [CSS Gradient Generator](#).



Hey! You found this booklet interesting? Support Converting Colors with the new Membership Option!

The pro membership hides all ads, plus gives you double the colors in the color bucket, and more awesome pro features!

**[Learn more, Memberships starting at \\$2.50/m!](#)**

**Follow me  
on Twitter!**

@ConvertingColor