

# Converting Colors

Hex(AE8459)

Have a look what the booklet for  
Hex(AE8459) contains.

<b>Hex(AE8459)</b> .....	3
<b><i>Conversions</i></b> .....	4
<b><i>Details</i></b> .....	6
<b><i>Harmonies</i></b> .....	11
<b><i>Previews</i></b> .....	23
<b><i>Color Blindness Simulation</i></b> .....	26
<b><i>CSS Examples</i></b> .....	29

**Color**

**Hex(AE8459)**

# Conversions

## Conversions Part 1

<b>Format</b>	<b>Color</b>
Hex	AE8459
RGB	174, 132, 89
RGB Percent	68%, 52%, 35%
CMY	0.3176, 0.4824, 0.6510
CMYK	0.00, 0.24, 0.49, 0.32
HSL	30°, 34%, 52%
HSV	30°, 49%, 68%
XYZ	27.5100, 26.2225, 13.0627
YIQ	139.6560, 38.8350, -4.4690

# Conversions

## Conversions Part 2

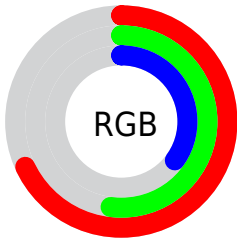
<b>Format</b>	<b>Color</b>
<b>RYB</b>	172, 174, 89
Decimal	11437145
CIELab	58.25, 10.71, 29.37
CIElCh	58, 31.264, 69.971
Yxy	26.2225, 0.4119, 0.3926
Android (android.graphics.Color)	4289627225 (0xFFAE8459)
YUV	139.6560, -24.9734, 30.1197
Hunter-Lab	51.2079, 6.2803, 20.7211

# Details

The Hex color **AE8459** is a dark color, and the websafe version is hex **CC9966**. A complement of this color would be **5983AE**, and the grayscale version is **8C8C8C**.

A 20% lighter version of the original color is **E7B98C**, and **77532A** is the 20% darker color. If you saturate the color by 10%, you get **AE7B48**, and if you desaturate by 10%, it is **AE8D6A**.

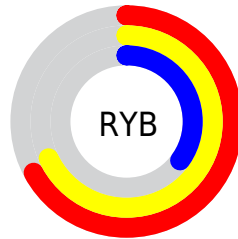
# Distribution



Red (68%)

Green (52%)

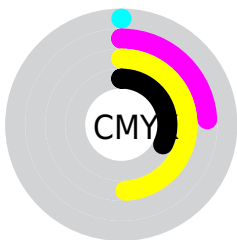
Blue (35%)



Red (67%)

Yellow (68%)

Blue (35%)

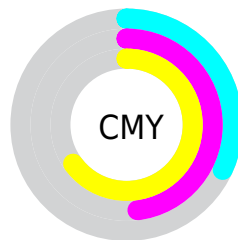


Cyan (0%)

Magenta (24%)

Yellow (49%)

Black (32%)



Cyan (32%)

Magenta (48%)

Yellow (65%)

# Brightness & Saturation Gradients

These gradients show how the Hex color AE8459 changes by changing the brightness by 10 percent. The first figure shows a shift by +10% for each color and the second figure -10%.

Similar to the brightness gradients but the following saturation gradients show a change of the Hex color AE8459 by changing the saturation by 10% instead.



 AE8459

 AE8459

FFFFFF

 926B41

 E7B98C

 77532A

 FFD5A6

 5D3C14

 FFF1C2

 442600

 FFFFDE

 2B1200

 FFFFFA

 080000

 000000

 AE8459

 AE8459

 AE7B48

 AE8D6A

 AE7336

 AE957C

 AE6A25

 AE9E8D

 AE6213

 AEA69F

 AE5902

 AEAFB0

 AE5800

 AEB8C1

 AEC0D3

 AEC9E4

 AED1F6

# Harmonies

## Analogous

The Analogous color harmony consists of three colors that are next to each other on the color wheel.



BE7B6A



AE8459



958D55

# Triad

The Triadic color harmony groups three colors that are evenly spaced from another and form a triangle on the color wheel.



AE8459



329B95



9B82B6

# Complementary

The Complementary color scheme is a pair of colors which are on the opposite of each other on the color wheel.



AE8459



5983AE

# Split Complementary

Split-complementary colors differ from the complementary color scheme. The scheme consists of three colors, the original color and two neighbors of the complement color.



748CC2



AE8459



2299AE

# Square

The Square scheme is like the rectangle color scheme, but the four colors are evenly spaced on the color wheel.



AE8459



569978



4694BF



B6799F

# Rectangle

The Rectangle color scheme consists of four colors that form a rectangle on the color wheel.



AE8459



82935C



4694BF



8F85BB



# Sweetspot

The Sweet Spot groups the original color and five complimentary colors.



AE8459



E3D2C1



AE5984



73695E



F2F2F2



737373



# Same Dimension

The Same Dimension uses a secret algorithm to generate beautiful new colors.



AE8459



E3A15D



AEAE59



57524E



964C00



170C00



# Inverse Universe

The Inverse Universe completely reimagines the original color for something new.



5983AE



5D9FE3



5959AE



4E5257



004A96

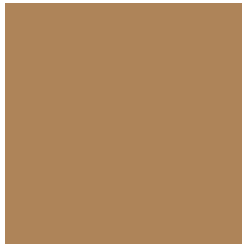


000B17



# Previews

## White Background



This preview shows how the Hex color AE8459 looks on a white background.

## Color Contrast Check

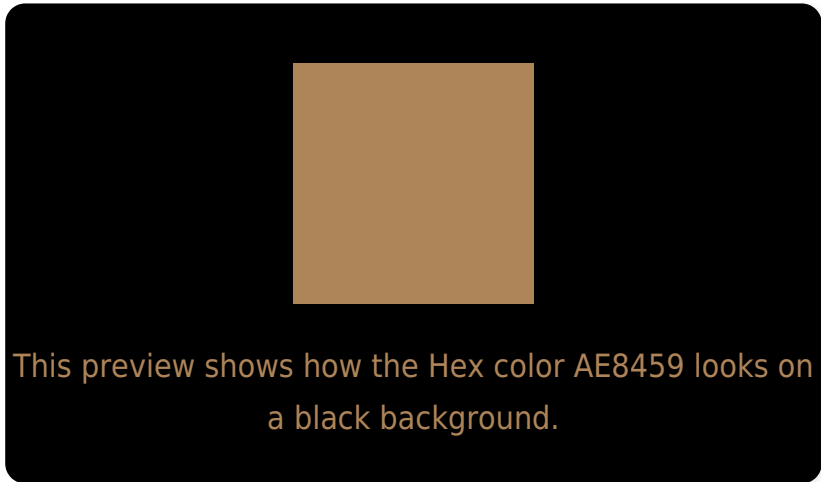
Large Text (above 18pt) WCAG AA ✓ Pass

Any Text WCAG AA × Fail

Large Text (above 18pt) WCAG AAA × Fail

Any Text WCAG AAA × Fail

# Black Background



## Color Contrast Check

Large Text (above 18pt) WCAG AA ✓ Pass

Any Text WCAG AA ✓ Pass

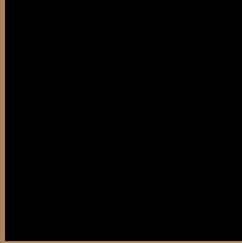
Large Text (above 18pt) WCAG AAA ✓ Pass

Any Text WCAG AAA × Fail

If you want to check with other color combinations, try the [Color Contrast Checker](#).



## Hex AE8459 Background



This preview shows how black text looks on a background with the Hex color AE8459.



This preview shows how white text looks on a background with the Hex color AE8459.

# Color Blindness Simulation

Color vision deficiency is a very complex topic, and I could not describe the different causes any better than Wikipedia does, so if you want to learn more, you should check out their [article about color blindness](#).

## Dichromacy



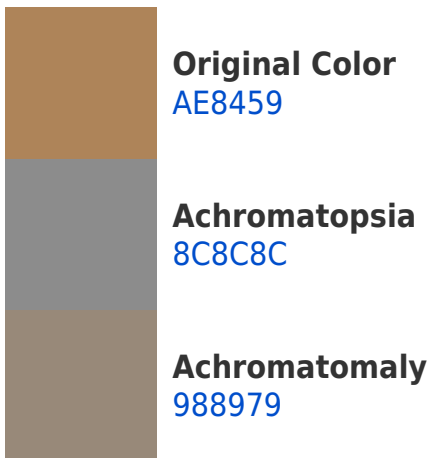


**Tritanopia**  
B27E88

# Trichromacy



# Monochromacy



# CSS Examples

## Text

The CSS property to change the color of the text to Hex AE8459 is called "color". The color property can be set on classes, ids or directly on the HTML element.

This example shows how text in the color #AE8459 looks like.

```
.text, #text, p{  
    color:#AE8459  
}
```

If you want to add a text shadow in that color use the text-shadow property, you can generate a text shadow directly with our [CSS Text Shadow Generator](#).

Here you see how black text with a 4 pixel #AE8459 colored shadow looks like.

```
.shadow{ text-shadow: 4px 4px 2px #AE8459
}
```

## Border

The CSS property to change the border of an element to Hex AE8459 is called "border". The border property can be set on classes, ids or directly on the HTML element.

This example shows the color as border, it can be applied via the CSS property "border" or "border-color".

```
.border, #border, table{ border:4px solid
#AE8459 }
```

If only the border color should be changed use the property `border-color`.

```
.border{ border-color:#AE8459 }
```

If you want to add a box shadow in that color use:

Here you see how a box with a 4 pixel #AE8459 colored shadow looks like.

```
.boxshadow{ -moz-box-shadow:4px 4px 4px  
4px #AE8459; -webkit-box-shadow:4px 4px  
4px 4px #AE8459; box-shadow:4px 4px 4px  
4px #AE8459 }
```

# Background

The CSS property to change the background color of an element to Hex AE8459 is called "background". The background property can be set on classes, ids or directly on the HTML element.

```
.background, #background, body{  
background:#AE8459 }
```

If only the background color should be changed can be used:

```
.background{ background-color:#AE8459 }
```

This example shows the color as background, it is applied via the CSS property "background".

To optimize and compress your CSS code, you can use our [online CSS compressor and optimizer](#) based on csstidy. If you want to create a linear or radial gradient as background or border, check our [CSS Gradient Generator](#).



Hey! You found this booklet interesting? Support Converting Colors with the new Membership Option!

The pro membership hides all ads, plus gives you double the colors in the color bucket, and more awesome pro features!

**[Learn more, Memberships starting at \\$2.50/m!](#)**

**Follow me  
on Twitter!**

@ConvertingColor