

# Converting Colors

Hex(AE848D)

Have a look what the booklet for  
Hex(AE848D) contains.

|  |    |
|--|----|
| <b>Hex(AE848D)</b> .....                       | 3  |
| <i><b>Conversions</b></i> .....                | 4  |
| <i><b>Details</b></i> .....                    | 6  |
| <i><b>Harmonies</b></i> .....                  | 11 |
| <i><b>Previews</b></i> .....                   | 23 |
| <i><b>Color Blindness Simulation</b></i> ..... | 26 |
| <i><b>CSS Examples</b></i> .....               | 29 |

# Color

**Hex(AE848D)**

# Conversions

## Conversions Part 1

| <b>Format</b> | <b>Color</b>               |
|---------------|----------------------------|
| Hex           | AE848D                     |
| RGB           | 174, 132, 141              |
| RGB Percent   | 68%, 52%, 55%              |
| CMY           | 0.3176, 0.4824, 0.4471     |
| CMYK          | 0.00, 0.24, 0.19, 0.32     |
| HSL           | 347°, 21%, 60%             |
| HSV           | 347°, 24%, 68%             |
| XYZ           | 30.5145, 27.4243, 28.8844  |
| YIQ           | 145.5840, 22.1430, 11.7030 |

# Conversions

## Conversions Part 2

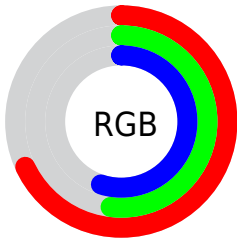
| <b>Format</b>                       | <b>Color</b>                  |
|-------------------------------------|-------------------------------|
| <b>RYB</b>                          | 174, 132, 141                 |
| Decimal                             | 11437197                      |
| CIELab                              | 59.37, 17.52, 1.43            |
| CIElCh                              | 59, 17.577, 4.671             |
| Yxy                                 | 27.4243, 0.3515,<br>0.3159    |
| Android<br>(android.graphics.Color) | 4289627277<br>(0xFFAE848D)    |
| YUV                                 | 145.5840, -2.2599,<br>24.9208 |
| Hunter-Lab                          | 52.3682, 12.3662,<br>3.9555   |

# Details

The Hex color **AE848D** is a dark color, and the websafe version is hex **CC9999**. A complement of this color would be **84AEA5**, and the grayscale version is **929292**.

A 20% lighter version of the original color is **E6B9C3**, and **79525B** is the 20% darker color. If you saturate the color by 10%, you get **AE737F**, and if you desaturate by 10%, it is **AE959B**.

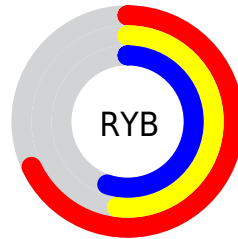
# Distribution



Red (68%)

Green (52%)

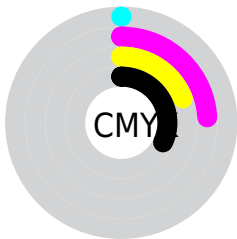
Blue (55%)



Red (68%)

Yellow (52%)

Blue (55%)

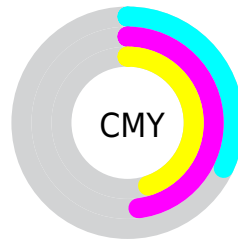


Cyan (0%)

Magenta (24%)

Yellow (19%)

Black (32%)



Cyan (32%)

Magenta (48%)

Yellow (45%)

# Brightness & Saturation Gradients

These gradients show how the Hex color AE848D changes by changing the brightness by 10 percent. The first figure shows a shift by +10% for each color and the second figure -10%.

Similar to the brightness gradients but the following saturation gradients show a change of the Hex color AE848D by changing the saturation by 10% instead.



 AE848D

 AE848D

FFFFFF

 936B73

 E6B9C3

 79525B

 FFD5DE

 5F3B44

 FFF1FB

 47252D

 301019

 1C0001

 000000

 AE848D

 AE848D

 AE737F

 AE959B

 AE6172

 AEA7A8

 AE5064

 AEB8B6

 AE3E56

 AECAC4

 AE2D49

 AEDBD1

 AE1C3B

 AEECDF

 AE0A2D

 AEFEED

 AE0025

 AEFFFA

 AEFFFF

# Harmonies

## Analogous

The Analogous color harmony consists of three colors that are next to each other on the color wheel.



A5869C



AE848D



AE857E

# Triad

The Triadic color harmony groups three colors that are evenly spaced from another and form a triangle on the color wheel.



AE848D



879375



6E94AA

# Complementary

The Complementary color scheme is a pair of colors which are on the opposite of each other on the color wheel.



AE848D



84AEA5

# Split Complementary

Split-complementary colors differ from the complementary color scheme. The scheme consists of three colors, the original color and two neighbors of the complement color.



6597A0



AE848D



769781

# Square

The Square scheme is like the rectangle color scheme, but the four colors are evenly spaced on the color wheel.



AE848D



988F70



699891



808FAD

# Rectangle

The Rectangle color scheme consists of four colors that form a rectangle on the color wheel.



AE848D



AA8876



699891



6995A8



# Sweetspot

The Sweet Spot groups the original color and five complimentary colors.



AE848D



E3D3D6



A584AE



736A6C



F2F2F2



737373



# Same Dimension

The Same Dimension uses a secret algorithm to generate beautiful new colors.



AE848D



E3A1AF



AE9084



574E50



960020



170005



# Inverse Universe

The Inverse Universe completely reimagines the original color for something new.



AE848D



E3A1AF



84A2AE



574E50



960020

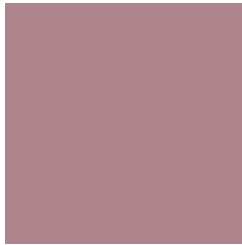


170005



# Previews

## White Background



This preview shows how the Hex color AE848D looks on a white background.

## Color Contrast Check

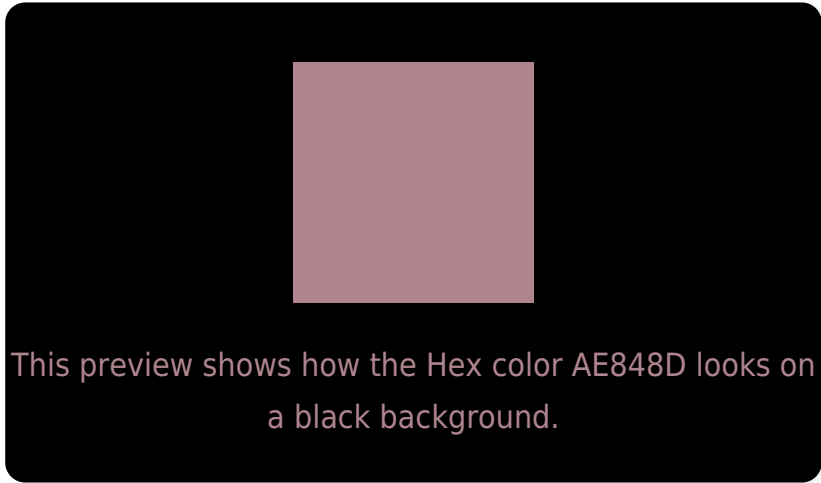
Large Text (above 18pt) WCAG AA ✓ Pass

Any Text WCAG AA × Fail

Large Text (above 18pt) WCAG AAA × Fail

Any Text WCAG AAA × Fail

# Black Background



## Color Contrast Check

Large Text (above 18pt) WCAG AA ✓ Pass

Any Text WCAG AA ✓ Pass

Large Text (above 18pt) WCAG AAA ✓ Pass

Any Text WCAG AAA × Fail

If you want to check with other color combinations, try the [Color Contrast Checker](#).



## Hex AE848D Background



This preview shows how black text looks on a background with the Hex color AE848D.



This preview shows how white text looks on a background with the Hex color AE848D.

# Color Blindness Simulation

Color vision deficiency is a very complex topic, and I could not describe the different causes any better than Wikipedia does, so if you want to learn more, you should check out their [article about color blindness](#).

## Dichromacy





**Tritanopia**  
AE848E

# Trichromacy



**Original Color**  
AE848D

**Protanomaly**  
9C8A91

**Deuteranomaly**  
A4888C

**Tritanomaly**  
AE848E

# Monochromacy



**Original Color**  
AE848D

**Achromatopsia**  
929292

**Achromatomaly**  
9C8D90

# CSS Examples

## Text

The CSS property to change the color of the text to Hex AE848D is called "color". The color property can be set on classes, ids or directly on the HTML element.

This example shows how text in the color #AE848D looks like.

```
.text, #text, p{  
    color:#AE848D  
}
```

If you want to add a text shadow in that color use the text-shadow property, you can generate a text shadow directly with our [CSS Text Shadow Generator](#).

Here you see how black text with a 4 pixel #AE848D colored shadow looks like.

```
.shadow{ text-shadow: 4px 4px 2px #AE848D
}
```

## Border

The CSS property to change the border of an element to Hex AE848D is called "border". The border property can be set on classes, ids or directly on the HTML element.

This example shows the color as border, it can be applied via the CSS property "border" or "border-color".

```
.border, #border, table{ border:4px solid
#AE848D }
```

If only the border color should be changed use the property `border-color`.

```
.border{ border-color:#AE848D }
```

If you want to add a box shadow in that color use:

Here you see how a box with a 4 pixel #AE848D colored shadow looks like.

```
.boxshadow{ -moz-box-shadow:4px 4px 4px  
4px #AE848D; -webkit-box-shadow:4px 4px  
4px 4px #AE848D; box-shadow:4px 4px 4px  
4px #AE848D }
```

# Background

The CSS property to change the background color of an element to Hex AE848D is called "background". The background property can be set on classes, ids or directly on the HTML element.

```
.background, #background, body{  
background:#AE848D }
```

If only the background color should be changed can be used:

```
.background{ background-color:#AE848D }
```

This example shows the color as background, it is applied via the CSS property "background".

To optimize and compress your CSS code, you can use our [online CSS compressor and optimizer](#) based on csstidy. If you want to create a linear or radial gradient as background or border, check our [CSS Gradient Generator](#).



Hey! You found this booklet interesting? Support Converting Colors with the new Membership Option!

The pro membership hides all ads, plus gives you double the colors in the color bucket, and more awesome pro features!

**[Learn more, Memberships starting at \\$2.50/m!](#)**

**Follow me  
on Twitter!**

@ConvertingColor