

Converting Colors

Hex(AE868E)

Have a look what the booklet for
Hex(AE868E) contains.

Hex(AE868E)	3
<i>Conversions</i>	4
<i>Details</i>	6
<i>Harmonies</i>	11
<i>Previews</i>	23
<i>Color Blindness Simulation</i>	26
<i>CSS Examples</i>	29

Color

Hex(AE868E)

Conversions

Conversions Part 1

Format	Color
Hex	AE868E
RGB	174, 134, 142
RGB Percent	68%, 53%, 56%
CMY	0.3176, 0.4745, 0.4431
CMYK	0.00, 0.23, 0.18, 0.32
HSL	348°, 20%, 60%
HSV	348°, 23%, 68%
XYZ	30.8631, 28.0019, 29.3694
YIQ	146.8720, 21.2720, 10.9680

Conversions

Conversions Part 2

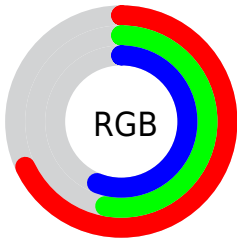
Format	Color
R_{YB}	174, 134, 142
Decimal	11437710
CIE Lab	59.89, 16.55, 1.62
CIE LCh	60, 16.632, 5.596
Yxy	28.0019, 0.3498, 0.3174
Android (android.graphics.Color)	4289627790 (0xFFAE868E)
YUV	146.8720, -2.4019, 23.7913
Hunter-Lab	52.9168, 11.5038, 4.1351

Details

The Hex color **AE868E** is a dark color, and the websafe version is hex **CC9999**. A complement of this color would be **86AEA6**, and the grayscale version is **939393**.

A 20% lighter version of the original color is **E6BBC4**, and **79545C** is the 20% darker color. If you saturate the color by 10%, you get **AE7580**, and if you desaturate by 10%, it is **AE979C**.

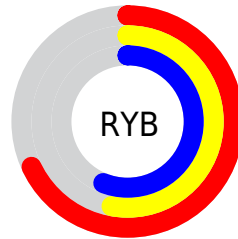
Distribution



Red (68%)

Green (53%)

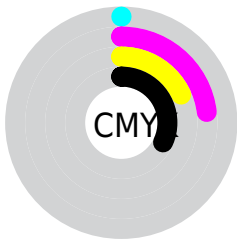
Blue (56%)



Red (68%)

Yellow (53%)

Blue (56%)

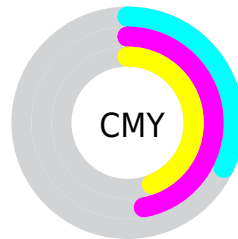


Cyan (0%)

Magenta (23%)

Yellow (18%)

Black (32%)



Cyan (32%)

Magenta (47%)

Yellow (44%)

Brightness & Saturation Gradients

These gradients show how the Hex color AE868E changes by changing the brightness by 10 percent. The first figure shows a shift by +10% for each color and the second figure -10%.

Similar to the brightness gradients but the following saturation gradients show a change of the Hex color AE868E by changing the saturation by 10% instead.

 AE868E

 AE868E

FFFFFF

 936D74

 E6BBC4

 79545C

 FFD7E0

 603D44

 FFF4FC

 47262E

 30111A

 1E0001

 000000

 AE868E

 AE868E

 AE7580

 AE979C

 AE6372

 AEA9AA

 AE5264

 AEBAB8

 AE4056

 AECCCC6

 AE2F48

 AEDDD4

 AE1E3A

 AEEEE2

 AE0C2D

 AEFFEF

 AE0023

 AEFFFD

 AEFFFF

Harmonies

Analogous

The Analogous color harmony consists of three colors that are next to each other on the color wheel.



A6889D



AE868E



AE8780

Triad

The Triadic color harmony groups three colors that are evenly spaced from another and form a triangle on the color wheel.



AE868E



889578



7295AA

Complementary

The Complementary color scheme is a pair of colors which are on the opposite of each other on the color wheel.



AE868E



86AEA6

Split Complementary

Split-complementary colors differ from the complementary color scheme. The scheme consists of three colors, the original color and two neighbors of the complement color.



6998A1



AE868E



789884

Square

The Square scheme is like the rectangle color scheme, but the four colors are evenly spaced on the color wheel.



AE868E



999073



6C9993



8391AD

Rectangle

The Rectangle color scheme consists of four colors that form a rectangle on the color wheel.



AE868E



AA8A79



6C9993



6E96A8

Sweetspot

The Sweet Spot groups the original color and five complimentary colors.



AE868E



E3D3D6



A686AE



736A6B



F2F2F2



737373

Same Dimension

The Same Dimension uses a secret algorithm to generate beautiful new colors.



AE868E



E3A3B0



AE9286



574E50



96001E



170005

Inverse Universe

The Inverse Universe completely reimagines the original color for something new.



AE868E



E3A3B0



86A2AE



574E50



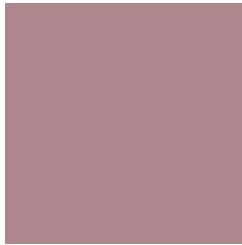
96001E



170005

Previews

White Background



This preview shows how the Hex color AE868E looks on a white background.

Color Contrast Check

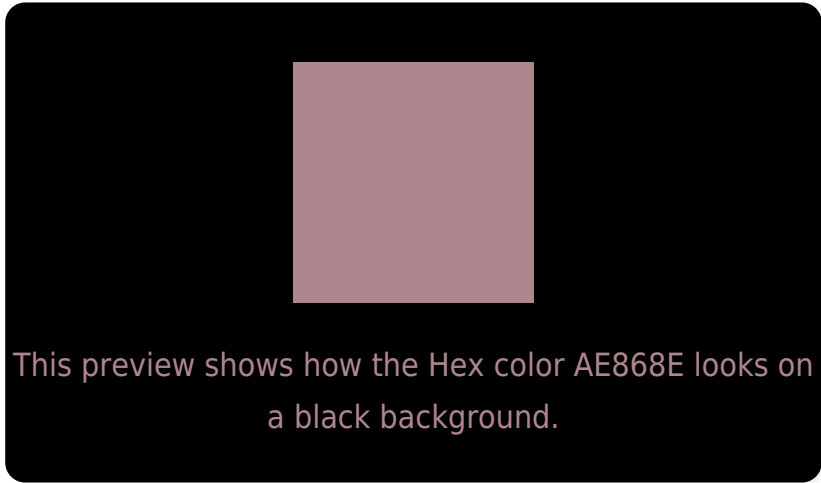
Large Text (above 18pt) WCAG AA ✓ Pass

Any Text WCAG AA ✗ Fail

Large Text (above 18pt) WCAG AAA ✗ Fail

Any Text WCAG AAA ✗ Fail

Black Background



Color Contrast Check

Large Text (above 18pt) WCAG AA ✓ Pass

Any Text WCAG AA ✓ Pass

Large Text (above 18pt) WCAG AAA ✓ Pass

Any Text WCAG AAA × Fail

If you want to check with other color combinations, try the [Color Contrast Checker](#).

Hex AE868E Background



This preview shows how black text looks on a background with the Hex color AE868E.

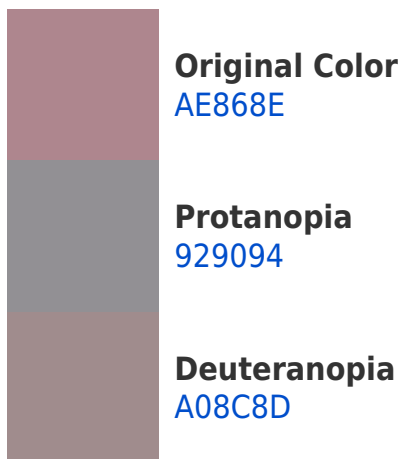


This preview shows how white text looks on a background with the Hex color AE868E.

Color Blindness Simulation

Color vision deficiency is a very complex topic, and I could not describe the different causes any better than Wikipedia does, so if you want to learn more, you should check out their [article about color blindness](#).

Dichromacy





Tritanopia
AE8690

Trichromacy



Original Color
AE868E

Protanomaly
9C8C92

Deuteranomaly
A58A8D

Tritanomaly
AE868F

Monochromacy



Original Color
AE868E

Achromatopsia
939393

Achromatomaly
9D8E91

CSS Examples

Text

The CSS property to change the color of the text to Hex AE868E is called "color". The color property can be set on classes, ids or directly on the HTML element.

This example shows how text in the color #AE868E looks like.

```
.text, #text, p{  
    color:#AE868E  
}
```

If you want to add a text shadow in that color use the text-shadow property, you can generate a text shadow directly with our [CSS Text Shadow Generator](#).

Here you see how black text with a 4 pixel #AE868E colored shadow looks like.

```
.shadow{ text-shadow: 4px 4px 2px #AE868E
}
```

Border

The CSS property to change the border of an element to Hex AE868E is called "border". The border property can be set on classes, ids or directly on the HTML element.

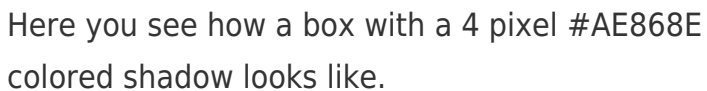
This example shows the color as border, it can be applied via the CSS property "border" or "border-color".

```
.border, #border, table{ border:4px solid
#AE868E }
```

If only the border color should be changed use the property `border-color`.

```
.border{ border-color:#AE868E }
```

If you want to add a box shadow in that color use:



Here you see how a box with a 4 pixel `#AE868E` colored shadow looks like.

```
.boxshadow{ -moz-box-shadow:4px 4px 4px  
4px #AE868E; -webkit-box-shadow:4px 4px  
4px 4px #AE868E; box-shadow:4px 4px 4px  
4px #AE868E }
```

Background

The CSS property to change the background color of an element to Hex AE868E is called "background". The background property can be set on classes, ids or directly on the HTML element.

```
.background, #background, body{  
background:#AE868E }
```

If only the background color should be changed can be used:

```
.background{ background-color:#AE868E }
```

This example shows the color as background, it is applied via the CSS property "background".

To optimize and compress your CSS code, you can use our [online CSS compressor and optimizer](#) based on csstidy. If you want to create a linear or radial gradient as background or border, check our [CSS Gradient Generator](#).

Hey! You found this booklet interesting? Support Converting Colors with the new Membership Option!

The pro membership hides all ads, plus gives you double the colors in the color bucket, and more awesome pro features!

[Learn more, Memberships starting at \\$2.50/m!](#)

**Follow me
on Twitter!**

@ConvertingColor