

# Converting Colors

Hex(AE8B66)

Have a look what the booklet for  
Hex(AE8B66) contains.

<b>Hex(AE8B66)</b> .....	3
<i><b>Conversions</b></i> .....	4
<i><b>Details</b></i> .....	6
<i><b>Harmonies</b></i> .....	11
<i><b>Previews</b></i> .....	23
<i><b>Color Blindness Simulation</b></i> .....	26
<i><b>CSS Examples</b></i> .....	29

**Color**

**Hex(AE8B66)**

# Conversions

## Conversions Part 1

<b>Format</b>	<b>Color</b>
Hex	AE8B66
RGB	174, 139, 102
RGB Percent	68%, 55%, 40%
CMY	0.3176, 0.4549, 0.6000
CMYK	0.00, 0.20, 0.41, 0.32
HSL	31°, 31%, 54%
HSV	31°, 41%, 68%
XYZ	29.0865, 28.4232, 16.5236
YIQ	145.2470, 32.7370, -4.0870

# Conversions

## Conversions Part 2

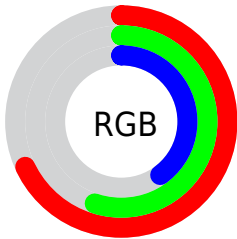
<b>Format</b>	<b>Color</b>
<b>R<sub>YB</sub></b>	170, 174, 102
Decimal	11438950
CIE <sub>Lab</sub>	60.27, 8.19, 24.82
CIE <sub>LCh</sub>	60, 26.138, 71.728
Yxy	28.4232, 0.3929, 0.3839
Android (android.graphics.Color)	4289629030 (0xFFAE8B66)
YUV	145.2470, -21.3208, 25.2164
Hunter-Lab	53.3134, 4.0866, 18.9435

# Details

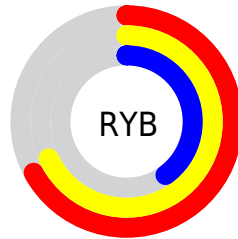
The Hex color **AE8B66** is a dark color, and the websafe version is hex **CC9966**. A complement of this color would be **6689AE**, and the grayscale version is **919191**.

A 20% lighter version of the original color is **E7C099**, and **785936** is the 20% darker color. If you saturate the color by 10%, you get **AE8355**, and if you desaturate by 10%, it is **AE9377**.

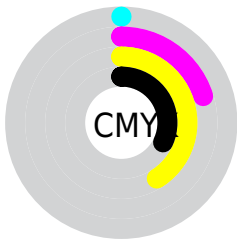
# Distribution



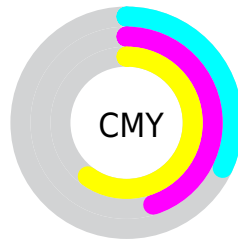
- Red (68%)
- Green (55%)
- Blue (40%)



- Red (67%)
- Yellow (68%)
- Blue (40%)



- Cyan (0%)
- Magenta (20%)
- Yellow (41%)
- Black (32%)



- Cyan (32%)
- Magenta (45%)
- Yellow (60%)

# Brightness & Saturation Gradients

These gradients show how the Hex color AE8B66 changes by changing the brightness by 10 percent. The first figure shows a shift by +10% for each color and the second figure -10%.

Similar to the brightness gradients but the following saturation gradients show a change of the Hex color AE8B66 by changing the saturation by 10% instead.



 AE8B66

 AE8B66

FFFFFF

 93724E

 E7C099

 785936

 FFDCB4

 5E4220

 FFF9D0

 452C0A

 FFFFEC

 2D1700

 140000

 000000

 AE8B66

 AE8B66

 AE8355

 AE9377

 AE7A43

 AE9C89

 AE7232

 AEA49A

 AE6920

 AEADAC

 AE610F

 AEB5BD

 AE5900

 AEBECE

 AEC6E0

 AECFF1

 AED7FF

# Harmonies

## Analogous

The Analogous color harmony consists of three colors that are next to each other on the color wheel.



BC8474



AE8B66



989364

# Triad

The Triadic color harmony groups three colors that are evenly spaced from another and form a triangle on the color wheel.



AE8B66



4E9E9A



A088B4

# Complementary

The Complementary color scheme is a pair of colors which are on the opposite of each other on the color wheel.



AE8B66



6689AE

# Split Complementary

Split-complementary colors differ from the complementary color scheme. The scheme consists of three colors, the original color and two neighbors of the complement color.



8190BE



AE8B66



4A9CAF

# Square

The Square scheme is like the rectangle color scheme, but the four colors are evenly spaced on the color wheel.



AE8B66



649D82



5F98BC



B682A0

# Rectangle

The Rectangle color scheme consists of four colors that form a rectangle on the color wheel.



AE8B66



88976A



5F98BC



968BB8



# Sweetspot

The Sweet Spot groups the original color and five complimentary colors.



AE8B66



E3D6C8



AE668A



736B63



F2F2F2



737373



# Same Dimension

The Same Dimension uses a secret algorithm to generate beautiful new colors.



AE8B66



E3AC71



AEAE66



57524E



964D00



170C00



# Inverse Universe

The Inverse Universe completely reimagines the original color for something new.



6689AE



71A9E3



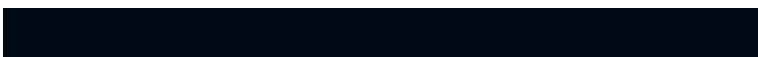
6666AE



4E5257



004996

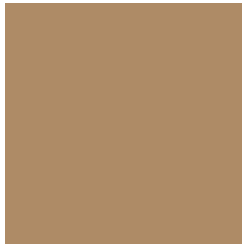


000B17



# Previews

## White Background



This preview shows how the Hex color AE8B66 looks on a white background.

## Color Contrast Check

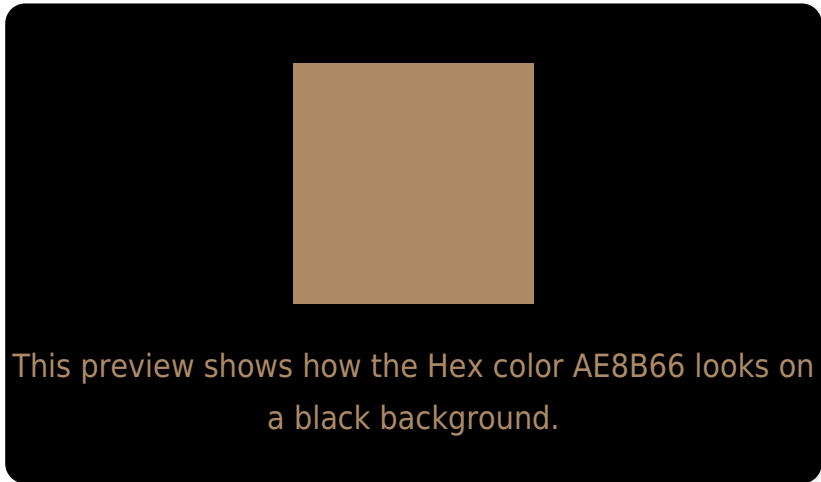
Large Text (above 18pt) WCAG AA ✓ Pass

Any Text WCAG AA × Fail

Large Text (above 18pt) WCAG AAA × Fail

Any Text WCAG AAA × Fail

# Black Background



## Color Contrast Check

Large Text (above 18pt) WCAG AA ✓ Pass

Any Text WCAG AA ✓ Pass

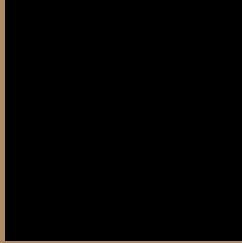
Large Text (above 18pt) WCAG AAA ✓ Pass

Any Text WCAG AAA × Fail

If you want to check with other color combinations, try the [Color Contrast Checker](#).



## Hex AE8B66 Background



This preview shows how black text looks on a background with the Hex color AE8B66.



This preview shows how white text looks on a background with the Hex color AE8B66.

# Color Blindness Simulation

Color vision deficiency is a very complex topic, and I could not describe the different causes any better than Wikipedia does, so if you want to learn more, you should check out their [article about color blindness](#).

## Dichromacy



**Original Color**  
AE8B66

**Protanopia**  
9D9169

**Deuteranopia**  
AD8B66

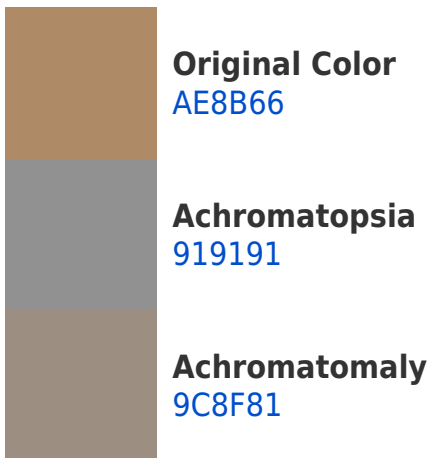


**Tritanopia**  
B28690

# Trichromacy



# Monochromacy



# CSS Examples

## Text

The CSS property to change the color of the text to Hex AE8B66 is called "color". The color property can be set on classes, ids or directly on the HTML element.

This example shows how text in the color #AE8B66 looks like.

```
.text, #text, p{  
    color:#AE8B66  
}
```

If you want to add a text shadow in that color use the text-shadow property, you can generate a text shadow directly with our [CSS Text Shadow Generator](#).

Here you see how black text with a 4 pixel #AE8B66 colored shadow looks like.

```
.shadow{ text-shadow: 4px 4px 2px #AE8B66
}
```

## Border

The CSS property to change the border of an element to Hex AE8B66 is called "border". The border property can be set on classes, ids or directly on the HTML element.

This example shows the color as border, it can be applied via the CSS property "border" or "border-color".

```
.border, #border, table{ border:4px solid
#AE8B66 }
```

If only the border color should be changed use the property `border-color`.

```
.border{ border-color:#AE8B66 }
```

If you want to add a box shadow in that color use:

Here you see how a box with a 4 pixel #AE8B66 colored shadow looks like.

```
.boxshadow{ -moz-box-shadow:4px 4px 4px  
4px #AE8B66; -webkit-box-shadow:4px 4px  
4px 4px #AE8B66; box-shadow:4px 4px 4px  
4px #AE8B66 }
```

# Background

The CSS property to change the background color of an element to Hex AE8B66 is called "background". The background property can be set on classes, ids or directly on the HTML element.

```
.background, #background, body{  
background:#AE8B66 }
```

If only the background color should be changed can be used:

```
.background{ background-color:#AE8B66 }
```

This example shows the color as background, it is applied via the CSS property "background".

To optimize and compress your CSS code, you can use our [online CSS compressor and optimizer](#) based on csstidy. If you want to create a linear or radial gradient as background or border, check our [CSS Gradient Generator](#).



Hey! You found this booklet interesting? Support Converting Colors with the new Membership Option!

The pro membership hides all ads, plus gives you double the colors in the color bucket, and more awesome pro features!

**[Learn more, Memberships starting at \\$2.50/m!](#)**

**Follow me  
on Twitter!**

@ConvertingColor