

# Converting Colors

Hex(AE8B8B)

Have a look what the booklet for  
Hex(AE8B8B) contains.

<b>Hex(AE8B8B)</b> .....	3
<i><b>Conversions</b></i> .....	4
<i><b>Details</b></i> .....	6
<i><b>Harmonies</b></i> .....	11
<i><b>Previews</b></i> .....	23
<i><b>Color Blindness Simulation</b></i> .....	26
<i><b>CSS Examples</b></i> .....	29

# Color

Hex(AE8B8B)

# Conversions

## Conversions Part 1

<b>Format</b>	<b>Color</b>
Hex	AE8B8B
RGB	174, 139, 139
RGB Percent	68%, 55%, 55%
CMY	0.3176, 0.4549, 0.4549
CMYK	0.00, 0.20, 0.20, 0.32
HSL	0°, 18%, 61%
HSV	0°, 20%, 68%
XYZ	31.3484, 29.3280, 28.4347
YIQ	149.4650, 20.8600, 7.4200

# Conversions

## Conversions Part 2

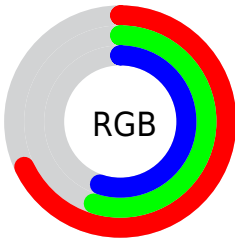
<b>Format</b>	<b>Color</b>
<b>R<sub>YB</sub></b>	174, 139, 139
Decimal	11438987
CIE <sub>Lab</sub>	61.07, 13.26, 5.04
CIE <sub>LCh</sub>	61, 14.186, 20.817
Yxy	29.3280, 0.3518, 0.3291
Android (android.graphics.Color)	4289629067 (0xFFAE8B8B)
YUV	149.4650, -5.1592, 21.5172
Hunter-Lab	54.1553, 8.5548, 6.7780

# Details

The Hex color **AE8B8B** is a dark color, and the websafe version is hex **CC9999**. A complement of this color would be **8BAEAE**, and the grayscale version is **959595**.

A 20% lighter version of the original color is **E6C1C0**, and **795959** is the 20% darker color. If you saturate the color by 10%, you get **AE7A7A**, and if you desaturate by 10%, it is **AE9C9C**.

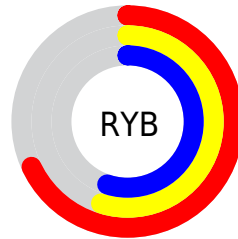
# Distribution



Red (68%)

Green (55%)

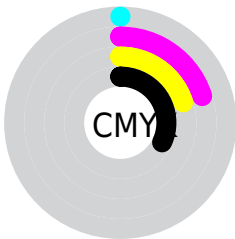
Blue (55%)



Red (68%)

Yellow (55%)

Blue (55%)

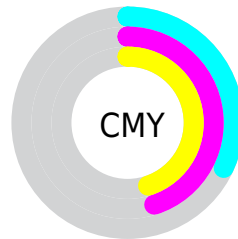


Cyan (0%)

Magenta (20%)

Yellow (20%)

Black (32%)



Cyan (32%)

Magenta (45%)

Yellow (45%)

# Brightness & Saturation Gradients

These gradients show how the Hex color AE8B8B changes by changing the brightness by 10 percent. The first figure shows a shift by +10% for each color and the second figure -10%.

Similar to the brightness gradients but the following saturation gradients show a change of the Hex color AE8B8B by changing the saturation by 10% instead.





AE8B8B



AE8B8B

FFFFFF



937172



E6C1C0



795959



FFDDDC



604142



FFF9F9



472B2C



301617



1D0000



000000



AE8B8B



AE8B8B



AE7A7A



AE9C9C

 AE6868

 AEAEAE

 AE5757

 AEBFBF

 AE4545

 AED1D1

 AE3434

 AEE2E2

 AE2323

 AEF3F3

 AE1111

 AEFFFF

 AE0000

# Harmonies

## Analogous

The Analogous color harmony consists of three colors that are next to each other on the color wheel.



AA8B98



AE8B8B



AB8D80

# Triad

The Triadic color harmony groups three colors that are evenly spaced from another and form a triangle on the color wheel.



AE8B8B



869983



8196AC

# Complementary

The Complementary color scheme is a pair of colors which are on the opposite of each other on the color wheel.



AE8B8B



8BAEAE

# Split Complementary

Split-complementary colors differ from the complementary color scheme. The scheme consists of three colors, the original color and two neighbors of the complement color.



7599A6



AE8B8B



799A8F

# Square

The Square scheme is like the rectangle color scheme, but the four colors are evenly spaced on the color wheel.



AE8B8B



94957C



739B9C



9191AB

# Rectangle

The Rectangle color scheme consists of four colors that form a rectangle on the color wheel.



AE8B8B



A5907C



739B9C



7C97AB



# Sweetspot

The Sweet Spot groups the original color and five complimentary colors.



AE8B8B



E3D5D5



AE8BAE



736B6B



F2F2F2



737373



# Same Dimension

The Same Dimension uses a secret algorithm to generate beautiful new colors.



AE8B8B



E3ACAC



AE9C8B



574E4E



960000



170000



# Inverse Universe

The Inverse Universe completely reimagines the original color for something new.



8BAEAE



ACE3E3



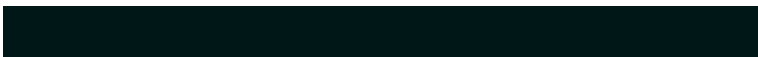
8B9CAE



4E5757



009696

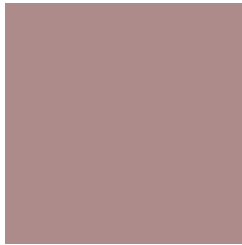


001717



# Previews

## White Background



This preview shows how the Hex color AE8B8B looks on a white background.

## Color Contrast Check

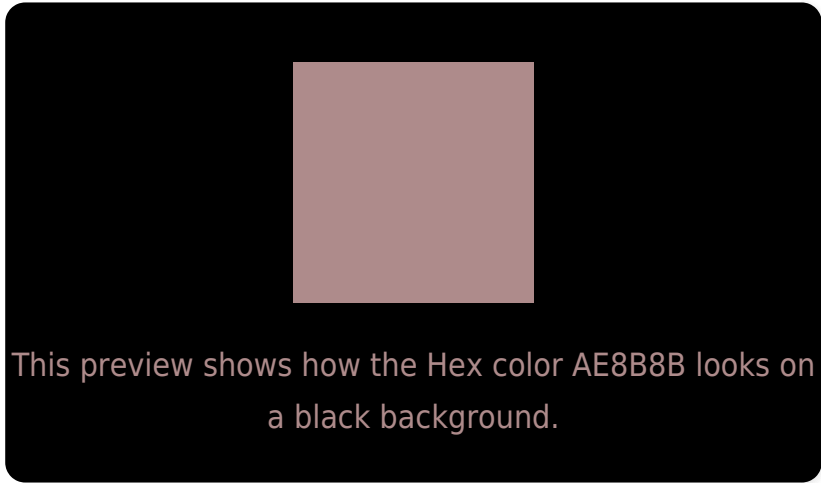
Large Text (above 18pt) WCAG AA ✓ Pass

Any Text WCAG AA × Fail

Large Text (above 18pt) WCAG AAA × Fail

Any Text WCAG AAA × Fail

# Black Background



## Color Contrast Check

Large Text (above 18pt) WCAG AA ✓ Pass

Any Text WCAG AA ✓ Pass

Large Text (above 18pt) WCAG AAA ✓ Pass

Any Text WCAG AAA × Fail

If you want to check with other color combinations, try the [Color Contrast Checker](#).



## Hex AE8B8B Background



This preview shows how black text looks on a background with the Hex color AE8B8B.

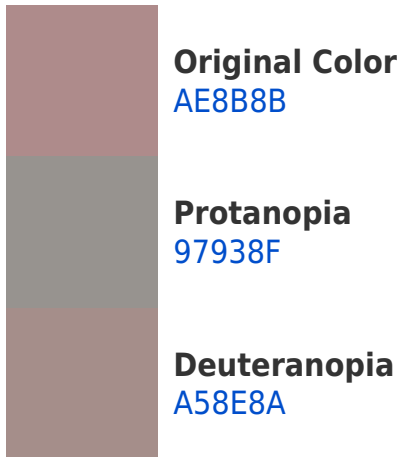



This preview shows how white text looks on a background with the Hex color AE8B8B.

# Color Blindness Simulation

Color vision deficiency is a very complex topic, and I could not describe the different causes any better than Wikipedia does, so if you want to learn more, you should check out their [article about color blindness](#).

## Dichromacy





**Tritanopia**  
AF8A94

# Trichromacy



**Original Color**  
AE8B8B

**Protanomaly**  
9F908E

**Deuteranomaly**  
A88D8A

**Tritanomaly**  
AF8A91

# Monochromacy



**Original Color**  
AE8B8B

**Achromatopsia**  
959595

**Achromatomaly**  
9E9191

# CSS Examples

## Text

The CSS property to change the color of the text to Hex AE8B8B is called "color". The color property can be set on classes, ids or directly on the HTML element.

This example shows how text in the color #AE8B8B looks like.

```
.text, #text, p{  
  color:#AE8B8B  
}
```

If you want to add a text shadow in that color use the text-shadow property, you can generate a text shadow directly with our [CSS Text Shadow Generator](#).

Here you see how black text with a 4 pixel #AE8B8B colored shadow looks like.

```
.shadow{ text-shadow: 4px 4px 2px #AE8B8B
}
```

## Border

The CSS property to change the border of an element to Hex AE8B8B is called "border". The border property can be set on classes, ids or directly on the HTML element.

This example shows the color as border, it can be applied via the CSS property "border" or "border-color".

```
.border, #border, table{ border:4px solid
#AE8B8B }
```

If only the border color should be changed use the property `border-color`.

```
.border{ border-color:#AE8B8B }
```

If you want to add a box shadow in that color use:

Here you see how a box with a 4 pixel #AE8B8B colored shadow looks like.

```
.boxshadow{ -moz-box-shadow:4px 4px 4px  
4px #AE8B8B; -webkit-box-shadow:4px 4px  
4px 4px #AE8B8B; box-shadow:4px 4px 4px  
4px #AE8B8B }
```

# Background

The CSS property to change the background color of an element to Hex AE8B8B is called "background". The background property can be set on classes, ids or directly on the HTML element.

```
.background, #background, body{  
background:#AE8B8B }
```

If only the background color should be changed can be used:

```
.background{ background-color:#AE8B8B }
```

This example shows the color as background, it is applied via the CSS property "background".

To optimize and compress your CSS code, you can use our [online CSS compressor and optimizer](#) based on csstidy. If you want to create a linear or radial gradient as background or border, check our [CSS Gradient Generator](#).



Hey! You found this booklet interesting? Support Converting Colors with the new Membership Option!

The pro membership hides all ads, plus gives you double the colors in the color bucket, and more awesome pro features!

**[Learn more, Memberships starting at \\$2.50/m!](#)**

**Follow me  
on Twitter!**

@ConvertingColor