

# Converting Colors

Hex(AE8D8B)

Have a look what the booklet for  
Hex(AE8D8B) contains.

<b>Hex(AE8D8B)</b> .....	3
<i><b>Conversions</b></i> .....	4
<i><b>Details</b></i> .....	6
<i><b>Harmonies</b></i> .....	11
<i><b>Previews</b></i> .....	23
<i><b>Color Blindness Simulation</b></i> .....	26
<i><b>CSS Examples</b></i> .....	29

# Color

**Hex(AE8D8B)**

# Conversions

## Conversions Part 1

<b>Format</b>	<b>Color</b>
Hex	AE8D8B
RGB	174, 141, 139
RGB Percent	68%, 55%, 55%
CMY	0.3176, 0.4471, 0.4549
CMYK	0.00, 0.19, 0.20, 0.32
HSL	3°, 18%, 61%
HSV	3°, 20%, 68%
XYZ	31.6406, 29.9125, 28.5321
YIQ	150.6390, 20.3100, 6.3740

# Conversions

## Conversions Part 2

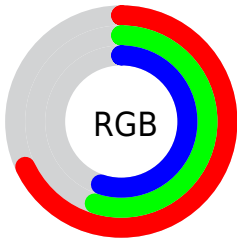
<b>Format</b>	<b>Color</b>
<b>RYB</b>	174, 141, 139
Decimal	11439499
CIELab	61.58, 12.14, 5.77
CIElCh	62, 13.440, 25.435
Yxy	29.9125, 0.3512, 0.3320
Android (android.graphics.Color)	4289629579 (0xFFAE8D8B)
YUV	150.6390, -5.7380, 20.4876
Hunter-Lab	54.6923, 7.5544, 7.3539

# Details

The Hex color **AE8D8B** is a dark color, and the websafe version is hex **CC9999**. A complement of this color would be **8BACAE**, and the grayscale version is **979797**.

A 20% lighter version of the original color is **E6C3C0**, and **795B59** is the 20% darker color. If you saturate the color by 10%, you get **AE7D7A**, and if you desaturate by 10%, it is **AE9D9C**.

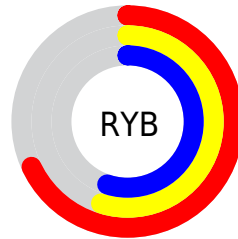
# Distribution



Red (68%)

Green (55%)

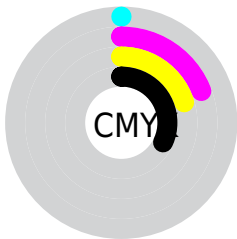
Blue (55%)



Red (68%)

Yellow (55%)

Blue (55%)

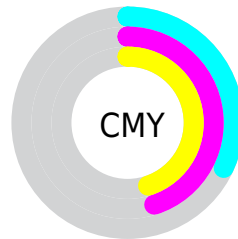


Cyan (0%)

Magenta (19%)

Yellow (20%)

Black (32%)



Cyan (32%)

Magenta (45%)

Yellow (45%)

# Brightness & Saturation Gradients

These gradients show how the Hex color AE8D8B changes by changing the brightness by 10 percent. The first figure shows a shift by +10% for each color and the second figure -10%.

Similar to the brightness gradients but the following saturation gradients show a change of the Hex color AE8D8B by changing the saturation by 10% instead.



 AE8D8B

 AE8D8B

FFFFFF

 937372

 E6C3C0

 795B59

 FFDFDC

 604342

 FFFBF9

 472D2C

 301817

 1D0000

 000000

 AE8D8B

 AE8D8B

 AE7D7A

 AE9D9C

 AE6C68

 AEAEAE

 AE5C57

 AEBEBF

 AE4B45

 AECFD1

 AE3B34

 AEDFE2

 AE2B23

 AEEFF3

 AE1A11

 AEFFFF

 AE0A00

# Harmonies

## Analogous

The Analogous color harmony consists of three colors that are next to each other on the color wheel.



AC8D97



AE8D8B



AA9082

# Triad

The Triadic color harmony groups three colors that are evenly spaced from another and form a triangle on the color wheel.



AE8D8B



869A87



8596AC

# Complementary

The Complementary color scheme is a pair of colors which are on the opposite of each other on the color wheel.



AE8D8B



8BACAE

# Split Complementary

Split-complementary colors differ from the complementary color scheme. The scheme consists of three colors, the original color and two neighbors of the complement color.



7A9AA8



AE8D8B



7B9C92

# Square

The Square scheme is like the rectangle color scheme, but the four colors are evenly spaced on the color wheel.



AE8D8B



93977F



769B9E



9592AA

# Rectangle

The Rectangle color scheme consists of four colors that form a rectangle on the color wheel.



AE8D8B



A4927E



769B9E



8198AB



# Sweetspot

The Sweet Spot groups the original color and five complimentary colors.



AE8D8B



E3D6D5



AE8BAC



736B6B



F2F2F2



737373



# Same Dimension

The Same Dimension uses a secret algorithm to generate beautiful new colors.



AE8D8B



E3B0AC



AE9E8B



574F4E



960900



170100



# Inverse Universe

The Inverse Universe completely reimagines the original color for something new.



8BACAE



ACE0E3



8B9BAE



4E5657



008E96

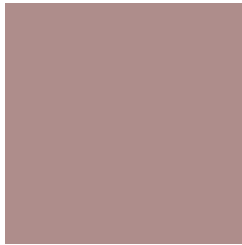


001617



# Previews

## White Background



This preview shows how the Hex color AE8D8B looks on a white background.

## Color Contrast Check

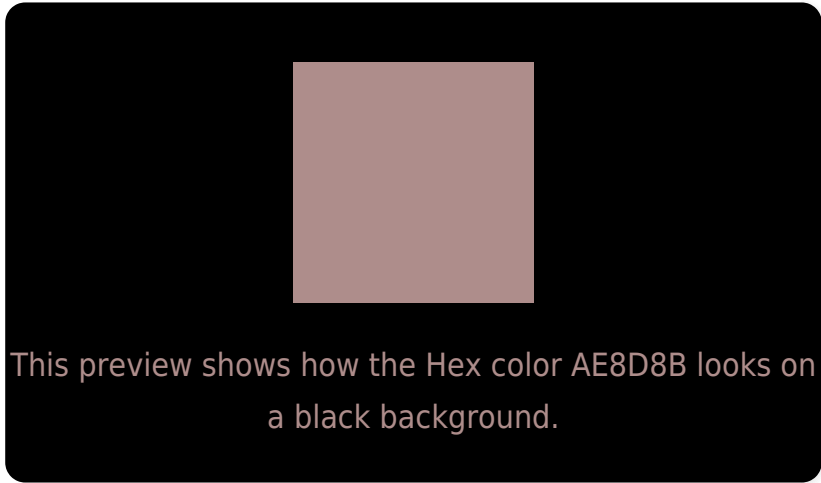
Large Text (above 18pt) WCAG AA ✓ Pass

Any Text WCAG AA ✗ Fail

Large Text (above 18pt) WCAG AAA ✗ Fail

Any Text WCAG AAA ✗ Fail

# Black Background



## Color Contrast Check

Large Text (above 18pt) WCAG AA ✓ Pass

Any Text WCAG AA ✓ Pass

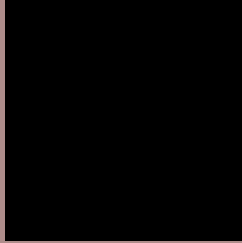
Large Text (above 18pt) WCAG AAA ✓ Pass

Any Text WCAG AAA × Fail

If you want to check with other color combinations, try the [Color Contrast Checker](#).



## Hex AE8D8B Background



This preview shows how black text looks on a background with the Hex color AE8D8B.



This preview shows how white text looks on a background with the Hex color AE8D8B.

# Color Blindness Simulation

Color vision deficiency is a very complex topic, and I could not describe the different causes any better than Wikipedia does, so if you want to learn more, you should check out their [article about color blindness](#).

## Dichromacy



**Original Color**  
AE8D8B

**Protanopia**  
99948F

**Deuteranopia**  
A7908A



**Tritanopia**  
AF8B96

# Trichromacy



**Original Color**  
AE8D8B

**Protanomaly**  
A1918E

**Deuteranomaly**  
AA8F8A

**Tritanomaly**  
AF8C92

# Monochromacy



**Original Color**  
AE8D8B

**Achromatopsia**  
979797

**Achromatomaly**  
9F9393

# CSS Examples

## Text

The CSS property to change the color of the text to Hex AE8D8B is called "color". The color property can be set on classes, ids or directly on the HTML element.

This example shows how text in the color #AE8D8B looks like.

```
.text, #text, p{  
    color:#AE8D8B  
}
```

If you want to add a text shadow in that color use the text-shadow property, you can generate a text shadow directly with our [CSS Text Shadow Generator](#).

Here you see how black text with a 4 pixel #AE8D8B colored shadow looks like.

```
.shadow{ text-shadow: 4px 4px 2px #AE8D8B
}
```

## Border

The CSS property to change the border of an element to Hex AE8D8B is called "border". The border property can be set on classes, ids or directly on the HTML element.

This example shows the color as border, it can be applied via the CSS property "border" or "border-color".

```
.border, #border, table{ border:4px solid
#AE8D8B }
```

If only the border color should be changed use the property `border-color`.

```
.border{ border-color:#AE8D8B }
```

If you want to add a box shadow in that color use:

Here you see how a box with a 4 pixel #AE8D8B colored shadow looks like.

```
.boxshadow{ -moz-box-shadow:4px 4px 4px  
4px #AE8D8B; -webkit-box-shadow:4px 4px  
4px 4px #AE8D8B; box-shadow:4px 4px 4px  
4px #AE8D8B }
```

# Background

The CSS property to change the background color of an element to Hex AE8D8B is called "background". The background property can be set on classes, ids or directly on the HTML element.

```
.background, #background, body{  
background:#AE8D8B }
```

If only the background color should be changed can be used:

```
.background{ background-color:#AE8D8B }
```

This example shows the color as background, it is applied via the CSS property "background".

To optimize and compress your CSS code, you can use our [online CSS compressor and optimizer](#) based on csstidy. If you want to create a linear or radial gradient as background or border, check our [CSS Gradient Generator](#).



Hey! You found this booklet interesting? Support Converting Colors with the new Membership Option!

The pro membership hides all ads, plus gives you double the colors in the color bucket, and more awesome pro features!

**[Learn more, Memberships starting at \\$2.50/m!](#)**

**Follow me  
on Twitter!**

@ConvertingColor