

# Converting Colors

Hex(AE928A)

Have a look what the booklet for  
Hex(AE928A) contains.

|                                                |    |
|------------------------------------------------|----|
| <b>Hex(AE928A)</b> .....                       | 3  |
| <i><b>Conversions</b></i> .....                | 4  |
| <i><b>Details</b></i> .....                    | 6  |
| <i><b>Harmonies</b></i> .....                  | 11 |
| <i><b>Previews</b></i> .....                   | 23 |
| <i><b>Color Blindness Simulation</b></i> ..... | 26 |
| <i><b>CSS Examples</b></i> .....               | 29 |

**Color**

**Hex(AE928A)**

# Conversions

## Conversions Part 1

| Format      | Color                     |
|-------------|---------------------------|
| Hex         | AE928A                    |
| RGB         | 174, 146, 138             |
| RGB Percent | 68%, 57%, 54%             |
| CMY         | 0.3176, 0.4275, 0.4588    |
| CMYK        | 0.00, 0.16, 0.21, 0.32    |
| HSL         | 13°, 18%, 61%             |
| HSV         | 13°, 21%, 68%             |
| XYZ         | 32.3219, 31.3914, 28.4004 |
| YIQ         | 153.4600, 19.2560, 3.4480 |

# Conversions

## Conversions Part 2

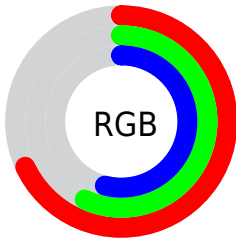
| <b>Format</b>                       | <b>Color</b>                  |
|-------------------------------------|-------------------------------|
| <b>RYB</b>                          | 174, 148, 138                 |
| Decimal                             | 11440778                      |
| CIELab                              | 62.84, 9.18, 8.14             |
| CIELCh                              | 63, 12.272, 41.546            |
| Yxy                                 | 31.3914, 0.3509,<br>0.3408    |
| Android<br>(android.graphics.Color) | 4289630858<br>(0xFFAE928A)    |
| YUV                                 | 153.4600, -7.6218,<br>18.0136 |
| Hunter-Lab                          | 56.0280, 4.9254,<br>9.1658    |

# Details

The Hex color **AE928A** is a light color, and the websafe version is hex **CC9999**. A complement of this color would be **8AA6AE**, and the grayscale version is **9A9A9A**.

A 20% lighter version of the original color is **E6C8BF**, and **795F58** is the 20% darker color. If you saturate the color by 10%, you get **AE8479**, and if you desaturate by 10%, it is **AEA09B**.

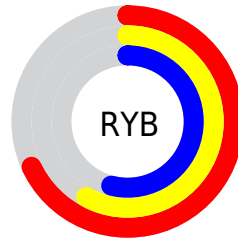
# Distribution



Red (68%)

Green (57%)

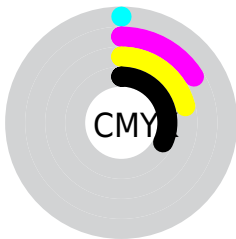
Blue (54%)



Red (68%)

Yellow (58%)

Blue (54%)

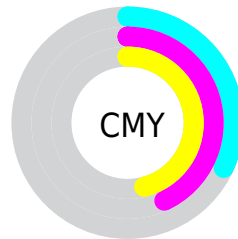


Cyan (0%)

Magenta (16%)

Yellow (21%)

Black (32%)



Cyan (32%)

Magenta (43%)

Yellow (46%)

# Brightness & Saturation Gradients

These gradients show how the Hex color AE928A changes by changing the brightness by 10 percent. The first figure shows a shift by +10% for each color and the second figure -10%.

Similar to the brightness gradients but the following saturation gradients show a change of the Hex color AE928A by changing the saturation by 10% instead.





AE928A



AE928A

FFFFFF



937871



E6C8BF



795F58



FFE4DB



604841



FFFFF8



48312B



301C16



1D0300



000000



AE928A



AE928A



AE8479



AEA09B

 AE7767

 AEADAD

 AE6956

 AEBBBE

 AE5C44

 AEC8D0

 AE4E33

 AED6E1

 AE4122

 AEE3F2

 AE3310

 AEF1FF

 AE2700

 AEFEFF

 AEFFFF

# Harmonies

## Analogous

The Analogous color harmony consists of three colors that are next to each other on the color wheel.



AF9194



AE928A



A79584

# Triad

The Triadic color harmony groups three colors that are evenly spaced from another and form a triangle on the color wheel.



AE928A



849E91



9298AD

# Complementary

The Complementary color scheme is a pair of colors which are on the opposite of each other on the color wheel.



AE928A



8AA6AE

# Split Complementary

Split-complementary colors differ from the complementary color scheme. The scheme consists of three colors, the original color and two neighbors of the complement color.



859BAC



AE928A



7D9F9C

# Square

The Square scheme is like the rectangle color scheme, but the four colors are evenly spaced on the color wheel.



AE928A



909C88



7D9DA6



9F94A8

# Rectangle

The Rectangle color scheme consists of four colors that form a rectangle on the color wheel.



AE928A



A09782



7D9DA6



8D99AE



# Sweetspot

The Sweet Spot groups the original color and five complimentary colors.



AE928A



E3D8D5



AE8AA6



736D6B



F2F2F2



737373



# Same Dimension

The Same Dimension uses a secret algorithm to generate beautiful new colors.



AE928A



E3B7AA



AEA48A



57504E



962100



170500



# Inverse Universe

The Inverse Universe completely reimagines the original color for something new.



8AA6AE



AAD6E3



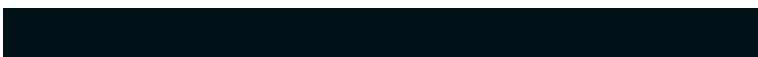
8A94AE



4E5557



007596

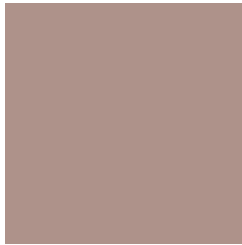


001217



# Previews

## White Background



This preview shows how the Hex color AE928A looks on a white background.

## Color Contrast Check

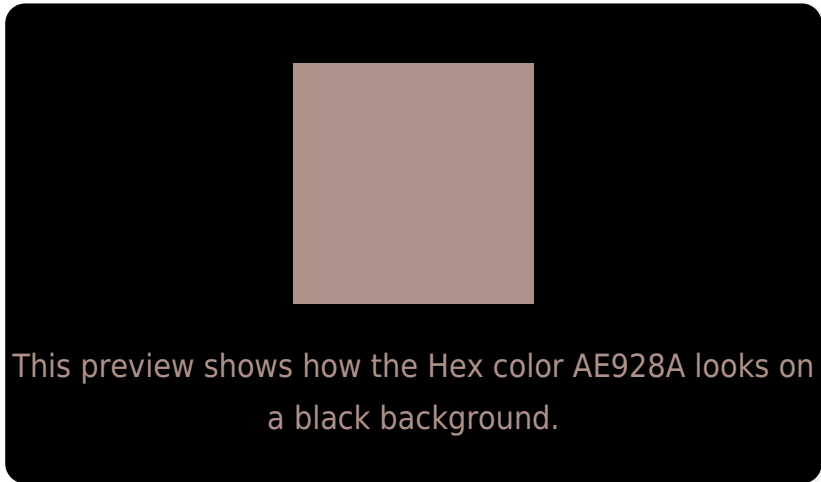
Large Text (above 18pt) WCAG AA × Fail

Any Text WCAG AA × Fail

Large Text (above 18pt) WCAG AAA × Fail

Any Text WCAG AAA × Fail

# Black Background



## Color Contrast Check

Large Text (above 18pt) WCAG AA ✓ Pass

Any Text WCAG AA ✓ Pass

Large Text (above 18pt) WCAG AAA ✓ Pass

Any Text WCAG AAA ✓ Pass

If you want to check with other color combinations, try the [Color Contrast Checker](#).



## Hex AE928A Background



This preview shows how black text looks on a background with the Hex color AE928A.



This preview shows how white text looks on a background with the Hex color AE928A.

# Color Blindness Simulation

Color vision deficiency is a very complex topic, and I could not describe the different causes any better than Wikipedia does, so if you want to learn more, you should check out their [article about color blindness](#).

## Dichromacy



**Original Color**  
AE928A

**Protanopia**  
9E988D

**Deuteranopia**  
AC938A



**Tritanopia**  
B08F9B

# Trichromacy



**Original Color**  
AE928A

**Protanomaly**  
A4968C

**Deuteranomaly**  
AD938A

**Tritanomaly**  
AF9095

# Monochromacy



**Original Color**  
AE928A

**Achromatopsia**  
999999

**Achromatomaly**  
A19694

# CSS Examples

## Text

The CSS property to change the color of the text to Hex AE928A is called "color". The color property can be set on classes, ids or directly on the HTML element.

This example shows how text in the color #AE928A looks like.

```
.text, #text, p{  
    color:#AE928A  
}
```

If you want to add a text shadow in that color use the text-shadow property, you can generate a text shadow directly with our [CSS Text Shadow Generator](#).

Here you see how black text with a 4 pixel #AE928A colored shadow looks like.

```
.shadow{ text-shadow: 4px 4px 2px #AE928A
}
```

## Border

The CSS property to change the border of an element to Hex AE928A is called "border". The border property can be set on classes, ids or directly on the HTML element.

This example shows the color as border, it can be applied via the CSS property "border" or "border-color".

```
.border, #border, table{ border:4px solid
#AE928A }
```

If only the border color should be changed use the property `border-color`.

```
.border{ border-color:#AE928A }
```

If you want to add a box shadow in that color use:

Here you see how a box with a 4 pixel #AE928A colored shadow looks like.

```
.boxshadow{ -moz-box-shadow:4px 4px 4px  
4px #AE928A; -webkit-box-shadow:4px 4px  
4px 4px #AE928A; box-shadow:4px 4px 4px  
4px #AE928A }
```

# Background

The CSS property to change the background color of an element to Hex AE928A is called "background". The background property can be set on classes, ids or directly on the HTML element.

```
.background, #background, body{  
background:#AE928A }
```

If only the background color should be changed can be used:

```
.background{ background-color:#AE928A }
```

This example shows the color as background, it is applied via the CSS property "background".

To optimize and compress your CSS code, you can use our [online CSS compressor and optimizer](#) based on csstidy. If you want to create a linear or radial gradient as background or border, check our [CSS Gradient Generator](#).



Hey! You found this booklet interesting? Support Converting Colors with the new Membership Option!

The pro membership hides all ads, plus gives you double the colors in the color bucket, and more awesome pro features!

**[Learn more, Memberships starting at \\$2.50/m!](#)**

**Follow me  
on Twitter!**

@ConvertingColor