

Converting Colors

Hex(AF6A63)

Have a look what the booklet for
Hex(AF6A63) contains.

Hex(AF6A63)	3
<i>Conversions</i>	4
<i>Details</i>	6
<i>Harmonies</i>	11
<i>Previews</i>	23
<i>Color Blindness Simulation</i>	26
<i>CSS Examples</i>	29

Color

Hex(AF6A63)

Conversions

Conversions Part 1

Format	Color
Hex	AF6A63
RGB	175, 106, 99
RGB Percent	69%, 42%, 39%
CMY	0.3137, 0.5843, 0.6118
CMYK	0.00, 0.39, 0.43, 0.31
HSL	6°, 32%, 54%
HSV	6°, 43%, 69%
XYZ	25.0854, 20.3229, 14.4049
YIQ	125.8330, 43.3710, 12.4510

Conversions

Conversions Part 2

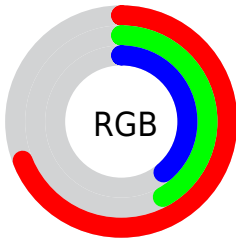
Format	Color
RYB	175, 107, 99
Decimal	11496035
CIELab	52.20, 26.76, 15.68
CIElCh	52, 31.011, 30.367
Yxy	20.3229, 0.4194, 0.3398
Android (android.graphics.Color)	4289686115 (0xFFAF6A63)
YUV	125.8330, -13.2287, 43.1195
Hunter-Lab	45.0809, 20.4351, 12.6114

Details

The Hex color **AF6A63** is a dark color, and the websafe version is hex **996666**. A complement of this color would be **63A8AF**, and the grayscale version is **7E7E7E**.

A 20% lighter version of the original color is **E99E96**, and **783934** is the 20% darker color. If you saturate the color by 10%, you get **AF5A52**, and if you desaturate by 10%, it is **AF7A75**.

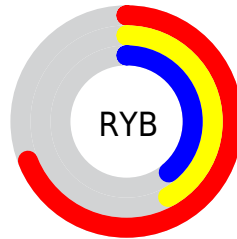
Distribution



Red (69%)

Green (42%)

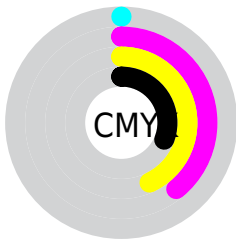
Blue (39%)



Red (69%)

Yellow (42%)

Blue (39%)

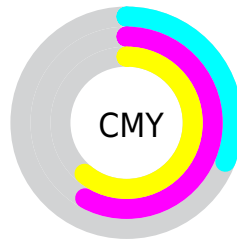


Cyan (0%)

Magenta (39%)

Yellow (43%)

Black (31%)



Cyan (31%)

Magenta (58%)

Yellow (61%)

Brightness & Saturation Gradients

These gradients show how the Hex color AF6A63 changes by changing the brightness by 10 percent. The first figure shows a shift by +10% for each color and the second figure -10%.

Similar to the brightness gradients but the following saturation gradients show a change of the Hex color AF6A63 by changing the saturation by 10% instead.

 AF6A63

 AF6A63

FFFFFF

 93514B

 E99E96

 783934

 FFB9B0

 5D221F

 FFD5CC

 430A08

 FFF2E8

 2C0000

 000000

 AF6A63

 AF6A63

 AF5A52

 AF7A75

 AF4A40

 AF8A86

 AF3A2F

 AF9A98

 AF2A1D

 AF9A98

AF9A98

 AF1B0C

 AFB9BB

AFB9BB

 AF1000

 AFC9CC

AFC9CC

 AFD9DD

AFD9DD

 AFE9EF

AFE9EF

 AFF9FF

AFF9FF

Harmonies

Analogous

The Analogous color harmony consists of three colors that are next to each other on the color wheel.



AE687D



AF6A63



A3724F

Triad

The Triadic color harmony groups three colors that are evenly spaced from another and form a triangle on the color wheel.



AF6A63



528861



567FB1

Complementary

The Complementary color scheme is a pair of colors which are on the opposite of each other on the color wheel.



AF6A63



63A8AF

Split Complementary

Split-complementary colors differ from the complementary color scheme. The scheme consists of three colors, the original color and two neighbors of the complement color.



2286AA



AF6A63



2C8B7C

Square

The Square scheme is like the rectangle color scheme, but the four colors are evenly spaced on the color wheel.



AF6A63



72834E



008A96



8075AA

Rectangle

The Rectangle color scheme consists of four colors that form a rectangle on the color wheel.



AF6A63



957848



008A96



4582B0

Sweetspot

The Sweet Spot groups the original color and five complimentary colors.



AF6A63



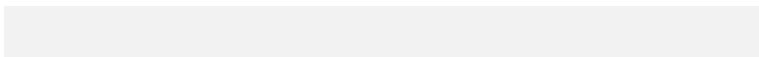
E3C8C5



AF63A9



736260



F2F2F2



737373

Same Dimension

The Same Dimension uses a secret algorithm to generate beautiful new colors.



AF6A63



E3786D



AF8F63



574F4E



960E00



170200

Inverse Universe

The Inverse Universe completely reimagines the original color for something new.



63A8AF



6DD8E3



6383AF



4E5657



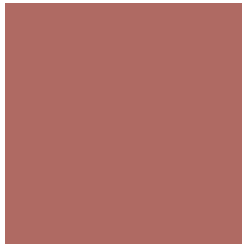
008996



001517

Previews

White Background



This preview shows how the Hex color AF6A63 looks on a white background.

Color Contrast Check

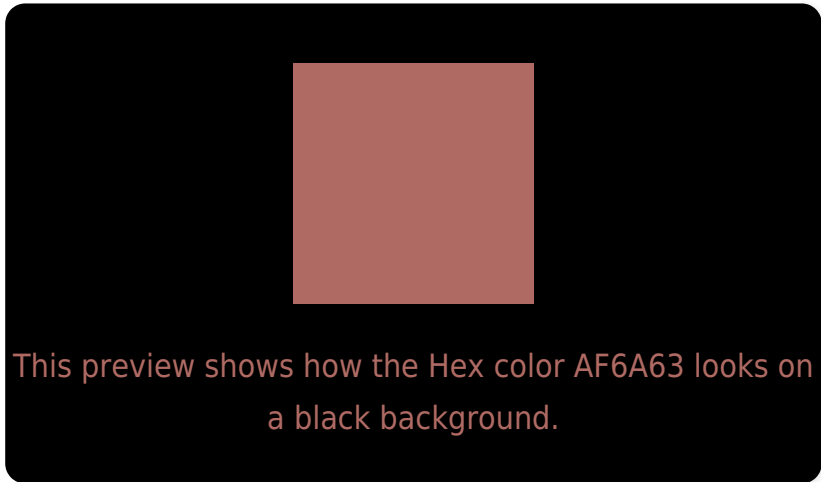
Large Text (above 18pt) WCAG AA ✓ Pass

Any Text WCAG AA × Fail

Large Text (above 18pt) WCAG AAA × Fail

Any Text WCAG AAA × Fail

Black Background



Color Contrast Check

Large Text (above 18pt) WCAG AA ✓ Pass

Any Text WCAG AA ✓ Pass

Large Text (above 18pt) WCAG AAA ✓ Pass

Any Text WCAG AAA × Fail

If you want to check with other color combinations, try the [Color Contrast Checker](#).

Hex AF6A63 Background



This preview shows how black text looks on a background with the Hex color AF6A63.



This preview shows how white text looks on a background with the Hex color AF6A63.

Color Blindness Simulation

Color vision deficiency is a very complex topic, and I could not describe the different causes any better than Wikipedia does, so if you want to learn more, you should check out their [article about color blindness](#).

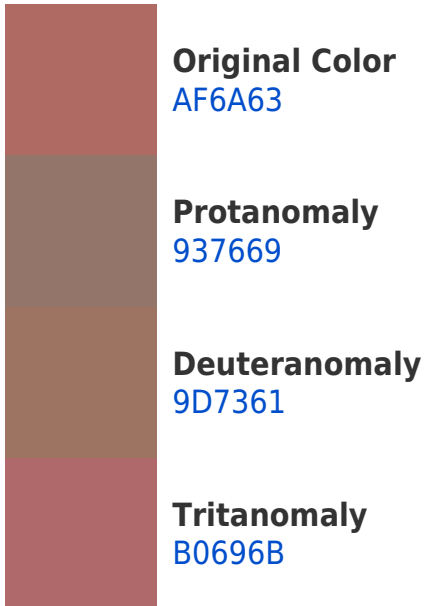
Dichromacy



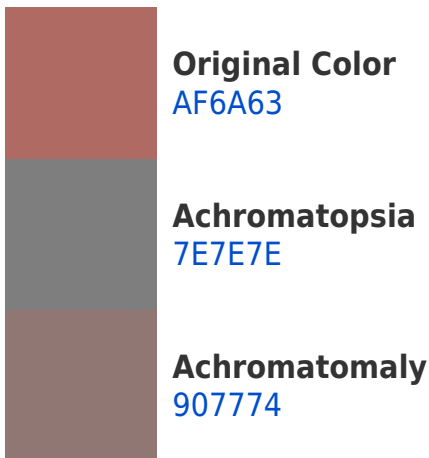


Tritanopia
B06870

Trichromacy



Monochromacy



CSS Examples

Text

The CSS property to change the color of the text to Hex AF6A63 is called "color". The color property can be set on classes, ids or directly on the HTML element.

This example shows how text in the color #AF6A63 looks like.

```
.text, #text, p{  
    color:#AF6A63  
}
```

If you want to add a text shadow in that color use the text-shadow property, you can generate a text shadow directly with our [CSS Text Shadow Generator](#).

Here you see how black text with a 4 pixel #AF6A63 colored shadow looks like.

```
.shadow{ text-shadow: 4px 4px 2px #AF6A63  
}
```

Border

The CSS property to change the border of an element to Hex AF6A63 is called "border". The border property can be set on classes, ids or directly on the HTML element.

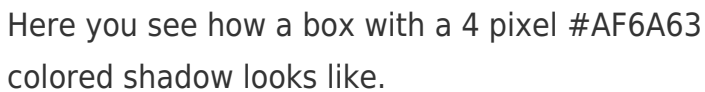
This example shows the color as border, it can be applied via the CSS property "border" or "border-color".

```
.border, #border, table{ border:4px solid  
#AF6A63 }
```

If only the border color should be changed use the property `border-color`.

```
.border{ border-color:#AF6A63 }
```

If you want to add a box shadow in that color use:



Here you see how a box with a 4 pixel `#AF6A63` colored shadow looks like.

```
.boxshadow{ -moz-box-shadow:4px 4px 4px  
4px #AF6A63; -webkit-box-shadow:4px 4px  
4px 4px #AF6A63; box-shadow:4px 4px 4px  
4px #AF6A63 }
```

Background

The CSS property to change the background color of an element to Hex AF6A63 is called "background". The background property can be set on classes, ids or directly on the HTML element.

```
.background, #background, body{  
background:#AF6A63 }
```

If only the background color should be changed can be used:

```
.background{ background-color:#AF6A63 }
```

This example shows the color as background, it is applied via the CSS property "background".

To optimize and compress your CSS code, you can use our [online CSS compressor and optimizer](#) based on csstidy. If you want to create a linear or radial gradient as background or border, check our [CSS Gradient Generator](#).

Hey! You found this booklet interesting? Support Converting Colors with the new Membership Option!

The pro membership hides all ads, plus gives you double the colors in the color bucket, and more awesome pro features!

[Learn more, Memberships starting at \\$2.50/m!](#)

**Follow me
on Twitter!**

@ConvertingColor