

Converting Colors

Hex(AF744E)

Have a look what the booklet for
Hex(AF744E) contains.

Hex(AF744E)	3
<i>Conversions</i>	4
<i>Details</i>	6
<i>Harmonies</i>	11
<i>Previews</i>	23
<i>Color Blindness Simulation</i>	26
<i>CSS Examples</i>	29

Color

Hex(AF744E)

Conversions

Conversions Part 1

Format	Color
Hex	AF744E
RGB	175, 116, 78
RGB Percent	69%, 45%, 31%
CMY	0.3137, 0.5451, 0.6941
CMYK	0.00, 0.34, 0.55, 0.31
HSL	24°, 38%, 50%
HSV	24°, 55%, 69%
XYZ	25.2997, 22.1548, 10.1506
YIQ	129.3090, 47.3620, 0.6900

Conversions

Conversions Part 2

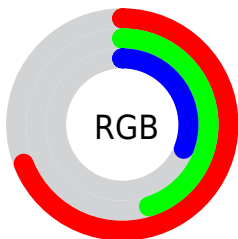
Format	Color
RYB	175, 140, 78
Decimal	11498574
CIELab	54.19, 19.09, 30.33
CIElCh	54, 35.839, 57.819
Yxy	22.1548, 0.4392, 0.3846
Android (android.graphics.Color)	4289688654 (0xFFAF744E)
YUV	129.3090, -25.2953, 40.0710
Hunter-Lab	47.0689, 13.5740, 20.1621

Details

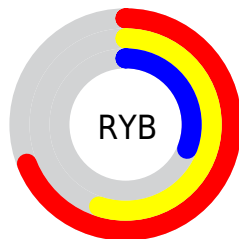
The Hex color **AF744E** is a dark color, and the websafe version is hex **996633**. A complement of this color would be **4E89AF**, and the grayscale version is **828282**.

A 20% lighter version of the original color is **E9A880**, and **774320** is the 20% darker color. If you saturate the color by 10%, you get **AF693C**, and if you desaturate by 10%, it is **AF7F60**.

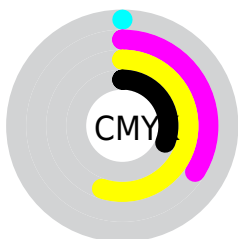
Distribution



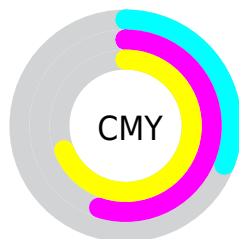
- Red (69%)
- Green (45%)
- Blue (31%)



- Red (69%)
- Yellow (55%)
- Blue (31%)



- Cyan (0%)
- Magenta (34%)
- Yellow (55%)
- Black (31%)



- Cyan (31%)
- Magenta (55%)
- Yellow (69%)

Brightness & Saturation Gradients

These gradients show how the Hex color AF744E changes by changing the brightness by 10 percent. The first figure shows a shift by +10% for each color and the second figure -10%.

Similar to the brightness gradients but the following saturation gradients show a change of the Hex color AF744E by changing the saturation by 10% instead.

 AF744E

 AF744E

FFFFFF

 935B37

 E9A880

 774320

 FFC49A

 5C2D0A

 FFE0B5

 421700

 FFFCD1

 290000

 FFFFED

 000000

 AF744E

 AF744E

 AF693C

 AF7F60

 AF5F2B

 AF8971

 AF5419

 AF9483

 AF4908

 AF9F94

 AF4500

 AFA9A6

 AFB4B7

 AFBFC9

 AFC9DA

 AFD4EB

Harmonies

Analogous

The Analogous color harmony consists of three colors that are next to each other on the color wheel.



BC6B66



AF744E



977F43

Triad

The Triadic color harmony groups three colors that are evenly spaced from another and form a triangle on the color wheel.



AF744E



1B927E



817AB8

Complementary

The Complementary color scheme is a pair of colors which are on the opposite of each other on the color wheel.



AF744E



4E89AF

Split Complementary

Split-complementary colors differ from the complementary color scheme. The scheme consists of three colors, the original color and two neighbors of the complement color.



4B85BF



AF744E



00919D

Square

The Square scheme is like the rectangle color scheme, but the four colors are evenly spaced on the color wheel.



AF744E



528F60



008DB5



A66FA3

Rectangle

The Rectangle color scheme consists of four colors that form a rectangle on the color wheel.



AF744E



838645



008DB5



717EBC

Sweetspot

The Sweet Spot groups the original color and five complimentary colors.



AF744E



E3CBBC



AF4E8A



73655C



F2F2F2



737373

Same Dimension

The Same Dimension uses a secret algorithm to generate beautiful new colors.



AF744E



E3864B



AFA44E



57514E



963B00



170900

Inverse Universe

The Inverse Universe completely reimagines the original color for something new.



4E89AF



4BA7E3



4E59AF



4E5357



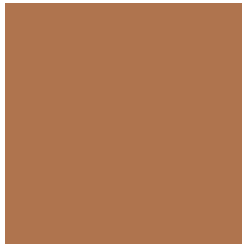
005C96



000E17

Previews

White Background



This preview shows how the Hex color AF744E looks on a white background.

Color Contrast Check

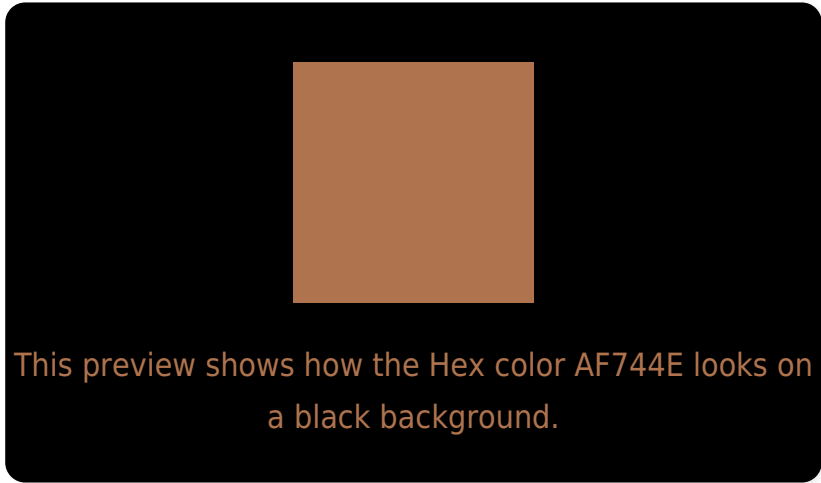
Large Text (above 18pt) WCAG AA ✓ Pass

Any Text WCAG AA × Fail

Large Text (above 18pt) WCAG AAA × Fail

Any Text WCAG AAA × Fail

Black Background



Color Contrast Check

Large Text (above 18pt) WCAG AA ✓ Pass

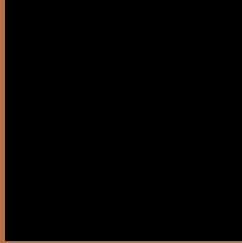
Any Text WCAG AA ✓ Pass

Large Text (above 18pt) WCAG AAA ✓ Pass

Any Text WCAG AAA × Fail

If you want to check with other color combinations, try the [Color Contrast Checker](#).

Hex AF744E Background



This preview shows how black text looks on a background with the Hex color AF744E.



This preview shows how white text looks on a background with the Hex color AF744E.

Color Blindness Simulation

Color vision deficiency is a very complex topic, and I could not describe the different causes any better than Wikipedia does, so if you want to learn more, you should check out their [article about color blindness](#).

Dichromacy



Original Color
AF744E

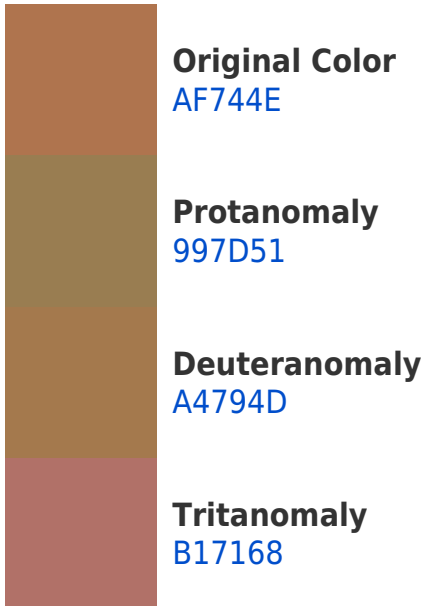
Protanopia
8D8253

Deuteranopia
9E7C4C



Tritanopia
B26F77

Trichromacy



Monochromacy



CSS Examples

Text

The CSS property to change the color of the text to Hex AF744E is called "color". The color property can be set on classes, ids or directly on the HTML element.

This example shows how text in the color #AF744E looks like.

```
.text, #text, p{
  color:#AF744E
}
```

If you want to add a text shadow in that color use the text-shadow property, you can generate a text shadow directly with our [CSS Text Shadow Generator](#).

Here you see how black text with a 4 pixel #AF744E colored shadow looks like.

```
.shadow{ text-shadow: 4px 4px 2px #AF744E
}
```

Border

The CSS property to change the border of an element to Hex AF744E is called "border". The border property can be set on classes, ids or directly on the HTML element.

This example shows the color as border, it can be applied via the CSS property "border" or "border-color".

```
.border, #border, table{ border:4px solid
#AF744E }
```

If only the border color should be changed use the property `border-color`.

```
.border{ border-color:#AF744E }
```

If you want to add a box shadow in that color use:

Here you see how a box with a 4 pixel #AF744E colored shadow looks like.

```
.boxshadow{ -moz-box-shadow:4px 4px 4px  
4px #AF744E; -webkit-box-shadow:4px 4px  
4px 4px #AF744E; box-shadow:4px 4px 4px  
4px #AF744E }
```

Background

The CSS property to change the background color of an element to Hex AF744E is called "background". The background property can be set on classes, ids or directly on the HTML element.

```
.background, #background, body{  
background:#AF744E }
```

If only the background color should be changed can be used:

```
.background{ background-color:#AF744E }
```

This example shows the color as background, it is applied via the CSS property "background".

To optimize and compress your CSS code, you can use our [online CSS compressor and optimizer](#) based on csstidy. If you want to create a linear or radial gradient as background or border, check our [CSS Gradient Generator](#).

Hey! You found this booklet interesting? Support Converting Colors with the new Membership Option!

The pro membership hides all ads, plus gives you double the colors in the color bucket, and more awesome pro features!

[Learn more, Memberships starting at \\$2.50/m!](#)

**Follow me
on Twitter!**

@ConvertingColor