

Converting Colors

Hex(AF7C48)

Have a look what the booklet for
Hex(AF7C48) contains.

Hex(AF7C48)	3
<i>Conversions</i>	4
<i>Details</i>	6
<i>Harmonies</i>	11
<i>Previews</i>	23
<i>Color Blindness Simulation</i>	26
<i>CSS Examples</i>	29

Color

Hex(AF7C48)

Conversions

Conversions Part 1

Format	Color
Hex	AF7C48
RGB	175, 124, 72
RGB Percent	69%, 49%, 28%
CMY	0.3137, 0.5137, 0.7176
CMYK	0.00, 0.29, 0.59, 0.31
HSL	30°, 42%, 48%
HSV	30°, 59%, 69%
XYZ	26.0565, 23.9971, 9.3895
YIQ	133.3210, 47.0880, -5.3600

Conversions

Conversions Part 2

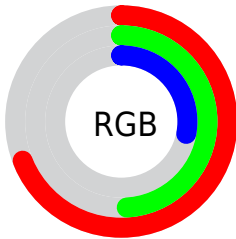
Format	Color
RYB	173, 175, 72
Decimal	11500616
CIELab	56.08, 14.10, 35.92
CIELCh	56, 38.592, 68.571
Yxy	23.9971, 0.4383, 0.4037
Android (android.graphics.Color)	4289690696 (0xFFAF7C48)
YUV	133.3210, -30.2313, 36.5525
Hunter-Lab	48.9869, 9.2187, 22.9265

Details

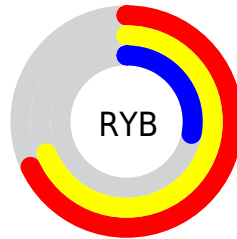
The Hex color **AF7C48** is a dark color, and the websafe version is hex **996633**. A complement of this color would be **487BAF**, and the grayscale version is **868686**.

A 20% lighter version of the original color is **E9B17A**, and **774B19** is the 20% darker color. If you saturate the color by 10%, you get **AF7336**, and if you desaturate by 10%, it is **AF8559**.

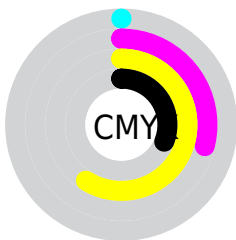
Distribution



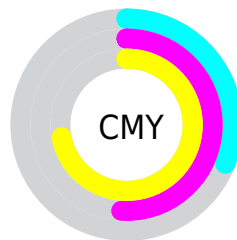
- Red (69%)
- Green (49%)
- Blue (28%)



- Red (68%)
- Yellow (69%)
- Blue (28%)



- Cyan (0%)
- Magenta (29%)
- Yellow (59%)
- Black (31%)



- Cyan (31%)
- Magenta (51%)
- Yellow (72%)

Brightness & Saturation Gradients

These gradients show how the Hex color AF7C48 changes by changing the brightness by 10 percent. The first figure shows a shift by +10% for each color and the second figure -10%.

Similar to the brightness gradients but the following saturation gradients show a change of the Hex color AF7C48 by changing the saturation by 10% instead.

 AF7C48

 AF7C48

FFFFFF

 936330

 E9B17A

 774B19

 FFCC94

 5C3400

 FFE8AF

 421F00

 FFFFCE

 290A00

 FFFFEE

 000000

 AF7C48

 AF7C48

 AF7336

 AF8559

 AF6B25

 AF8D6B

 AF6214

 AF967D

 AF5902

 AF9F8E

 AF5800

 AFA7A0

 AFB0B1

 AFB9C3

 AFC1D4

 AFCAE6

Harmonies

Analogous

The Analogous color harmony consists of three colors that are next to each other on the color wheel.



C2715E



AF7C48



928842

Triad

The Triadic color harmony groups three colors that are evenly spaced from another and form a triangle on the color wheel.



AF7C48



00988F



967ABB

Complementary

The Complementary color scheme is a pair of colors which are on the opposite of each other on the color wheel.



AF7C48



487BAF

Split Complementary

Split-complementary colors differ from the complementary color scheme. The scheme consists of three colors, the original color and two neighbors of the complement color.



6287C9



AF7C48



0096AF

Square

The Square scheme is like the rectangle color scheme, but the four colors are evenly spaced on the color wheel.



AF7C48



40966D



0091C4



B86FA0

Rectangle

The Rectangle color scheme consists of four colors that form a rectangle on the color wheel.



AF7C48



7A8E4A



0091C4



877EC1

Sweetspot

The Sweet Spot groups the original color and five complimentary colors.



AF7C48



E3CFBA



AF487C



73665A



F2F2F2



737373

Same Dimension

The Same Dimension uses a secret algorithm to generate beautiful new colors.



AF7C48



E39342



AFAF48



57524E



964C00



170C00

Inverse Universe

The Inverse Universe completely reimagines the original color for something new.



487BAF



4292E3



4848AF



4E5257



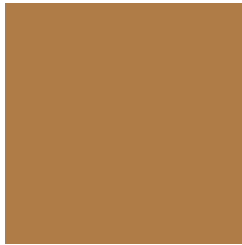
004A96



000B17

Previews

White Background



This preview shows how the Hex color AF7C48 looks on a white background.

Color Contrast Check

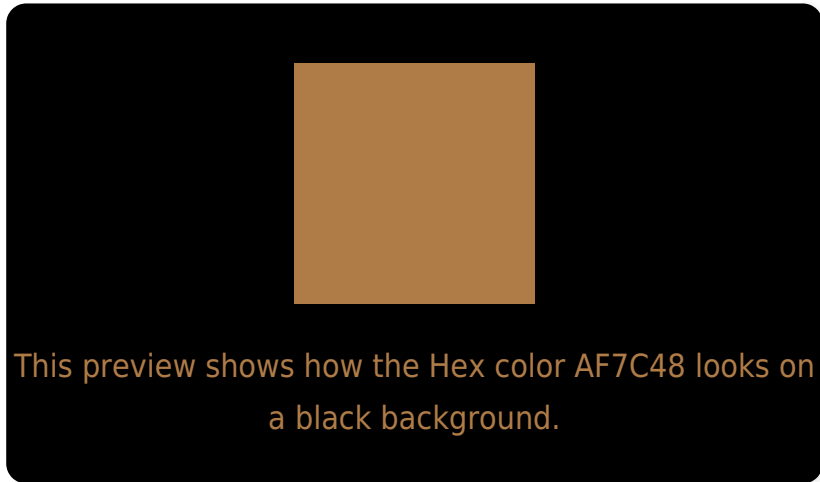
Large Text (above 18pt) WCAG AA ✓ Pass

Any Text WCAG AA × Fail

Large Text (above 18pt) WCAG AAA × Fail

Any Text WCAG AAA × Fail

Black Background



Color Contrast Check

Large Text (above 18pt) WCAG AA ✓ Pass

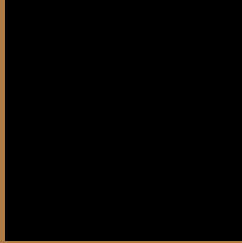
Any Text WCAG AA ✓ Pass

Large Text (above 18pt) WCAG AAA ✓ Pass

Any Text WCAG AAA × Fail

If you want to check with other color combinations, try the [Color Contrast Checker](#).

Hex AF7C48 Background



This preview shows how black text looks on a background with the Hex color AF7C48.

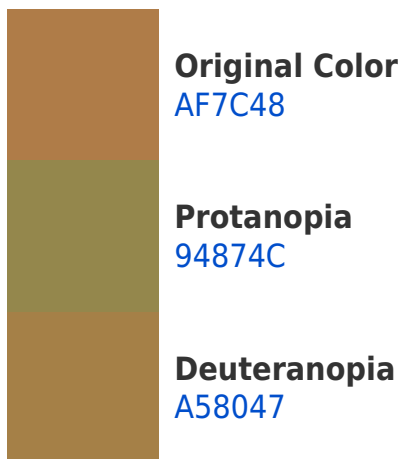


This preview shows how white text looks on a background with the Hex color AF7C48.

Color Blindness Simulation

Color vision deficiency is a very complex topic, and I could not describe the different causes any better than Wikipedia does, so if you want to learn more, you should check out their [article about color blindness](#).

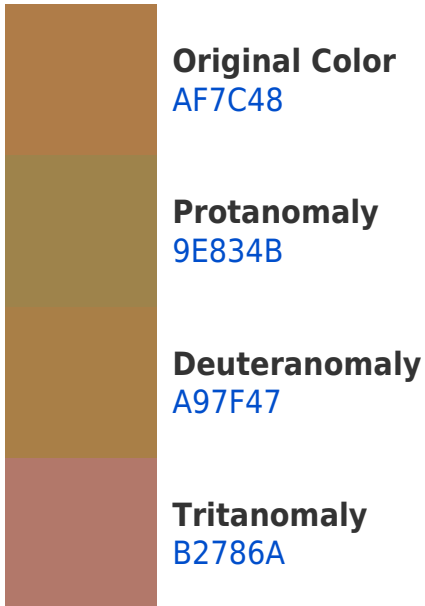
Dichromacy



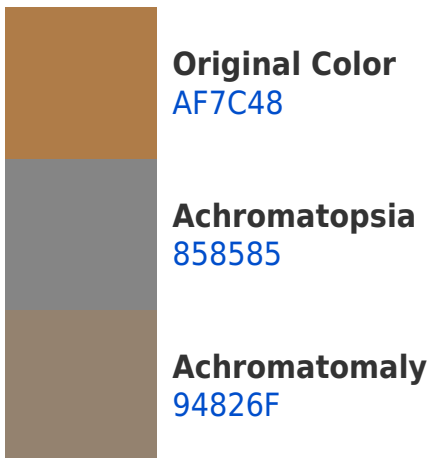


Tritanopia
B3767E

Trichromacy



Monochromacy



CSS Examples

Text

The CSS property to change the color of the text to Hex AF7C48 is called "color". The color property can be set on classes, ids or directly on the HTML element.

This example shows how text in the color #AF7C48 looks like.

```
.text, #text, p{  
    color:#AF7C48  
}
```

If you want to add a text shadow in that color use the text-shadow property, you can generate a text shadow directly with our [CSS Text Shadow Generator](#).

Here you see how black text with a 4 pixel #AF7C48 colored shadow looks like.

```
.shadow{ text-shadow: 4px 4px 2px #AF7C48
}
```

Border

The CSS property to change the border of an element to Hex AF7C48 is called "border". The border property can be set on classes, ids or directly on the HTML element.

This example shows the color as border, it can be applied via the CSS property "border" or "border-color".

```
.border, #border, table{ border:4px solid
#AF7C48 }
```

If only the border color should be changed use the property `border-color`.

```
.border{ border-color:#AF7C48 }
```

If you want to add a box shadow in that color use:

Here you see how a box with a 4 pixel #AF7C48 colored shadow looks like.

```
.boxshadow{ -moz-box-shadow:4px 4px 4px  
4px #AF7C48; -webkit-box-shadow:4px 4px  
4px 4px #AF7C48; box-shadow:4px 4px 4px  
4px #AF7C48 }
```

Background

The CSS property to change the background color of an element to Hex AF7C48 is called "background". The background property can be set on classes, ids or directly on the HTML element.

```
.background, #background, body{  
background:#AF7C48 }
```

If only the background color should be changed can be used:

```
.background{ background-color:#AF7C48 }
```

This example shows the color as background, it is applied via the CSS property "background".

To optimize and compress your CSS code, you can use our [online CSS compressor and optimizer](#) based on csstidy. If you want to create a linear or radial gradient as background or border, check our [CSS Gradient Generator](#).

Hey! You found this booklet interesting? Support Converting Colors with the new Membership Option!

The pro membership hides all ads, plus gives you double the colors in the color bucket, and more awesome pro features!

[Learn more, Memberships starting at \\$2.50/m!](#)

**Follow me
on Twitter!**

@ConvertingColor