

Converting Colors

Hex(AF885F)

Have a look what the booklet for
Hex(AF885F) contains.

Hex(AF885F)	3
<i>Conversions</i>	4
<i>Details</i>	6
<i>Harmonies</i>	11
<i>Previews</i>	23
<i>Color Blindness Simulation</i>	26
<i>CSS Examples</i>	29

Color

Hex(AF885F)

Conversions

Conversions Part 1

Format	Color
Hex	AF885F
RGB	175, 136, 95
RGB Percent	69%, 53%, 37%
CMY	0.3137, 0.4667, 0.6275
CMYK	0.00, 0.22, 0.46, 0.31
HSL	31°, 33%, 53%
HSV	31°, 46%, 69%
XYZ	28.5489, 27.5485, 14.6392
YIQ	142.9870, 36.4050, -4.4830

Conversions

Conversions Part 2

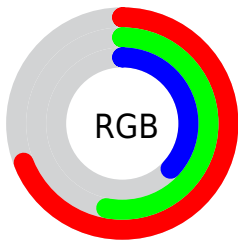
Format	Color
RYB	171, 175, 95
Decimal	11503711
CIELab	59.48, 9.51, 27.68
CIELCh	59, 29.266, 71.030
Yxy	27.5485, 0.4036, 0.3895
Android (android.graphics.Color)	4289693791 (0xFFAF885F)
YUV	142.9870, -23.6576, 28.0754
Hunter-Lab	52.4867, 5.2393, 20.2040

Details

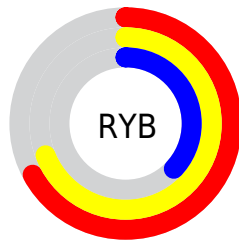
The Hex color **AF885F** is a dark color, and the websafe version is hex **CC9966**. A complement of this color would be **5F86AF**, and the grayscale version is **8F8F8F**.

A 20% lighter version of the original color is **E8BD92**, and **785630** is the 20% darker color. If you saturate the color by 10%, you get **AF7F4E**, and if you desaturate by 10%, it is **AF9171**.

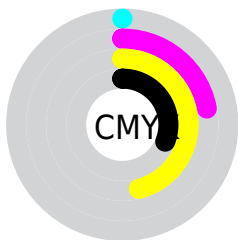
Distribution



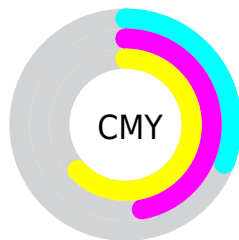
- Red (69%)
- Green (53%)
- Blue (37%)



- Red (67%)
- Yellow (69%)
- Blue (37%)



- Cyan (0%)
- Magenta (22%)
- Yellow (46%)
- Black (31%)



- Cyan (31%)
- Magenta (47%)
- Yellow (63%)

Brightness & Saturation Gradients

These gradients show how the Hex color AF885F changes by changing the brightness by 10 percent. The first figure shows a shift by +10% for each color and the second figure -10%.

Similar to the brightness gradients but the following saturation gradients show a change of the Hex color AF885F by changing the saturation by 10% instead.



AF885F



AF885F

FFFFFF



936F47



E8BD92



785630



FFD9AD



5E3F1A



FFF6C8



452901



FFFFE4



2C1500



110000



000000



AF885F



AF885F



AF7F4E



AF9171

 AF773C

 AF9982

 AF6E2A

 AFA294

 AF6619

 AFAAA5

 AF5D07

 AFB3B7

 AF5A00

 AFBBC8

 AFC4DA

 AFCCEB

 AFD5FD

Harmonies

Analogous

The Analogous color harmony consists of three colors that are next to each other on the color wheel.



BE806F



AF885F



97915C

Triad

The Triadic color harmony groups three colors that are evenly spaced from another and form a triangle on the color wheel.



AF885F



3F9D98



9F85B6

Complementary

The Complementary color scheme is a pair of colors which are on the opposite of each other on the color wheel.



AF885F



5F86AF

Split Complementary

Split-complementary colors differ from the complementary color scheme. The scheme consists of three colors, the original color and two neighbors of the complement color.



7B8EC1



AF885F



379BB0

Square

The Square scheme is like the rectangle color scheme, but the four colors are evenly spaced on the color wheel.



AF885F



5C9C7E



5396BF



B77EA1

Rectangle

The Rectangle color scheme consists of four colors that form a rectangle on the color wheel.



AF885F



859662



5396BF



9488BB

Sweetspot

The Sweet Spot groups the original color and five complimentary colors.



AF885F



E3D3C3



AF5F87



73695F



F2F2F2



737373

Same Dimension

The Same Dimension uses a secret algorithm to generate beautiful new colors.



AF885F



E3A666



AFAF5F



57524E



964D00



170C00

Inverse Universe

The Inverse Universe completely reimagines the original color for something new.



5F86AF



66A3E3



5F5FAF



4E5257



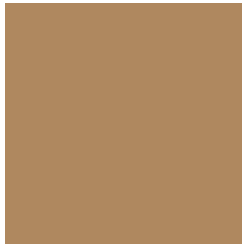
004996



000B17

Previews

White Background



This preview shows how the Hex color AF885F looks on a white background.

Color Contrast Check

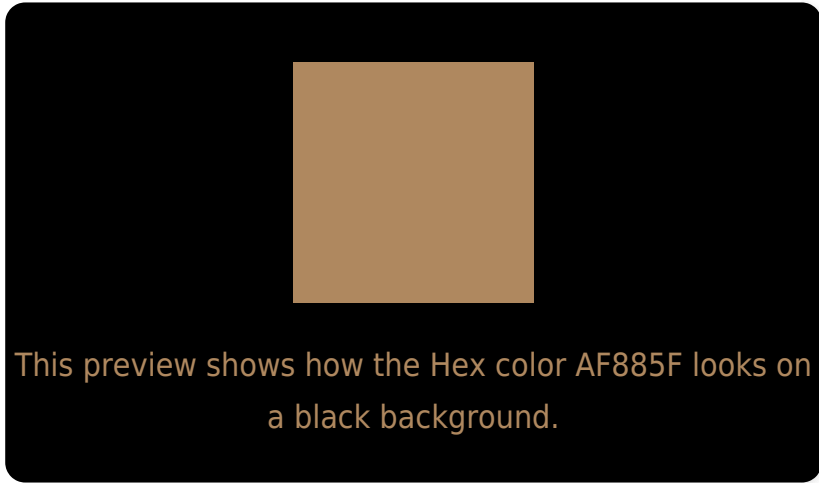
Large Text (above 18pt) WCAG AA ✓ Pass

Any Text WCAG AA × Fail

Large Text (above 18pt) WCAG AAA × Fail

Any Text WCAG AAA × Fail

Black Background



Color Contrast Check

Large Text (above 18pt) WCAG AA ✓ Pass

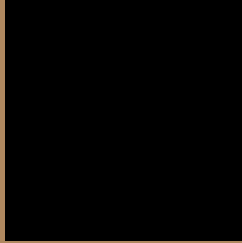
Any Text WCAG AA ✓ Pass

Large Text (above 18pt) WCAG AAA ✓ Pass

Any Text WCAG AAA × Fail

If you want to check with other color combinations, try the [Color Contrast Checker](#).

Hex AF885F Background



This preview shows how black text looks on a background with the Hex color AF885F.



This preview shows how white text looks on a background with the Hex color AF885F.

Color Blindness Simulation

Color vision deficiency is a very complex topic, and I could not describe the different causes any better than Wikipedia does, so if you want to learn more, you should check out their [article about color blindness](#).


Dichromacy



Original Color
AF885F

Protanopia
9B8F62

Deuteranopia
AC895F



Tritanopia
B3828C

Trichromacy



Monochromacy



CSS Examples

Text

The CSS property to change the color of the text to Hex AF885F is called "color". The color property can be set on classes, ids or directly on the HTML element.

This example shows how text in the color #AF885F looks like.

```
.text, #text, p{  
    color:#AF885F  
}
```

If you want to add a text shadow in that color use the text-shadow property, you can generate a text shadow directly with our [CSS Text Shadow Generator](#).

Here you see how black text with a 4 pixel #AF885F colored shadow looks like.

```
.shadow{ text-shadow: 4px 4px 2px #AF885F
}
```

Border

The CSS property to change the border of an element to Hex AF885F is called "border". The border property can be set on classes, ids or directly on the HTML element.

This example shows the color as border, it can be applied via the CSS property "border" or "border-color".

```
.border, #border, table{ border:4px solid
#AF885F }
```

If only the border color should be changed use the property border-color.

```
.border{ border-color:#AF885F }
```

If you want to add a box shadow in that color use:

Here you see how a box with a 4 pixel #AF885F colored shadow looks like.

```
.boxshadow{ -moz-box-shadow:4px 4px 4px  
4px #AF885F; -webkit-box-shadow:4px 4px  
4px 4px #AF885F; box-shadow:4px 4px 4px  
4px #AF885F }
```

Background

The CSS property to change the background color of an element to Hex AF885F is called "background". The background property can be set on classes, ids or directly on the HTML element.

```
.background, #background, body{  
background:#AF885F }
```

If only the background color should be changed can be used:

```
.background{ background-color:#AF885F }
```

This example shows the color as background, it is applied via the CSS property "background".

To optimize and compress your CSS code, you can use our [online CSS compressor and optimizer](#) based on csstidy. If you want to create a linear or radial gradient as background or border, check our [CSS Gradient Generator](#).

Hey! You found this booklet interesting? Support Converting Colors with the new Membership Option!

The pro membership hides all ads, plus gives you double the colors in the color bucket, and more awesome pro features!

[Learn more, Memberships starting at \\$2.50/m!](#)

**Follow me
on Twitter!**

@ConvertingColor