

Converting Colors

Hex(AF8C5F)

Have a look what the booklet for
Hex(AF8C5F) contains.

Hex(AF8C5F)	3
<i>Conversions</i>	4
<i>Details</i>	6
<i>Harmonies</i>	11
<i>Previews</i>	23
<i>Color Blindness Simulation</i>	26
<i>CSS Examples</i>	29

Color

Hex(AF8C5F)

Conversions

Conversions Part 1

Format	Color
Hex	AF8C5F
RGB	175, 140, 95
RGB Percent	69%, 55%, 37%
CMY	0.3137, 0.4510, 0.6275
CMYK	0.00, 0.20, 0.46, 0.31
HSL	34°, 33%, 53%
HSV	34°, 46%, 69%
XYZ	29.1228, 28.6964, 14.8305
YIQ	145.3350, 35.3050, -6.5750

Conversions

Conversions Part 2

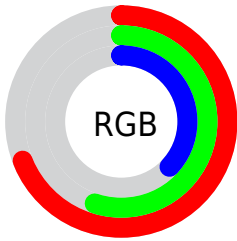
Format	Color
RYB	157, 175, 95
Decimal	11504735
CIELab	60.51, 7.29, 29.02
CIELCh	61, 29.916, 75.905
Yxy	28.6964, 0.4009, 0.3950
Android (android.graphics.Color)	4289694815 (0xFFAF8C5F)
YUV	145.3350, -24.8152, 26.0162
Hunter-Lab	53.5690, 3.2960, 21.0839

Details

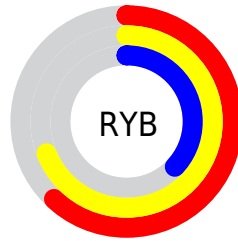
The Hex color **AF8C5F** is a dark color, and the websafe version is hex **CC9966**. A complement of this color would be **5F82AF**, and the grayscale version is **929292**.

A 20% lighter version of the original color is **E8C192**, and **795A30** is the 20% darker color. If you saturate the color by 10%, you get **AF844E**, and if you desaturate by 10%, it is **AF9471**.

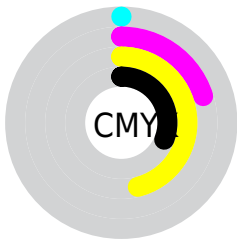
Distribution



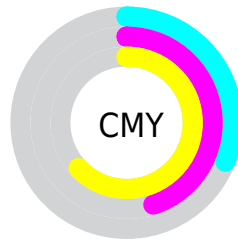
- Red (69%)
- Green (55%)
- Blue (37%)



- Red (62%)
- Yellow (69%)
- Blue (37%)



- Cyan (0%)
- Magenta (20%)
- Yellow (46%)
- Black (31%)



- Cyan (31%)
- Magenta (45%)
- Yellow (63%)

Brightness & Saturation Gradients

These gradients show how the Hex color AF8C5F changes by changing the brightness by 10 percent. The first figure shows a shift by +10% for each color and the second figure -10%.

Similar to the brightness gradients but the following saturation gradients show a change of the Hex color AF8C5F by changing the saturation by 10% instead.

 AF8C5F

 AF8C5F

FFFFFF

 937347

 E8C192

 795A30

 FFDDAD

 5E4319

 FFFAC8

 452D01

 FFFFE5

 2D1800

 130000

 000000

 AF8C5F

 AF8C5F

 AF844E

 AF9471

 AF7D3C

 AF9B82

 AF752A

 AFA394

 AF6D19

 AFABA5

 AF6607

 AFB2B7

 AF6200

 AFBAC8

 AFC2DA

 AFC9EB

 AFD1FD

Harmonies

Analogous

The Analogous color harmony consists of three colors that are next to each other on the color wheel.



C0836D



AF8C5F



96955F

Triad

The Triadic color harmony groups three colors that are evenly spaced from another and form a triangle on the color wheel.



AF8C5F



3BA09F



A786B7

Complementary

The Complementary color scheme is a pair of colors which are on the opposite of each other on the color wheel.



AF8C5F



5F82AF

Split Complementary

Split-complementary colors differ from the complementary color scheme. The scheme consists of three colors, the original color and two neighbors of the complement color.



8390C4



AF8C5F



399EB7

Square

The Square scheme is like the rectangle color scheme, but the four colors are evenly spaced on the color wheel.



AF8C5F



589F84



5A98C5



BE7F9F

Rectangle

The Rectangle color scheme consists of four colors that form a rectangle on the color wheel.



AF8C5F



829A66



5A98C5



9C89BD

Sweetspot

The Sweet Spot groups the original color and five complimentary colors.



AF8C5F



E3D5C3



AF5F83



736A5F



F2F2F2



737373

Same Dimension

The Same Dimension uses a secret algorithm to generate beautiful new colors.



AF8C5F



E3AC66



ABAF5F



57534E



965500



170D00

Inverse Universe

The Inverse Universe completely reimagines the original color for something new.



5F82AF



669DE3



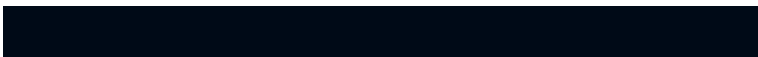
635FAF



4E5257



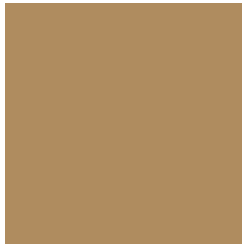
004296



000A17

Previews

White Background



This preview shows how the Hex color AF8C5F looks on a white background.

Color Contrast Check

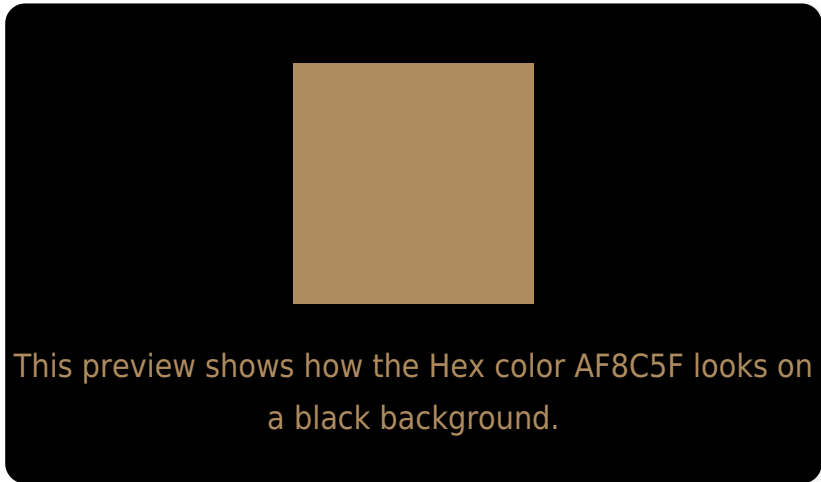
Large Text (above 18pt) WCAG AA ✓ Pass

Any Text WCAG AA × Fail

Large Text (above 18pt) WCAG AAA × Fail

Any Text WCAG AAA × Fail

Black Background



Color Contrast Check

Large Text (above 18pt) WCAG AA ✓ Pass

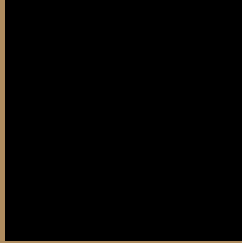
Any Text WCAG AA ✓ Pass

Large Text (above 18pt) WCAG AAA ✓ Pass

Any Text WCAG AAA × Fail

If you want to check with other color combinations, try the [Color Contrast Checker](#).

Hex AF8C5F Background



This preview shows how black text looks on a background with the Hex color AF8C5F.



This preview shows how white text looks on a background with the Hex color AF8C5F.

Color Blindness Simulation

Color vision deficiency is a very complex topic, and I could not describe the different causes any better than Wikipedia does, so if you want to learn more, you should check out their [article about color blindness](#).

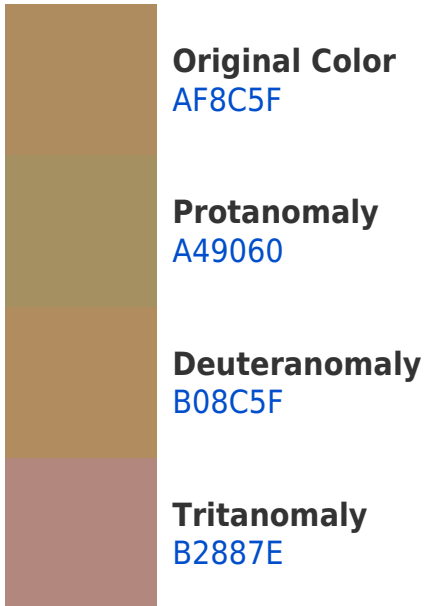
Dichromacy





Tritanopia
B48690

Trichromacy



Monochromacy



CSS Examples

Text

The CSS property to change the color of the text to Hex AF8C5F is called "color". The color property can be set on classes, ids or directly on the HTML element.

This example shows how text in the color #AF8C5F looks like.

```
.text, #text, p{  
    color:#AF8C5F  
}
```

If you want to add a text shadow in that color use the text-shadow property, you can generate a text shadow directly with our [CSS Text Shadow Generator](#).

Here you see how black text with a 4 pixel #AF8C5F colored shadow looks like.

```
.shadow{ text-shadow: 4px 4px 2px #AF8C5F
}
```

Border

The CSS property to change the border of an element to Hex AF8C5F is called "border". The border property can be set on classes, ids or directly on the HTML element.

This example shows the color as border, it can be applied via the CSS property "border" or "border-color".

```
.border, #border, table{ border:4px solid
#AF8C5F }
```

If only the border color should be changed use the property border-color.

```
.border{ border-color:#AF8C5F }
```

If you want to add a box shadow in that color use:

Here you see how a box with a 4 pixel #AF8C5F colored shadow looks like.

```
.boxshadow{ -moz-box-shadow:4px 4px 4px  
4px #AF8C5F; -webkit-box-shadow:4px 4px  
4px 4px #AF8C5F; box-shadow:4px 4px 4px  
4px #AF8C5F }
```

Background

The CSS property to change the background color of an element to Hex AF8C5F is called "background". The background property can be set on classes, ids or directly on the HTML element.

```
.background, #background, body{  
background:#AF8C5F }
```

If only the background color should be changed can be used:

```
.background{ background-color:#AF8C5F }
```

This example shows the color as background, it is applied via the CSS property "background".

To optimize and compress your CSS code, you can use our [online CSS compressor and optimizer](#) based on csstidy. If you want to create a linear or radial gradient as background or border, check our [CSS Gradient Generator](#).

Hey! You found this booklet interesting? Support Converting Colors with the new Membership Option!

The pro membership hides all ads, plus gives you double the colors in the color bucket, and more awesome pro features!

[Learn more, Memberships starting at \\$2.50/m!](#)

**Follow me
on Twitter!**

@ConvertingColor