

Converting Colors

Hex(AF8C91)

Have a look what the booklet for
Hex(AF8C91) contains.

Hex(AF8C91)	3
<i>Conversions</i>	4
<i>Details</i>	6
<i>Harmonies</i>	11
<i>Previews</i>	23
<i>Color Blindness Simulation</i>	26
<i>CSS Examples</i>	29

Color

Hex(AF8C91)

Conversions

Conversions Part 1

Format	Color
Hex	AF8C91
RGB	175, 140, 145
RGB Percent	69%, 55%, 57%
CMY	0.3137, 0.4510, 0.4314
CMYK	0.00, 0.20, 0.17, 0.31
HSL	351°, 18%, 62%
HSV	351°, 20%, 69%
XYZ	32.1681, 29.9145, 30.8667
YIQ	151.0350, 19.2550, 8.9750

Conversions

Conversions Part 2

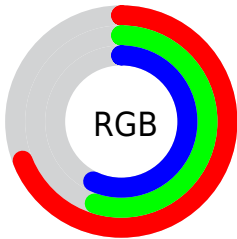
Format	Color
RYB	175, 140, 145
Decimal	11504785
CIELab	61.58, 14.05, 2.38
CIElCh	62, 14.245, 9.601
Yxy	29.9145, 0.3461, 0.3218
Android (android.graphics.Color)	4289694865 (0xFFAF8C91)
YUV	151.0350, -2.9753, 21.0173
Hunter-Lab	54.6941, 9.2693, 4.8255

Details

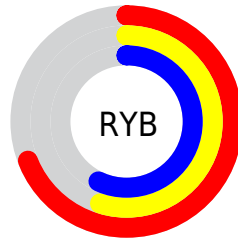
The Hex color **AF8C91** is a light color, and the websafe version is hex **CC9999**. A complement of this color would be **8CAF8A**, and the grayscale version is **979797**.

A 20% lighter version of the original color is **E7C2C7**, and **7A5A5F** is the 20% darker color. If you saturate the color by 10%, you get **AF7B82**, and if you desaturate by 10%, it is **AF9EA0**.

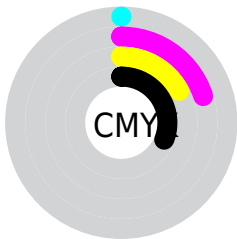
Distribution



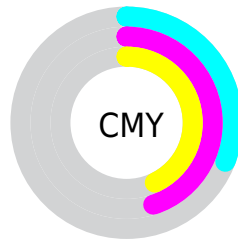
- Red (69%)
- Green (55%)
- Blue (57%)



- Red (69%)
- Yellow (55%)
- Blue (57%)



- Cyan (0%)
- Magenta (20%)
- Yellow (17%)
- Black (31%)



- Cyan (31%)
- Magenta (45%)
- Yellow (43%)

Brightness & Saturation Gradients

These gradients show how the Hex color AF8C91 changes by changing the brightness by 10 percent. The first figure shows a shift by +10% for each color and the second figure -10%.

Similar to the brightness gradients but the following saturation gradients show a change of the Hex color AF8C91 by changing the saturation by 10% instead.



AF8C91



AF8C91

FFFFFF



947277



E7C2C7



7A5A5F



FFDEE3



614247



FFFAFF



482C31



31171C



1F0001



000000



AF8C91



AF8C91



AF7B82



AF9EA0

 AF6973

 AFAFAF

 AF5864

 AFC1BE

 AF4655

 AFD2CD

 AF3546

 AFE4DC

 AF2337

 AFF5EB

 AF1128

 AFFFFA

 AF0019

 AFFFFFF

Harmonies

Analogous

The Analogous color harmony consists of three colors that are next to each other on the color wheel.



A98D9E



AF8C91



AE8E85

Triad

The Triadic color harmony groups three colors that are evenly spaced from another and form a triangle on the color wheel.



AF8C91



8C9981



7D98AC

Complementary

The Complementary color scheme is a pair of colors which are on the opposite of each other on the color wheel.



AF8C91



8CAF8A

Split Complementary

Split-complementary colors differ from the complementary color scheme. The scheme consists of three colors, the original color and two neighbors of the complement color.



749BA4



AF8C91



7F9B8C

Square

The Square scheme is like the rectangle color scheme, but the four colors are evenly spaced on the color wheel.



AF8C91



9B957C



759C98



8C94AD

Rectangle

The Rectangle color scheme consists of four colors that form a rectangle on the color wheel.



AF8C91



AA907F



759C98



7999AA

Sweetspot

The Sweet Spot groups the original color and five complimentary colors.



AF8C91



E3D5D7



AA8CAF



736B6C



F2F2F2



737373

Same Dimension

The Same Dimension uses a secret algorithm to generate beautiful new colors.



AF8C91



E3ACB4



AF988C



574E4F



960015



170003

Inverse Universe

The Inverse Universe completely reimagines the original color for something new.



AF8C91



E3ACB4



8CA3AF



574E4F



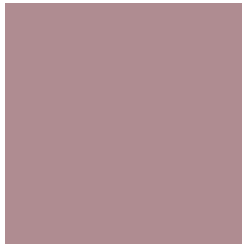
960015



170003

Previews

White Background



This preview shows how the Hex color AF8C91 looks on a white background.

Color Contrast Check

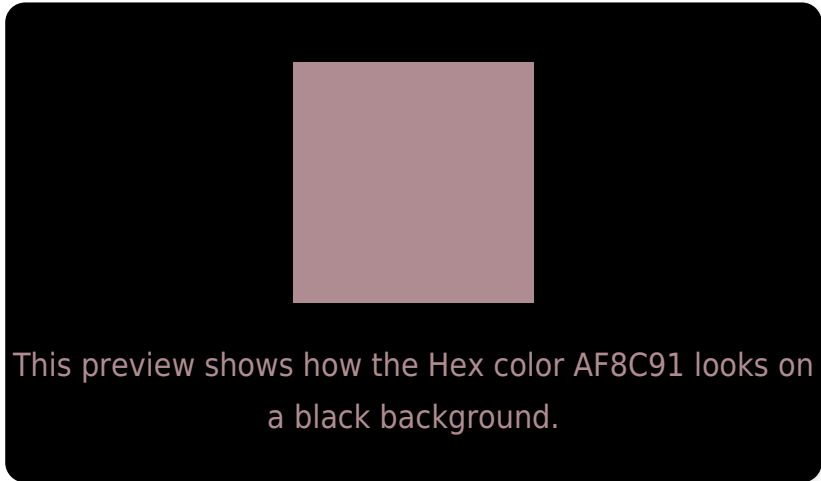
Large Text (above 18pt) WCAG AA ✓ Pass

Any Text WCAG AA ✗ Fail

Large Text (above 18pt) WCAG AAA ✗ Fail

Any Text WCAG AAA ✗ Fail

Black Background



Color Contrast Check

Large Text (above 18pt) WCAG AA ✓ Pass

Any Text WCAG AA ✓ Pass

Large Text (above 18pt) WCAG AAA ✓ Pass

Any Text WCAG AAA × Fail

If you want to check with other color combinations, try the [Color Contrast Checker](#).

Hex AF8C91 Background



This preview shows how black text looks on a background with the Hex color AF8C91.



This preview shows how white text looks on a background with the Hex color AF8C91.

Color Blindness Simulation

Color vision deficiency is a very complex topic, and I could not describe the different causes any better than Wikipedia does, so if you want to learn more, you should check out their [article about color blindness](#).

Dichromacy



Original Color
AF8C91

Protanopia
979496

Deuteranopia
A59090



Tritanopia
B08B96

Trichromacy



Original Color
AF8C91

Protanomaly
A09194

Deuteranomaly
A98F90

Tritanomaly
B08B94

Monochromacy



Original Color
AF8C91

Achromatopsia
979797

Achromatomaly
A09395

CSS Examples

Text

The CSS property to change the color of the text to Hex AF8C91 is called "color". The color property can be set on classes, ids or directly on the HTML element.

This example shows how text in the color #AF8C91 looks like.

```
.text, #text, p{  
    color:#AF8C91  
}
```

If you want to add a text shadow in that color use the text-shadow property, you can generate a text shadow directly with our [CSS Text Shadow Generator](#).

Here you see how black text with a 4 pixel #AF8C91 colored shadow looks like.

```
.shadow{ text-shadow: 4px 4px 2px #AF8C91
}
```

Border

The CSS property to change the border of an element to Hex AF8C91 is called "border". The border property can be set on classes, ids or directly on the HTML element.

This example shows the color as border, it can be applied via the CSS property "border" or "border-color".

```
.border, #border, table{ border:4px solid
#AF8C91 }
```

If only the border color should be changed use the property `border-color`.

```
.border{ border-color:#AF8C91 }
```

If you want to add a box shadow in that color use:

Here you see how a box with a 4 pixel #AF8C91 colored shadow looks like.

```
.boxshadow{ -moz-box-shadow:4px 4px 4px  
4px #AF8C91; -webkit-box-shadow:4px 4px  
4px 4px #AF8C91; box-shadow:4px 4px 4px  
4px #AF8C91 }
```

Background

The CSS property to change the background color of an element to Hex AF8C91 is called "background". The background property can be set on classes, ids or directly on the HTML element.

```
.background, #background, body{  
background:#AF8C91 }
```

If only the background color should be changed can be used:

```
.background{ background-color:#AF8C91 }
```

This example shows the color as background, it is applied via the CSS property "background".

To optimize and compress your CSS code, you can use our [online CSS compressor and optimizer](#) based on csstidy. If you want to create a linear or radial gradient as background or border, check our [CSS Gradient Generator](#).

Hey! You found this booklet interesting? Support Converting Colors with the new Membership Option!

The pro membership hides all ads, plus gives you double the colors in the color bucket, and more awesome pro features!

[Learn more, Memberships starting at \\$2.50/m!](#)

**Follow me
on Twitter!**

@ConvertingColor