

Converting Colors

Hex(AF8E6D)

Have a look what the booklet for
Hex(AF8E6D) contains.

Hex(AF8E6D)	3
<i>Conversions</i>	4
<i>Details</i>	6
<i>Harmonies</i>	11
<i>Previews</i>	23
<i>Color Blindness Simulation</i>	26
<i>CSS Examples</i>	29

Color

Hex(AF8E6D)

Conversions

Conversions Part 1

Format	Color
Hex	AF8E6D
RGB	175, 142, 109
RGB Percent	69%, 56%, 43%
CMY	0.3137, 0.4431, 0.5725
CMYK	0.00, 0.19, 0.38, 0.31
HSL	30°, 29%, 56%
HSV	30°, 38%, 69%
XYZ	30.1125, 29.5641, 18.5873
YIQ	148.1050, 30.2610, -3.2670

Conversions

Conversions Part 2

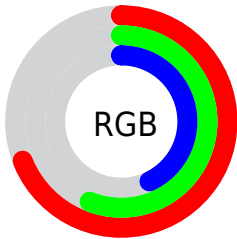
Format	Color
R_{YB}	175, 175, 109
Decimal	11505261
CIE _{Lab}	61.28, 7.77, 22.29
CIE _{LCh}	61, 23.604, 70.780
Yxy	29.5641, 0.3848, 0.3777
Android (android.graphics.Color)	4289695341 (0xFFAF8E6D)
YUV	148.1050, -19.2788, 23.5869
Hunter-Lab	54.3729, 3.7035, 17.7928

Details

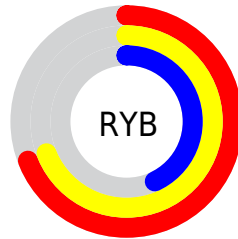
The Hex color **AF8E6D** is a dark color, and the websafe version is hex **CC9966**. A complement of this color would be **6D8EAF**, and the grayscale version is **949494**.

A 20% lighter version of the original color is **E8C4A1**, and **795C3D** is the 20% darker color. If you saturate the color by 10%, you get **AF855C**, and if you desaturate by 10%, it is **AF977F**.

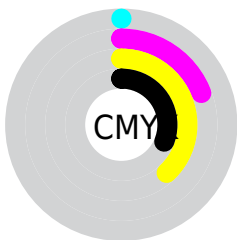
Distribution



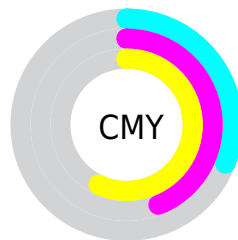
- Red (69%)
- Green (56%)
- Blue (43%)



- Red (69%)
- Yellow (69%)
- Blue (43%)



- Cyan (0%)
- Magenta (19%)
- Yellow (38%)
- Black (31%)



- Cyan (31%)
- Magenta (44%)
- Yellow (57%)

Brightness & Saturation Gradients

These gradients show how the Hex color AF8E6D changes by changing the brightness by 10 percent. The first figure shows a shift by +10% for each color and the second figure -10%.

Similar to the brightness gradients but the following saturation gradients show a change of the Hex color AF8E6D by changing the saturation by 10% instead.

 AF8E6D

 AF8E6D

FFFFFF

 947455

 E8C4A1

 795C3D

 FFE0BC

 5F4427

 FFFCD8

 462E12

 FFFFF4

 2F1900

 170000

 000000

 AF8E6D

 AF8E6D

 AF855C

 AF977F

 AF7D4A

 AFA090

 AF7438

 AFA8A2

 AF6B27

 AFB1B3

 AF6215

 AFBAC4

 AF5A04

 AFC3D6

 AF5800

 AFCBE8

 AFD4F9

 AFDDFF

Harmonies

Analogous

The Analogous color harmony consists of three colors that are next to each other on the color wheel.



BB887A



AF8E6D



9B956B

Triad

The Triadic color harmony groups three colors that are evenly spaced from another and form a triangle on the color wheel.



AF8E6D



5AA09B



A18CB4

Complementary

The Complementary color scheme is a pair of colors which are on the opposite of each other on the color wheel.



AF8E6D



6D8EAF

Split Complementary

Split-complementary colors differ from the complementary color scheme. The scheme consists of three colors, the original color and two neighbors of the complement color.



8593BD



AF8E6D



579EAE

Square

The Square scheme is like the rectangle color scheme, but the four colors are evenly spaced on the color wheel.



AF8E6D



6C9F86



689ABB



B586A2

Rectangle

The Rectangle color scheme consists of four colors that form a rectangle on the color wheel.



AF8E6D



8C9970



689ABB



988EB8

Sweetspot

The Sweet Spot groups the original color and five complimentary colors.



AF8E6D



E3D6CA



AF6D8E



736B64



F2F2F2



737373

Same Dimension

The Same Dimension uses a secret algorithm to generate beautiful new colors.



AF8E6D



E3B07D



AFAF6D



57524E



964B00



170B00

Inverse Universe

The Inverse Universe completely reimagines the original color for something new.



6D8EAF



7DB0E3



6D6DAF



4E5257



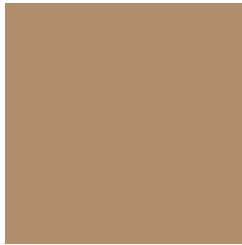
004B96



000B17

Previews

White Background



This preview shows how the Hex color AF8E6D looks on a white background.

Color Contrast Check

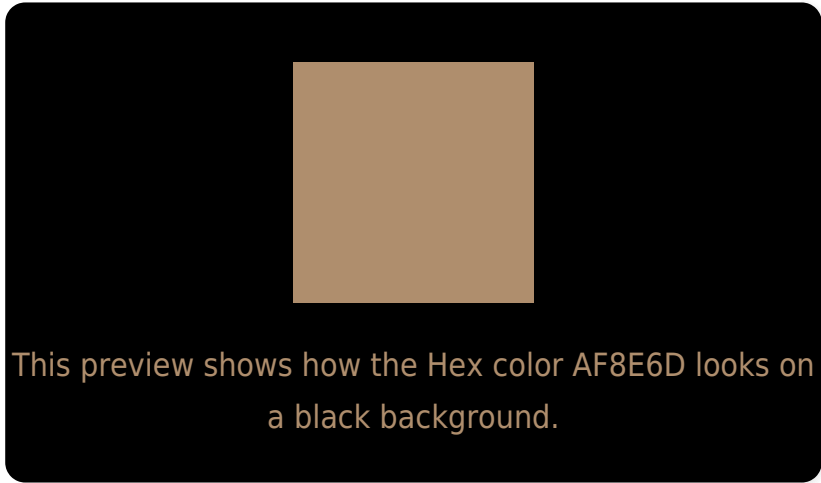
Large Text (above 18pt) WCAG AA ✓ Pass

Any Text WCAG AA ✗ Fail

Large Text (above 18pt) WCAG AAA ✗ Fail

Any Text WCAG AAA ✗ Fail

Black Background



Color Contrast Check

Large Text (above 18pt) WCAG AA ✓ Pass

Any Text WCAG AA ✓ Pass

Large Text (above 18pt) WCAG AAA ✓ Pass

Any Text WCAG AAA × Fail

If you want to check with other color combinations, try the [Color Contrast Checker](#).

Hex AF8E6D Background



This preview shows how black text looks on a background with the Hex color AF8E6D.

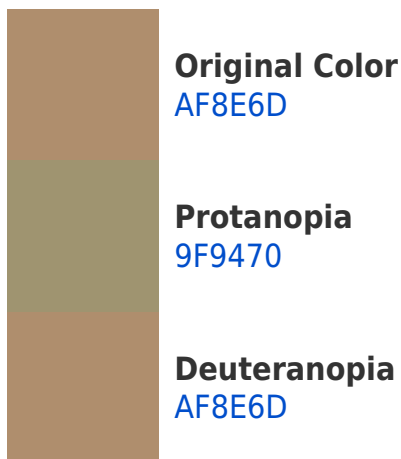


This preview shows how white text looks on a background with the Hex color AF8E6D.

Color Blindness Simulation

Color vision deficiency is a very complex topic, and I could not describe the different causes any better than Wikipedia does, so if you want to learn more, you should check out their [article about color blindness](#).

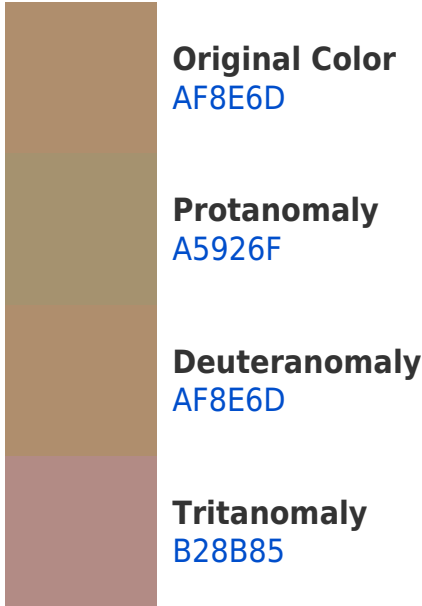
Dichromacy



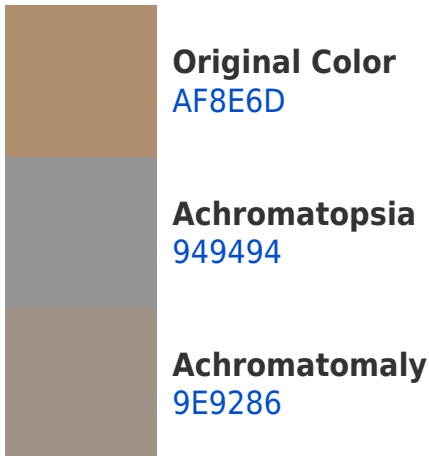


Tritanopia
B38993

Trichromacy



Monochromacy



CSS Examples

Text

The CSS property to change the color of the text to Hex AF8E6D is called "color". The color property can be set on classes, ids or directly on the HTML element.

This example shows how text in the color #AF8E6D looks like.

```
.text, #text, p{  
    color:#AF8E6D  
}
```

If you want to add a text shadow in that color use the text-shadow property, you can generate a text shadow directly with our [CSS Text Shadow Generator](#).

Here you see how black text with a 4 pixel #AF8E6D colored shadow looks like.

```
.shadow{ text-shadow: 4px 4px 2px #AF8E6D
}
```

Border

The CSS property to change the border of an element to Hex AF8E6D is called "border". The border property can be set on classes, ids or directly on the HTML element.

This example shows the color as border, it can be applied via the CSS property "border" or "border-color".

```
.border, #border, table{ border:4px solid
#AF8E6D }
```

If only the border color should be changed use the property `border-color`.

```
.border{ border-color:#AF8E6D }
```

If you want to add a box shadow in that color use:

Here you see how a box with a 4 pixel #AF8E6D colored shadow looks like.

```
.boxshadow{ -moz-box-shadow:4px 4px 4px  
4px #AF8E6D; -webkit-box-shadow:4px 4px  
4px 4px #AF8E6D; box-shadow:4px 4px 4px  
4px #AF8E6D }
```

Background

The CSS property to change the background color of an element to Hex AF8E6D is called "background". The background property can be set on classes, ids or directly on the HTML element.

```
.background, #background, body{  
background:#AF8E6D }
```

If only the background color should be changed can be used:

```
.background{ background-color:#AF8E6D }
```

This example shows the color as background, it is applied via the CSS property "background".

To optimize and compress your CSS code, you can use our [online CSS compressor and optimizer](#) based on csstidy. If you want to create a linear or radial gradient as background or border, check our [CSS Gradient Generator](#).

Hey! You found this booklet interesting? Support Converting Colors with the new Membership Option!

The pro membership hides all ads, plus gives you double the colors in the color bucket, and more awesome pro features!

[Learn more, Memberships starting at \\$2.50/m!](#)

**Follow me
on Twitter!**

@ConvertingColor