

# Converting Colors

Hex(AF8F72)

Have a look what the booklet for  
Hex(AF8F72) contains.

<b>Hex(AF8F72)</b> .....	3
<b><i>Conversions</i></b> .....	4
<b><i>Details</i></b> .....	6
<b><i>Harmonies</i></b> .....	11
<b><i>Previews</i></b> .....	23
<b><i>Color Blindness Simulation</i></b> .....	26
<b><i>CSS Examples</i></b> .....	29

**Color**

**Hex(AF8F72)**

# Conversions

## Conversions Part 1

<b>Format</b>	<b>Color</b>
Hex	AF8F72
RGB	175, 143, 114
RGB Percent	69%, 56%, 45%
CMY	0.3137, 0.4392, 0.5529
CMYK	0.00, 0.18, 0.35, 0.31
HSL	29°, 28%, 57%
HSV	29°, 35%, 69%
XYZ	30.5389, 29.9738, 20.0955
YIQ	149.2620, 28.3810, -2.2350

# Conversions

## Conversions Part 2

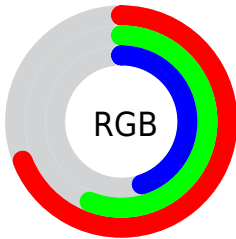
<b>Format</b>	<b>Color</b>
<b>RYB</b>	175, 169, 114
Decimal	11505522
CIELab	61.63, 7.84, 19.98
CIELCh	62, 21.461, 68.573
Yxy	29.9738, 0.3789, 0.3718
Android (android.graphics.Color)	4289695602 (0xFFAF8F72)
YUV	149.2620, -17.3842, 22.5722
Hunter-Lab	54.7483, 3.7587, 16.5613

# Details

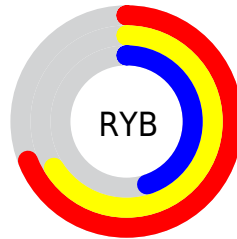
The Hex color **AF8F72** is a dark color, and the websafe version is hex **CC9966**. A complement of this color would be **7292AF**, and the grayscale version is **959595**.

A 20% lighter version of the original color is **E7C5A6**, and **795D42** is the 20% darker color. If you saturate the color by 10%, you get **AF8661**, and if you desaturate by 10%, it is **AF9884**.

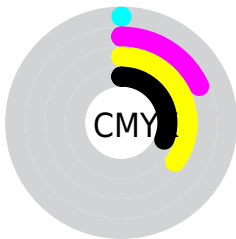
# Distribution



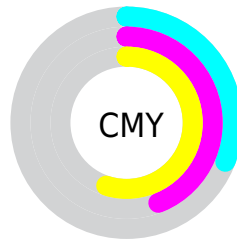
- Red (69%)
- Green (56%)
- Blue (45%)



- Red (69%)
- Yellow (66%)
- Blue (45%)



- Cyan (0%)
- Magenta (18%)
- Yellow (35%)
- Black (31%)



- Cyan (31%)
- Magenta (44%)
- Yellow (55%)

# Brightness & Saturation Gradients

These gradients show how the Hex color AF8F72 changes by changing the brightness by 10 percent. The first figure shows a shift by +10% for each color and the second figure -10%.

Similar to the brightness gradients but the following saturation gradients show a change of the Hex color AF8F72 by changing the saturation by 10% instead.





AF8F72



AF8F72

FFFFFF



947559



E7C5A6



795D42



FFE1C1



60452B



FFFD



472F16



FFFF



301A00



180000



000000



AF8F72



AF8F72



AF8661



AF9884

■ AF7D4F

■ AFA195

■ AF733E

■ AFABA7

■ AF6A2C

■ AFB4B8

■ AF611A

■ AFBDC A

■ AF5809

■ AFC6DB

■ AF5300

■ AFCFED

■ AFD8FE

■ AFE2FF

# Harmonies

## Analogous

The Analogous color harmony consists of three colors that are next to each other on the color wheel.



BA8A7E



AF8F72



9D956F

# Triad

The Triadic color harmony groups three colors that are evenly spaced from another and form a triangle on the color wheel.



AF8F72



62A09A



9F8EB3

# Complementary

The Complementary color scheme is a pair of colors which are on the opposite of each other on the color wheel.



AF8F72



7292AF

# Split Complementary

Split-complementary colors differ from the complementary color scheme. The scheme consists of three colors, the original color and two neighbors of the complement color.



8595BA



AF8F72



5F9EAC

# Square

The Square scheme is like the rectangle color scheme, but the four colors are evenly spaced on the color wheel.



AF8F72



739E86



6D9BB8



B289A3

# Rectangle

The Rectangle color scheme consists of four colors that form a rectangle on the color wheel.



AF8F72



909973



6D9BB8



9790B6



# Sweetspot

The Sweet Spot groups the original color and five complimentary colors.



AF8F72



E3D7CC



AF7293



736C65



F2F2F2



737373



# Same Dimension

The Same Dimension uses a secret algorithm to generate beautiful new colors.



AF8F72



E3B184



AFAD72



57524E



964800



170B00



# Inverse Universe

The Inverse Universe completely reimagines the original color for something new.



7292AF



84B6E3



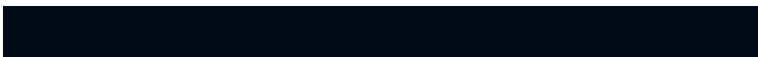
7274AF



4E5357



004F96

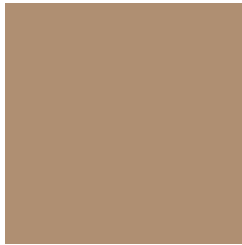


000C17



# Previews

## White Background



This preview shows how the Hex color AF8F72 looks on a white background.

## Color Contrast Check

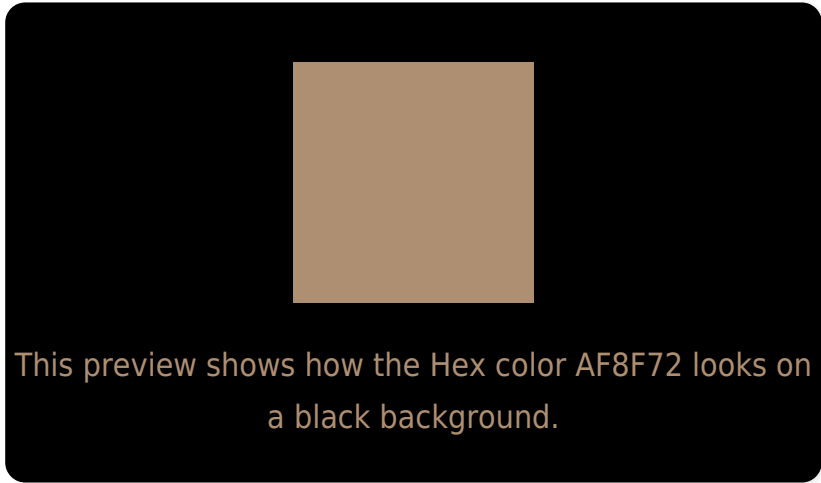
Large Text (above 18pt) WCAG AA ✓ Pass

Any Text WCAG AA × Fail

Large Text (above 18pt) WCAG AAA × Fail

Any Text WCAG AAA × Fail

# Black Background



## Color Contrast Check

Large Text (above 18pt) WCAG AA ✓ Pass

Any Text WCAG AA ✓ Pass

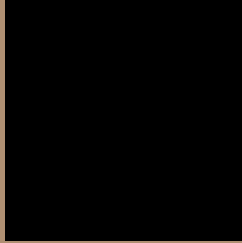
Large Text (above 18pt) WCAG AAA ✓ Pass

Any Text WCAG AAA × Fail

If you want to check with other color combinations, try the [Color Contrast Checker](#).



## Hex AF8F72 Background



This preview shows how black text looks on a background with the Hex color AF8F72.



This preview shows how white text looks on a background with the Hex color AF8F72.

# Color Blindness Simulation

Color vision deficiency is a very complex topic, and I could not describe the different causes any better than Wikipedia does, so if you want to learn more, you should check out their [article about color blindness](#).


## Dichromacy



**Original Color**  
AF8F72

**Protanopia**  
9F9575

**Deuteranopia**  
AF8F72

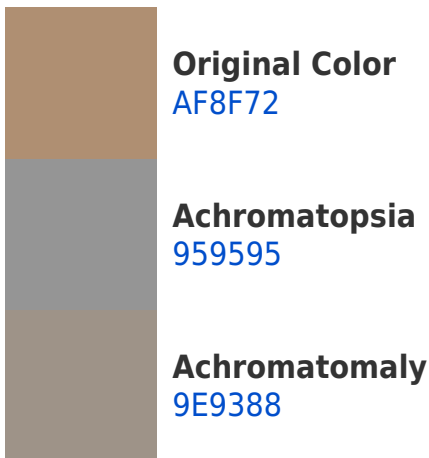


**Tritanopia**  
B38A95

# Trichromacy



# Monochromacy



# CSS Examples

## Text

The CSS property to change the color of the text to Hex AF8F72 is called "color". The color property can be set on classes, ids or directly on the HTML element.

This example shows how text in the color #AF8F72 looks like.

```
.text, #text, p{  
    color:#AF8F72  
}
```

If you want to add a text shadow in that color use the text-shadow property, you can generate a text shadow directly with our [CSS Text Shadow Generator](#).

Here you see how black text with a 4 pixel #AF8F72 colored shadow looks like.

```
.shadow{ text-shadow: 4px 4px 2px #AF8F72
}
```

## Border

The CSS property to change the border of an element to Hex AF8F72 is called "border". The border property can be set on classes, ids or directly on the HTML element.

This example shows the color as border, it can be applied via the CSS property "border" or "border-color".

```
.border, #border, table{ border:4px solid
#AF8F72 }
```

If only the border color should be changed use the property `border-color`.

```
.border{ border-color:#AF8F72 }
```

If you want to add a box shadow in that color use:

Here you see how a box with a 4 pixel #AF8F72 colored shadow looks like.

```
.boxshadow{ -moz-box-shadow:4px 4px 4px  
4px #AF8F72; -webkit-box-shadow:4px 4px  
4px 4px #AF8F72; box-shadow:4px 4px 4px  
4px #AF8F72 }
```

# Background

The CSS property to change the background color of an element to Hex AF8F72 is called "background". The background property can be set on classes, ids or directly on the HTML element.

```
.background, #background, body{  
background:#AF8F72 }
```

If only the background color should be changed can be used:

```
.background{ background-color:#AF8F72 }
```

This example shows the color as background, it is applied via the CSS property "background".

To optimize and compress your CSS code, you can use our [online CSS compressor and optimizer](#) based on csstidy. If you want to create a linear or radial gradient as background or border, check our [CSS Gradient Generator](#).



Hey! You found this booklet interesting? Support Converting Colors with the new Membership Option!

The pro membership hides all ads, plus gives you double the colors in the color bucket, and more awesome pro features!

**[Learn more, Memberships starting at \\$2.50/m!](#)**

**Follow me  
on Twitter!**

@ConvertingColor