

# Converting Colors

Hex(AF9695)

Have a look what the booklet for  
Hex(AF9695) contains.

<b>Hex(AF9695)</b> .....	3
<b><i>Conversions</i></b> .....	4
<b><i>Details</i></b> .....	6
<b><i>Harmonies</i></b> .....	11
<b><i>Previews</i></b> .....	23
<b><i>Color Blindness Simulation</i></b> .....	26
<b><i>CSS Examples</i></b> .....	29

# **Color**

**Hex(AF9695)**

# Conversions

## Conversions Part 1

Format	Color
Hex	AF9695
RGB	175, 150, 149
RGB Percent	69%, 59%, 58%
CMY	0.3137, 0.4118, 0.4157
CMYK	0.00, 0.14, 0.15, 0.31
HSL	2°, 14%, 64%
HSV	2°, 15%, 69%
XYZ	34.0104, 33.0966, 33.0295
YIQ	157.3610, 15.2210, 4.9890

# Conversions

## Conversions Part 2

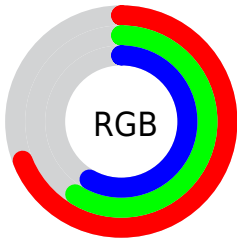
<b>Format</b>	<b>Color</b>
<b>R<sub>YB</sub></b>	175, 150, 149
Decimal	11507349
CIE Lab	64.24, 9.11, 3.96
CIE LCh	64, 9.937, 23.486
Yxy	33.0966, 0.3396, 0.3305
Android (android.graphics.Color)	4289697429 (0xFFAF9695)
YUV	157.3610, -4.1220, 15.4694
Hunter-Lab	57.5296, 4.8488, 6.2305

# Details

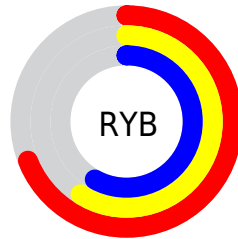
The Hex color **AF9695** is a light color, and the websafe version is hex **999999**. A complement of this color would be **95AEAF**, and the grayscale version is **9D9D9D**.

A 20% lighter version of the original color is **E7CCCB**, and **7A6362** is the 20% darker color. If you saturate the color by 10%, you get **AF8584**, and if you desaturate by 10%, it is **AFA7A7**.

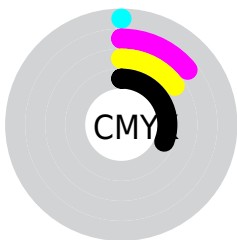
# Distribution



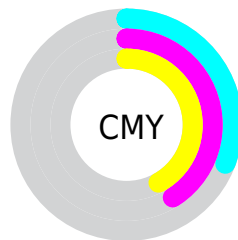
- Red (69%)
- Green (59%)
- Blue (58%)



- Red (69%)
- Yellow (59%)
- Blue (58%)



- Cyan (0%)
- Magenta (14%)
- Yellow (15%)
- Black (31%)



- Cyan (31%)
- Magenta (41%)
- Yellow (42%)

# Brightness & Saturation Gradients

These gradients show how the Hex color AF9695 changes by changing the brightness by 10 percent. The first figure shows a shift by +10% for each color and the second figure -10%.

Similar to the brightness gradients but the following saturation gradients show a change of the Hex color AF9695 by changing the saturation by 10% instead.



 AF9695

 AF9695

FFFFFF

 947C7B

 E7CCCB

 7A6362

 FFE8E7

 614B4B

 493534

 321F1F

 1E0806

 000000

 AF9695

 AF9695

 AF8584

 AFA7A7

 AF7472

 AFB8B8

 AF6461

 AFC8CA

 AF534F

 AFD9DB

 AF423E

 AFEAED

 AF312C

 AFFBFE

 AF201B

 AFFFFFF

 AF0F09

 AF0700

# Harmonies

## Analogous

The Analogous color harmony consists of three colors that are next to each other on the color wheel.



AD969E



AF9695



AC988E

# Triad

The Triadic color harmony groups three colors that are evenly spaced from another and form a triangle on the color wheel.



AF9695



91A091



909DAD

# Complementary

The Complementary color scheme is a pair of colors which are on the opposite of each other on the color wheel.



AF9695



95AEAF

# Split Complementary

Split-complementary colors differ from the complementary color scheme. The scheme consists of three colors, the original color and two neighbors of the complement color.



889FAA



AF9695



89A199

# Square

The Square scheme is like the rectangle color scheme, but the four colors are evenly spaced on the color wheel.



AF9695



9B9D8B



86A1A2



9B9AAC

# Rectangle

The Rectangle color scheme consists of four colors that form a rectangle on the color wheel.



AF9695



A8998B



86A1A2



8D9EAC



# Sweetspot

The Sweet Spot groups the original color and five complimentary colors.



AF9695



E3DADA



AF95AE



736D6D



F2F2F2



737373



# Same Dimension

The Same Dimension uses a secret algorithm to generate beautiful new colors.



AF9695



E3BCBA



AFA395



574E4E



960600



170100



# Inverse Universe

The Inverse Universe completely reimagines the original color for something new.



95AEAF



BAE1E3



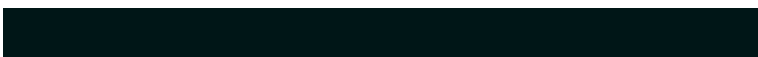
95A1AF



4E5657



009196

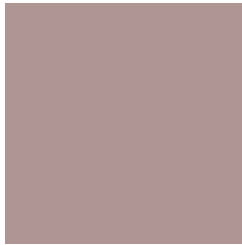


001617



# Previews

## White Background



This preview shows how the Hex color AF9695 looks on a white background.

## Color Contrast Check

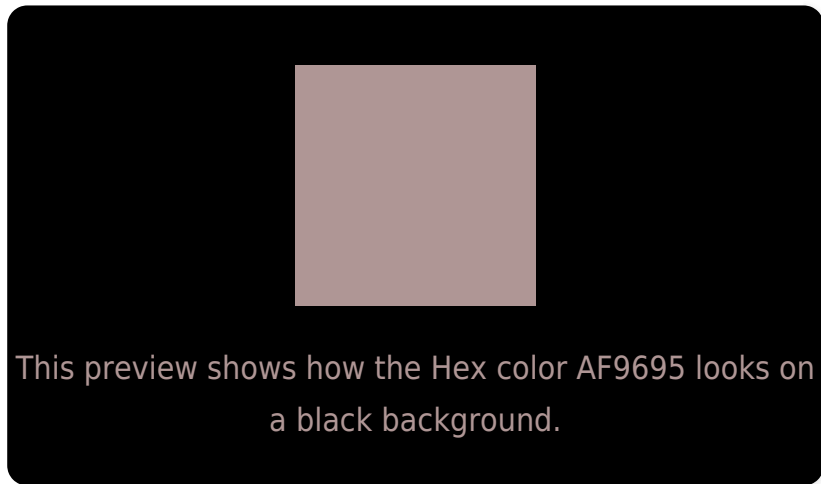
Large Text (above 18pt) WCAG AA × Fail

Any Text WCAG AA × Fail

Large Text (above 18pt) WCAG AAA × Fail

Any Text WCAG AAA × Fail

# Black Background



## Color Contrast Check

Large Text (above 18pt) WCAG AA ✓ Pass

Any Text WCAG AA ✓ Pass

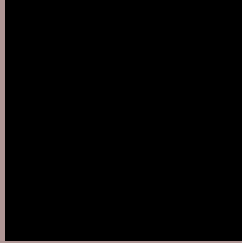
Large Text (above 18pt) WCAG AAA ✓ Pass

Any Text WCAG AAA ✓ Pass

If you want to check with other color combinations, try the [Color Contrast Checker](#).



## Hex AF9695 Background



This preview shows how black text looks on a background with the Hex color AF9695.



This preview shows how white text looks on a background with the Hex color AF9695.

# Color Blindness Simulation

Color vision deficiency is a very complex topic, and I could not describe the different causes any better than Wikipedia does, so if you want to learn more, you should check out their [article about color blindness](#).


## Dichromacy



**Original Color**  
AF9695

**Protanopia**  
A09B98

**Deuteranopia**  
AD9795



**Tritanopia**  
B094A0

# Trichromacy



**Original Color**  
AF9695

**Protanomaly**  
A59997

**Deuteranomaly**  
AE9795

**Tritanomaly**  
B0959C

# Monochromacy



**Original Color**  
AF9695

**Achromatopsia**  
9D9D9D

**Achromatomaly**  
A49A9A

# CSS Examples

## Text

The CSS property to change the color of the text to Hex AF9695 is called "color". The color property can be set on classes, ids or directly on the HTML element.

This example shows how text in the color #AF9695 looks like.

```
.text, #text, p{  
    color:#AF9695  
}
```

If you want to add a text shadow in that color use the text-shadow property, you can generate a text shadow directly with our [CSS Text Shadow Generator](#).

Here you see how black text with a 4 pixel #AF9695 colored shadow looks like.

```
.shadow{ text-shadow: 4px 4px 2px #AF9695
}
```

## Border

The CSS property to change the border of an element to Hex AF9695 is called "border". The border property can be set on classes, ids or directly on the HTML element.

This example shows the color as border, it can be applied via the CSS property "border" or "border-color".

```
.border, #border, table{ border:4px solid
#AF9695 }
```

If only the border color should be changed use the property border-color.

```
.border{ border-color:#AF9695 }
```

If you want to add a box shadow in that color use:

Here you see how a box with a 4 pixel #AF9695 colored shadow looks like.

```
.boxshadow{ -moz-box-shadow:4px 4px 4px  
4px #AF9695; -webkit-box-shadow:4px 4px  
4px 4px #AF9695; box-shadow:4px 4px 4px  
4px #AF9695 }
```

# Background

The CSS property to change the background color of an element to Hex AF9695 is called "background". The background property can be set on classes, ids or directly on the HTML element.

```
.background, #background, body{  
background:#AF9695 }
```

If only the background color should be changed can be used:

```
.background{ background-color:#AF9695 }
```

This example shows the color as background, it is applied via the CSS property "background".

To optimize and compress your CSS code, you can use our [online CSS compressor and optimizer](#) based on csstidy. If you want to create a linear or radial gradient as background or border, check our [CSS Gradient Generator](#).



Hey! You found this booklet interesting? Support Converting Colors with the new Membership Option!

The pro membership hides all ads, plus gives you double the colors in the color bucket, and more awesome pro features!

**[Learn more, Memberships starting at \\$2.50/m!](#)**

**Follow me  
on Twitter!**

@ConvertingColor