

# Converting Colors

Hex(AF9797)

Have a look what the booklet for  
Hex(AF9797) contains.

<b>Hex(AF9797)</b> .....	3
<i><b>Conversions</b></i> .....	4
<i><b>Details</b></i> .....	6
<i><b>Harmonies</b></i> .....	11
<i><b>Previews</b></i> .....	23
<i><b>Color Blindness Simulation</b></i> .....	26
<i><b>CSS Examples</b></i> .....	29

# **Color**

**Hex(AF9797)**

# Conversions

## Conversions Part 1

Format	Color
Hex	AF9797
RGB	175, 151, 151
RGB Percent	69%, 59%, 59%
CMY	0.3137, 0.4078, 0.4078
CMYK	0.00, 0.14, 0.14, 0.31
HSL	0°, 13%, 64%
HSV	0°, 14%, 69%
XYZ	34.3317, 33.4815, 33.9313
YIQ	158.1760, 14.3040, 5.0880

# Conversions

## Conversions Part 2

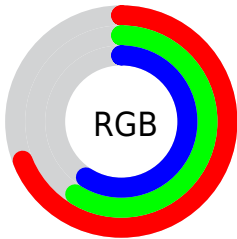
<b>Format</b>	<b>Color</b>
<b>RYB</b>	175, 151, 151
Decimal	11507607
CIELab	64.55, 8.89, 3.28
CIELCh	65, 9.479, 20.260
Yxy	33.4815, 0.3374, 0.3291
Android (android.graphics.Color)	4289697687 (0xFFAF9797)
YUV	158.1760, -3.5378, 14.7546
Hunter-Lab	57.8632, 4.6479, 5.7363

# Details

The Hex color **AF9797** is a light color, and the websafe version is hex **999999**. A complement of this color would be **97AFAF**, and the grayscale version is **9E9E9E**.

A 20% lighter version of the original color is **E7CDCD**, and **7A6464** is the 20% darker color. If you saturate the color by 10%, you get **AF8686**, and if you desaturate by 10%, it is **AFA9A9**.

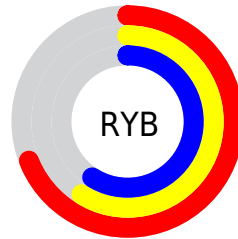
# Distribution



Red (69%)

Green (59%)

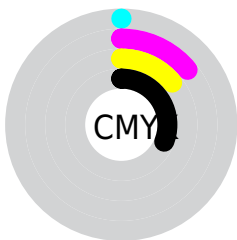
Blue (59%)



Red (69%)

Yellow (59%)

Blue (59%)

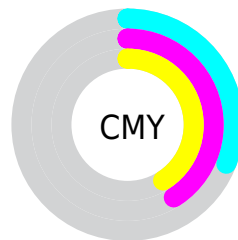


Cyan (0%)

Magenta (14%)

Yellow (14%)

Black (31%)



Cyan (31%)

Magenta (41%)

Yellow (41%)

# Brightness & Saturation Gradients

These gradients show how the Hex color AF9797 changes by changing the brightness by 10 percent. The first figure shows a shift by +10% for each color and the second figure -10%.

Similar to the brightness gradients but the following saturation gradients show a change of the Hex color AF9797 by changing the saturation by 10% instead.





AF9797



AF9797

FFFFFF



947D7D



E7CDCD



7A6464



FFE9E9



614C4C



493536



322020



1E0909



000000



AF9797



AF9797



AF8686



AFA9A9

 AF7474

 AFBABA

 AF6262

 AFCBCB

 AF5151

 AFDDDD

 AF4040

 AFEEEE

 AF2E2E

 AFFFFFF

 AF1C1C

 AF0B0B

 AF0000

# Harmonies

## Analogous

The Analogous color harmony consists of three colors that are next to each other on the color wheel.



AC97A0



AF9797



AD9890

# Triad

The Triadic color harmony groups three colors that are evenly spaced from another and form a triangle on the color wheel.



AF9797



94A092



919EAD

# Complementary

The Complementary color scheme is a pair of colors which are on the opposite of each other on the color wheel.



AF9797



97AFAF

# Split Complementary

Split-complementary colors differ from the complementary color scheme. The scheme consists of three colors, the original color and two neighbors of the complement color.



89A0A9



AF9797



8BA199

# Square

The Square scheme is like the rectangle color scheme, but the four colors are evenly spaced on the color wheel.



AF9797



9D9E8D



88A2A2



9B9BAC

# Rectangle

The Rectangle color scheme consists of four colors that form a rectangle on the color wheel.



AF9797



A99A8D



88A2A2



8E9FAC



# Sweetspot

The Sweet Spot groups the original color and five complimentary colors.



AF9797



E3DADA



AF97AF



736D6D



F2F2F2



737373



# Same Dimension

The Same Dimension uses a secret algorithm to generate beautiful new colors.



AF9797



E3BFBF



AFA397



574E4E



960000



170000



# Inverse Universe

The Inverse Universe completely reimagines the original color for something new.



97AF AF



BF E3 E3



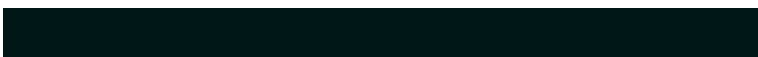
97 A3 AF



4E 57 57



00 96 96

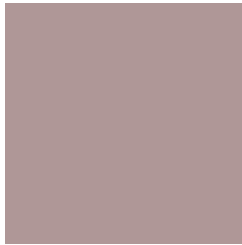


00 17 17



# Previews

## White Background



This preview shows how the Hex color AF9797 looks on a white background.

## Color Contrast Check

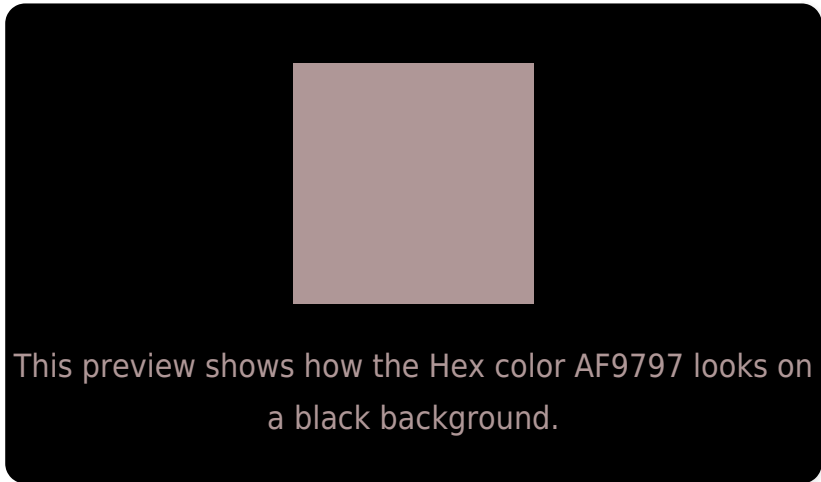
Large Text (above 18pt) WCAG AA × Fail

Any Text WCAG AA × Fail

Large Text (above 18pt) WCAG AAA × Fail

Any Text WCAG AAA × Fail

# Black Background



## Color Contrast Check

Large Text (above 18pt) WCAG AA ✓ Pass

Any Text WCAG AA ✓ Pass

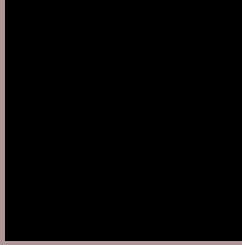
Large Text (above 18pt) WCAG AAA ✓ Pass

Any Text WCAG AAA ✓ Pass

If you want to check with other color combinations, try the [Color Contrast Checker](#).



## Hex AF9797 Background



This preview shows how black text looks on a background with the Hex color AF9797.

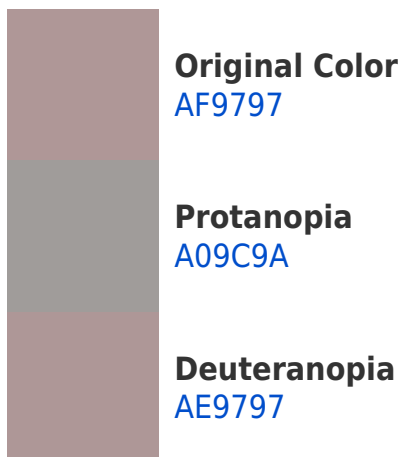


This preview shows how white text looks on a background with the Hex color AF9797.

# Color Blindness Simulation

Color vision deficiency is a very complex topic, and I could not describe the different causes any better than Wikipedia does, so if you want to learn more, you should check out their [article about color blindness](#).

## Dichromacy





**Tritanopia**  
B095A1

# Trichromacy



**Original Color**  
AF9797

**Protanomaly**  
A59A99

**Deuteranomaly**  
AE9797

**Tritanomaly**  
B0969D

# Monochromacy



**Original Color**  
AF9797

**Achromatopsia**  
9E9E9E

**Achromatomaly**  
A49B9B

# CSS Examples

## Text

The CSS property to change the color of the text to Hex AF9797 is called "color". The color property can be set on classes, ids or directly on the HTML element.

This example shows how text in the color #AF9797 looks like.

```
.text, #text, p{  
    color:#AF9797  
}
```

If you want to add a text shadow in that color use the text-shadow property, you can generate a text shadow directly with our [CSS Text Shadow Generator](#).

Here you see how black text with a 4 pixel #AF9797 colored shadow looks like.

```
.shadow{ text-shadow: 4px 4px 2px #AF9797
}
```

## Border

The CSS property to change the border of an element to Hex AF9797 is called "border". The border property can be set on classes, ids or directly on the HTML element.

This example shows the color as border, it can be applied via the CSS property "border" or "border-color".

```
.border, #border, table{ border:4px solid
#AF9797 }
```

If only the border color should be changed use the property border-color.

```
.border{ border-color:#AF9797 }
```

If you want to add a box shadow in that color use:

Here you see how a box with a 4 pixel #AF9797 colored shadow looks like.

```
.boxshadow{ -moz-box-shadow:4px 4px 4px  
4px #AF9797; -webkit-box-shadow:4px 4px  
4px 4px #AF9797; box-shadow:4px 4px 4px  
4px #AF9797 }
```

# Background

The CSS property to change the background color of an element to Hex AF9797 is called "background". The background property can be set on classes, ids or directly on the HTML element.

```
.background, #background, body{  
background:#AF9797 }
```

If only the background color should be changed can be used:

```
.background{ background-color:#AF9797 }
```

This example shows the color as background, it is applied via the CSS property "background".

To optimize and compress your CSS code, you can use our [online CSS compressor and optimizer](#) based on csstidy. If you want to create a linear or radial gradient as background or border, check our [CSS Gradient Generator](#).



Hey! You found this booklet interesting? Support Converting Colors with the new Membership Option!

The pro membership hides all ads, plus gives you double the colors in the color bucket, and more awesome pro features!

**[Learn more, Memberships starting at \\$2.50/m!](#)**

**Follow me  
on Twitter!**

@ConvertingColor