

# Converting Colors

Hex(AF9EA3)

Have a look what the booklet for  
Hex(AF9EA3) contains.

<b>Hex(AF9EA3)</b> .....	3
<i><b>Conversions</b></i> .....	4
<i><b>Details</b></i> .....	6
<i><b>Harmonies</b></i> .....	11
<i><b>Previews</b></i> .....	23
<i><b>Color Blindness Simulation</b></i> .....	26
<i><b>CSS Examples</b></i> .....	29

# **Color**

**Hex(AF9EA3)**

# Conversions

## Conversions Part 1

<b>Format</b>	<b>Color</b>
Hex	AF9EA3
RGB	175, 158, 163
RGB Percent	69%, 62%, 64%
CMY	0.3137, 0.3804, 0.3608
CMYK	0.00, 0.10, 0.07, 0.31
HSL	342°, 10%, 65%
HSV	342°, 10%, 69%
XYZ	36.5169, 36.2120, 39.7153
YIQ	163.6530, 8.5270, 5.1590

# Conversions

## Conversions Part 2

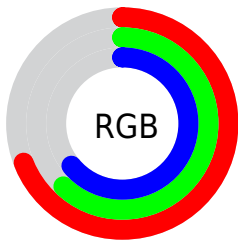
<b>Format</b>	<b>Color</b>
<b>RYB</b>	175, 158, 163
Decimal	11509411
CIELab	66.68, 7.10, -0.34
CIElCh	67, 7.109, 357.222
Yxy	36.2120, 0.3248, 0.3220
Android (android.graphics.Color)	4289699491 (0xFFAF9EA3)
YUV	163.6530, -0.3219, 9.9513
Hunter-Lab	60.1764, 3.0106, 2.9932

# Details

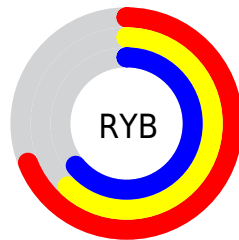
The Hex color **AF9EA3** is a light color, and the websafe version is hex **999999**. A complement of this color would be **9EAFAA**, and the grayscale version is **A4A4A4**.

A 20% lighter version of the original color is **E7D5DA**, and **7A6B6F** is the 20% darker color. If you saturate the color by 10%, you get **AF8D97**, and if you desaturate by 10%, it is **AFB0AF**.

# Distribution



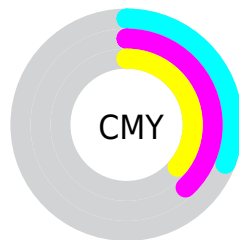
- Red (69%)
- Green (62%)
- Blue (64%)



- Red (69%)
- Yellow (62%)
- Blue (64%)



- Cyan (0%)
- Magenta (10%)
- Yellow (7%)
- Black (31%)



- Cyan (31%)
- Magenta (38%)
- Yellow (36%)

# Brightness & Saturation Gradients

These gradients show how the Hex color AF9EA3 changes by changing the brightness by 10 percent. The first figure shows a shift by +10% for each color and the second figure -10%.

Similar to the brightness gradients but the following saturation gradients show a change of the Hex color AF9EA3 by changing the saturation by 10% instead.





AF9EA3



AF9EA3

FFFFFF



948489



E7D5DA



7A6B6F



FFF1F6



625257



4A3B40



33262A



1E1115



000000



AF9EA3



AF9EA3



AF8D97



AFB0AF

 AF7B8A

 AFC1BC

 AF6A7E

 AFD3C8

 AF5872

 AFE4D4

 AF4765

 AFF6E1

 AF3559

 AFFFED

 AF244D

 AFFFF9

 AF1240

 AFFFFFF

 AF0134

# Harmonies

## Analogous

The Analogous color harmony consists of three colors that are next to each other on the color wheel.



AA9FA9



AF9EA3



B09E9D

# Triad

The Triadic color harmony groups three colors that are evenly spaced from another and form a triangle on the color wheel.



AF9EA3



A1A497



95A5AD

# Complementary

The Complementary color scheme is a pair of colors which are on the opposite of each other on the color wheel.



AF9EA3



9EAFAA

# Split Complementary

Split-complementary colors differ from the complementary color scheme. The scheme consists of three colors, the original color and two neighbors of the complement color.



93A6A8



AF9EA3



9AA59B

# Square

The Square scheme is like the rectangle color scheme, but the four colors are evenly spaced on the color wheel.



AF9EA3



A8A296



94A6A1



9BA3AF

# Rectangle

The Rectangle color scheme consists of four colors that form a rectangle on the color wheel.



AF9EA3



AF9F99



94A6A1



94A5AB

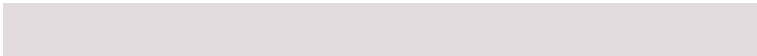


# Sweetspot

The Sweet Spot groups the original color and five complimentary colors.



AF9EA3



E3DCDE



AA9EAF



736E70



F2F2F2



737373



# Same Dimension

The Same Dimension uses a secret algorithm to generate beautiful new colors.



AF9EA3



E3C8D0



AFA19E



574E51



96002C



170007



# Inverse Universe

The Inverse Universe completely reimagines the original color for something new.



AF9EA3



E3C8D0



9EACAF



574E51



96002C

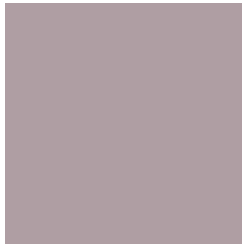


170007



# Previews

## White Background



This preview shows how the Hex color AF9EA3 looks on a white background.

## Color Contrast Check

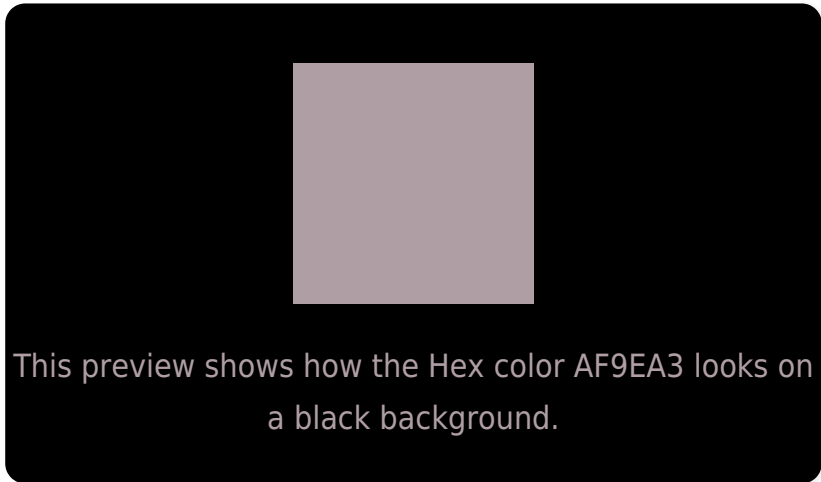
Large Text (above 18pt) WCAG AA × Fail

Any Text WCAG AA × Fail

Large Text (above 18pt) WCAG AAA × Fail

Any Text WCAG AAA × Fail

# Black Background



## Color Contrast Check

Large Text (above 18pt) WCAG AA ✓ Pass

Any Text WCAG AA ✓ Pass

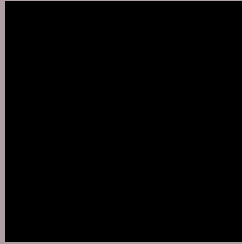
Large Text (above 18pt) WCAG AAA ✓ Pass

Any Text WCAG AAA ✓ Pass

If you want to check with other color combinations, try the [Color Contrast Checker](#).



## Hex AF9EA3 Background



This preview shows how black text looks on a background with the Hex color AF9EA3.



This preview shows how white text looks on a background with the Hex color AF9EA3.

# Color Blindness Simulation

Color vision deficiency is a very complex topic, and I could not describe the different causes any better than Wikipedia does, so if you want to learn more, you should check out their [article about color blindness](#).

## Dichromacy



**Original Color**  
AF9EA3

**Protanopia**  
A4A1A5

**Deuteranopia**  
B19DA3



**Tritanopia**  
B09DA9

# Trichromacy



**Original Color**  
AF9EA3

**Protanomaly**  
A8A0A4

**Deuteranomaly**  
B09DA3

**Tritanomaly**  
B09DA7

# Monochromacy



**Original Color**  
AF9EA3

**Achromatopsia**  
A4A4A4

**Achromatomaly**  
A8A2A4

# CSS Examples

## Text

The CSS property to change the color of the text to Hex AF9EA3 is called "color". The color property can be set on classes, ids or directly on the HTML element.

This example shows how text in the color #AF9EA3 looks like.

```
.text, #text, p{  
    color:#AF9EA3  
}
```

If you want to add a text shadow in that color use the text-shadow property, you can generate a text shadow directly with our [CSS Text Shadow Generator](#).

Here you see how black text with a 4 pixel #AF9EA3 colored shadow looks like.

```
.shadow{ text-shadow: 4px 4px 2px #AF9EA3  
}
```

## Border

The CSS property to change the border of an element to Hex AF9EA3 is called "border". The border property can be set on classes, ids or directly on the HTML element.

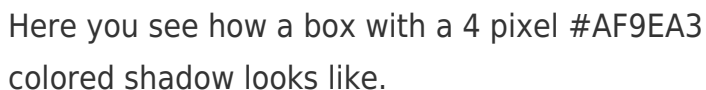
This example shows the color as border, it can be applied via the CSS property "border" or "border-color".

```
.border, #border, table{ border:4px solid  
#AF9EA3 }
```

If only the border color should be changed use the property `border-color`.

```
.border{ border-color:#AF9EA3 }
```

If you want to add a box shadow in that color use:



Here you see how a box with a 4 pixel `#AF9EA3` colored shadow looks like.

```
.boxshadow{ -moz-box-shadow:4px 4px 4px  
4px #AF9EA3; -webkit-box-shadow:4px 4px  
4px 4px #AF9EA3; box-shadow:4px 4px 4px  
4px #AF9EA3 }
```

# Background

The CSS property to change the background color of an element to Hex AF9EA3 is called "background". The background property can be set on classes, ids or directly on the HTML element.

```
.background, #background, body{  
background:#AF9EA3 }
```

If only the background color should be changed can be used:

```
.background{ background-color:#AF9EA3 }
```

This example shows the color as background, it is applied via the CSS property "background".

To optimize and compress your CSS code, you can use our [online CSS compressor and optimizer](#) based on csstidy. If you want to create a linear or radial gradient as background or border, check our [CSS Gradient Generator](#).



Hey! You found this booklet interesting? Support Converting Colors with the new Membership Option!

The pro membership hides all ads, plus gives you double the colors in the color bucket, and more awesome pro features!

**[Learn more, Memberships starting at \\$2.50/m!](#)**

**Follow me  
on Twitter!**

@ConvertingColor