

Converting Colors

Hex(AFA2AC)

Have a look what the booklet for
Hex(AFA2AC) contains.

Hex(AFA2AC)	3
<i>Conversions</i>	4
<i>Details</i>	6
<i>Harmonies</i>	11
<i>Previews</i>	23
<i>Color Blindness Simulation</i>	26
<i>CSS Examples</i>	29

Color

Hex(AFA2AC)

Conversions

Conversions Part 1

Format	Color
Hex	AFA2AC
RGB	175, 162, 172
RGB Percent	69%, 64%, 67%
CMY	0.3137, 0.3647, 0.3255
CMYK	0.00, 0.07, 0.02, 0.31
HSL	314°, 8%, 66%
HSV	314°, 7%, 69%
XYZ	38.0459, 37.9332, 44.3463
YIQ	167.0270, 4.5380, 5.8660

Conversions

Conversions Part 2

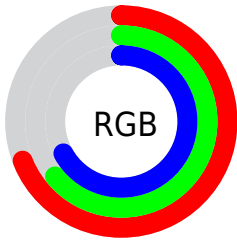
Format	Color
RYB	175, 162, 172
Decimal	11510444
CIELab	67.97, 6.55, -3.47
CIElCh	68, 7.409, 332.054
Yxy	37.9332, 0.3162, 0.3153
Android (android.graphics.Color)	4289700524 (0xFFAFA2AC)
YUV	167.0270, 2.4517, 6.9923
Hunter-Lab	61.5899, 2.4824, 0.4226

Details

The Hex color **AFA2AC** is a light color, and the websafe version is hex **999999**. A complement of this color would be **A2AFA5**, and the grayscale version is **A7A7A7**.

A 20% lighter version of the original color is **E7D9E3**, and **7B6E78** is the 20% darker color. If you saturate the color by 10%, you get **AF91A8**, and if you desaturate by 10%, it is **AFB3B0**.

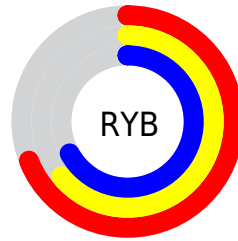
Distribution



Red (69%)

Green (64%)

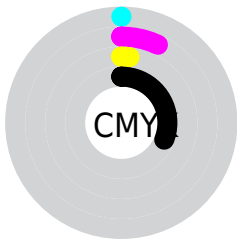
Blue (67%)



Red (69%)

Yellow (64%)

Blue (67%)

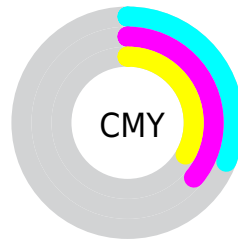


Cyan (0%)

Magenta (7%)

Yellow (2%)

Black (31%)



Cyan (31%)

Magenta (36%)

Yellow (33%)

Brightness & Saturation Gradients

These gradients show how the Hex color AFA2AC changes by changing the brightness by 10 percent. The first figure shows a shift by +10% for each color and the second figure -10%.

Similar to the brightness gradients but the following saturation gradients show a change of the Hex color AFA2AC by changing the saturation by 10% instead.

 AFA2AC

 AFA2AC

FFFFFF

 948891

 E7D9E3

 7B6E78

 FFF5FF

 62565F

 4A3F47

 332931

 1E151C

 000000

 AFA2AC

 AFA2AC

 AF91A8

 AFB3B0

 AF7FA4

 AFC5B4

 AF6EA0

 AFD6B8

 AF5C9C

 AFE8BC

 AF4B98

 AFFAC0

 AF3994

 AFFFC4

 AF2790

 AFFFC8

 AF168C

 AFFFCC

 AF0488

 AFFFD0

Harmonies

Analogous

The Analogous color harmony consists of three colors that are next to each other on the color wheel.



A8A4B1



AFA2AC



B4A1A5

Triad

The Triadic color harmony groups three colors that are evenly spaced from another and form a triangle on the color wheel.



AFA2AC



ABA598



95A9AC

Complementary

The Complementary color scheme is a pair of colors which are on the opposite of each other on the color wheel.



AFA2AC



A2AFA5

Split Complementary

Split-complementary colors differ from the complementary color scheme. The scheme consists of three colors, the original color and two neighbors of the complement color.



97AAA6



AFA2AC



A3A79A

Square

The Square scheme is like the rectangle color scheme, but the four colors are evenly spaced on the color wheel.



AFA2AC



B1A39A



9CA99F



99A8B1

Rectangle

The Rectangle color scheme consists of four colors that form a rectangle on the color wheel.



AFA2AC



B4A1A1



9CA99F



95AAAA

Sweetspot

The Sweet Spot groups the original color and five complimentary colors.



AFA2AC



E3DEE2



A5A2AF



737072



F2F2F2



737373

Same Dimension

The Same Dimension uses a secret algorithm to generate beautiful new colors.



AFA2AC



E3CFDE



AFA2A6



574E55



960074



170012

Inverse Universe

The Inverse Universe completely reimagines the original color for something new.



AFA2AC



E3CFDE



A2AFAB



574E55



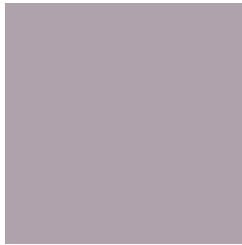
960074



170012

Previews

White Background



This preview shows how the Hex color AFA2AC looks on a white background.

Color Contrast Check

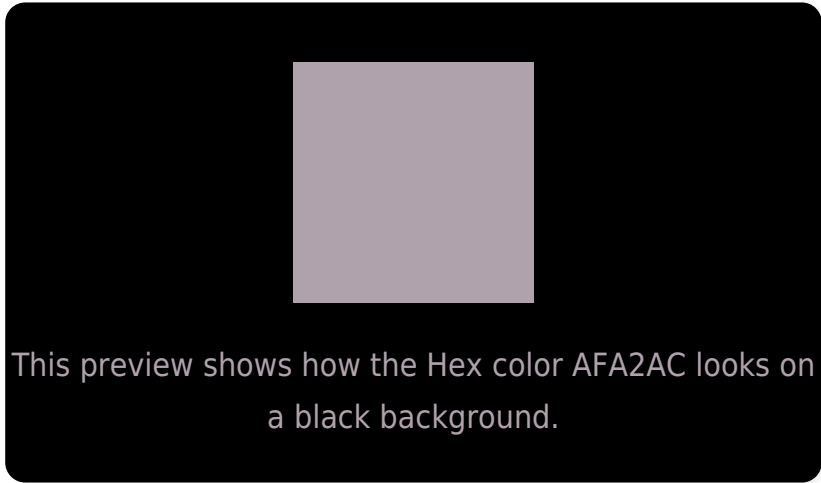
Large Text (above 18pt) WCAG AA × Fail

Any Text WCAG AA × Fail

Large Text (above 18pt) WCAG AAA × Fail

Any Text WCAG AAA × Fail

Black Background



Color Contrast Check

Large Text (above 18pt) WCAG AA ✓ Pass

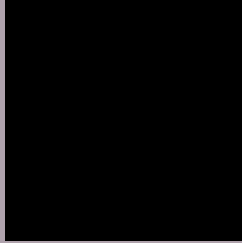
Any Text WCAG AA ✓ Pass

Large Text (above 18pt) WCAG AAA ✓ Pass

Any Text WCAG AAA ✓ Pass

If you want to check with other color combinations, try the [Color Contrast Checker](#).

Hex AFA2AC Background



This preview shows how black text looks on a background with the Hex color AFA2AC.



This preview shows how white text looks on a background with the Hex color AFA2AC.

Color Blindness Simulation

Color vision deficiency is a very complex topic, and I could not describe the different causes any better than Wikipedia does, so if you want to learn more, you should check out their [article about color blindness](#).

Dichromacy



Original Color
AFA2AC

Protanopia
A6A5AE

Deuteranopia
B3A1AC

Trichromacy



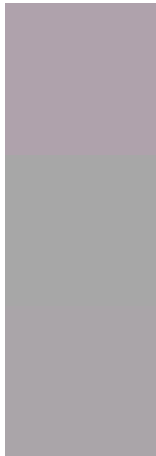
Original Color
AFA2AC

Protanomaly
A9A4AD

Deuteranomaly
B2A1AC

Tritanomaly
AFA2AD

Monochromacy



Original Color
AFA2AC

Achromatopsia
A7A7A7

Achromatomaly
AAA5A9

CSS Examples

Text

The CSS property to change the color of the text to Hex AFA2AC is called "color". The color property can be set on classes, ids or directly on the HTML element.

This example shows how text in the color #AFA2AC looks like.

```
.text, #text, p{  
    color:#AFA2AC  
}
```

If you want to add a text shadow in that color use the text-shadow property, you can generate a text shadow directly with our [CSS Text Shadow Generator](#).

Here you see how black text with a 4 pixel #AFA2AC colored shadow looks like.

```
.shadow{ text-shadow: 4px 4px 2px #AFA2AC
}
```

Border

The CSS property to change the border of an element to Hex AFA2AC is called "border". The border property can be set on classes, ids or directly on the HTML element.

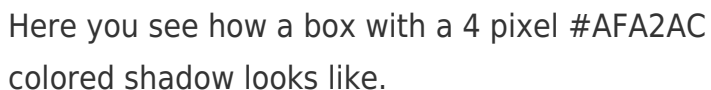
This example shows the color as border, it can be applied via the CSS property "border" or "border-color".

```
.border, #border, table{ border:4px solid
#AFA2AC }
```

If only the border color should be changed use the property `border-color`.

```
.border{ border-color:#AFA2AC }
```

If you want to add a box shadow in that color use:



Here you see how a box with a 4 pixel #AFA2AC colored shadow looks like.

```
.boxshadow{ -moz-box-shadow:4px 4px 4px  
4px #AFA2AC; -webkit-box-shadow:4px 4px  
4px 4px #AFA2AC; box-shadow:4px 4px 4px  
4px #AFA2AC }
```

Background

The CSS property to change the background color of an element to Hex AFA2AC is called "background". The background property can be set on classes, ids or directly on the HTML element.

```
.background, #background, body{  
background:#AFA2AC }
```

If only the background color should be changed can be used:

```
.background{ background-color:#AFA2AC }
```

This example shows the color as background, it is applied via the CSS property "background".

To optimize and compress your CSS code, you can use our [online CSS compressor and optimizer](#) based on csstidy. If you want to create a linear or radial gradient as background or border, check our [CSS Gradient Generator](#).

Hey! You found this booklet interesting? Support Converting Colors with the new Membership Option!

The pro membership hides all ads, plus gives you double the colors in the color bucket, and more awesome pro features!

[Learn more, Memberships starting at \\$2.50/m!](#)

**Follow me
on Twitter!**

@ConvertingColor