

# Converting Colors

Hex(B04C6D)

Have a look what the booklet for  
Hex(B04C6D) contains.

<b>Hex(B04C6D)</b> .....	3
<i><b>Conversions</b></i> .....	4
<i><b>Details</b></i> .....	6
<i><b>Harmonies</b></i> .....	11
<i><b>Previews</b></i> .....	23
<i><b>Color Blindness Simulation</b></i> .....	26
<i><b>CSS Examples</b></i> .....	29

# Color

**Hex(B04C6D)**

# Conversions

## Conversions Part 1

<b>Format</b>	<b>Color</b>
Hex	<a href="#">B04C6D</a>
RGB	<a href="#">176, 76, 109</a>
RGB Percent	<a href="#">69%, 30%, 43%</a>
CMY	<a href="#">0.3098, 0.7020, 0.5725</a>
<a href="#">CMYK</a>	<a href="#">0.00, 0.57, 0.38, 0.31</a>
HSL	<a href="#">340°, 40%, 49%</a>
HSV	<a href="#">340°, 57%, 69%</a>
XYZ	<a href="#">23.2493, 15.5031, 16.2350</a>
YIQ	<a href="#">109.6620, 49.0070, 31.4630</a>

# Conversions

## Conversions Part 2

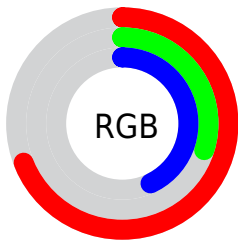
<b>Format</b>	<b>Color</b>
<b>R<sub>YB</sub></b>	176, 76, 109
Decimal	11553901
CIE <sub>Lab</sub>	46.32, 44.10, 1.39
CIE <sub>LCh</sub>	46, 44.119, 1.801
Yxy	15.5031, 0.4228, 0.2819
Android (android.graphics.Color)	4289743981 (0xFFB04C6D)
YUV	109.6620, -0.3264, 58.1784
Hunter-Lab	39.3740, 36.4948, 3.1148

# Details

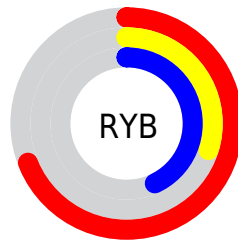
The Hex color **B04C6D** is a dark color, and the websafe version is hex **993366**. A complement of this color would be **4CB08F**, and the grayscale version is **6E6E6E**.

A 20% lighter version of the original color is **EA81A0**, and **78153E** is the 20% darker color. If you saturate the color by 10%, you get **B03A61**, and if you desaturate by 10%, it is **B05E79**.

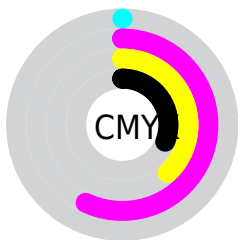
# Distribution



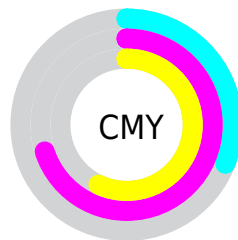
- Red (69%)
- Green (30%)
- Blue (43%)



- Red (69%)
- Yellow (30%)
- Blue (43%)



- Cyan (0%)
- Magenta (57%)
- Yellow (38%)
- Black (31%)



- Cyan (31%)
- Magenta (70%)
- Yellow (57%)

# Brightness & Saturation Gradients

These gradients show how the Hex color B04C6D changes by changing the brightness by 10 percent. The first figure shows a shift by +10% for each color and the second figure -10%.

Similar to the brightness gradients but the following saturation gradients show a change of the Hex color B04C6D by changing the saturation by 10% instead.



 B04C6D

 B04C6D

FFFFFF

 943255

 EA81A0

 78153E

 FF9CBB

 5C0028

 FFB7D7

 420014

 FFD4F3

 290001

 FFF1FF

 000000

 B04C6D

 B04C6D


 B03A61

 B05E79

 B02955

 B06F85

 B0174A

 B08190

 B0063E

 B0929C

 B0003A

 B0A4A8

 B0B6B4

 B0C7C0

 B0D9CB

 B0EAD7

# Harmonies

## Analogous

The Analogous color harmony consists of three colors that are next to each other on the color wheel.



9C5491



B04C6D



AF5149

# Triad

The Triadic color harmony groups three colors that are evenly spaced from another and form a triangle on the color wheel.



B04C6D



5A772B



007BAE

# Complementary

The Complementary color scheme is a pair of colors which are on the opposite of each other on the color wheel.



B04C6D



4CB08F

# Split Complementary

Split-complementary colors differ from the complementary color scheme. The scheme consists of three colors, the original color and two neighbors of the complement color.



007F94



B04C6D



227D49

# Square

The Square scheme is like the rectangle color scheme, but the four colors are evenly spaced on the color wheel.



B04C6D



806D1E



00806F



1A71B8

# Rectangle

The Rectangle color scheme consists of four colors that form a rectangle on the color wheel.



B04C6D



A55A34



00806F



007DA7



# Sweetspot

The Sweet Spot groups the original color and five complimentary colors.



B04C6D



E6BECB



8F4CB0



735C63



F2F2F2



737373



# Same Dimension

The Same Dimension uses a secret algorithm to generate beautiful new colors.



B04C6D



E6497D



B05D4C



595053



990032



1A0008



# Inverse Universe

The Inverse Universe completely reimagines the original color for something new.



B04C6D



E6497D



4C9FB0



595053



990032

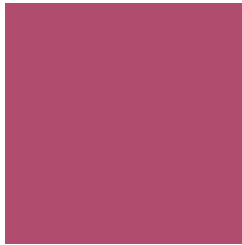


1A0008



# Previews

## White Background



This preview shows how the Hex color B04C6D looks on a white background.

## Color Contrast Check

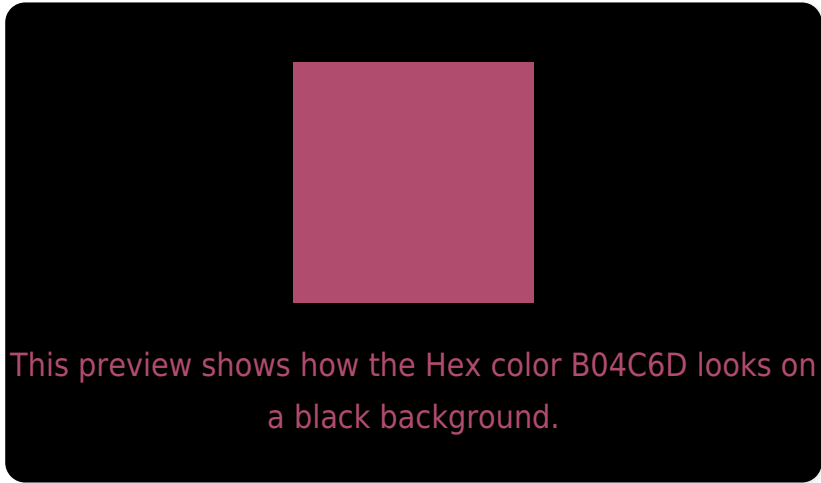
Large Text (above 18pt) WCAG AA ✓ Pass

Any Text WCAG AA ✓ Pass

Large Text (above 18pt) WCAG AAA ✓ Pass

Any Text WCAG AAA × Fail

# Black Background



## Color Contrast Check

Large Text (above 18pt) WCAG AA ✓ Pass

Any Text WCAG AA × Fail

Large Text (above 18pt) WCAG AAA × Fail

Any Text WCAG AAA × Fail

If you want to check with other color combinations, try the [Color Contrast Checker](#).



## Hex B04C6D Background



This preview shows how black text looks on a background with the Hex color B04C6D.



This preview shows how white text looks on a background with the Hex color B04C6D.

# Color Blindness Simulation

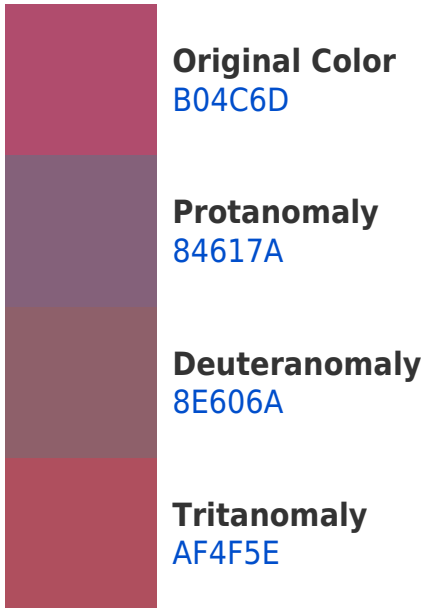
Color vision deficiency is a very complex topic, and I could not describe the different causes any better than Wikipedia does, so if you want to learn more, you should check out their [article about color blindness](#).

## Dichromacy





# Trichromacy



# Monochromacy



# CSS Examples

## Text

The CSS property to change the color of the text to Hex B04C6D is called "color". The color property can be set on classes, ids or directly on the HTML element.

This example shows how text in the color #B04C6D looks like.

```
.text, #text, p{  
    color:#B04C6D  
}
```

If you want to add a text shadow in that color use the text-shadow property, you can generate a text shadow directly with our [CSS Text Shadow Generator](#).

Here you see how black text with a 4 pixel #B04C6D colored shadow looks like.

```
.shadow{ text-shadow: 4px 4px 2px #B04C6D
}
```

## Border

The CSS property to change the border of an element to Hex B04C6D is called "border". The border property can be set on classes, ids or directly on the HTML element.

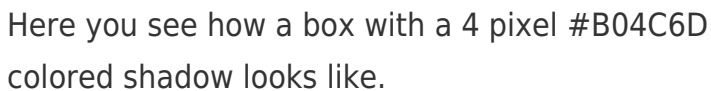
This example shows the color as border, it can be applied via the CSS property "border" or "border-color".

```
.border, #border, table{ border:4px solid
#B04C6D }
```

If only the border color should be changed use the property `border-color`.

```
.border{ border-color:#B04C6D }
```

If you want to add a box shadow in that color use:



Here you see how a box with a 4 pixel `#B04C6D` colored shadow looks like.

```
.boxshadow{ -moz-box-shadow:4px 4px 4px  
4px #B04C6D; -webkit-box-shadow:4px 4px  
4px 4px #B04C6D; box-shadow:4px 4px 4px  
4px #B04C6D }
```

# Background

The CSS property to change the background color of an element to Hex B04C6D is called "background". The background property can be set on classes, ids or directly on the HTML element.

```
.background, #background, body{  
background:#B04C6D }
```

If only the background color should be changed can be used:

```
.background{ background-color:#B04C6D }
```

This example shows the color as background, it is applied via the CSS property "background".

To optimize and compress your CSS code, you can use our [online CSS compressor and optimizer](#) based on csstidy. If you want to create a linear or radial gradient as background or border, check our [CSS Gradient Generator](#).



Hey! You found this booklet interesting? Support Converting Colors with the new Membership Option!

The pro membership hides all ads, plus gives you double the colors in the color bucket, and more awesome pro features!

**[Learn more, Memberships starting at \\$2.50/m!](#)**

**Follow me  
on Twitter!**

@ConvertingColor