

Converting Colors

Hex(B07988)

Have a look what the booklet for
Hex(B07988) contains.

Hex(B07988)	3
<i>Conversions</i>	4
<i>Details</i>	6
<i>Harmonies</i>	11
<i>Previews</i>	23
<i>Color Blindness Simulation</i>	26
<i>CSS Examples</i>	29

Color

Hex(B07988)

Conversions

Conversions Part 1

Format	Color
Hex	B07988
RGB	176, 121, 136
RGB Percent	69%, 47%, 53%
CMY	0.3098, 0.5255, 0.4667
CMYK	0.00, 0.31, 0.23, 0.31
HSL	344°, 26%, 58%
HSV	344°, 31%, 69%
XYZ	29.1858, 24.6824, 26.5185
YIQ	139.1550, 27.9650, 16.3250

Conversions

Conversions Part 2

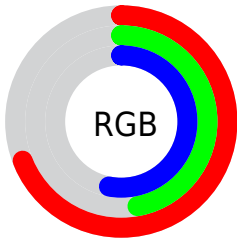
Format	Color
R_{YB}	176, 121, 136
Decimal	11565448
CIE _{Lab}	56.76, 23.68, 0.56
CIE _{LCh}	57, 23.690, 1.348
Yxy	24.6824, 0.3631, 0.3070
Android (android.graphics.Color)	4289755528 (0xFFB07988)
YUV	139.1550, -1.5554, 32.3131
Hunter-Lab	49.6814, 17.9190, 3.1297

Details

The Hex color **B07988** is a dark color, and the websafe version is hex **996666**. A complement of this color would be **79B0A1**, and the grayscale version is **8B8B8B**.

A 20% lighter version of the original color is **E9AEBD**, and **7A4856** is the 20% darker color. If you saturate the color by 10%, you get **B0677B**, and if you desaturate by 10%, it is **B08B95**.

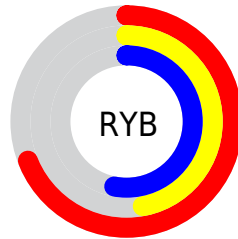
Distribution



Red (69%)

Green (47%)

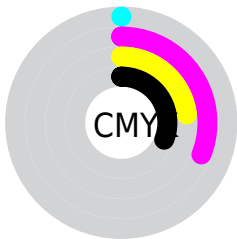
Blue (53%)



Red (69%)

Yellow (47%)

Blue (53%)

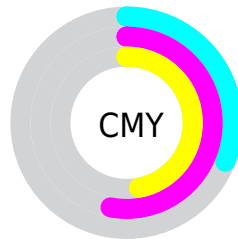


Cyan (0%)

Magenta (31%)

Yellow (23%)

Black (31%)



Cyan (31%)

Magenta (53%)

Yellow (47%)

Brightness & Saturation Gradients

These gradients show how the Hex color B07988 changes by changing the brightness by 10 percent. The first figure shows a shift by +10% for each color and the second figure -10%.

Similar to the brightness gradients but the following saturation gradients show a change of the Hex color B07988 by changing the saturation by 10% instead.

 B07988

 B07988

FFFFFF

 95606F

 E9AEBD

 7A4856

 FFC9D9

 60303F

 FFE6F5

 481A29

 300315

 150000

 000000

 B07988

 B07988

 B0677B

 B08B95

 B0566E

 B09CA2

 B04462

 B0AEAE

 B03355

 B0BFBB

 B02148

 B0D1C8

 B00F3B

 B0E3D5

 B00030

 B0F4E2

 B0FFEE

 B0FFFB

Harmonies

Analogous

The Analogous color harmony consists of three colors that are next to each other on the color wheel.



A37C9C



B07988



B17B74

Triad

The Triadic color harmony groups three colors that are evenly spaced from another and form a triangle on the color wheel.



B07988



808D65



5490AC

Complementary

The Complementary color scheme is a pair of colors which are on the opposite of each other on the color wheel.



B07988



79B0A1

Split Complementary

Split-complementary colors differ from the complementary color scheme. The scheme consists of three colors, the original color and two neighbors of the complement color.



48939D



B07988



689274

Square

The Square scheme is like the rectangle color scheme, but the four colors are evenly spaced on the color wheel.



B07988



96875F



539488



6F8AB1

Rectangle

The Rectangle color scheme consists of four colors that form a rectangle on the color wheel.



B07988



AC7E69



539488



4E91A8

Sweetspot

The Sweet Spot groups the original color and five complimentary colors.



B07988



E6D1D6



A079B0



73666A



F2F2F2



737373

Same Dimension

The Same Dimension uses a secret algorithm to generate beautiful new colors.



B07988



E68EA6



B08579



595053



99002A



1A0007

Inverse Universe

The Inverse Universe completely reimagines the original color for something new.



B07988



E68EA6



79A4B0



595053



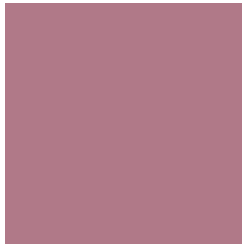
99002A



1A0007

Previews

White Background



This preview shows how the Hex color B07988 looks on a white background.

Color Contrast Check

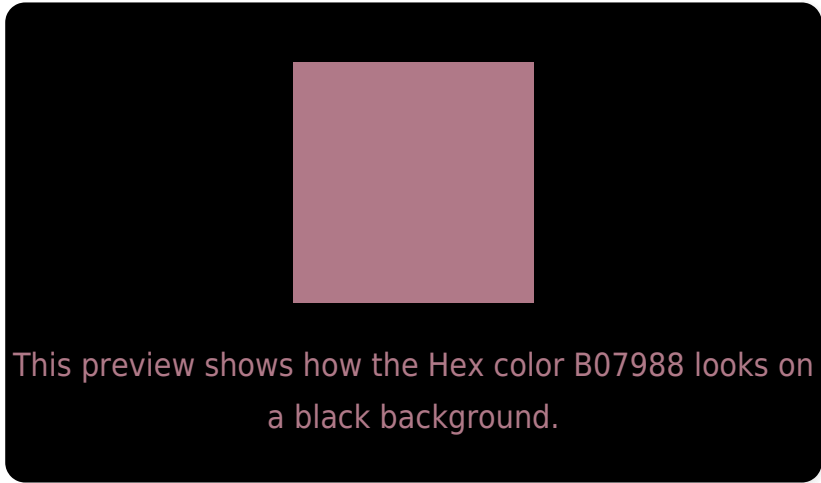
Large Text (above 18pt) WCAG AA ✓ Pass

Any Text WCAG AA ✗ Fail

Large Text (above 18pt) WCAG AAA ✗ Fail

Any Text WCAG AAA ✗ Fail

Black Background



Color Contrast Check

Large Text (above 18pt) WCAG AA ✓ Pass

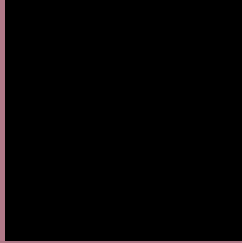
Any Text WCAG AA ✓ Pass

Large Text (above 18pt) WCAG AAA ✓ Pass

Any Text WCAG AAA × Fail

If you want to check with other color combinations, try the [Color Contrast Checker](#).

Hex B07988 Background



This preview shows how black text looks on a background with the Hex color B07988.

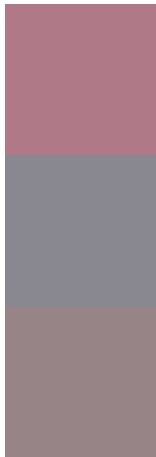


This preview shows how white text looks on a background with the Hex color B07988.

Color Blindness Simulation

Color vision deficiency is a very complex topic, and I could not describe the different causes any better than Wikipedia does, so if you want to learn more, you should check out their [article about color blindness](#).


Dichromacy



Original Color
B07988

Protanopia
898891

Deuteranopia
978486



Tritanopia
AF7A83

Trichromacy



Original Color
B07988

Protanomaly
97838E

Deuteranomaly
A08087

Tritanomaly
AF7A85

Monochromacy



Original Color
B07988

Achromatopsia
8B8B8B

Achromatomaly
98848A

CSS Examples

Text

The CSS property to change the color of the text to Hex B07988 is called "color". The color property can be set on classes, ids or directly on the HTML element.

This example shows how text in the color #B07988 looks like.

```
.text, #text, p{  
    color:#B07988  
}
```

If you want to add a text shadow in that color use the text-shadow property, you can generate a text shadow directly with our [CSS Text Shadow Generator](#).

Here you see how black text with a 4 pixel #B07988 colored shadow looks like.

```
.shadow{ text-shadow: 4px 4px 2px #B07988
}
```

Border

The CSS property to change the border of an element to Hex B07988 is called "border". The border property can be set on classes, ids or directly on the HTML element.

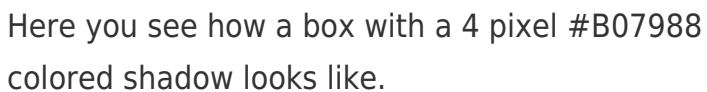
This example shows the color as border, it can be applied via the CSS property "border" or "border-color".

```
.border, #border, table{ border:4px solid
#B07988 }
```

If only the border color should be changed use the property `border-color`.

```
.border{ border-color:#B07988 }
```

If you want to add a box shadow in that color use:



Here you see how a box with a 4 pixel `#B07988` colored shadow looks like.

```
.boxshadow{ -moz-box-shadow:4px 4px 4px  
4px #B07988; -webkit-box-shadow:4px 4px  
4px 4px #B07988; box-shadow:4px 4px 4px  
4px #B07988 }
```

Background

The CSS property to change the background color of an element to Hex B07988 is called "background". The background property can be set on classes, ids or directly on the HTML element.

```
.background, #background, body{  
background:#B07988 }
```

If only the background color should be changed can be used:

```
.background{ background-color:#B07988 }
```

This example shows the color as background, it is applied via the CSS property "background".

To optimize and compress your CSS code, you can use our [online CSS compressor and optimizer](#) based on csstidy. If you want to create a linear or radial gradient as background or border, check our [CSS Gradient Generator](#).

Hey! You found this booklet interesting? Support Converting Colors with the new Membership Option!

The pro membership hides all ads, plus gives you double the colors in the color bucket, and more awesome pro features!

[Learn more, Memberships starting at \\$2.50/m!](#)

**Follow me
on Twitter!**

@ConvertingColor