

Converting Colors

Hex(B0825C)

Have a look what the booklet for
Hex(B0825C) contains.

Hex(B0825C)	3
<i>Conversions</i>	4
<i>Details</i>	6
<i>Harmonies</i>	11
<i>Previews</i>	23
<i>Color Blindness Simulation</i>	26
<i>CSS Examples</i>	29

Color

Hex(B0825C)

Conversions

Conversions Part 1

Format	Color
Hex	B0825C
RGB	176, 130, 92
RGB Percent	69%, 51%, 36%
CMY	0.3098, 0.4902, 0.6392
CMYK	0.00, 0.26, 0.48, 0.31
HSL	27°, 35%, 53%
HSV	27°, 48%, 69%
XYZ	27.8189, 25.9681, 13.6713
YIQ	139.4220, 39.6140, -2.0660

Conversions

Conversions Part 2

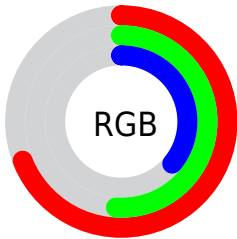
Format	Color
RYB	176, 161, 92
Decimal	11567708
CIELab	58.01, 12.98, 27.45
CIELCh	58, 30.363, 64.693
Yxy	25.9681, 0.4124, 0.3849
Android (android.graphics.Color)	4289757788 (0xFFB0825C)
YUV	139.4220, -23.3790, 32.0789
Hunter-Lab	50.9589, 8.2667, 19.7648

Details

The Hex color **B0825C** is a dark color, and the websafe version is hex **CC9966**. A complement of this color would be **5C8AB0**, and the grayscale version is **8C8C8C**.

A 20% lighter version of the original color is **E9B78F**, and **79512D** is the 20% darker color. If you saturate the color by 10%, you get **B0784A**, and if you desaturate by 10%, it is **B08C6E**.

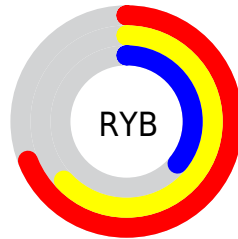
Distribution



Red (69%)

Green (51%)

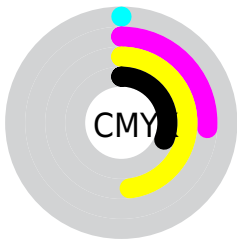
Blue (36%)



Red (69%)

Yellow (63%)

Blue (36%)

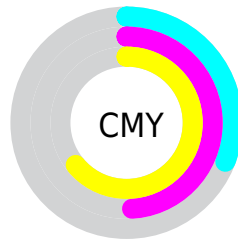


Cyan (0%)

Magenta (26%)

Yellow (48%)

Black (31%)



Cyan (31%)

Magenta (49%)

Yellow (64%)

Brightness & Saturation Gradients

These gradients show how the Hex color B0825C changes by changing the brightness by 10 percent. The first figure shows a shift by +10% for each color and the second figure -10%.

Similar to the brightness gradients but the following saturation gradients show a change of the Hex color B0825C by changing the saturation by 10% instead.

 B0825C

 B0825C

FFFFFF

 946944

 E9B78F

 79512D

 FFD3A9

 5F3A17

 FFEFC5

 452400


 FFFFE1

 2C1000

FFFFFFE

 0B0000

 000000

 B0825C

 B0825C

 B0784A

 B08C6E

 B06F39

 B0957F

 B06527

 B09F91

 B05B16

 B0A9A2

 B05204

 B0B2B4

 B05000

 B0BCC6

 B0C5D7

 B0CFE9

 B0D9FA

Harmonies

Analogous

The Analogous color harmony consists of three colors that are next to each other on the color wheel.



BE7A6E



B0825C



998B56

Triad

The Triadic color harmony groups three colors that are evenly spaced from another and form a triangle on the color wheel.



B0825C



3C9A8F



9483B7

Complementary

The Complementary color scheme is a pair of colors which are on the opposite of each other on the color wheel.



B0825C



5C8AB0

Split Complementary

Split-complementary colors differ from the complementary color scheme. The scheme consists of three colors, the original color and two neighbors of the complement color.



6D8DC0



B0825C



2899A9

Square

The Square scheme is like the rectangle color scheme, but the four colors are evenly spaced on the color wheel.



B0825C



5D9874



4294BB



B07BA3

Rectangle

The Rectangle color scheme consists of four colors that form a rectangle on the color wheel.



B0825C



87915A



4294BB



8886BC

Sweetspot

The Sweet Spot groups the original color and five complimentary colors.



B0825C



E6D4C5



B05C8A



73685F



F2F2F2



737373

Same Dimension

The Same Dimension uses a secret algorithm to generate beautiful new colors.



B0825C



E69E63



B0AC5C



595450



994500



1A0C00

Inverse Universe

The Inverse Universe completely reimagines the original color for something new.



5C8AB0



63AAE6



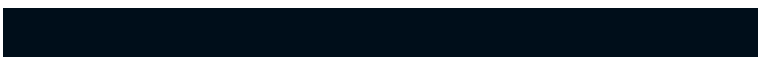
5C60B0



505559



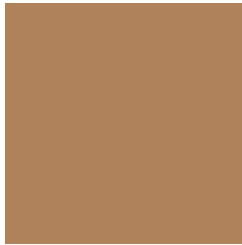
005499



000E1A

Previews

White Background



This preview shows how the Hex color B0825C looks on a white background.

Color Contrast Check

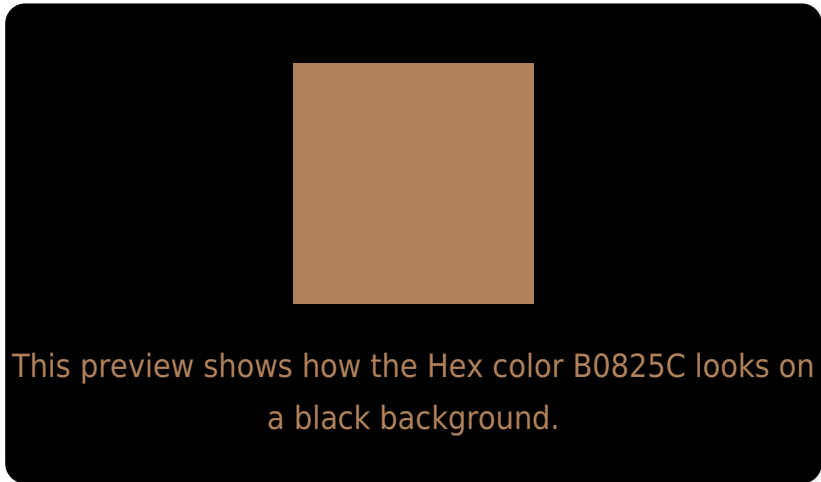
Large Text (above 18pt) WCAG AA ✓ Pass

Any Text WCAG AA × Fail

Large Text (above 18pt) WCAG AAA × Fail

Any Text WCAG AAA × Fail

Black Background



Color Contrast Check

Large Text (above 18pt) WCAG AA ✓ Pass

Any Text WCAG AA ✓ Pass

Large Text (above 18pt) WCAG AAA ✓ Pass

Any Text WCAG AAA × Fail

If you want to check with other color combinations, try the [Color Contrast Checker](#).

Hex B0825C Background



This preview shows how black text looks on a background with the Hex color B0825C.




This preview shows how white text looks on a background with the Hex color B0825C.

Color Blindness Simulation

Color vision deficiency is a very complex topic, and I could not describe the different causes any better than Wikipedia does, so if you want to learn more, you should check out their [article about color blindness](#).

Dichromacy





Tritanopia
B47D86

Trichromacy



Original Color
B0825C

Protanomaly
A0885F

Deuteranomaly
AB855B

Tritanomaly
B37F77

Monochromacy



Original Color
B0825C

Achromatopsia
8B8B8B

Achromatomaly
98887A

CSS Examples

Text

The CSS property to change the color of the text to Hex B0825C is called "color". The color property can be set on classes, ids or directly on the HTML element.

This example shows how text in the color #B0825C looks like.

```
.text, #text, p{  
    color:#B0825C  
}
```

If you want to add a text shadow in that color use the text-shadow property, you can generate a text shadow directly with our [CSS Text Shadow Generator](#).

Here you see how black text with a 4 pixel #B0825C colored shadow looks like.

```
.shadow{ text-shadow: 4px 4px 2px #B0825C
}
```

Border

The CSS property to change the border of an element to Hex B0825C is called "border". The border property can be set on classes, ids or directly on the HTML element.

This example shows the color as border, it can be applied via the CSS property "border" or "border-color".

```
.border, #border, table{ border:4px solid
#B0825C }
```

If only the border color should be changed use the property `border-color`.

```
.border{ border-color:#B0825C }
```

If you want to add a box shadow in that color use:

Here you see how a box with a 4 pixel #B0825C colored shadow looks like.

```
.boxshadow{ -moz-box-shadow:4px 4px 4px  
4px #B0825C; -webkit-box-shadow:4px 4px  
4px 4px #B0825C; box-shadow:4px 4px 4px  
4px #B0825C }
```

Background

The CSS property to change the background color of an element to Hex B0825C is called "background". The background property can be set on classes, ids or directly on the HTML element.

```
.background, #background, body{  
background:#B0825C }
```

If only the background color should be changed can be used:

```
.background{ background-color:#B0825C }
```

This example shows the color as background, it is applied via the CSS property "background".

To optimize and compress your CSS code, you can use our [online CSS compressor and optimizer](#) based on csstidy. If you want to create a linear or radial gradient as background or border, check our [CSS Gradient Generator](#).

Hey! You found this booklet interesting? Support Converting Colors with the new Membership Option!

The pro membership hides all ads, plus gives you double the colors in the color bucket, and more awesome pro features!

[Learn more, Memberships starting at \\$2.50/m!](#)

**Follow me
on Twitter!**

@ConvertingColor