

Converting Colors

Hex(B0888C)

Have a look what the booklet for
Hex(B0888C) contains.

Hex(B0888C)	3
<i>Conversions</i>	4
<i>Details</i>	6
<i>Harmonies</i>	11
<i>Previews</i>	23
<i>Color Blindness Simulation</i>	26
<i>CSS Examples</i>	29

Color

Hex(B0888C)

Conversions

Conversions Part 1

Format	Color
Hex	B0888C
RGB	176, 136, 140
RGB Percent	69%, 53%, 55%
CMY	0.3098, 0.4667, 0.4510
CMYK	0.00, 0.23, 0.20, 0.31
HSL	354°, 20%, 61%
HSV	354°, 23%, 69%
XYZ	31.4423, 28.7319, 28.6996
YIQ	148.4160, 22.5560, 9.7240

Conversions

Conversions Part 2

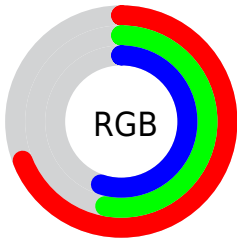
Format	Color
R_{YB}	176, 136, 140
Decimal	11569292
CIE _{Lab}	60.54, 15.87, 3.74
CIE _{LCh}	61, 16.305, 13.258
Yxy	28.7319, 0.3538, 0.3233
Android (android.graphics.Color)	4289759372 (0xFFB0888C)
YUV	148.4160, -4.1491, 24.1912
Hunter-Lab	53.6021, 10.9020, 5.7765

Details

The Hex color **B0888C** is a light color, and the websafe version is hex **CC9999**. A complement of this color would be **88B0AC**, and the grayscale version is **949494**.

A 20% lighter version of the original color is **E8BDC1**, and **7B565A** is the 20% darker color. If you saturate the color by 10%, you get **B0767C**, and if you desaturate by 10%, it is **B09A9C**.

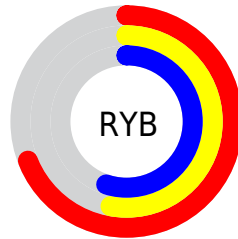
Distribution



Red (69%)

Green (53%)

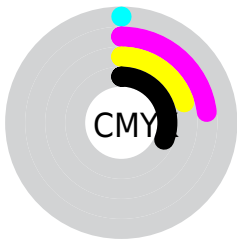
Blue (55%)



Red (69%)

Yellow (53%)

Blue (55%)

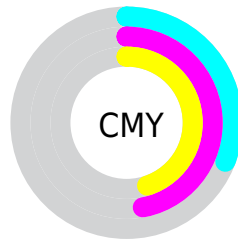


Cyan (0%)

Magenta (23%)

Yellow (20%)

Black (31%)



Cyan (31%)

Magenta (47%)


Yellow (45%)

Brightness & Saturation Gradients

These gradients show how the Hex color B0888C changes by changing the brightness by 10 percent. The first figure shows a shift by +10% for each color and the second figure -10%.

Similar to the brightness gradients but the following saturation gradients show a change of the Hex color B0888C by changing the saturation by 10% instead.

 B0888C

 B0888C

FFFFFF

 956F73

 E8BDC1


 7B565A

 FFD9DD

 613F43

 FFF6FA

 49282D

 311318

 1F0000

 000000

 B0888C

 B0888C

 B0767C

 B09A9C

 B0656C

 B0ABAC

 B0535C

 B0BDBC

 B0424D

 B0CECB

 B0303D

 B0E0DB

 B01E2D

 B0F2EB

 B00D1D

 B0FFFF

 B00012

 B0FFFF

Harmonies

Analogous

The Analogous color harmony consists of three colors that are next to each other on the color wheel.



AA899B



B0888C



AE8A7F

Triad

The Triadic color harmony groups three colors that are evenly spaced from another and form a triangle on the color wheel.



B0888C



86977D



7896AD

Complementary

The Complementary color scheme is a pair of colors which are on the opposite of each other on the color wheel.



B0888C



88B0AC

Split Complementary

Split-complementary colors differ from the complementary color scheme. The scheme consists of three colors, the original color and two neighbors of the complement color.



6D99A5



B0888C



779A89

Square

The Square scheme is like the rectangle color scheme, but the four colors are evenly spaced on the color wheel.



B0888C



979376



6D9A98



8A91AE

Rectangle

The Rectangle color scheme consists of four colors that form a rectangle on the color wheel.



B0888C



A88D79



6D9A98



7397AB

Sweetspot

The Sweet Spot groups the original color and five complimentary colors.



B0888C



E6D5D7



AC88B0



736A6A



F2F2F2



737373

Same Dimension

The Same Dimension uses a secret algorithm to generate beautiful new colors.



B0888C



E6A8AE



B09888



595051



99000F



1A0003

Inverse Universe

The Inverse Universe completely reimagines the original color for something new.



B0888C



E6A8AE



88A0B0



595051



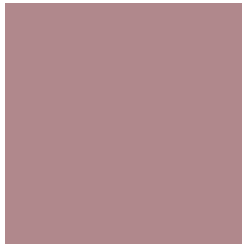
99000F



1A0003

Previews

White Background



This preview shows how the Hex color B0888C looks on a white background.

Color Contrast Check

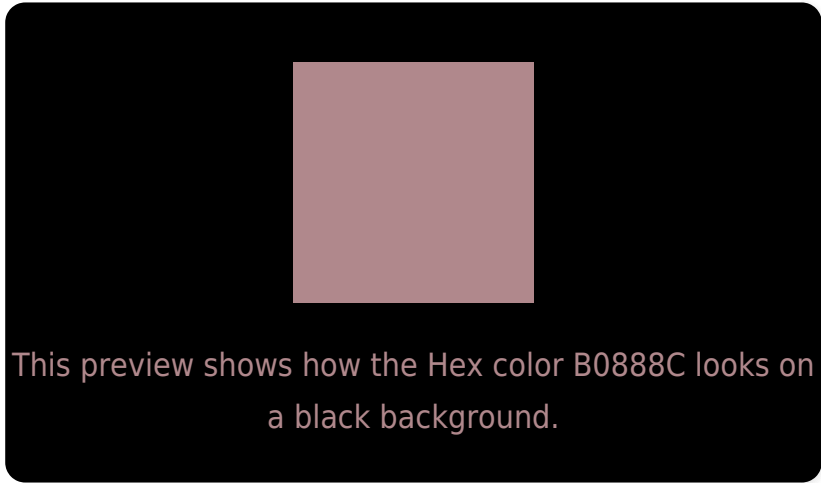
Large Text (above 18pt) WCAG AA ✓ Pass

Any Text WCAG AA ✗ Fail

Large Text (above 18pt) WCAG AAA ✗ Fail

Any Text WCAG AAA ✗ Fail

Black Background



Color Contrast Check

Large Text (above 18pt) WCAG AA ✓ Pass

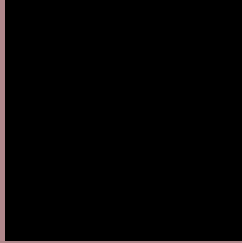
Any Text WCAG AA ✓ Pass

Large Text (above 18pt) WCAG AAA ✓ Pass

Any Text WCAG AAA × Fail

If you want to check with other color combinations, try the [Color Contrast Checker](#).

Hex B0888C Background



This preview shows how black text looks on a background with the Hex color B0888C.



This preview shows how white text looks on a background with the Hex color B0888C.

Color Blindness Simulation

Color vision deficiency is a very complex topic, and I could not describe the different causes any better than Wikipedia does, so if you want to learn more, you should check out their [article about color blindness](#).

Dichromacy



Original Color
B0888C

Protanopia
959291

Deuteranopia
A38D8B



Tritanopia
B18792

Trichromacy



Original Color
B0888C

Protanomaly
9F8E8F

Deuteranomaly
A88B8B

Tritanomaly
B18790

Monochromacy



Original Color
B0888C

Achromatopsia
949494

Achromatomaly
9E9091

CSS Examples

Text

The CSS property to change the color of the text to Hex B0888C is called "color". The color property can be set on classes, ids or directly on the HTML element.

This example shows how text in the color #B0888C looks like.

```
.text, #text, p{  
    color:#B0888C  
}
```

If you want to add a text shadow in that color use the text-shadow property, you can generate a text shadow directly with our [CSS Text Shadow Generator](#).

Here you see how black text with a 4 pixel #B0888C colored shadow looks like.

```
.shadow{ text-shadow: 4px 4px 2px #B0888C
}
```

Border

The CSS property to change the border of an element to Hex B0888C is called "border". The border property can be set on classes, ids or directly on the HTML element.

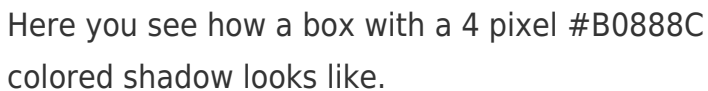
This example shows the color as border, it can be applied via the CSS property "border" or "border-color".

```
.border, #border, table{ border:4px solid
#B0888C }
```

If only the border color should be changed use the property `border-color`.

```
.border{ border-color:#B0888C }
```

If you want to add a box shadow in that color use:



Here you see how a box with a 4 pixel #B0888C colored shadow looks like.

```
.boxshadow{ -moz-box-shadow:4px 4px 4px  
4px #B0888C; -webkit-box-shadow:4px 4px  
4px 4px #B0888C; box-shadow:4px 4px 4px  
4px #B0888C }
```

Background

The CSS property to change the background color of an element to Hex B0888C is called "background". The background property can be set on classes, ids or directly on the HTML element.

```
.background, #background, body{  
background:#B0888C }
```

If only the background color should be changed can be used:

```
.background{ background-color:#B0888C }
```

This example shows the color as background, it is applied via the CSS property "background".

To optimize and compress your CSS code, you can use our [online CSS compressor and optimizer](#) based on csstidy. If you want to create a linear or radial gradient as background or border, check our [CSS Gradient Generator](#).

Hey! You found this booklet interesting? Support Converting Colors with the new Membership Option!

The pro membership hides all ads, plus gives you double the colors in the color bucket, and more awesome pro features!

[Learn more, Memberships starting at \\$2.50/m!](#)

**Follow me
on Twitter!**

@ConvertingColor