

# Converting Colors

Hex(B08B64)

Have a look what the booklet for  
Hex(B08B64) contains.

<b>Hex(B08B64)</b> .....	3
<i><b>Conversions</b></i> .....	4
<i><b>Details</b></i> .....	6
<i><b>Harmonies</b></i> .....	11
<i><b>Previews</b></i> .....	23
<i><b>Color Blindness Simulation</b></i> .....	26
<i><b>CSS Examples</b></i> .....	29

**Color**

**Hex(B08B64)**

# Conversions

## Conversions Part 1

<b>Format</b>	<b>Color</b>
Hex	B08B64
RGB	176, 139, 100
RGB Percent	69%, 55%, 39%
CMY	0.3098, 0.4549, 0.6078
CMYK	0.00, 0.21, 0.43, 0.31
HSL	31°, 32%, 54%
HSV	31°, 43%, 69%
XYZ	29.4374, 28.6154, 16.0284
YIQ	145.6170, 34.5710, -4.2850

# Conversions

## Conversions Part 2

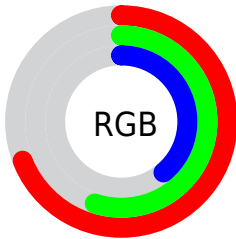
<b>Format</b>	<b>Color</b>
<b>R<sub>YB</sub></b>	172, 176, 100
Decimal	11570020
CIE Lab	60.44, 8.80, 26.19
CIE LCh	60, 27.632, 71.419
Yxy	28.6154, 0.3974, 0.3863
Android (android.graphics.Color)	4289760100 (0xFFB08B64)
YUV	145.6170, -22.4892, 26.6459
Hunter-Lab	53.4934, 4.6149, 19.6801

# Details

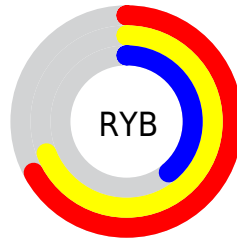
The Hex color **B08B64** is a dark color, and the websafe version is hex **CC9966**. A complement of this color would be **6489B0**, and the grayscale version is **929292**.

A 20% lighter version of the original color is **E9C097**, and **7A5935** is the 20% darker color. If you saturate the color by 10%, you get **B08252**, and if you desaturate by 10%, it is **B09476**.

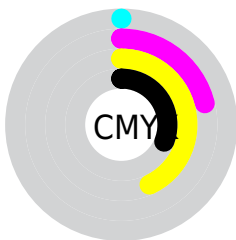
# Distribution



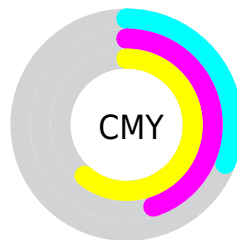
- Red (69%)
- Green (55%)
- Blue (39%)



- Red (67%)
- Yellow (69%)
- Blue (39%)



- Cyan (0%)
- Magenta (21%)
- Yellow (43%)
- Black (31%)



- Cyan (31%)
- Magenta (45%)
- Yellow (61%)

# Brightness & Saturation Gradients

These gradients show how the Hex color B08B64 changes by changing the brightness by 10 percent. The first figure shows a shift by +10% for each color and the second figure -10%.

Similar to the brightness gradients but the following saturation gradients show a change of the Hex color B08B64 by changing the saturation by 10% instead.



 B08B64

 B08B64

FFFFFF

 94724C

 E9C097

 7A5935

 FFDCB2

 5F421E

 FFF9CE

 462C08

 FFFFEA

 2E1700

 150000

 000000

 B08B64

 B08B64

 B08252

 B09476

 B07A41

 B09C87

 B0712F

 B0A599

 B0691E

 B0ADAA

 B0600C

 B0B6BC

 B05A00

 B0BECE

 B0C7DF

 B0D0F1

 B0D8FF

# Harmonies

## Analogous

The Analogous color harmony consists of three colors that are next to each other on the color wheel.



BF8373



B08B64



999362

# Triad

The Triadic color harmony groups three colors that are evenly spaced from another and form a triangle on the color wheel.



B08B64



499F9A



A188B6

# Complementary

The Complementary color scheme is a pair of colors which are on the opposite of each other on the color wheel.



B08B64



6489B0

# Split Complementary

Split-complementary colors differ from the complementary color scheme. The scheme consists of three colors, the original color and two neighbors of the complement color.



7F91C1



B08B64



439DB1

# Square

The Square scheme is like the rectangle color scheme, but the four colors are evenly spaced on the color wheel.



B08B64



629E81



5B98BF



B881A2

# Rectangle

The Rectangle color scheme consists of four colors that form a rectangle on the color wheel.



B08B64



889868



5B98BF



978BBB



# Sweetspot

The Sweet Spot groups the original color and five complimentary colors.



B08B64



E6D7C8



B0648A



736A60



F2F2F2



737373



# Same Dimension

The Same Dimension uses a secret algorithm to generate beautiful new colors.



B08B64



E6AB6E



B0B064



595550



994F00



1A0D00



# Inverse Universe

The Inverse Universe completely reimagines the original color for something new.



6489B0



6EA8E6



6464B0



505559



004A99

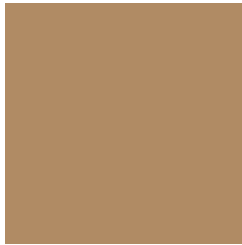


000C1A



# Previews

## White Background



This preview shows how the Hex color B08B64 looks on a white background.

## Color Contrast Check

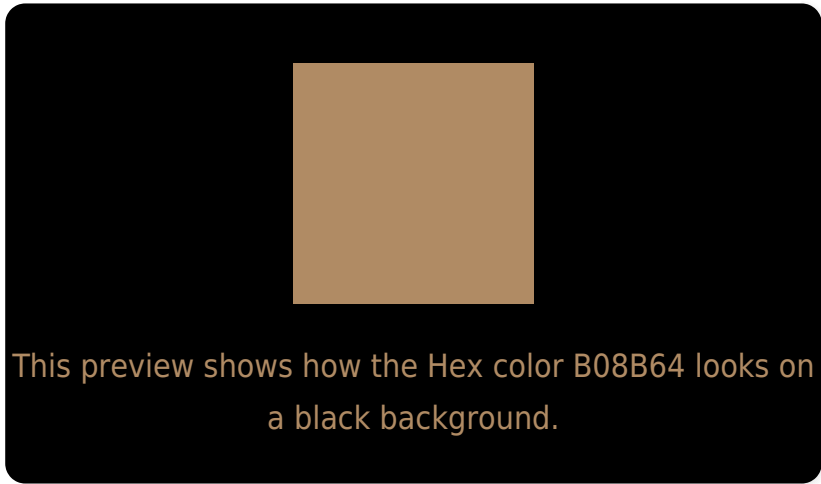
Large Text (above 18pt) WCAG AA ✓ Pass

Any Text WCAG AA × Fail

Large Text (above 18pt) WCAG AAA × Fail

Any Text WCAG AAA × Fail

# Black Background



## Color Contrast Check

Large Text (above 18pt) WCAG AA ✓ Pass

Any Text WCAG AA ✓ Pass

Large Text (above 18pt) WCAG AAA ✓ Pass

Any Text WCAG AAA × Fail

If you want to check with other color combinations, try the [Color Contrast Checker](#).



## Hex B08B64 Background



This preview shows how black text looks on a background with the Hex color B08B64.



This preview shows how white text looks on a background with the Hex color B08B64.

# Color Blindness Simulation

Color vision deficiency is a very complex topic, and I could not describe the different causes any better than Wikipedia does, so if you want to learn more, you should check out their [article about color blindness](#).


## Dichromacy



**Original Color**  
B08B64

**Protanopia**  
9D9267

**Deuteranopia**  
AE8C64



**Tritanopia**  
B48590

# Trichromacy



**Original Color**  
B08B64

**Protanomaly**  
A48F66

**Deuteranomaly**  
AF8C64

**Tritanomaly**  
B38780

# Monochromacy



**Original Color**  
B08B64

**Achromatopsia**  
929292

**Achromatomaly**  
9D8F81

# CSS Examples

## Text

The CSS property to change the color of the text to Hex B08B64 is called "color". The color property can be set on classes, ids or directly on the HTML element.

This example shows how text in the color #B08B64 looks like.

```
.text, #text, p{  
    color:#B08B64  
}
```

If you want to add a text shadow in that color use the text-shadow property, you can generate a text shadow directly with our [CSS Text Shadow Generator](#).

Here you see how black text with a 4 pixel #B08B64 colored shadow looks like.

```
.shadow{ text-shadow: 4px 4px 2px #B08B64
}
```

## Border

The CSS property to change the border of an element to Hex B08B64 is called "border". The border property can be set on classes, ids or directly on the HTML element.

This example shows the color as border, it can be applied via the CSS property "border" or "border-color".

```
.border, #border, table{ border:4px solid
#B08B64 }
```

If only the border color should be changed use the property `border-color`.

```
.border{ border-color:#B08B64 }
```

If you want to add a box shadow in that color use:

Here you see how a box with a 4 pixel #B08B64 colored shadow looks like.

```
.boxshadow{ -moz-box-shadow:4px 4px 4px  
4px #B08B64; -webkit-box-shadow:4px 4px  
4px 4px #B08B64; box-shadow:4px 4px 4px  
4px #B08B64 }
```

# Background

The CSS property to change the background color of an element to Hex B08B64 is called "background". The background property can be set on classes, ids or directly on the HTML element.

```
.background, #background, body{  
background:#B08B64 }
```

If only the background color should be changed can be used:

```
.background{ background-color:#B08B64 }
```

This example shows the color as background, it is applied via the CSS property "background".

To optimize and compress your CSS code, you can use our [online CSS compressor and optimizer](#) based on csstidy. If you want to create a linear or radial gradient as background or border, check our [CSS Gradient Generator](#).



Hey! You found this booklet interesting? Support Converting Colors with the new Membership Option!

The pro membership hides all ads, plus gives you double the colors in the color bucket, and more awesome pro features!

**[Learn more, Memberships starting at \\$2.50/m!](#)**

**Follow me  
on Twitter!**

@ConvertingColor