

Converting Colors

Hex(B08F6C)

Have a look what the booklet for
Hex(B08F6C) contains.

Hex(B08F6C)	3
<i>Conversions</i>	4
<i>Details</i>	6
<i>Harmonies</i>	11
<i>Previews</i>	23
<i>Color Blindness Simulation</i>	26
<i>CSS Examples</i>	29

Color

Hex(B08F6C)

Conversions

Conversions Part 1

Format	Color
Hex	B08F6C
RGB	176, 143, 108
RGB Percent	69%, 56%, 42%
CMY	0.3098, 0.4392, 0.5765
CMYK	0.00, 0.19, 0.39, 0.31
HSL	31°, 30%, 56%
HSV	31°, 39%, 69%
XYZ	30.4337, 29.9577, 18.3657
YIQ	148.8770, 30.9030, -3.8890

Conversions

Conversions Part 2

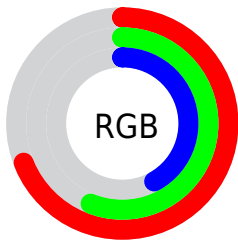
Format	Color
R_{YB}	172, 176, 108
Decimal	11571052
CIE Lab	61.62, 7.51, 23.32
CIE LCh	62, 24.498, 72.158
Yxy	29.9577, 0.3864, 0.3804
Android (android.graphics.Color)	4289761132 (0xFFB08F6C)
YUV	148.8770, -20.1524, 23.7869
Hunter-Lab	54.7337, 3.4680, 18.4189

Details

The Hex color **B08F6C** is a dark color, and the websafe version is hex **CC9966**. A complement of this color would be **6C8DB0**, and the grayscale version is **959595**.

A 20% lighter version of the original color is **E9C5A0**, and **7A5D3C** is the 20% darker color. If you saturate the color by 10%, you get **B0865A**, and if you desaturate by 10%, it is **B0987E**.

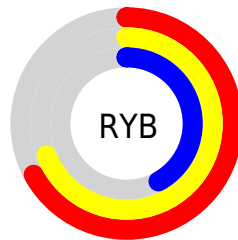
Distribution



Red (69%)

Green (56%)

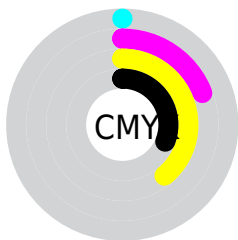
Blue (42%)



Red (67%)

Yellow (69%)

Blue (42%)

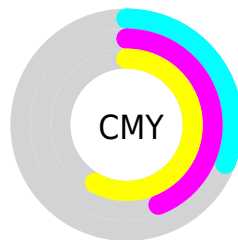


Cyan (0%)

Magenta (19%)

Yellow (39%)

Black (31%)



Cyan (31%)

Magenta (44%)

Yellow (58%)

Brightness & Saturation Gradients

These gradients show how the Hex color B08F6C changes by changing the brightness by 10 percent. The first figure shows a shift by +10% for each color and the second figure -10%.

Similar to the brightness gradients but the following saturation gradients show a change of the Hex color B08F6C by changing the saturation by 10% instead.

 B08F6C

 B08F6C

FFFFFF

 957554

 E9C5A0

 7A5D3C

 FFE1BB

 604526

 FFFDD7

 472F11

 FFFFF3

 301A00

 170000

 000000

 B08F6C

 B08F6C

 B0865A

 B0987E

 B07E49

 B0A08F

 B07537

 B0A9A1

 B06D26

 B0B1B2

 B06414

 B0BAC4

 B05C02

 B0C2D6

 B05B00

 B0CBE7

 B0D3F9

 B0DCFF

Harmonies

Analogous

The Analogous color harmony consists of three colors that are next to each other on the color wheel.



BD8879



B08F6C



9C966A

Triad

The Triadic color harmony groups three colors that are evenly spaced from another and form a triangle on the color wheel.



B08F6C



57A19D



A38CB5

Complementary

The Complementary color scheme is a pair of colors which are on the opposite of each other on the color wheel.



B08F6C



6C8DB0

Split Complementary

Split-complementary colors differ from the complementary color scheme. The scheme consists of three colors, the original color and two neighbors of the complement color.



8694BF



B08F6C



549FB1

Square

The Square scheme is like the rectangle color scheme, but the four colors are evenly spaced on the color wheel.



B08F6C



6BA087



689BBE



B886A3

Rectangle

The Rectangle color scheme consists of four colors that form a rectangle on the color wheel.



B08F6C



8C9A70



689BBE



9A8FB9

Sweetspot

The Sweet Spot groups the original color and five complimentary colors.



B08F6C



E6D8CA



B06C8E



736B63



F2F2F2



737373

Same Dimension

The Same Dimension uses a secret algorithm to generate beautiful new colors.



B08F6C



E6B27C



B0B06C



595550



994F00



1A0D00

Inverse Universe

The Inverse Universe completely reimagines the original color for something new.



6C8DB0



7CAFE6



6C6CB0



505559



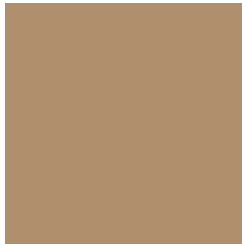
004A99



000C1A

Previews

White Background



This preview shows how the Hex color B08F6C looks on a white background.

Color Contrast Check

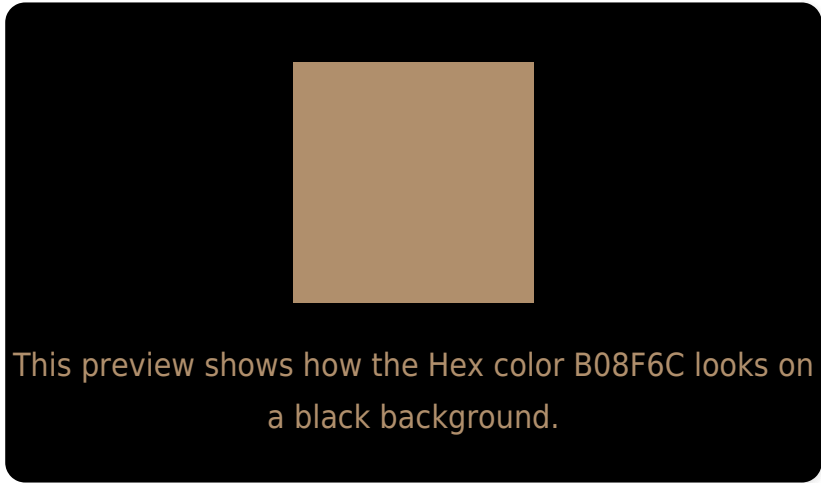
Large Text (above 18pt) WCAG AA ✓ Pass

Any Text WCAG AA ✗ Fail

Large Text (above 18pt) WCAG AAA ✗ Fail

Any Text WCAG AAA ✗ Fail

Black Background



Color Contrast Check

Large Text (above 18pt) WCAG AA ✓ Pass

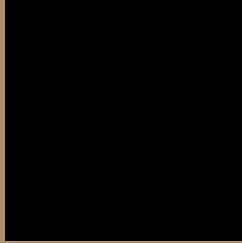
Any Text WCAG AA ✓ Pass

Large Text (above 18pt) WCAG AAA ✓ Pass

Any Text WCAG AAA × Fail

If you want to check with other color combinations, try the [Color Contrast Checker](#).

Hex B08F6C Background



This preview shows how black text looks on a background with the Hex color B08F6C.



This preview shows how white text looks on a background with the Hex color B08F6C.

Color Blindness Simulation

Color vision deficiency is a very complex topic, and I could not describe the different causes any better than Wikipedia does, so if you want to learn more, you should check out their [article about color blindness](#).

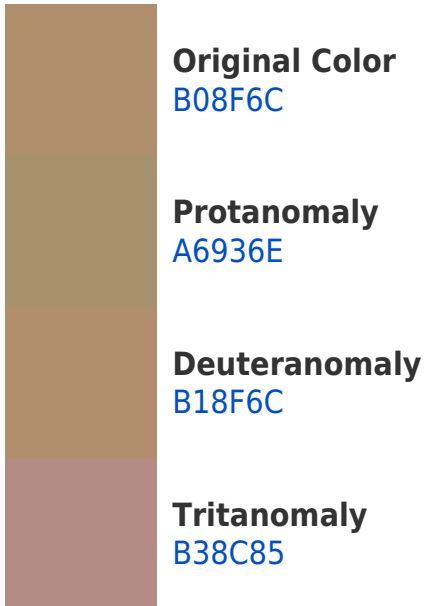
Dichromacy



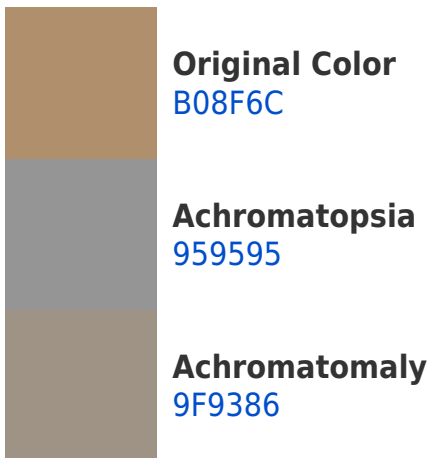


Tritanopia
B48A94

Trichromacy



Monochromacy



CSS Examples

Text

The CSS property to change the color of the text to Hex B08F6C is called "color". The color property can be set on classes, ids or directly on the HTML element.

This example shows how text in the color #B08F6C looks like.

```
.text, #text, p{  
    color:#B08F6C  
}
```

If you want to add a text shadow in that color use the text-shadow property, you can generate a text shadow directly with our [CSS Text Shadow Generator](#).

Here you see how black text with a 4 pixel #B08F6C colored shadow looks like.

```
.shadow{ text-shadow: 4px 4px 2px #B08F6C
}
```

Border

The CSS property to change the border of an element to Hex B08F6C is called "border". The border property can be set on classes, ids or directly on the HTML element.

This example shows the color as border, it can be applied via the CSS property "border" or "border-color".

```
.border, #border, table{ border:4px solid
#B08F6C }
```

If only the border color should be changed use the property `border-color`.

```
.border{ border-color:#B08F6C }
```

If you want to add a box shadow in that color use:

Here you see how a box with a 4 pixel #B08F6C colored shadow looks like.

```
.boxshadow{ -moz-box-shadow:4px 4px 4px  
4px #B08F6C; -webkit-box-shadow:4px 4px  
4px 4px #B08F6C; box-shadow:4px 4px 4px  
4px #B08F6C }
```

Background

The CSS property to change the background color of an element to Hex B08F6C is called "background". The background property can be set on classes, ids or directly on the HTML element.

```
.background, #background, body{  
background:#B08F6C }
```

If only the background color should be changed can be used:

```
.background{ background-color:#B08F6C }
```

This example shows the color as background, it is applied via the CSS property "background".

To optimize and compress your CSS code, you can use our [online CSS compressor and optimizer](#) based on csstidy. If you want to create a linear or radial gradient as background or border, check our [CSS Gradient Generator](#).

Hey! You found this booklet interesting? Support Converting Colors with the new Membership Option!

The pro membership hides all ads, plus gives you double the colors in the color bucket, and more awesome pro features!

[Learn more, Memberships starting at \\$2.50/m!](#)

**Follow me
on Twitter!**

@ConvertingColor