

Converting Colors

Hex(B08F8F)

Have a look what the booklet for
Hex(B08F8F) contains.

Hex(B08F8F)	3
<i>Conversions</i>	4
<i>Details</i>	6
<i>Harmonies</i>	11
<i>Previews</i>	23
<i>Color Blindness Simulation</i>	26
<i>CSS Examples</i>	29

Color

Hex(B08F8F)

Conversions

Conversions Part 1

Format	Color
Hex	B08F8F
RGB	176, 143, 143
RGB Percent	69%, 56%, 56%
CMY	0.3098, 0.4392, 0.4392
CMYK	0.00, 0.19, 0.19, 0.31
HSL	0°, 17%, 63%
HSV	0°, 19%, 69%
XYZ	32.6849, 30.8582, 30.2201
YIQ	152.8670, 19.6680, 6.9960

Conversions

Conversions Part 2

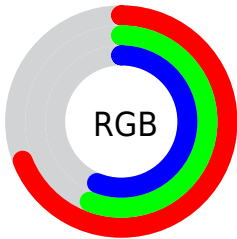
Format	Color
R_{YB}	176, 143, 143
Decimal	11571087
CIE _{Lab}	62.39, 12.42, 4.69
CIE _{LCh}	62, 13.278, 20.693
Yxy	30.8582, 0.3486, 0.3291
Android (android.graphics.Color)	4289761167 (0xFFB08F8F)
YUV	152.8670, -4.8644, 20.2876
Hunter-Lab	55.5502, 7.8140, 6.6304

Details

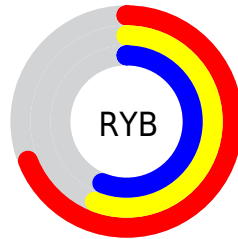
The Hex color **B08F8F** is a light color, and the websafe version is hex **CC9999**. A complement of this color would be **8FB0B0**, and the grayscale version is **999999**.

A 20% lighter version of the original color is **E8C5C5**, and **7B5D5D** is the 20% darker color. If you saturate the color by 10%, you get **B07D7D**, and if you desaturate by 10%, it is **B0A1A1**.

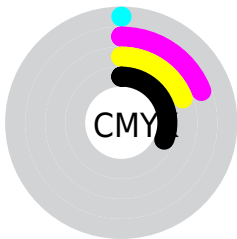
Distribution



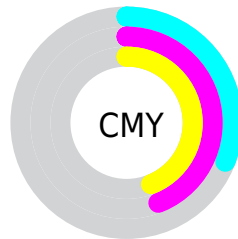
- Red (69%)
- Green (56%)
- Blue (56%)



- Red (69%)
- Yellow (56%)
- Blue (56%)



- Cyan (0%)
- Magenta (19%)
- Yellow (19%)
- Black (31%)



- Cyan (31%)
- Magenta (44%)
- Yellow (44%)

Brightness & Saturation Gradients

These gradients show how the Hex color B08F8F changes by changing the brightness by 10 percent. The first figure shows a shift by +10% for each color and the second figure -10%.

Similar to the brightness gradients but the following saturation gradients show a change of the Hex color B08F8F by changing the saturation by 10% instead.



B08F8F



B08F8F

FFFFFF



957575



E8C5C5



7B5D5D



FFE1E1



624545



FFFDFD



492E2F



32191A



1F0000



000000



B08F8F



B08F8F



B07D7D



B0A1A1

 B06C6C

 B0B2B2

 B05A5A

 B0C4C4

 B04949

 B0D5D5

 B03737

 B0E7E7

 B02525

 B0F9F9

 B01414

 B0FFFF

 B00202

 B00000

Harmonies

Analogous

The Analogous color harmony consists of three colors that are next to each other on the color wheel.



AD8F9B



B08F8F



AD9185

Triad

The Triadic color harmony groups three colors that are evenly spaced from another and form a triangle on the color wheel.



B08F8F



8A9C88



8699AE

Complementary

The Complementary color scheme is a pair of colors which are on the opposite of each other on the color wheel.



B08F8F



8FB0B0

Split Complementary

Split-complementary colors differ from the complementary color scheme. The scheme consists of three colors, the original color and two neighbors of the complement color.



7B9CA9



B08F8F



7E9E93

Square

The Square scheme is like the rectangle color scheme, but the four colors are evenly spaced on the color wheel.



B08F8F



979981



789E9F



9495AD

Rectangle

The Rectangle color scheme consists of four colors that form a rectangle on the color wheel.



B08F8F



A79381



789E9F



819AAD

Sweetspot

The Sweet Spot groups the original color and five complimentary colors.



B08F8F



E6D8D8



B08FB0



736B6B



F2F2F2



737373

Same Dimension

The Same Dimension uses a secret algorithm to generate beautiful new colors.



B08F8F



E6B1B1



B0A08F



595050



990000



1A0000

Inverse Universe

The Inverse Universe completely reimagines the original color for something new.



8FB0B0



B1E6E6



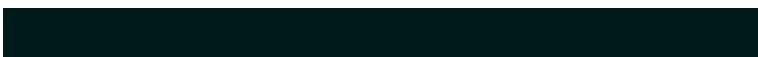
8FA0B0



505959



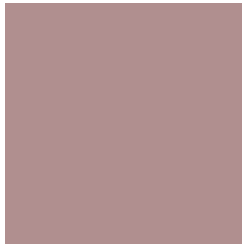
009999



001A1A

Previews

White Background



This preview shows how the Hex color B08F8F looks on a white background.

Color Contrast Check

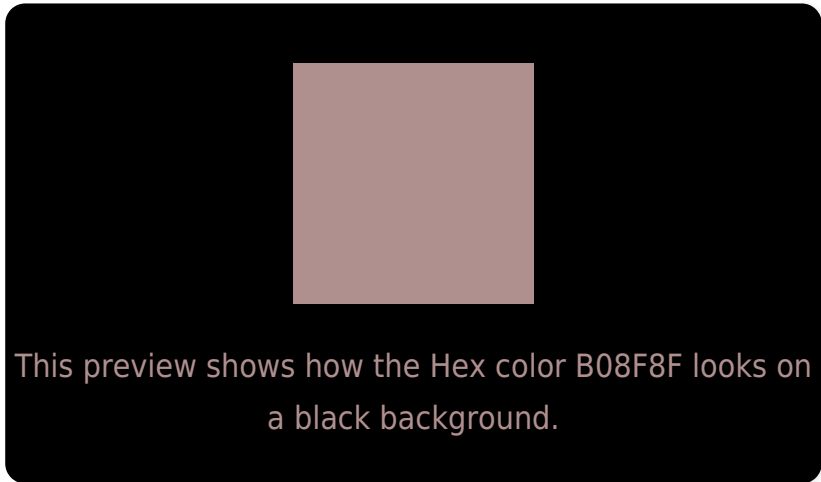
Large Text (above 18pt) WCAG AA × Fail

Any Text WCAG AA × Fail

Large Text (above 18pt) WCAG AAA × Fail

Any Text WCAG AAA × Fail

Black Background



Color Contrast Check

Large Text (above 18pt) WCAG AA ✓ Pass

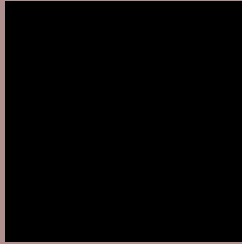
Any Text WCAG AA ✓ Pass

Large Text (above 18pt) WCAG AAA ✓ Pass

Any Text WCAG AAA ✓ Pass

If you want to check with other color combinations, try the [Color Contrast Checker](#).

Hex B08F8F Background



This preview shows how black text looks on a background with the Hex color B08F8F.

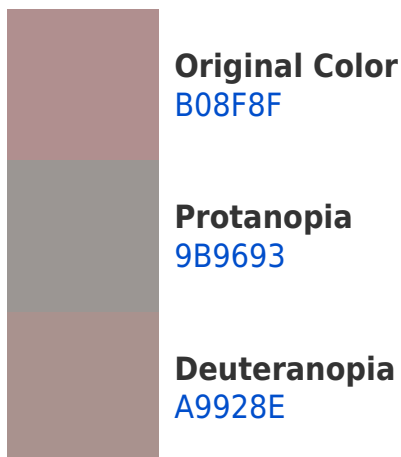


This preview shows how white text looks on a background with the Hex color B08F8F.

Color Blindness Simulation

Color vision deficiency is a very complex topic, and I could not describe the different causes any better than Wikipedia does, so if you want to learn more, you should check out their [article about color blindness](#).

Dichromacy





Tritanopia
B18E99

Trichromacy



Original Color
B08F8F

Protanomaly
A39392

Deuteranomaly
AC918E

Tritanomaly
B18E95

Monochromacy



Original Color
B08F8F

Achromatopsia
999999

Achromatomaly
A19595

CSS Examples

Text

The CSS property to change the color of the text to Hex B08F8F is called "color". The color property can be set on classes, ids or directly on the HTML element.

This example shows how text in the color #B08F8F looks like.

```
.text, #text, p{  
    color:#B08F8F  
}
```

If you want to add a text shadow in that color use the text-shadow property, you can generate a text shadow directly with our [CSS Text Shadow Generator](#).

Here you see how black text with a 4 pixel #B08F8F colored shadow looks like.

```
.shadow{ text-shadow: 4px 4px 2px #B08F8F
}
```

Border

The CSS property to change the border of an element to Hex B08F8F is called "border". The border property can be set on classes, ids or directly on the HTML element.

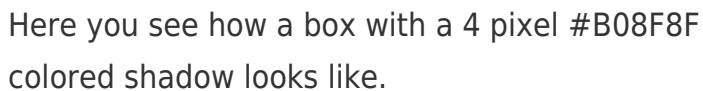
This example shows the color as border, it can be applied via the CSS property "border" or "border-color".

```
.border, #border, table{ border:4px solid
#B08F8F }
```

If only the border color should be changed use the property `border-color`.

```
.border{ border-color:#B08F8F }
```

If you want to add a box shadow in that color use:



Here you see how a box with a 4 pixel #B08F8F colored shadow looks like.

```
.boxshadow{ -moz-box-shadow:4px 4px 4px  
4px #B08F8F; -webkit-box-shadow:4px 4px  
4px 4px #B08F8F; box-shadow:4px 4px 4px  
4px #B08F8F }
```

Background

The CSS property to change the background color of an element to Hex B08F8F is called "background". The background property can be set on classes, ids or directly on the HTML element.

```
.background, #background, body{  
background:#B08F8F }
```

If only the background color should be changed can be used:

```
.background{ background-color:#B08F8F }
```

This example shows the color as background, it is applied via the CSS property "background".

To optimize and compress your CSS code, you can use our [online CSS compressor and optimizer](#) based on csstidy. If you want to create a linear or radial gradient as background or border, check our [CSS Gradient Generator](#).

Hey! You found this booklet interesting? Support Converting Colors with the new Membership Option!

The pro membership hides all ads, plus gives you double the colors in the color bucket, and more awesome pro features!

[Learn more, Memberships starting at \\$2.50/m!](#)

**Follow me
on Twitter!**

@ConvertingColor