

Converting Colors

Hex(B09070)

Have a look what the booklet for
Hex(B09070) contains.

Hex(B09070)	3
<i>Conversions</i>	4
<i>Details</i>	6
<i>Harmonies</i>	11
<i>Previews</i>	23
<i>Color Blindness Simulation</i>	26
<i>CSS Examples</i>	29

Color

Hex(B09070)

Conversions

Conversions Part 1

Format	Color
Hex	B09070
RGB	176, 144, 112
RGB Percent	69%, 56%, 44%
CMY	0.3098, 0.4353, 0.5608
CMYK	0.00, 0.18, 0.36, 0.31
HSL	30°, 29%, 56%
HSV	30°, 36%, 69%
XYZ	30.8024, 30.3465, 19.5632
YIQ	149.9200, 29.3440, -3.1680

Conversions

Conversions Part 2

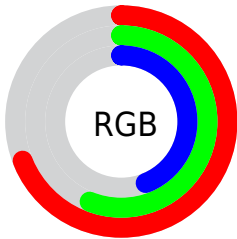
Format	Color
RYB	176, 176, 112
Decimal	11571312
CIELab	61.95, 7.44, 21.54
CIElCh	62, 22.793, 70.947
Yxy	30.3465, 0.3816, 0.3760
Android (android.graphics.Color)	4289761392 (0xFFB09070)
YUV	149.9200, -18.6946, 22.8722
Hunter-Lab	55.0876, 3.4053, 17.5057

Details

The Hex color **B09070** is a light color, and the websafe version is hex **CC9966**. A complement of this color would be **7090B0**, and the grayscale version is **969696**.

A 20% lighter version of the original color is **E9C6A4**, and **7A5E40** is the 20% darker color. If you saturate the color by 10%, you get **B0875E**, and if you desaturate by 10%, it is **B09982**.

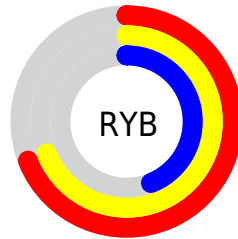
Distribution



Red (69%)

Green (56%)

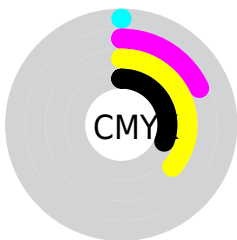
Blue (44%)



Red (69%)

Yellow (69%)

Blue (44%)

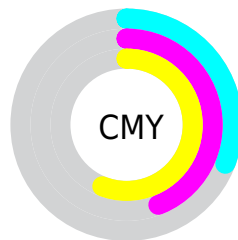


Cyan (0%)

Magenta (18%)

Yellow (36%)

Black (31%)



Cyan (31%)

Magenta (44%)

Yellow (56%)

Brightness & Saturation Gradients

These gradients show how the Hex color B09070 changes by changing the brightness by 10 percent. The first figure shows a shift by +10% for each color and the second figure -10%.

Similar to the brightness gradients but the following saturation gradients show a change of the Hex color B09070 by changing the saturation by 10% instead.

 B09070

 B09070

FFFFFF

 957657

 E9C6A4

 7A5E40

 FFE2BF

 604629

 FFFEDB


 473014

 FFFFF8

 301B00

 180100

 000000

 B09070

 B09070

 B0875E

 B09982

 B07E4D

 B0A293

 B0763B

 B0AAA5

 B06D2A

 B0B3B6

 B06418

 B0BCC8

 B05B06

 B0C5DA

 B05800

 B0CEEB

 B0D6FD

 B0DFFF

Harmonies

Analogous

The Analogous color harmony consists of three colors that are next to each other on the color wheel.



BC8A7C



B09070



9D976E

Triad

The Triadic color harmony groups three colors that are evenly spaced from another and form a triangle on the color wheel.



B09070



5EA19D



A28EB4

Complementary

The Complementary color scheme is a pair of colors which are on the opposite of each other on the color wheel.



B09070



7090B0

Split Complementary

Split-complementary colors differ from the complementary color scheme. The scheme consists of three colors, the original color and two neighbors of the complement color.



8795BD



B09070



5BA0AF

Square

The Square scheme is like the rectangle color scheme, but the four colors are evenly spaced on the color wheel.



B09070



70A088



6C9BBB



B689A3

Rectangle

The Rectangle color scheme consists of four colors that form a rectangle on the color wheel.



B09070



8E9B73



6C9BBB



9A90B8

Sweetspot

The Sweet Spot groups the original color and five complimentary colors.



B09070



E6D9CC



B07090



736B64



F2F2F2



737373

Same Dimension

The Same Dimension uses a secret algorithm to generate beautiful new colors.



B09070



E6B381



B0B070



595550



994D00



1A0D00

Inverse Universe

The Inverse Universe completely reimagines the original color for something new.



7090B0



81B3E6



7070B0



505559



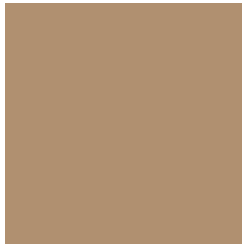
004D99



000D1A

Previews

White Background



This preview shows how the Hex color B09070 looks on a white background.

Color Contrast Check

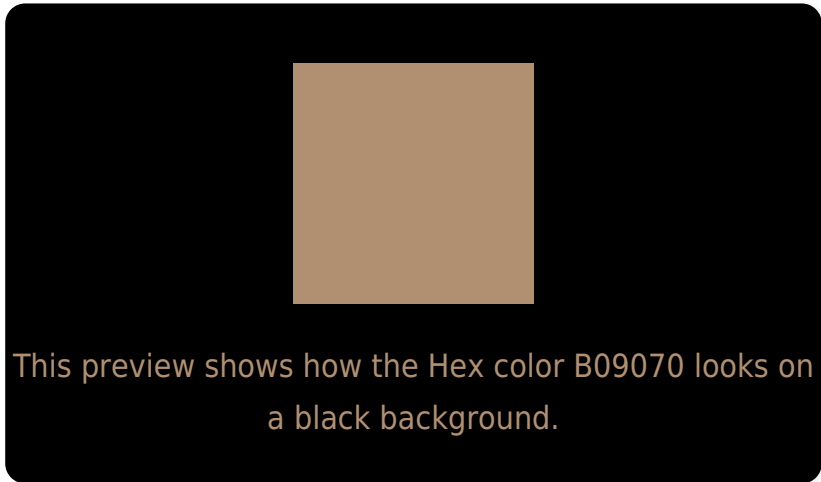
Large Text (above 18pt) WCAG AA × Fail

Any Text WCAG AA × Fail

Large Text (above 18pt) WCAG AAA × Fail

Any Text WCAG AAA × Fail

Black Background



Color Contrast Check

Large Text (above 18pt) WCAG AA ✓ Pass

Any Text WCAG AA ✓ Pass

Large Text (above 18pt) WCAG AAA ✓ Pass

Any Text WCAG AAA ✓ Pass

If you want to check with other color combinations, try the [Color Contrast Checker](#).

Hex B09070 Background



This preview shows how black text looks on a background with the Hex color B09070.



This preview shows how white text looks on a background with the Hex color B09070.

Color Blindness Simulation

Color vision deficiency is a very complex topic, and I could not describe the different causes any better than Wikipedia does, so if you want to learn more, you should check out their [article about color blindness](#).

Dichromacy



Original Color
B09070

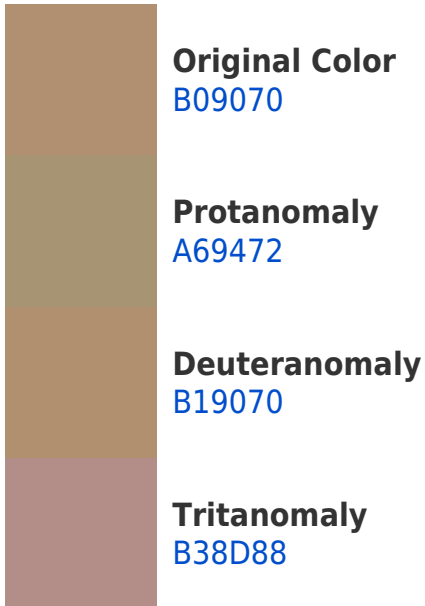
Protanopia
A09673

Deuteranopia
B19070

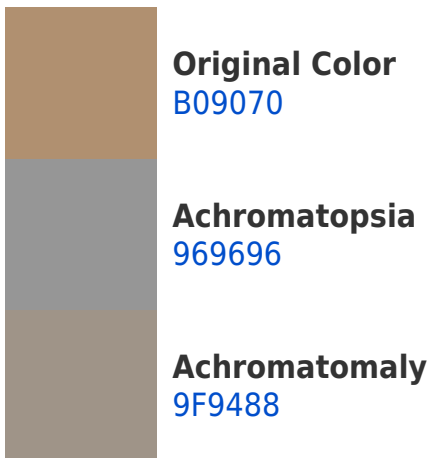


Tritanopia
B48B96

Trichromacy



Monochromacy



CSS Examples

Text

The CSS property to change the color of the text to Hex B09070 is called "color". The color property can be set on classes, ids or directly on the HTML element.

This example shows how text in the color #B09070 looks like.

```
.text, #text, p{  
    color:#B09070  
}
```

If you want to add a text shadow in that color use the text-shadow property, you can generate a text shadow directly with our [CSS Text Shadow Generator](#).

Here you see how black text with a 4 pixel #B09070 colored shadow looks like.

```
.shadow{ text-shadow: 4px 4px 2px #B09070
}
```

Border

The CSS property to change the border of an element to Hex B09070 is called "border". The border property can be set on classes, ids or directly on the HTML element.

This example shows the color as border, it can be applied via the CSS property "border" or "border-color".

```
.border, #border, table{ border:4px solid
#B09070 }
```

If only the border color should be changed use the property `border-color`.

```
.border{ border-color:#B09070 }
```

If you want to add a box shadow in that color use:

Here you see how a box with a 4 pixel #B09070 colored shadow looks like.

```
.boxshadow{ -moz-box-shadow:4px 4px 4px  
4px #B09070; -webkit-box-shadow:4px 4px  
4px 4px #B09070; box-shadow:4px 4px 4px  
4px #B09070 }
```

Background

The CSS property to change the background color of an element to Hex B09070 is called "background". The background property can be set on classes, ids or directly on the HTML element.

```
.background, #background, body{  
background:#B09070 }
```

If only the background color should be changed can be used:

```
.background{ background-color:#B09070 }
```

This example shows the color as background, it is applied via the CSS property "background".

To optimize and compress your CSS code, you can use our [online CSS compressor and optimizer](#) based on csstidy. If you want to create a linear or radial gradient as background or border, check our [CSS Gradient Generator](#).

Hey! You found this booklet interesting? Support Converting Colors with the new Membership Option!

The pro membership hides all ads, plus gives you double the colors in the color bucket, and more awesome pro features!

[Learn more, Memberships starting at \\$2.50/m!](#)

**Follow me
on Twitter!**

@ConvertingColor