

# Converting Colors

Hex(B09280)

Have a look what the booklet for  
Hex(B09280) contains.

<b>Hex(B09280)</b> .....	3
<b><i>Conversions</i></b> .....	4
<b><i>Details</i></b> .....	6
<b><i>Harmonies</i></b> .....	11
<b><i>Previews</i></b> .....	23
<b><i>Color Blindness Simulation</i></b> .....	26
<b><i>CSS Examples</i></b> .....	29

**Color**

**Hex(B09280)**

# Conversions

## Conversions Part 1

Format	Color
Hex	B09280
RGB	176, 146, 128
RGB Percent	69%, 57%, 50%
CMY	0.3098, 0.4275, 0.4980
CMYK	0.00, 0.17, 0.27, 0.31
HSL	22°, 23%, 60%
HSV	22°, 27%, 69%
XYZ	32.0797, 31.3464, 24.7818
YIQ	152.9180, 23.6580, 0.7620

# Conversions

## Conversions Part 2

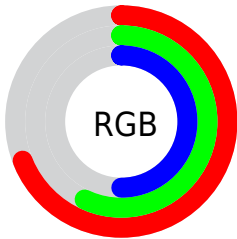
Format	Color
<a href="#">RYB</a>	<a href="#">176, 157, 128</a>
Decimal	<a href="#">11571840</a>
CIELab	<a href="#">62.80, 8.47, 13.75</a>
CIElCh	<a href="#">63, 16.151, 58.356</a>
Yxy	<a href="#">31.3464, 0.3637, 0.3554</a>
Android (android.graphics.Color)	<a href="#">4289761920</a> <a href="#">(0xFFB09280)</a>
YUV	<a href="#">152.9180, -12.2846, 20.2429</a>
Hunter-Lab	<a href="#">55.9878, 4.2974, 12.9481</a>

# Details

The Hex color **B09280** is a light color, and the websafe version is hex **CC9999**. A complement of this color would be **809EB0**, and the grayscale version is **999999**.

A 20% lighter version of the original color is **E8C8B5**, and **7B604F** is the 20% darker color. If you saturate the color by 10%, you get **B0876E**, and if you desaturate by 10%, it is **B09D92**.

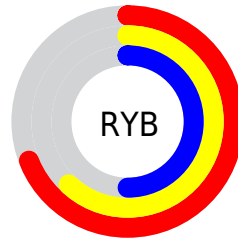
# Distribution



Red (69%)

Green (57%)

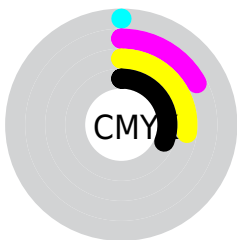
Blue (50%)



Red (69%)

Yellow (62%)

Blue (50%)

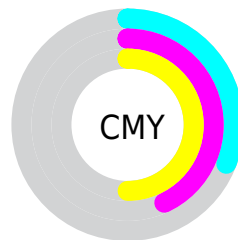


Cyan (0%)

Magenta (17%)

Yellow (27%)

Black (31%)



Cyan (31%)

Magenta (43%)

Yellow (50%)

# Brightness & Saturation Gradients

These gradients show how the Hex color B09280 changes by changing the brightness by 10 percent. The first figure shows a shift by +10% for each color and the second figure -10%.

Similar to the brightness gradients but the following saturation gradients show a change of the Hex color B09280 by changing the saturation by 10% instead.



 B09280

 B09280

FFFFFF

 957867

 E8C8B5

 7B604F

 FFE4D0

 614838

 FFF FED

 493122

 311C0D

 1C0300

 000000

 B09280

 B09280

 B0876E

 B09D92

 B07C5D

 B0A8A3

 B0714B

 B0B3B5

 B0663A

 B0BEC6

 B05B28

 B0C9D8

 B05016

 B0D4EA

 B04505

 B0DFFB

 B04200

 B0EAFB

 B0F5FF

# Harmonies

## Analogous

The Analogous color harmony consists of three colors that are next to each other on the color wheel.



B68F8B



B09280



A4977B

# Triad

The Triadic color harmony groups three colors that are evenly spaced from another and form a triangle on the color wheel.



B09280



77A097



9A95B1

# Complementary

The Complementary color scheme is a pair of colors which are on the opposite of each other on the color wheel.



B09280



809EB0

# Split Complementary

Split-complementary colors differ from the complementary color scheme. The scheme consists of three colors, the original color and two neighbors of the complement color.



8799B4



B09280



72A0A5

# Square

The Square scheme is like the rectangle color scheme, but the four colors are evenly spaced on the color wheel.



B09280



849F88



779DB0



AA90A7

# Rectangle

The Rectangle color scheme consists of four colors that form a rectangle on the color wheel.



B09280



9A9A7D



779DB0



9396B3



# Sweetspot

The Sweet Spot groups the original color and five complimentary colors.



B09280



E6DAD3



B0809E



736C67



F2F2F2



737373



# Same Dimension

The Same Dimension uses a secret algorithm to generate beautiful new colors.



B09280



E6B69A



B0AA80



595450



993900



1A0A00



# Inverse Universe

The Inverse Universe completely reimagines the original color for something new.



809EB0



9AC9E6



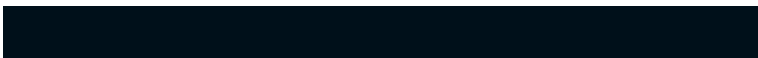
8086B0



505659



006099

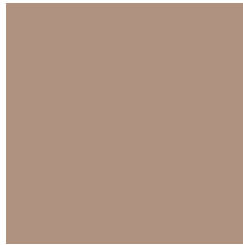


00101A



# Previews

## White Background



This preview shows how the Hex color B09280 looks on a white background.

## Color Contrast Check

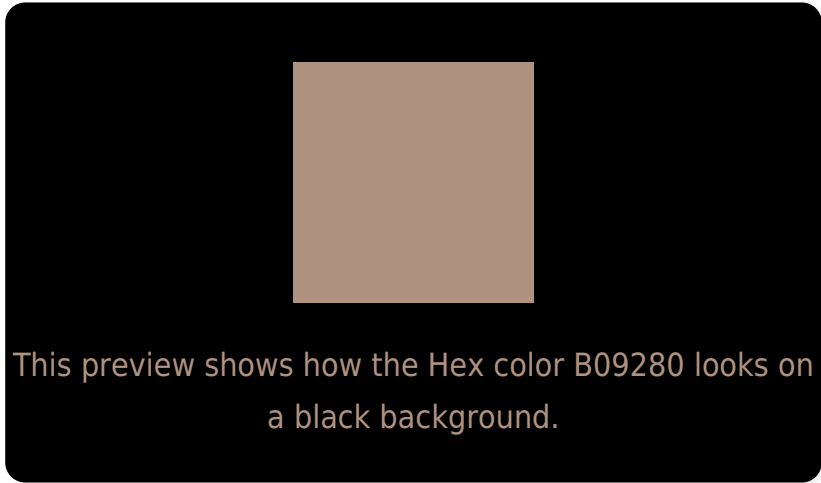
Large Text (above 18pt) WCAG AA × Fail

Any Text WCAG AA × Fail

Large Text (above 18pt) WCAG AAA × Fail

Any Text WCAG AAA × Fail

# Black Background



## Color Contrast Check

Large Text (above 18pt) WCAG AA ✓ Pass

Any Text WCAG AA ✓ Pass

Large Text (above 18pt) WCAG AAA ✓ Pass

Any Text WCAG AAA ✓ Pass

If you want to check with other color combinations, try the [Color Contrast Checker](#).



## Hex B09280 Background



This preview shows how black text looks on a background with the Hex color B09280.

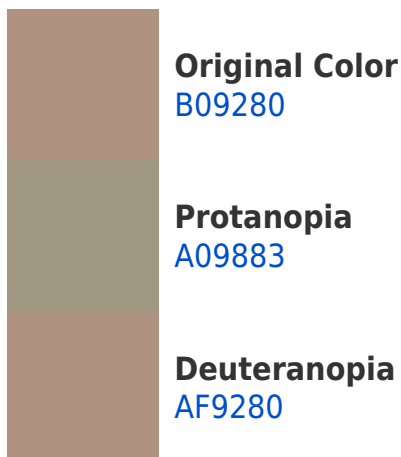


This preview shows how white text looks on a background with the Hex color B09280.

# Color Blindness Simulation

Color vision deficiency is a very complex topic, and I could not describe the different causes any better than Wikipedia does, so if you want to learn more, you should check out their [article about color blindness](#).

## Dichromacy





**Tritanopia**  
B38E99

# Trichromacy



**Original Color**  
B09280

**Protanomaly**  
A69682

**Deuteranomaly**  
AF9280

**Tritanomaly**  
B28F90

# Monochromacy



**Original Color**  
B09280

**Achromatopsia**  
999999

**Achromatomaly**  
A19690

# CSS Examples

## Text

The CSS property to change the color of the text to Hex B09280 is called "color". The color property can be set on classes, ids or directly on the HTML element.

This example shows how text in the color #B09280 looks like.

```
.text, #text, p{  
    color:#B09280  
}
```

If you want to add a text shadow in that color use the text-shadow property, you can generate a text shadow directly with our [CSS Text Shadow Generator](#).

Here you see how black text with a 4 pixel #B09280 colored shadow looks like.

```
.shadow{ text-shadow: 4px 4px 2px #B09280
}
```

## Border

The CSS property to change the border of an element to Hex B09280 is called "border". The border property can be set on classes, ids or directly on the HTML element.

This example shows the color as border, it can be applied via the CSS property "border" or "border-color".

```
.border, #border, table{ border:4px solid
#B09280 }
```

If only the border color should be changed use the property `border-color`.

```
.border{ border-color:#B09280 }
```

If you want to add a box shadow in that color use:

Here you see how a box with a 4 pixel #B09280 colored shadow looks like.

```
.boxshadow{ -moz-box-shadow:4px 4px 4px  
4px #B09280; -webkit-box-shadow:4px 4px  
4px 4px #B09280; box-shadow:4px 4px 4px  
4px #B09280 }
```

# Background

The CSS property to change the background color of an element to Hex B09280 is called "background". The background property can be set on classes, ids or directly on the HTML element.

```
.background, #background, body{  
background:#B09280 }
```

If only the background color should be changed can be used:

```
.background{ background-color:#B09280 }
```

This example shows the color as background, it is applied via the CSS property "background".

To optimize and compress your CSS code, you can use our [online CSS compressor and optimizer](#) based on csstidy. If you want to create a linear or radial gradient as background or border, check our [CSS Gradient Generator](#).



Hey! You found this booklet interesting? Support Converting Colors with the new Membership Option!

The pro membership hides all ads, plus gives you double the colors in the color bucket, and more awesome pro features!

**[Learn more, Memberships starting at \\$2.50/m!](#)**

**Follow me  
on Twitter!**

@ConvertingColor