

# Converting Colors

Hex(B14C61)

Have a look what the booklet for  
Hex(B14C61) contains.

<b>Hex(B14C61)</b> .....	3
<i><b>Conversions</b></i> .....	4
<i><b>Details</b></i> .....	6
<i><b>Harmonies</b></i> .....	11
<i><b>Previews</b></i> .....	23
<i><b>Color Blindness Simulation</b></i> .....	26
<i><b>CSS Examples</b></i> .....	29

# Color

**Hex(B14C61)**

# Conversions

## Conversions Part 1

<b>Format</b>	<b>Color</b>
Hex	B14C61
RGB	177, 76, 97
RGB Percent	69%, 30%, 38%
CMY	0.3059, 0.7020, 0.6196
CMYK	0.00, 0.57, 0.45, 0.31
HSL	348°, 40%, 50%
HSV	348°, 57%, 69%
XYZ	22.8736, 15.3791, 13.0721
YIQ	108.5930, 53.4550, 27.9430

# Conversions

## Conversions Part 2

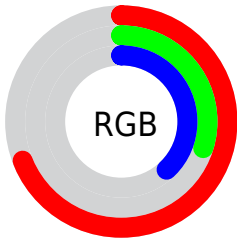
<b>Format</b>	<b>Color</b>
<b>R<sub>YB</sub></b>	177, 76, 97
Decimal	11619425
CIE <sub>Lab</sub>	46.15, 43.12, 8.49
CIE <sub>LCh</sub>	46, 43.950, 11.138
Yxy	15.3791, 0.4457, 0.2996
Android (android.graphics.Color)	4289809505 (0xFFB14C61)
YUV	108.5930, -5.7153, 59.9929
Hunter-Lab	39.2161, 35.4853, 7.6878

# Details

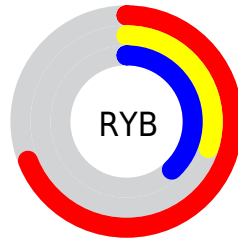
The Hex color **B14C61** is a dark color, and the websafe version is hex **CC6666**. A complement of this color would be **4CB19C**, and the grayscale version is **6D6D6D**.

A 20% lighter version of the original color is **EC8193**, and **781633** is the 20% darker color. If you saturate the color by 10%, you get **B13A53**, and if you desaturate by 10%, it is **B15E6F**.

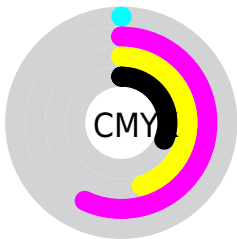
# Distribution



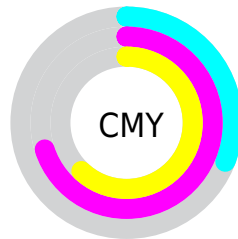
- Red (69%)
- Green (30%)
- Blue (38%)



- Red (69%)
- Yellow (30%)
- Blue (38%)



- Cyan (0%)
- Magenta (57%)
- Yellow (45%)
- Black (31%)



- Cyan (31%)
- Magenta (70%)
- Yellow (62%)

# Brightness & Saturation Gradients

These gradients show how the Hex color B14C61 changes by changing the brightness by 10 percent. The first figure shows a shift by +10% for each color and the second figure -10%.

Similar to the brightness gradients but the following saturation gradients show a change of the Hex color B14C61 by changing the saturation by 10% instead.



 B14C61

 B14C61

FFFFFF

 943249

 EC8193

 781633

 FF9CAE

 5C001E

 FFB7C9

 420004

 FFD4E5

 280001

 FFF0FF

 000000

 B14C61

 B14C61

 B13A53

 B15E6F

 B12945

 B16F7D

 B11737

 B1818B

 B10529

 B19399

 B10025

 B1A5A7

 B1B6B5

 B1C8C3

 B1DAD1

 B1EBDF

# Harmonies

## Analogous

The Analogous color harmony consists of three colors that are next to each other on the color wheel.



A45086



B14C61



AA553F

# Triad

The Triadic color harmony groups three colors that are evenly spaced from another and form a triangle on the color wheel.



B14C61



4C7933



0078B3

# Complementary

The Complementary color scheme is a pair of colors which are on the opposite of each other on the color wheel.



B14C61



4CB19C

# Split Complementary

Split-complementary colors differ from the complementary color scheme. The scheme consists of three colors, the original color and two neighbors of the complement color.



007E9D



B14C61



007E54

# Square

The Square scheme is like the rectangle color scheme, but the four colors are evenly spaced on the color wheel.



B14C61



74701F



007F7A



416DB6

# Rectangle

The Rectangle color scheme consists of four colors that form a rectangle on the color wheel.



B14C61



9D5E2C



007F7A



007AAD



# Sweetspot

The Sweet Spot groups the original color and five complimentary colors.



B14C61



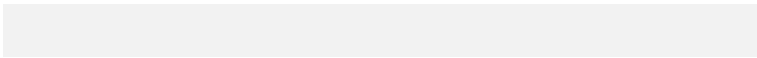
E6BEC7



9B4CB1



735C61



F2F2F2



737373



# Same Dimension

The Same Dimension uses a secret algorithm to generate beautiful new colors.



B14C61



E6496A



B1694C



595052



990020



1A0005



# Inverse Universe

The Inverse Universe completely reimagines the original color for something new.



B14C61



E6496A



4C94B1



595052



990020

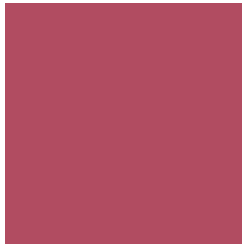


1A0005



# Previews

## White Background



This preview shows how the Hex color B14C61 looks on a white background.

## Color Contrast Check

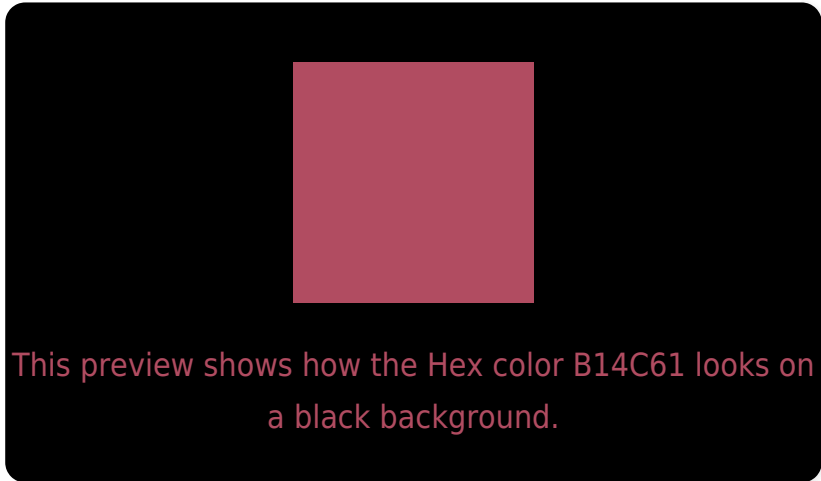
Large Text (above 18pt) WCAG AA ✓ Pass

Any Text WCAG AA ✓ Pass

Large Text (above 18pt) WCAG AAA ✓ Pass

Any Text WCAG AAA × Fail

# Black Background



## Color Contrast Check

Large Text (above 18pt) WCAG AA ✓ Pass

Any Text WCAG AA × Fail

Large Text (above 18pt) WCAG AAA × Fail

Any Text WCAG AAA × Fail

If you want to check with other color combinations, try the [Color Contrast Checker](#).



## Hex B14C61 Background



This preview shows how black text looks on a background with the Hex color B14C61.



This preview shows how white text looks on a background with the Hex color B14C61.

# Color Blindness Simulation

Color vision deficiency is a very complex topic, and I could not describe the different causes any better than Wikipedia does, so if you want to learn more, you should check out their [article about color blindness](#).


## Dichromacy



**Original Color**  
B14C61

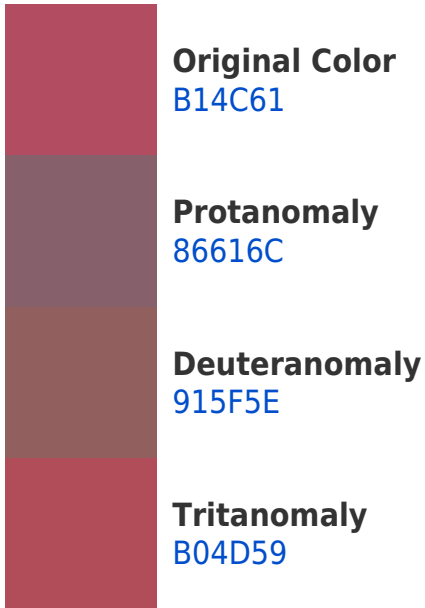
**Protanopia**  
6E6D73

**Deuteranopia**  
7F6A5C

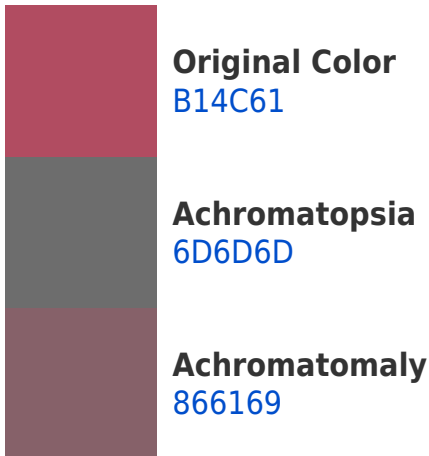


**Tritanopia**  
B04E54

# Trichromacy



# Monochromacy



# CSS Examples

## Text

The CSS property to change the color of the text to Hex B14C61 is called "color". The color property can be set on classes, ids or directly on the HTML element.

This example shows how text in the color #B14C61 looks like.

```
.text, #text, p{  
    color:#B14C61  
}
```

If you want to add a text shadow in that color use the text-shadow property, you can generate a text shadow directly with our [CSS Text Shadow Generator](#).

Here you see how black text with a 4 pixel #B14C61 colored shadow looks like.

```
.shadow{ text-shadow: 4px 4px 2px #B14C61
}
```

## Border

The CSS property to change the border of an element to Hex B14C61 is called "border". The border property can be set on classes, ids or directly on the HTML element.

This example shows the color as border, it can be applied via the CSS property "border" or "border-color".

```
.border, #border, table{ border:4px solid
#B14C61 }
```

If only the border color should be changed use the property `border-color`.

```
.border{ border-color:#B14C61 }
```

If you want to add a box shadow in that color use:

Here you see how a box with a 4 pixel #B14C61 colored shadow looks like.

```
.boxshadow{ -moz-box-shadow:4px 4px 4px  
4px #B14C61; -webkit-box-shadow:4px 4px  
4px 4px #B14C61; box-shadow:4px 4px 4px  
4px #B14C61 }
```

# Background

The CSS property to change the background color of an element to Hex B14C61 is called "background". The background property can be set on classes, ids or directly on the HTML element.

```
.background, #background, body{  
background:#B14C61 }
```

If only the background color should be changed can be used:

```
.background{ background-color:#B14C61 }
```

This example shows the color as background, it is applied via the CSS property "background".

To optimize and compress your CSS code, you can use our [online CSS compressor and optimizer](#) based on csstidy. If you want to create a linear or radial gradient as background or border, check our [CSS Gradient Generator](#).



Hey! You found this booklet interesting? Support Converting Colors with the new Membership Option!

The pro membership hides all ads, plus gives you double the colors in the color bucket, and more awesome pro features!

**[Learn more, Memberships starting at \\$2.50/m!](#)**

**Follow me  
on Twitter!**

@ConvertingColor