

# Converting Colors

Hex(B16862)

Have a look what the booklet for  
Hex(B16862) contains.

<b>Hex(B16862)</b> .....	3
<i><b>Conversions</b></i> .....	4
<i><b>Details</b></i> .....	6
<i><b>Harmonies</b></i> .....	11
<i><b>Previews</b></i> .....	23
<i><b>Color Blindness Simulation</b></i> .....	26
<i><b>CSS Examples</b></i> .....	29

**Color**

**Hex(B16862)**

# Conversions

## Conversions Part 1

<b>Format</b>	<b>Color</b>
Hex	<a href="#">B16862</a>
RGB	<a href="#">177, 104, 98</a>
RGB Percent	<a href="#">69%, 41%, 38%</a>
CMY	<a href="#">0.3059, 0.5922, 0.6157</a>
CMYK	<a href="#">0.00, 0.41, 0.45, 0.31</a>
HSL	<a href="#">5°, 34%, 54%</a>
HSV	<a href="#">5°, 45%, 69%</a>
XYZ	<a href="#">25.2864, 20.1296, 14.1079</a>
YIQ	<a href="#">125.1430, 45.4340, 13.6100</a>

# Conversions

## Conversions Part 2

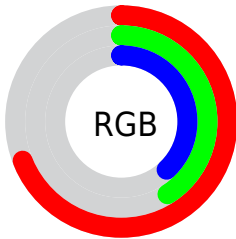
<b>Format</b>	<b>Color</b>
<b>R<sub>YB</sub></b>	177, 104, 98
Decimal	11626594
CIE Lab	51.98, 28.55, 16.01
CIE LCh	52, 32.728, 29.284
Yxy	20.1296, 0.4248, 0.3382
Android (android.graphics.Color)	4289816674 (0xFFB16862)
YUV	125.1430, -13.3815, 45.4786
Hunter-Lab	44.8660, 22.0867, 12.7627

# Details

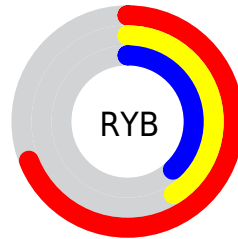
The Hex color **B16862** is a dark color, and the websafe version is hex **996666**. A complement of this color would be **62ABB1**, and the grayscale version is **7D7D7D**.

A 20% lighter version of the original color is **EB9C95**, and **793734** is the 20% darker color. If you saturate the color by 10%, you get **B15850**, and if you desaturate by 10%, it is **B17874**.

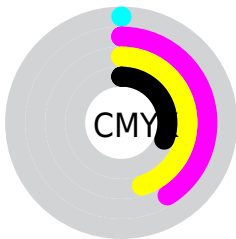
# Distribution



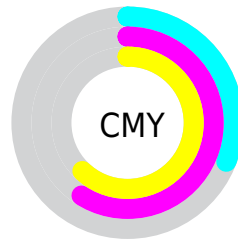
- Red (69%)
- Green (41%)
- Blue (38%)



- Red (69%)
- Yellow (41%)
- Blue (38%)



- Cyan (0%)
- Magenta (41%)
- Yellow (45%)
- Black (31%)



- Cyan (31%)
- Magenta (59%)
- Yellow (62%)

# Brightness & Saturation Gradients

These gradients show how the Hex color B16862 changes by changing the brightness by 10 percent. The first figure shows a shift by +10% for each color and the second figure -10%.

Similar to the brightness gradients but the following saturation gradients show a change of the Hex color B16862 by changing the saturation by 10% instead.



 B16862

 B16862

FFFFFF

 954F4A

 EB9C95

 793734

 FFB7AF

 5E201E

 FFD3CB

 440707

 FFF0E7

 2D0000

 000000

 B16862

 B16862

 B15850

 B17874

 B1473F

 B18985

 B1372D

 B19997

 B1271B

 B1A9A9

 B1160A

 B1BABB

 B10D00

 B1CACC

 B1DADE

 B1EBF0

 B1FBFF

# Harmonies

## Analogous

The Analogous color harmony consists of three colors that are next to each other on the color wheel.



B0667E



B16862



A5704C

# Triad

The Triadic color harmony groups three colors that are evenly spaced from another and form a triangle on the color wheel.



B16862



50885E



507FB4

# Complementary

The Complementary color scheme is a pair of colors which are on the opposite of each other on the color wheel.



B16862



62ABB1

# Split Complementary

Split-complementary colors differ from the complementary color scheme. The scheme consists of three colors, the original color and two neighbors of the complement color.



0786AB



B16862



238B7A

# Square

The Square scheme is like the rectangle color scheme, but the four colors are evenly spaced on the color wheel.



B16862



72824A



008A96



7E75AD

# Rectangle

The Rectangle color scheme consists of four colors that form a rectangle on the color wheel.



B16862



977745



008A96



3D82B3



# Sweetspot

The Sweet Spot groups the original color and five complimentary colors.



B16862



E6CAC8



B162AC



736260



F2F2F2



737373



# Same Dimension

The Same Dimension uses a secret algorithm to generate beautiful new colors.



B16862



E6736A



B18F62



595150



990C00



1A0200



# Inverse Universe

The Inverse Universe completely reimagines the original color for something new.



62ABB1



6ADCE6



6284B1



505959



008D99

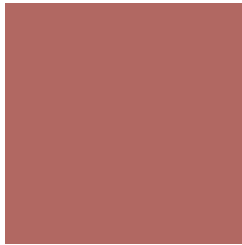


00181A



# Previews

## White Background



This preview shows how the Hex color B16862 looks on a white background.

## Color Contrast Check

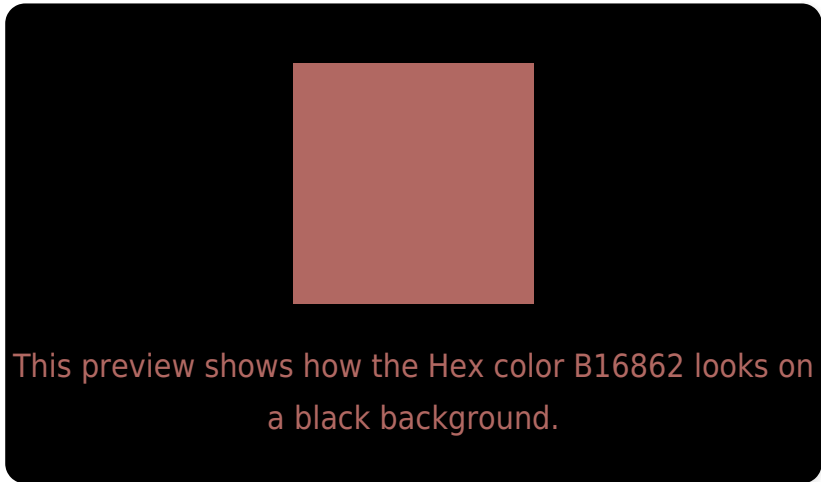
Large Text (above 18pt) WCAG AA ✓ Pass

Any Text WCAG AA × Fail

Large Text (above 18pt) WCAG AAA × Fail

Any Text WCAG AAA × Fail

# Black Background



## Color Contrast Check

Large Text (above 18pt) WCAG AA ✓ Pass

Any Text WCAG AA ✓ Pass

Large Text (above 18pt) WCAG AAA ✓ Pass

Any Text WCAG AAA × Fail

If you want to check with other color combinations, try the [Color Contrast Checker](#).



## Hex B16862 Background



This preview shows how black text looks on a background with the Hex color B16862.

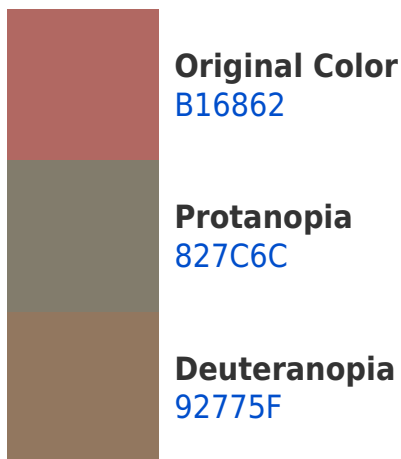


This preview shows how white text looks on a background with the Hex color B16862.

# Color Blindness Simulation

Color vision deficiency is a very complex topic, and I could not describe the different causes any better than Wikipedia does, so if you want to learn more, you should check out their [article about color blindness](#).

## Dichromacy





**Tritanopia**  
B2666E

# Trichromacy



**Original Color**  
B16862

**Protanomaly**  
937568

**Deuteranomaly**  
9D7260

**Tritanomaly**  
B2676A

# Monochromacy



**Original Color**  
B16862

**Achromatopsia**  
7D7D7D

**Achromatomaly**  
907573

# CSS Examples

## Text

The CSS property to change the color of the text to Hex B16862 is called "color". The color property can be set on classes, ids or directly on the HTML element.

This example shows how text in the color #B16862 looks like.

```
.text, #text, p{  
    color:#B16862  
}
```

If you want to add a text shadow in that color use the text-shadow property, you can generate a text shadow directly with our [CSS Text Shadow Generator](#).

Here you see how black text with a 4 pixel #B16862 colored shadow looks like.

```
.shadow{ text-shadow: 4px 4px 2px #B16862
}
```

## Border

The CSS property to change the border of an element to Hex B16862 is called "border". The border property can be set on classes, ids or directly on the HTML element.

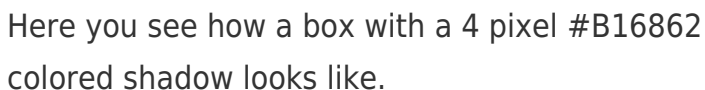
This example shows the color as border, it can be applied via the CSS property "border" or "border-color".

```
.border, #border, table{ border:4px solid
#B16862 }
```

If only the border color should be changed use the property `border-color`.

```
.border{ border-color:#B16862 }
```

If you want to add a box shadow in that color use:



Here you see how a box with a 4 pixel #B16862 colored shadow looks like.

```
.boxshadow{ -moz-box-shadow:4px 4px 4px  
4px #B16862; -webkit-box-shadow:4px 4px  
4px 4px #B16862; box-shadow:4px 4px 4px  
4px #B16862 }
```

# Background

The CSS property to change the background color of an element to Hex B16862 is called "background". The background property can be set on classes, ids or directly on the HTML element.

```
.background, #background, body{  
background:#B16862 }
```

If only the background color should be changed can be used:

```
.background{ background-color:#B16862 }
```

This example shows the color as background, it is applied via the CSS property "background".

To optimize and compress your CSS code, you can use our [online CSS compressor and optimizer](#) based on csstidy. If you want to create a linear or radial gradient as background or border, check our [CSS Gradient Generator](#).



Hey! You found this booklet interesting? Support Converting Colors with the new Membership Option!

The pro membership hides all ads, plus gives you double the colors in the color bucket, and more awesome pro features!

**[Learn more, Memberships starting at \\$2.50/m!](#)**

**Follow me  
on Twitter!**

@ConvertingColor