

Converting Colors

Hex(B1767A)

Have a look what the booklet for
Hex(B1767A) contains.

Hex(B1767A)	3
<i>Conversions</i>	4
<i>Details</i>	6
<i>Harmonies</i>	11
<i>Previews</i>	23
<i>Color Blindness Simulation</i>	26
<i>CSS Examples</i>	29

Color

Hex(B1767A)

Conversions

Conversions Part 1

Format	Color
Hex	B1767A
RGB	177, 118, 122
RGB Percent	69%, 46%, 48%
CMY	0.3059, 0.5373, 0.5216
CMYK	0.00, 0.33, 0.31, 0.31
HSL	356°, 27%, 58%
HSV	356°, 33%, 69%
XYZ	28.1227, 23.7091, 21.5064
YIQ	136.0970, 33.8800, 13.7520

Conversions

Conversions Part 2

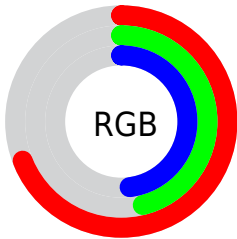
Format	Color
R_{YB}	177, 118, 122
Decimal	11630202
CIE _{Lab}	55.80, 23.72, 7.31
CIE _{LCh}	56, 24.816, 17.132
Yxy	23.7091, 0.3835, 0.3233
Android (android.graphics.Color)	4289820282 (0xFFB1767A)
YUV	136.0970, -6.9498, 35.8719
Hunter-Lab	48.6920, 17.8841, 7.8970

Details

The Hex color **B1767A** is a dark color, and the websafe version is hex **996666**. A complement of this color would be **76B1AD**, and the grayscale version is **888888**.

A 20% lighter version of the original color is **EAABAE**, and **7B4549** is the 20% darker color. If you saturate the color by 10%, you get **B16469**, and if you desaturate by 10%, it is **B1888B**.

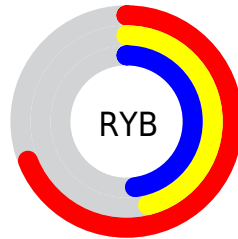
Distribution



Red (69%)

Green (46%)

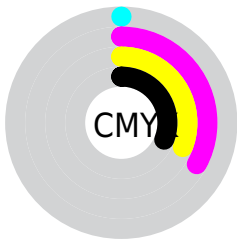
Blue (48%)



Red (69%)

Yellow (46%)

Blue (48%)

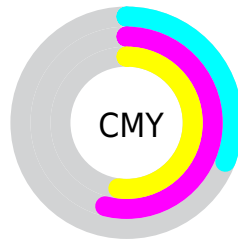


Cyan (0%)

Magenta (33%)

Yellow (31%)

Black (31%)



Cyan (31%)

Magenta (54%)

Yellow (52%)

Brightness & Saturation Gradients

These gradients show how the Hex color B1767A changes by changing the brightness by 10 percent. The first figure shows a shift by +10% for each color and the second figure -10%.

Similar to the brightness gradients but the following saturation gradients show a change of the Hex color B1767A by changing the saturation by 10% instead.

 B1767A

 B1767A

FFFFFF

 955D61

 EAABAE

 7B4549

 FFC6CA

 612E33

 FFE2E6

 47171E

 300004

 0E0000

 000000

 B1767A

 B1767A

 B16469

 B1888B

 B15359

 B1999B

 B14148

 B1ABAB

 B12F38

 B1BDBC

 B11E27

 B1CFCD

 B10C17

 B1E0DD

 B1000C

 B1F2EE

 B1FFFE

 B1FFFF

Harmonies

Analogous

The Analogous color harmony consists of three colors that are next to each other on the color wheel.



AA7790



B1767A



AC7A67

Triad

The Triadic color harmony groups three colors that are evenly spaced from another and form a triangle on the color wheel.



B1767A



708E68



5C8BAF

Complementary

The Complementary color scheme is a pair of colors which are on the opposite of each other on the color wheel.



B1767A



76B1AD

Split Complementary

Split-complementary colors differ from the complementary color scheme. The scheme consists of three colors, the original color and two neighbors of the complement color.



448FA5



B1767A



57917B

Square

The Square scheme is like the rectangle color scheme, but the four colors are evenly spaced on the color wheel.



B1767A



88885C



449292



7C83AF

Rectangle

The Rectangle color scheme consists of four colors that form a rectangle on the color wheel.



B1767A



A37F5F



449292



538CAD

Sweetspot

The Sweet Spot groups the original color and five complimentary colors.



B1767A



E6CFD0



AC76B1



736566



F2F2F2



737373

Same Dimension

The Same Dimension uses a secret algorithm to generate beautiful new colors.



B1767A



E68A90



B18F76



595051



99000A



1A0002

Inverse Universe

The Inverse Universe completely reimagines the original color for something new.



B1767A



E68A90



7698B1



595051



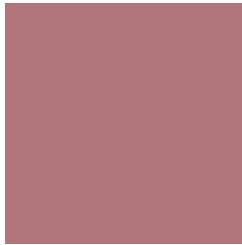
99000A



1A0002

Previews

White Background



This preview shows how the Hex color B1767A looks on a white background.

Color Contrast Check

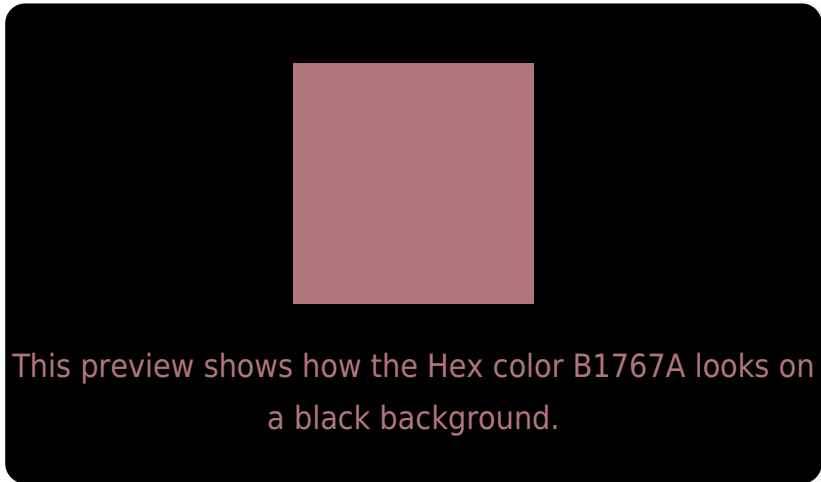
Large Text (above 18pt) WCAG AA ✓ Pass

Any Text WCAG AA ✗ Fail

Large Text (above 18pt) WCAG AAA ✗ Fail

Any Text WCAG AAA ✗ Fail

Black Background



Color Contrast Check

Large Text (above 18pt) WCAG AA ✓ Pass

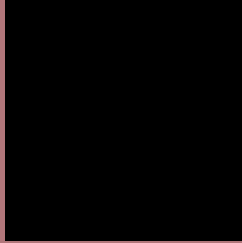
Any Text WCAG AA ✓ Pass

Large Text (above 18pt) WCAG AAA ✓ Pass

Any Text WCAG AAA × Fail

If you want to check with other color combinations, try the [Color Contrast Checker](#).

Hex B1767A Background



This preview shows how black text looks on a background with the Hex color B1767A.



This preview shows how white text looks on a background with the Hex color B1767A.

Color Blindness Simulation

Color vision deficiency is a very complex topic, and I could not describe the different causes any better than Wikipedia does, so if you want to learn more, you should check out their [article about color blindness](#).

Dichromacy





Tritanopia
B1757E

Trichromacy



Original Color
B1767A

Protanomaly
98807F

Deuteranomaly
A17D79

Tritanomaly
B1757D

Monochromacy



Original Color
B1767A

Achromatopsia
888888

Achromatomaly
978183

CSS Examples

Text

The CSS property to change the color of the text to Hex B1767A is called "color". The color property can be set on classes, ids or directly on the HTML element.

This example shows how text in the color #B1767A looks like.

```
.text, #text, p{  
    color:#B1767A  
}
```

If you want to add a text shadow in that color use the text-shadow property, you can generate a text shadow directly with our [CSS Text Shadow Generator](#).

Here you see how black text with a 4 pixel #B1767A colored shadow looks like.

```
.shadow{ text-shadow: 4px 4px 2px #B1767A
}
```

Border

The CSS property to change the border of an element to Hex B1767A is called "border". The border property can be set on classes, ids or directly on the HTML element.

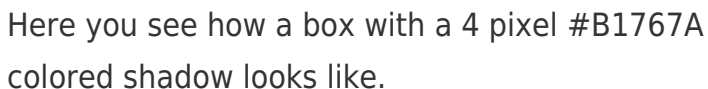
This example shows the color as border, it can be applied via the CSS property "border" or "border-color".

```
.border, #border, table{ border:4px solid
#B1767A }
```

If only the border color should be changed use the property `border-color`.

```
.border{ border-color:#B1767A }
```

If you want to add a box shadow in that color use:



Here you see how a box with a 4 pixel #B1767A colored shadow looks like.

```
.boxshadow{ -moz-box-shadow:4px 4px 4px  
4px #B1767A; -webkit-box-shadow:4px 4px  
4px 4px #B1767A; box-shadow:4px 4px 4px  
4px #B1767A }
```

Background

The CSS property to change the background color of an element to Hex B1767A is called "background". The background property can be set on classes, ids or directly on the HTML element.

```
.background, #background, body{  
background:#B1767A }
```

If only the background color should be changed can be used:

```
.background{ background-color:#B1767A }
```

This example shows the color as background, it is applied via the CSS property "background".

To optimize and compress your CSS code, you can use our [online CSS compressor and optimizer](#) based on csstidy. If you want to create a linear or radial gradient as background or border, check our [CSS Gradient Generator](#).

Hey! You found this booklet interesting? Support Converting Colors with the new Membership Option!

The pro membership hides all ads, plus gives you double the colors in the color bucket, and more awesome pro features!

[Learn more, Memberships starting at \\$2.50/m!](#)

**Follow me
on Twitter!**

@ConvertingColor