

Converting Colors

Hex(B17743)

Have a look what the booklet for
Hex(B17743) contains.

Hex(B17743)	3
<i>Conversions</i>	4
<i>Details</i>	6
<i>Harmonies</i>	11
<i>Previews</i>	23
<i>Color Blindness Simulation</i>	26
<i>CSS Examples</i>	29

Color

Hex(B17743)

Conversions

Conversions Part 1

Format	Color
Hex	B17743
RGB	177, 119, 67
RGB Percent	69%, 47%, 26%
CMY	0.3059, 0.5333, 0.7373
CMYK	0.00, 0.33, 0.62, 0.31
HSL	28°, 45%, 48%
HSV	28°, 62%, 69%
XYZ	25.7414, 22.9460, 8.3825
YIQ	130.4140, 51.2600, -3.8760

Conversions

Conversions Part 2

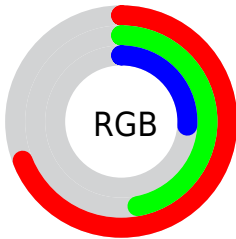
Format	Color
RYB	177, 166, 67
Decimal	11630403
CIELab	55.02, 17.39, 37.36
CIElCh	55, 41.210, 65.041
Yxy	22.9460, 0.4511, 0.4021
Android (android.graphics.Color)	4289820483 (0xFFB17743)
YUV	130.4140, -31.2631, 40.8559
Hunter-Lab	47.9020, 12.0932, 23.1561

Details

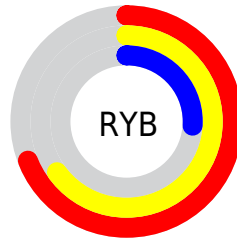
The Hex color **B17743** is a dark color, and the websafe version is hex **996633**. A complement of this color would be **437DB1**, and the grayscale version is **838383**.

A 20% lighter version of the original color is **ECAB75**, and **794614** is the 20% darker color. If you saturate the color by 10%, you get **B16E31**, and if you desaturate by 10%, it is **B18055**.

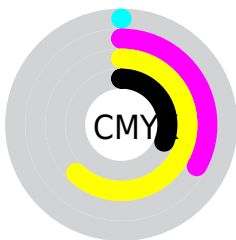
Distribution



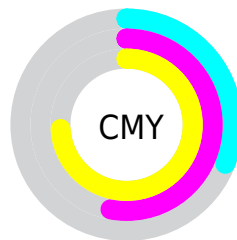
- Red (69%)
- Green (47%)
- Blue (26%)



- Red (69%)
- Yellow (65%)
- Blue (26%)



- Cyan (0%)
- Magenta (33%)
- Yellow (62%)
- Black (31%)



- Cyan (31%)
- Magenta (53%)
- Yellow (74%)

Brightness & Saturation Gradients

These gradients show how the Hex color B17743 changes by changing the brightness by 10 percent. The first figure shows a shift by +10% for each color and the second figure -10%.

Similar to the brightness gradients but the following saturation gradients show a change of the Hex color B17743 by changing the saturation by 10% instead.

 B17743

 B17743

FFFFFF

 945E2B

 ECAB75

 794614

 FFC78F

 5D3000

 FFE3A9

 431A00

 FFFFC5

 290400

 FFFFE1

 000000

FFFFFFE

 B17743

 B17743

 B16E31

 B18055

 B16420

 B18A66

 B15B0E

 B19378

 B15400

 B19C8A

 B1A69C

 B1AFAD

 B1B8BF

 B1C2D1

 B1CBE2

Harmonies

Analogous

The Analogous color harmony consists of three colors that are next to each other on the color wheel.



C46B5D



B17743



93843A

Triad

The Triadic color harmony groups three colors that are evenly spaced from another and form a triangle on the color wheel.



B17743



009689



8E78BE

Complementary

The Complementary color scheme is a pair of colors which are on the opposite of each other on the color wheel.



B17743



437DB1

Split Complementary

Split-complementary colors differ from the complementary color scheme. The scheme consists of three colors, the original color and two neighbors of the complement color.



5185CB



B17743



0095AC

Square

The Square scheme is like the rectangle color scheme, but the four colors are evenly spaced on the color wheel.



B17743



3D9464



008FC4



B56BA2

Rectangle

The Rectangle color scheme consists of four colors that form a rectangle on the color wheel.



B17743



7B8B40



008FC4



7D7DC4

Sweetspot

The Sweet Spot groups the original color and five complimentary colors.



B17743



E6CFBA



B1437E



736558



F2F2F2



737373

Same Dimension

The Same Dimension uses a secret algorithm to generate beautiful new colors.



B17743



E68B39



B1AD43



595550



994800



1A0C00

Inverse Universe

The Inverse Universe completely reimagines the original color for something new.



437DB1



3994E6



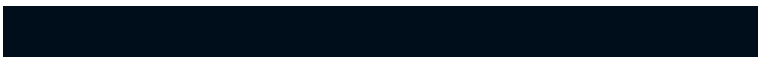
4347B1



505559



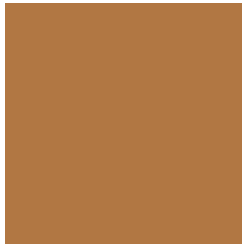
005199



000D1A

Previews

White Background



This preview shows how the Hex color B17743 looks on a white background.

Color Contrast Check

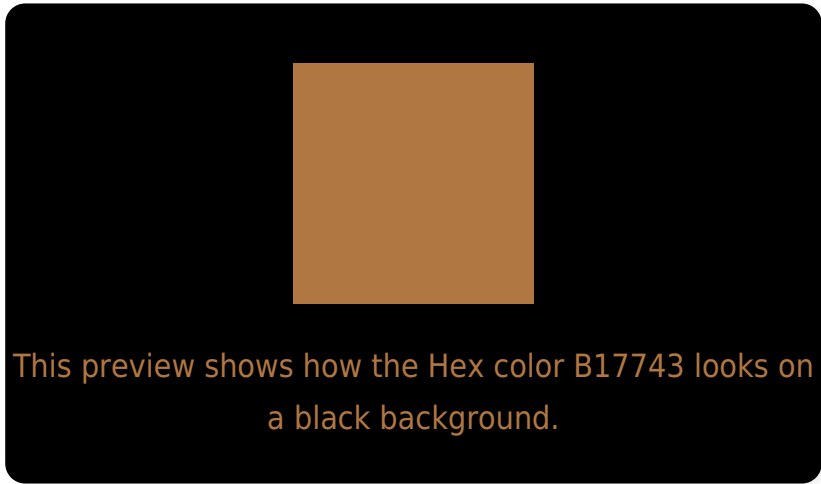
Large Text (above 18pt) WCAG AA ✓ Pass

Any Text WCAG AA × Fail

Large Text (above 18pt) WCAG AAA × Fail

Any Text WCAG AAA × Fail

Black Background



Color Contrast Check

Large Text (above 18pt) WCAG AA ✓ Pass

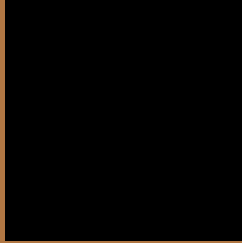
Any Text WCAG AA ✓ Pass

Large Text (above 18pt) WCAG AAA ✓ Pass

Any Text WCAG AAA × Fail

If you want to check with other color combinations, try the [Color Contrast Checker](#).

Hex B17743 Background



This preview shows how black text looks on a background with the Hex color B17743.



This preview shows how white text looks on a background with the Hex color B17743.

Color Blindness Simulation

Color vision deficiency is a very complex topic, and I could not describe the different causes any better than Wikipedia does, so if you want to learn more, you should check out their [article about color blindness](#).

Dichromacy



Original Color
B17743

Protanopia
918447

Deuteranopia
A37E41



Tritanopia
B57179

Trichromacy



Original Color
B17743

Protanomaly
9D7F46

Deuteranomaly
A87B42

Tritanomaly
B47365

Monochromacy



Original Color
B17743

Achromatopsia
828282

Achromatomaly
937E6B

CSS Examples

Text

The CSS property to change the color of the text to Hex B17743 is called "color". The color property can be set on classes, ids or directly on the HTML element.

This example shows how text in the color #B17743 looks like.

```
.text, #text, p{  
    color:#B17743  
}
```

If you want to add a text shadow in that color use the text-shadow property, you can generate a text shadow directly with our [CSS Text Shadow Generator](#).

Here you see how black text with a 4 pixel #B17743 colored shadow looks like.

```
.shadow{ text-shadow: 4px 4px 2px #B17743  
}
```

Border

The CSS property to change the border of an element to Hex B17743 is called "border". The border property can be set on classes, ids or directly on the HTML element.

This example shows the color as border, it can be applied via the CSS property "border" or "border-color".

```
.border, #border, table{ border:4px solid  
#B17743 }
```

If only the border color should be changed use the property `border-color`.

```
.border{ border-color:#B17743 }
```

If you want to add a box shadow in that color use:

Here you see how a box with a 4 pixel #B17743 colored shadow looks like.

```
.boxshadow{ -moz-box-shadow:4px 4px 4px  
4px #B17743; -webkit-box-shadow:4px 4px  
4px 4px #B17743; box-shadow:4px 4px 4px  
4px #B17743 }
```

Background

The CSS property to change the background color of an element to Hex B17743 is called "background". The background property can be set on classes, ids or directly on the HTML element.

```
.background, #background, body{  
background:#B17743 }
```

If only the background color should be changed can be used:

```
.background{ background-color:#B17743 }
```

This example shows the color as background, it is applied via the CSS property "background".

To optimize and compress your CSS code, you can use our [online CSS compressor and optimizer](#) based on csstidy. If you want to create a linear or radial gradient as background or border, check our [CSS Gradient Generator](#).

Hey! You found this booklet interesting? Support Converting Colors with the new Membership Option!

The pro membership hides all ads, plus gives you double the colors in the color bucket, and more awesome pro features!

[Learn more, Memberships starting at \\$2.50/m!](#)

**Follow me
on Twitter!**

@ConvertingColor