

# Converting Colors

Hex(B17975)

Have a look what the booklet for  
Hex(B17975) contains.

<b>Hex(B17975)</b> .....	3
<b><i>Conversions</i></b> .....	4
<b><i>Details</i></b> .....	6
<b><i>Harmonies</i></b> .....	11
<b><i>Previews</i></b> .....	23
<b><i>Color Blindness Simulation</i></b> .....	26
<b><i>CSS Examples</i></b> .....	29

**Color**

**Hex(B17975)**

# Conversions

## Conversions Part 1

<b>Format</b>	<b>Color</b>
Hex	<a href="#">B17975</a>
RGB	<a href="#">177, 121, 117</a>
RGB Percent	<a href="#">69%, 47%, 46%</a>
CMY	<a href="#">0.3059, 0.5255, 0.5412</a>
CMYK	<a href="#">0.00, 0.32, 0.34, 0.31</a>
HSL	<a href="#">4°, 28%, 58%</a>
HSV	<a href="#">4°, 34%, 69%</a>
XYZ	<a href="#">28.1797, 24.3062, 20.0360</a>
YIQ	<a href="#">137.2880, 34.6600, 10.6280</a>

# Conversions

## Conversions Part 2

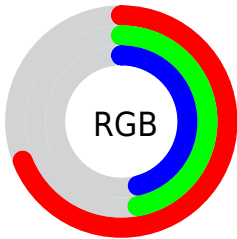
<b>Format</b>	<b>Color</b>
<b>R<sub>YB</sub></b>	177, 121, 117
Decimal	11630965
CIE Lab	56.39, 21.36, 11.06
CIE LCh	56, 24.056, 27.367
Yxy	24.3062, 0.3886, 0.3352
Android (android.graphics.Color)	4289821045 (0xFFB17975)
YUV	137.2880, -10.0020, 34.8274
Hunter-Lab	49.3013, 15.7499, 10.4156

# Details

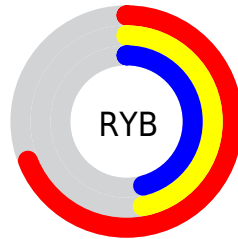
The Hex color **B17975** is a dark color, and the websafe version is hex **996666**. A complement of this color would be **75ADB1**, and the grayscale version is **898989**.

A 20% lighter version of the original color is **EAAEA9**, and **7B4845** is the 20% darker color. If you saturate the color by 10%, you get **B16863**, and if you desaturate by 10%, it is **B18A87**.

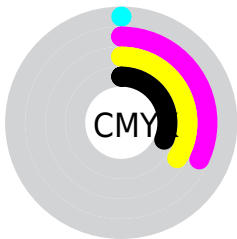
# Distribution



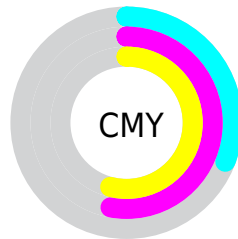
- Red (69%)
- Green (47%)
- Blue (46%)



- Red (69%)
- Yellow (47%)
- Blue (46%)



- Cyan (0%)
- Magenta (32%)
- Yellow (34%)
- Black (31%)



- Cyan (31%)
- Magenta (53%)
- Yellow (54%)

# Brightness & Saturation Gradients

These gradients show how the Hex color B17975 changes by changing the brightness by 10 percent. The first figure shows a shift by +10% for each color and the second figure -10%.

Similar to the brightness gradients but the following saturation gradients show a change of the Hex color B17975 by changing the saturation by 10% instead.



 B17975

 B17975

FFFFFF

 95605C

 EAAEA9

 7B4845

 FFC9C4

 60312F

 FFE5E0

 471A1A

FFFFFFD

 300400

 0F0000

 000000

 B17975

 B17975

 B16863

 B18A87

 B15852

 B19A98

 B14740

 B1ABAA

 B1372E

 B1BBBC

 B1261D

 B1CCCE

 B1160B

 B1DCDF

 B10C00

 B1EDF1

 B1FDFF

 B1FFFF

# Harmonies

## Analogous

The Analogous color harmony consists of three colors that are next to each other on the color wheel.



AF788A



B17975



A97E65

# Triad

The Triadic color harmony groups three colors that are evenly spaced from another and form a triangle on the color wheel.



B17975



6A9070



6A8AB1

# Complementary

The Complementary color scheme is a pair of colors which are on the opposite of each other on the color wheel.



B17975



75ADB1

# Split Complementary

Split-complementary colors differ from the complementary color scheme. The scheme consists of three colors, the original color and two neighbors of the complement color.



4F8FAA



B17975



539385

# Square

The Square scheme is like the rectangle color scheme, but the four colors are evenly spaced on the color wheel.



B17975



828C62



46929A



8882AC

# Rectangle

The Rectangle color scheme consists of four colors that form a rectangle on the color wheel.



B17975



9E835F



46929A



608CB0



# Sweetspot

The Sweet Spot groups the original color and five complimentary colors.



B17975



E6D0CF



B175AD



736665



F2F2F2



737373



# Same Dimension

The Same Dimension uses a secret algorithm to generate beautiful new colors.



B17975



E68E87



B19775



595150



990A00



1A0200



# Inverse Universe

The Inverse Universe completely reimagines the original color for something new.



75ADB1



87DFE6



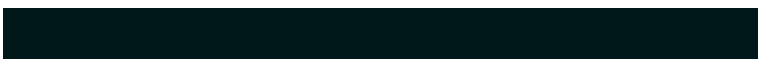
758FB1



505959



008F99

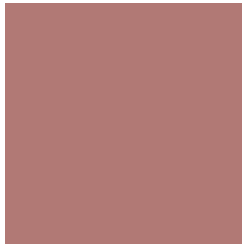


00181A



# Previews

## White Background



This preview shows how the Hex color B17975 looks on a white background.

## Color Contrast Check

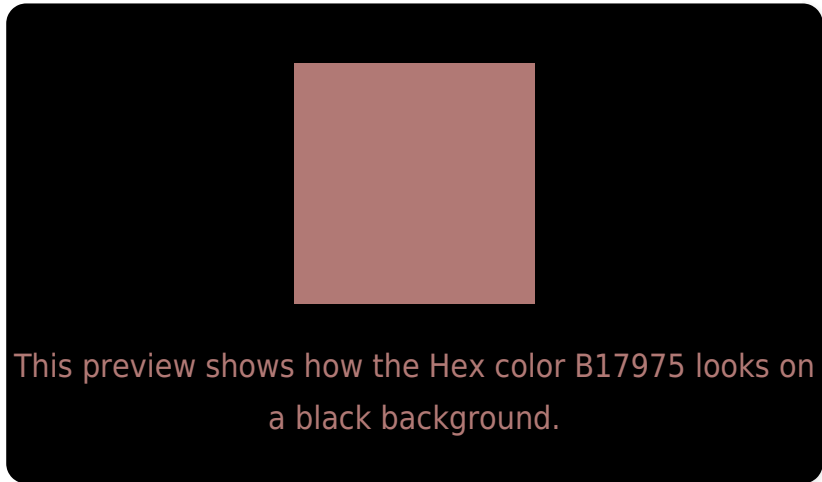
Large Text (above 18pt) WCAG AA ✓ Pass

Any Text WCAG AA ✗ Fail

Large Text (above 18pt) WCAG AAA ✗ Fail

Any Text WCAG AAA ✗ Fail

# Black Background



## Color Contrast Check

Large Text (above 18pt) WCAG AA ✓ Pass

Any Text WCAG AA ✓ Pass

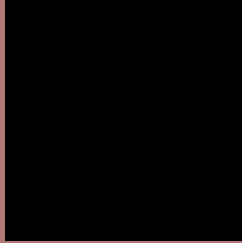
Large Text (above 18pt) WCAG AAA ✓ Pass

Any Text WCAG AAA × Fail

If you want to check with other color combinations, try the [Color Contrast Checker](#).



## Hex B17975 Background



This preview shows how black text looks on a background with the Hex color B17975.



This preview shows how white text looks on a background with the Hex color B17975.

# Color Blindness Simulation

Color vision deficiency is a very complex topic, and I could not describe the different causes any better than Wikipedia does, so if you want to learn more, you should check out their [article about color blindness](#).

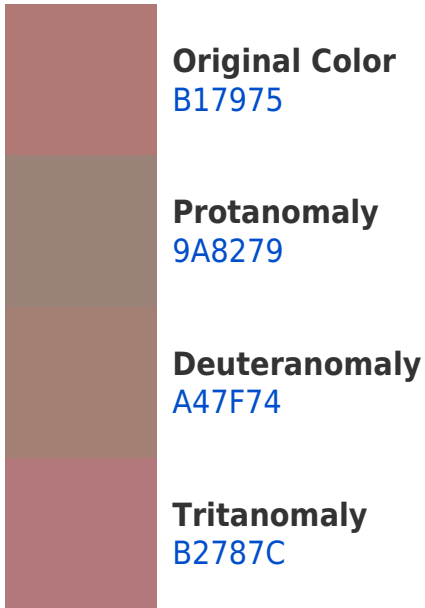
## Dichromacy



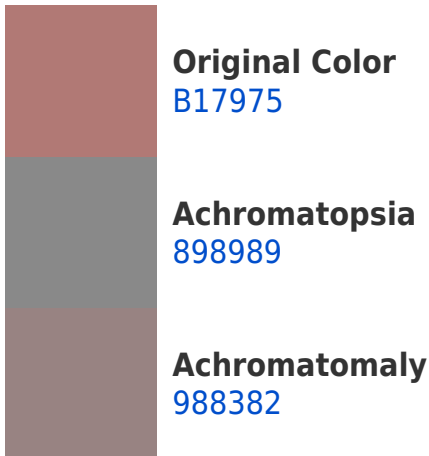


**Tritanopia**  
B27780

# Trichromacy



# Monochromacy



# CSS Examples

## Text

The CSS property to change the color of the text to Hex B17975 is called "color". The color property can be set on classes, ids or directly on the HTML element.

This example shows how text in the color #B17975 looks like.

```
.text, #text, p{  
    color:#B17975  
}
```

If you want to add a text shadow in that color use the text-shadow property, you can generate a text shadow directly with our [CSS Text Shadow Generator](#).

Here you see how black text with a 4 pixel #B17975 colored shadow looks like.

```
.shadow{ text-shadow: 4px 4px 2px #B17975
}
```

## Border

The CSS property to change the border of an element to Hex B17975 is called "border". The border property can be set on classes, ids or directly on the HTML element.

This example shows the color as border, it can be applied via the CSS property "border" or "border-color".

```
.border, #border, table{ border:4px solid
#B17975 }
```

If only the border color should be changed use the property `border-color`.

```
.border{ border-color:#B17975 }
```

If you want to add a box shadow in that color use:

Here you see how a box with a 4 pixel #B17975 colored shadow looks like.

```
.boxshadow{ -moz-box-shadow:4px 4px 4px  
4px #B17975; -webkit-box-shadow:4px 4px  
4px 4px #B17975; box-shadow:4px 4px 4px  
4px #B17975 }
```

# Background

The CSS property to change the background color of an element to Hex B17975 is called "background". The background property can be set on classes, ids or directly on the HTML element.

```
.background, #background, body{  
background:#B17975 }
```

If only the background color should be changed can be used:

```
.background{ background-color:#B17975 }
```

This example shows the color as background, it is applied via the CSS property "background".

To optimize and compress your CSS code, you can use our [online CSS compressor and optimizer](#) based on csstidy. If you want to create a linear or radial gradient as background or border, check our [CSS Gradient Generator](#).



Hey! You found this booklet interesting? Support Converting Colors with the new Membership Option!

The pro membership hides all ads, plus gives you double the colors in the color bucket, and more awesome pro features!

**[Learn more, Memberships starting at \\$2.50/m!](#)**

**Follow me  
on Twitter!**

@ConvertingColor