

# Converting Colors

Hex(B18257)

Have a look what the booklet for  
Hex(B18257) contains.

<b>Hex(B18257)</b> .....	3
<b><i>Conversions</i></b> .....	4
<b><i>Details</i></b> .....	6
<b><i>Harmonies</i></b> .....	11
<b><i>Previews</i></b> .....	23
<b><i>Color Blindness Simulation</i></b> .....	26
<b><i>CSS Examples</i></b> .....	29

**Color**

**Hex(B18257)**

# Conversions

## Conversions Part 1

Format	Color
Hex	B18257
RGB	177, 130, 87
RGB Percent	69%, 51%, 34%
CMY	0.3059, 0.4902, 0.6588
CMYK	0.00, 0.27, 0.51, 0.31
HSL	29°, 37%, 52%
HSV	29°, 51%, 69%
XYZ	27.8344, 26.0005, 12.5684
YIQ	139.1510, 41.8150, -3.4090

# Conversions

## Conversions Part 2

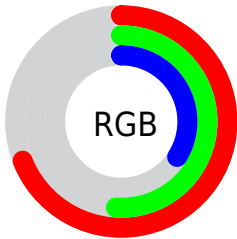
<b>Format</b>	<b>Color</b>
<b>RYB</b>	177, 169, 87
Decimal	11633239
CIELab	58.04, 12.91, 30.27
CIELCh	58, 32.908, 66.905
Yxy	26.0005, 0.4192, 0.3916
Android (android.graphics.Color)	4289823319 (0xFFB18257)
YUV	139.1510, -25.7104, 33.1936
Hunter-Lab	50.9907, 8.2045, 21.0794

# Details

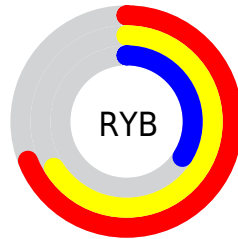
The Hex color **B18257** is a dark color, and the websafe version is hex **CC9966**. A complement of this color would be **5786B1**, and the grayscale version is **8B8B8B**.

A 20% lighter version of the original color is **EBB789**, and **7A5128** is the 20% darker color. If you saturate the color by 10%, you get **B17945**, and if you desaturate by 10%, it is **B18B69**.

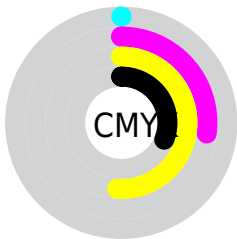
# Distribution



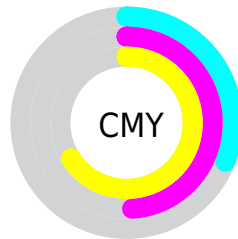
- Red (69%)
- Green (51%)
- Blue (34%)



- Red (69%)
- Yellow (66%)
- Blue (34%)



- Cyan (0%)
- Magenta (27%)
- Yellow (51%)
- Black (31%)



- Cyan (31%)
- Magenta (49%)
- Yellow (66%)

# Brightness & Saturation Gradients

These gradients show how the Hex color B18257 changes by changing the brightness by 10 percent. The first figure shows a shift by +10% for each color and the second figure -10%.

Similar to the brightness gradients but the following saturation gradients show a change of the Hex color B18257 by changing the saturation by 10% instead.





B18257



B18257

FFFFFF



95693F



EBB789



7A5128



FFD3A4



5F3A12



FFEFBF



462400



FFFFDB



2C1000



FFFFF8



0C0000



000000



B18257



B18257



B17945



B18B69

 B17034

 B1947A

 B16622

 B19E8C

 B15D10

 B1A79E

 B15500

 B1B0B0

 B1B9C1

 B1C3D3

 B1CCE5

 B1D5F6

# Harmonies

## Analogous

The Analogous color harmony consists of three colors that are next to each other on the color wheel.



C1796A



B18257



988C52

# Triad

The Triadic color harmony groups three colors that are evenly spaced from another and form a triangle on the color wheel.



B18257



2C9B91



9782BA

# Complementary

The Complementary color scheme is a pair of colors which are on the opposite of each other on the color wheel.



B18257



5786B1

# Split Complementary

Split-complementary colors differ from the complementary color scheme. The scheme consists of three colors, the original color and two neighbors of the complement color.



6D8CC4



B18257



059AAD

# Square

The Square scheme is like the rectangle color scheme, but the four colors are evenly spaced on the color wheel.



B18257



559974



3995C0



B578A3

# Rectangle

The Rectangle color scheme consists of four colors that form a rectangle on the color wheel.



B18257



849257



3995C0



8A85BF



# Sweetspot

The Sweet Spot groups the original color and five complimentary colors.



B18257



E6D4C3



B15787



73685E



F2F2F2



737373



# Same Dimension

The Same Dimension uses a secret algorithm to generate beautiful new colors.



B18257



E69C5A



B1AE57



595550



994900



1A0C00



# Inverse Universe

The Inverse Universe completely reimagines the original color for something new.



5786B1



5AA3E6



575AB1



505559



005099

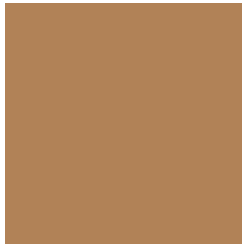


000D1A



# Previews

## White Background



This preview shows how the Hex color B18257 looks on a white background.

## Color Contrast Check

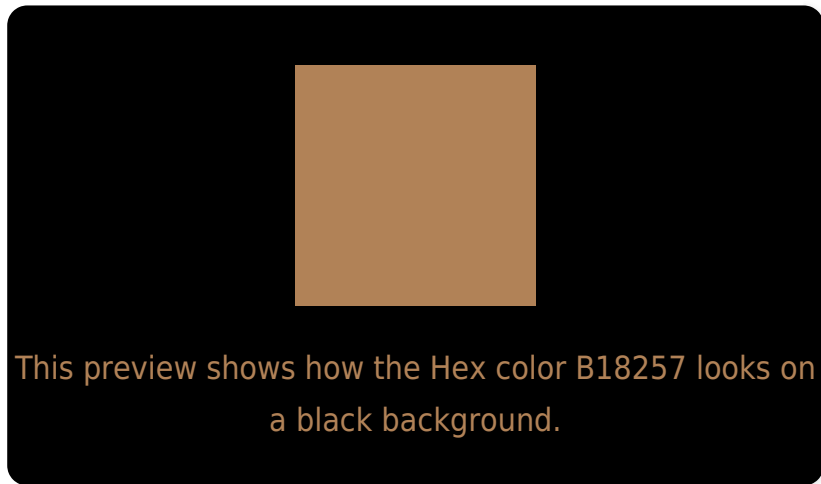
Large Text (above 18pt) WCAG AA ✓ Pass

Any Text WCAG AA ✗ Fail

Large Text (above 18pt) WCAG AAA ✗ Fail

Any Text WCAG AAA ✗ Fail

# Black Background



## Color Contrast Check

Large Text (above 18pt) WCAG AA ✓ Pass

Any Text WCAG AA ✓ Pass

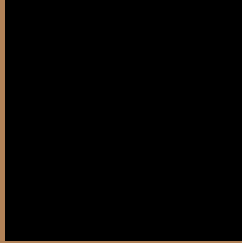
Large Text (above 18pt) WCAG AAA ✓ Pass

Any Text WCAG AAA × Fail

If you want to check with other color combinations, try the [Color Contrast Checker](#).



## Hex B18257 Background



This preview shows how black text looks on a background with the Hex color B18257.



This preview shows how white text looks on a background with the Hex color B18257.

# Color Blindness Simulation

Color vision deficiency is a very complex topic, and I could not describe the different causes any better than Wikipedia does, so if you want to learn more, you should check out their [article about color blindness](#).


## Dichromacy



**Original Color**  
B18257

**Protanopia**  
988C5B

**Deuteranopia**  
A98556



**Tritanopia**  
B57C86

# Trichromacy



**Original Color**  
B18257

**Protanomaly**  
A1885A

**Deuteranomaly**  
AC8456

**Tritanomaly**  
B47E75

# Monochromacy



**Original Color**  
B18257

**Achromatopsia**  
8B8B8B

**Achromatomaly**  
998878

# CSS Examples

## Text

The CSS property to change the color of the text to Hex B18257 is called "color". The color property can be set on classes, ids or directly on the HTML element.

This example shows how text in the color #B18257 looks like.

```
.text, #text, p{  
    color:#B18257  
}
```

If you want to add a text shadow in that color use the text-shadow property, you can generate a text shadow directly with our [CSS Text Shadow Generator](#).

Here you see how black text with a 4 pixel #B18257 colored shadow looks like.

```
.shadow{ text-shadow: 4px 4px 2px #B18257
}
```

## Border

The CSS property to change the border of an element to Hex B18257 is called "border". The border property can be set on classes, ids or directly on the HTML element.

This example shows the color as border, it can be applied via the CSS property "border" or "border-color".

```
.border, #border, table{ border:4px solid
#B18257 }
```

If only the border color should be changed use the property border-color.

```
.border{ border-color:#B18257 }
```

If you want to add a box shadow in that color use:

Here you see how a box with a 4 pixel #B18257 colored shadow looks like.

```
.boxshadow{ -moz-box-shadow:4px 4px 4px  
4px #B18257; -webkit-box-shadow:4px 4px  
4px 4px #B18257; box-shadow:4px 4px 4px  
4px #B18257 }
```

# Background

The CSS property to change the background color of an element to Hex B18257 is called "background". The background property can be set on classes, ids or directly on the HTML element.

```
.background, #background, body{  
background:#B18257 }
```

If only the background color should be changed can be used:

```
.background{ background-color:#B18257 }
```

This example shows the color as background, it is applied via the CSS property "background".

To optimize and compress your CSS code, you can use our [online CSS compressor and optimizer](#) based on csstidy. If you want to create a linear or radial gradient as background or border, check our [CSS Gradient Generator](#).



Hey! You found this booklet interesting? Support Converting Colors with the new Membership Option!

The pro membership hides all ads, plus gives you double the colors in the color bucket, and more awesome pro features!

**[Learn more, Memberships starting at \\$2.50/m!](#)**

**Follow me  
on Twitter!**

@ConvertingColor