

# Converting Colors

Hex(B18293)

Have a look what the booklet for  
Hex(B18293) contains.

<b>Hex(B18293)</b> .....	3
<i><b>Conversions</b></i> .....	4
<i><b>Details</b></i> .....	6
<i><b>Harmonies</b></i> .....	11
<i><b>Previews</b></i> .....	23
<i><b>Color Blindness Simulation</b></i> .....	26
<i><b>CSS Examples</b></i> .....	29

# **Color**

**Hex(B18293)**

# Conversions

## Conversions Part 1

<b>Format</b>	<b>Color</b>
Hex	<a href="#">B18293</a>
RGB	<a href="#">177, 130, 147</a>
RGB Percent	<a href="#">69%, 51%, 58%</a>
CMY	<a href="#">0.3059, 0.4902, 0.4235</a>
CMYK	<a href="#">0.00, 0.27, 0.17, 0.31</a>
HSL	<a href="#">338°, 23%, 60%</a>
HSV	<a href="#">338°, 27%, 69%</a>
XYZ	<a href="#">31.3806, 27.4190, 31.2422</a>
YIQ	<a href="#">145.9910, 22.5550, 15.2510</a>

# Conversions

## Conversions Part 2

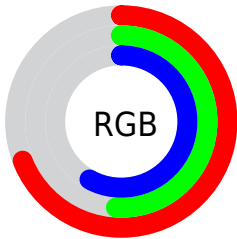
Format	Color
<a href="#">RYB</a>	<a href="#">177, 130, 147</a>
Decimal	<a href="#">11633299</a>
CIELab	<a href="#">59.36, 20.75, -1.98</a>
CIElCh	<a href="#">59, 20.843, 354.542</a>
Yxy	<a href="#">27.4190, 0.3485, 0.3045</a>
Android (android.graphics.Color)	<a href="#">4289823379</a> ( <a href="#">0xFFB18293</a> )
YUV	<a href="#">145.9910, 0.4974, 27.1949</a>
Hunter-Lab	<a href="#">52.3631, 15.3373, 1.2791</a>

# Details

The Hex color **B18293** is a light color, and the websafe version is hex **CC9999**. A complement of this color would be **82B1A0**, and the grayscale version is **929292**.

A 20% lighter version of the original color is **E9B7C9**, and **7C5061** is the 20% darker color. If you saturate the color by 10%, you get **B17088**, and if you desaturate by 10%, it is **B1949E**.

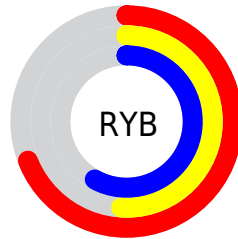
# Distribution



Red (69%)

Green (51%)

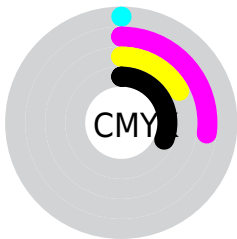
Blue (58%)



Red (69%)

Yellow (51%)

Blue (58%)

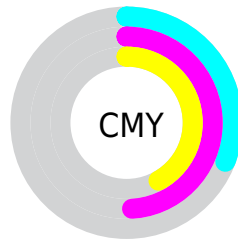


Cyan (0%)

Magenta (27%)

Yellow (17%)

Black (31%)



Cyan (31%)

Magenta (49%)

Yellow (42%)

# Brightness & Saturation Gradients

These gradients show how the Hex color B18293 changes by changing the brightness by 10 percent. The first figure shows a shift by +10% for each color and the second figure -10%.

Similar to the brightness gradients but the following saturation gradients show a change of the Hex color B18293 by changing the saturation by 10% instead.



 B18293

 B18293

FFFFFF

 966979

 E9B7C9

 7C5061

 FFD3E5

 623949

 FFEFFF

 492232

 320D1D

 1F0003

 000000

 B18293

 B18293

 B17088

 B1949E

 B15F7C

 B1A5AA

 B14D71

 B1B7B5

 B13B66

 B1C9C0

 B1295B

 B1DACB

 B1184F

 B1ECD7

 B10644

 B1FEE2

 B10040

 B1FFED

 B1FFF9

# Harmonies

## Analogous

The Analogous color harmony consists of three colors that are next to each other on the color wheel.



A385A4



B18293



B48281

# Triad

The Triadic color harmony groups three colors that are evenly spaced from another and form a triangle on the color wheel.



B18293



8D926D



6096AC

# Complementary

The Complementary color scheme is a pair of colors which are on the opposite of each other on the color wheel.



B18293



82B1A0

# Split Complementary

Split-complementary colors differ from the complementary color scheme. The scheme consists of three colors, the original color and two neighbors of the complement color.



5A999D



B18293



789779

# Square

The Square scheme is like the rectangle color scheme, but the four colors are evenly spaced on the color wheel.



B18293



A08D6B



65998B



7492B3

# Rectangle

The Rectangle color scheme consists of four colors that form a rectangle on the color wheel.



B18293



B18576



65998B



5C98A8



# Sweetspot

The Sweet Spot groups the original color and five complimentary colors.



B18293



E6D3DA



A082B1



73676B



F2F2F2



737373



# Same Dimension

The Same Dimension uses a secret algorithm to generate beautiful new colors.



B18293



E69CB7



B18882



595054



990037



1A0009



# Inverse Universe

The Inverse Universe completely reimagines the original color for something new.



B18293



E69CB7



82ABB1



595054



990037

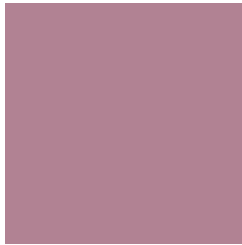


1A0009



# Previews

## White Background



This preview shows how the Hex color B18293 looks on a white background.

## Color Contrast Check

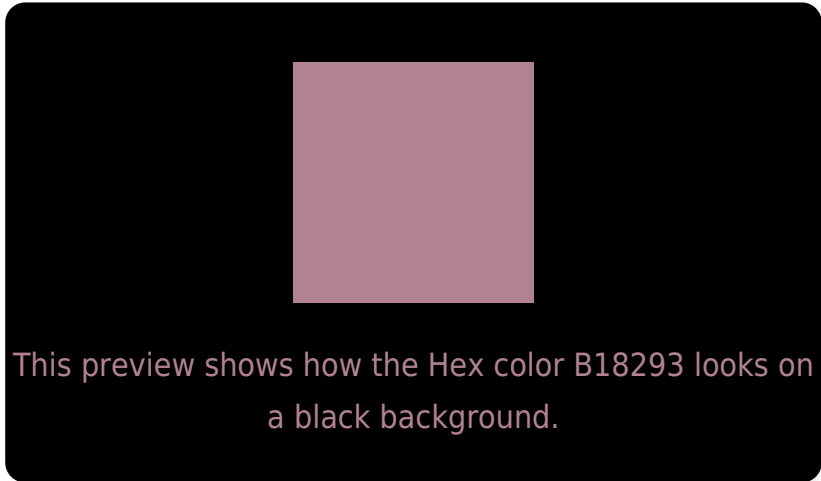
Large Text (above 18pt) WCAG AA ✓ Pass

Any Text WCAG AA × Fail

Large Text (above 18pt) WCAG AAA × Fail

Any Text WCAG AAA × Fail

# Black Background



## Color Contrast Check

Large Text (above 18pt) WCAG AA ✓ Pass

Any Text WCAG AA ✓ Pass

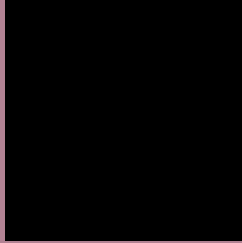
Large Text (above 18pt) WCAG AAA ✓ Pass

Any Text WCAG AAA × Fail

If you want to check with other color combinations, try the [Color Contrast Checker](#).



## Hex B18293 Background



This preview shows how black text looks on a background with the Hex color B18293.



This preview shows how white text looks on a background with the Hex color B18293.

# Color Blindness Simulation

Color vision deficiency is a very complex topic, and I could not describe the different causes any better than Wikipedia does, so if you want to learn more, you should check out their [article about color blindness](#).


## Dichromacy



**Original Color**  
B18293

**Protanopia**  
8F8E9A

**Deuteranopia**  
9C8B91



**Tritanopia**  
B0838D

# Trichromacy



**Original Color**

B18293

**Protanomaly**

9B8A97

**Deuteranomaly**

A48892

**Tritanomaly**

B0838F

# Monochromacy



**Original Color**

B18293

**Achromatopsia**

929292

**Achromatomaly**

9D8C92

# CSS Examples

## Text

The CSS property to change the color of the text to Hex B18293 is called "color". The color property can be set on classes, ids or directly on the HTML element.

This example shows how text in the color #B18293 looks like.

```
.text, #text, p{  
    color:#B18293  
}
```

If you want to add a text shadow in that color use the text-shadow property, you can generate a text shadow directly with our [CSS Text Shadow Generator](#).

Here you see how black text with a 4 pixel #B18293 colored shadow looks like.

```
.shadow{ text-shadow: 4px 4px 2px #B18293
}
```

## Border

The CSS property to change the border of an element to Hex B18293 is called "border". The border property can be set on classes, ids or directly on the HTML element.

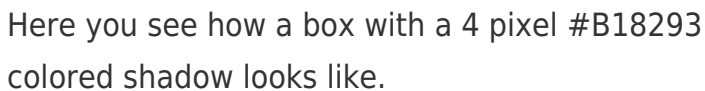
This example shows the color as border, it can be applied via the CSS property "border" or "border-color".

```
.border, #border, table{ border:4px solid
#B18293 }
```

If only the border color should be changed use the property `border-color`.

```
.border{ border-color:#B18293 }
```

If you want to add a box shadow in that color use:



Here you see how a box with a 4 pixel #B18293 colored shadow looks like.

```
.boxshadow{ -moz-box-shadow:4px 4px 4px  
4px #B18293; -webkit-box-shadow:4px 4px  
4px 4px #B18293; box-shadow:4px 4px 4px  
4px #B18293 }
```

# Background

The CSS property to change the background color of an element to Hex B18293 is called "background". The background property can be set on classes, ids or directly on the HTML element.

```
.background, #background, body{  
background:#B18293 }
```

If only the background color should be changed can be used:

```
.background{ background-color:#B18293 }
```

This example shows the color as background, it is applied via the CSS property "background".

To optimize and compress your CSS code, you can use our [online CSS compressor and optimizer](#) based on csstidy. If you want to create a linear or radial gradient as background or border, check our [CSS Gradient Generator](#).



Hey! You found this booklet interesting? Support Converting Colors with the new Membership Option!

The pro membership hides all ads, plus gives you double the colors in the color bucket, and more awesome pro features!

**[Learn more, Memberships starting at \\$2.50/m!](#)**

**Follow me  
on Twitter!**

@ConvertingColor