

# Converting Colors

Hex(B1838E)

Have a look what the booklet for  
Hex(B1838E) contains.

<b>Hex(B1838E)</b> .....	3
<i><b>Conversions</b></i> .....	4
<i><b>Details</b></i> .....	6
<i><b>Harmonies</b></i> .....	11
<i><b>Previews</b></i> .....	23
<i><b>Color Blindness Simulation</b></i> .....	26
<i><b>CSS Examples</b></i> .....	29

# **Color**

**Hex(B1838E)**

# Conversions

## Conversions Part 1

Format	Color
Hex	B1838E
RGB	177, 131, 142
RGB Percent	69%, 51%, 56%
CMY	0.3059, 0.4863, 0.4431
CMYK	0.00, 0.26, 0.20, 0.31
HSL	346°, 23%, 60%
HSV	346°, 26%, 69%
XYZ	31.1302, 27.5327, 29.2648
YIQ	146.0080, 23.8850, 13.1730

# Conversions

## Conversions Part 2

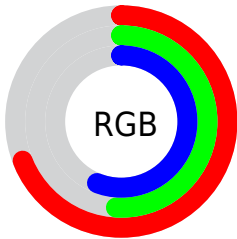
<b>Format</b>	<b>Color</b>
<b>RYB</b>	177, 131, 142
Decimal	11633550
CIELab	59.46, 19.38, 1.04
CIELCh	59, 19.406, 3.074
Yxy	27.5327, 0.3540, 0.3131
Android (android.graphics.Color)	4289823630 (0xFFB1838E)
YUV	146.0080, -1.9759, 27.1800
Hunter-Lab	52.4716, 14.0748, 3.6626

# Details

The Hex color **B1838E** is a light color, and the websafe version is hex **CC9999**. A complement of this color would be **83B1A6**, and the grayscale version is **929292**.

A 20% lighter version of the original color is **E9B8C4**, and **7C515C** is the 20% darker color. If you saturate the color by 10%, you get **B17181**, and if you desaturate by 10%, it is **B1959B**.

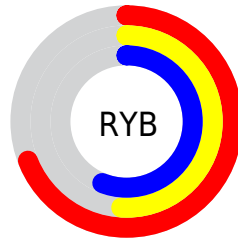
# Distribution



Red (69%)

Green (51%)

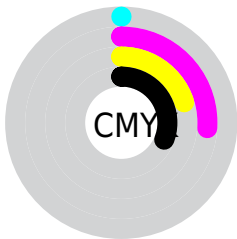
Blue (56%)



Red (69%)

Yellow (51%)

Blue (56%)

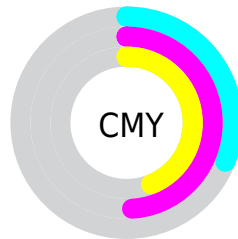


Cyan (0%)

Magenta (26%)

Yellow (20%)

Black (31%)



Cyan (31%)

Magenta (49%)


Yellow (44%)

# Brightness & Saturation Gradients

These gradients show how the Hex color B1838E changes by changing the brightness by 10 percent. The first figure shows a shift by +10% for each color and the second figure -10%.

Similar to the brightness gradients but the following saturation gradients show a change of the Hex color B1838E by changing the saturation by 10% instead.



 B1838E

 B1838E

FFFFFF

 966A74

 E9B8C4

 7C515C

 FFD4E0

 623A44

 FFF0FC

 49232E

 320E1A

 1F0001

 000000

 B1838E

 B1838E

 B17181

 B1959B

 B16073

 B1A6A9

 B14E66

 B1B8B6

 B13C58

 B1CAC4

 B12A4B

 B1DBD1

 B1193D

 B1EDDF

 B10730

 B1FFEC

 B1002A

 B1FFFA

 B1FFFF

# Harmonies

## Analogous

The Analogous color harmony consists of three colors that are next to each other on the color wheel.



A7859F



B1838E



B2847D

# Triad

The Triadic color harmony groups three colors that are evenly spaced from another and form a triangle on the color wheel.



B1838E



889472



6995AD

# Complementary

The Complementary color scheme is a pair of colors which are on the opposite of each other on the color wheel.



B1838E



83B1A6

# Split Complementary

Split-complementary colors differ from the complementary color scheme. The scheme consists of three colors, the original color and two neighbors of the complement color.



5F98A1



B1838E



74977F

# Square

The Square scheme is like the rectangle color scheme, but the four colors are evenly spaced on the color wheel.



B1838E



9A8F6D



659990



7D90B1

# Rectangle

The Rectangle color scheme consists of four colors that form a rectangle on the color wheel.



B1838E



AD8775



659990



6496AA



# Sweetspot

The Sweet Spot groups the original color and five complimentary colors.



B1838E



E6D3D8



A583B1



73676A



F2F2F2



737373



# Same Dimension

The Same Dimension uses a secret algorithm to generate beautiful new colors.



B1838E



E69EAF



B18E83



595052



990025



1A0006



# Inverse Universe

The Inverse Universe completely reimagines the original color for something new.



B1838E



E69EAF



83A5B1



595052



990025

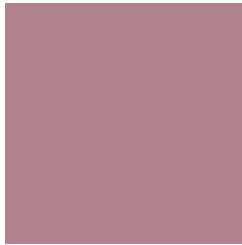


1A0006



# Previews

## White Background



This preview shows how the Hex color B1838E looks on a white background.

## Color Contrast Check

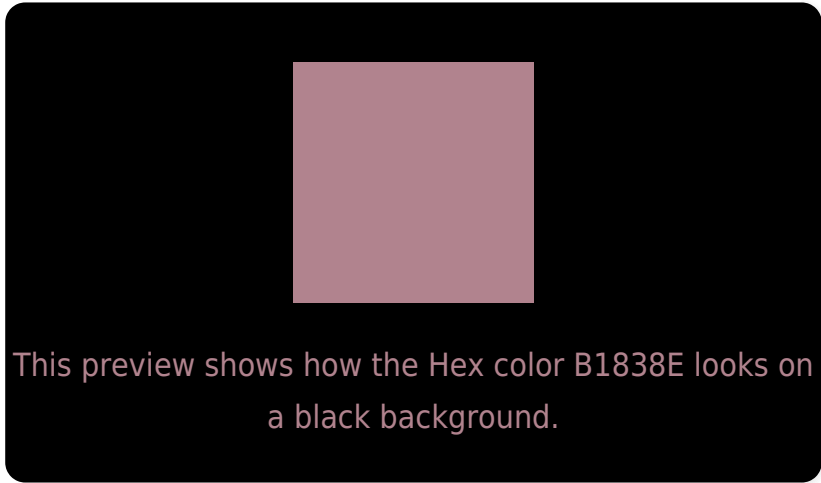
Large Text (above 18pt) WCAG AA ✓ Pass

Any Text WCAG AA ✗ Fail

Large Text (above 18pt) WCAG AAA ✗ Fail

Any Text WCAG AAA ✗ Fail

# Black Background



## Color Contrast Check

Large Text (above 18pt) WCAG AA ✓ Pass

Any Text WCAG AA ✓ Pass

Large Text (above 18pt) WCAG AAA ✓ Pass

Any Text WCAG AAA × Fail

If you want to check with other color combinations, try the [Color Contrast Checker](#).



## Hex B1838E Background



This preview shows how black text looks on a background with the Hex color B1838E.




This preview shows how white text looks on a background with the Hex color B1838E.

# Color Blindness Simulation

Color vision deficiency is a very complex topic, and I could not describe the different causes any better than Wikipedia does, so if you want to learn more, you should check out their [article about color blindness](#).

## Dichromacy





**Tritanopia**  
B1838D

# Trichromacy



**Original Color**  
B1838E

**Protanomaly**  
9C8B92

**Deuteranomaly**  
A5888D

**Tritanomaly**  
B1838D

# Monochromacy



**Original Color**  
B1838E

**Achromatopsia**  
929292

**Achromatomaly**  
9D8D91

# CSS Examples

## Text

The CSS property to change the color of the text to Hex B1838E is called "color". The color property can be set on classes, ids or directly on the HTML element.

This example shows how text in the color #B1838E looks like.

```
.text, #text, p{  
    color:#B1838E  
}
```

If you want to add a text shadow in that color use the text-shadow property, you can generate a text shadow directly with our [CSS Text Shadow Generator](#).

Here you see how black text with a 4 pixel #B1838E colored shadow looks like.

```
.shadow{ text-shadow: 4px 4px 2px #B1838E
}
```

## Border

The CSS property to change the border of an element to Hex B1838E is called "border". The border property can be set on classes, ids or directly on the HTML element.

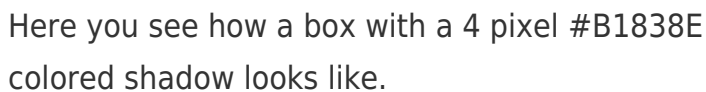
This example shows the color as border, it can be applied via the CSS property "border" or "border-color".

```
.border, #border, table{ border:4px solid
#B1838E }
```

If only the border color should be changed use the property `border-color`.

```
.border{ border-color:#B1838E }
```

If you want to add a box shadow in that color use:



Here you see how a box with a 4 pixel #B1838E colored shadow looks like.

```
.boxshadow{ -moz-box-shadow:4px 4px 4px  
4px #B1838E; -webkit-box-shadow:4px 4px  
4px 4px #B1838E; box-shadow:4px 4px 4px  
4px #B1838E }
```

# Background

The CSS property to change the background color of an element to Hex B1838E is called "background". The background property can be set on classes, ids or directly on the HTML element.

```
.background, #background, body{  
background:#B1838E }
```

If only the background color should be changed can be used:

```
.background{ background-color:#B1838E }
```

This example shows the color as background, it is applied via the CSS property "background".

To optimize and compress your CSS code, you can use our [online CSS compressor and optimizer](#) based on csstidy. If you want to create a linear or radial gradient as background or border, check our [CSS Gradient Generator](#).



Hey! You found this booklet interesting? Support Converting Colors with the new Membership Option!

The pro membership hides all ads, plus gives you double the colors in the color bucket, and more awesome pro features!

**[Learn more, Memberships starting at \\$2.50/m!](#)**

**Follow me  
on Twitter!**

@ConvertingColor