

Converting Colors

Hex(B18590)

Have a look what the booklet for
Hex(B18590) contains.

Hex(B18590)	3
<i>Conversions</i>	4
<i>Details</i>	6
<i>Harmonies</i>	11
<i>Previews</i>	23
<i>Color Blindness Simulation</i>	26
<i>CSS Examples</i>	29

Color

Hex(B18590)

Conversions

Conversions Part 1

Format	Color
Hex	B18590
RGB	177, 133, 144
RGB Percent	69%, 52%, 56%
CMY	0.3059, 0.4784, 0.4353
CMYK	0.00, 0.25, 0.19, 0.31
HSL	345°, 22%, 61%
HSV	345°, 25%, 69%
XYZ	31.5530, 28.1358, 30.1533
YIQ	147.4100, 22.6930, 12.7490

Conversions

Conversions Part 2

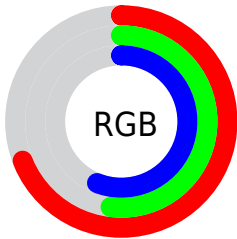
Format	Color
R_{YB}	177, 133, 144
Decimal	11634064
CIE _{Lab}	60.01, 18.57, 0.69
CIE _{LCh}	60, 18.587, 2.130
Yxy	28.1358, 0.3512, 0.3132
Android (android.graphics.Color)	4289824144 (0xFFB18590)
YUV	147.4100, -1.6811, 25.9504
Hunter-Lab	53.0432, 13.3562, 3.4258

Details

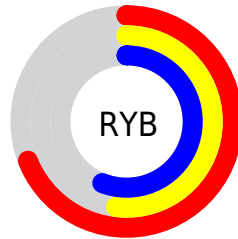
The Hex color **B18590** is a light color, and the websafe version is hex **CC9999**. A complement of this color would be **85B1A6**, and the grayscale version is **939393**.

A 20% lighter version of the original color is **E9BAC6**, and **7C535E** is the 20% darker color. If you saturate the color by 10%, you get **B17383**, and if you desaturate by 10%, it is **B1979D**.

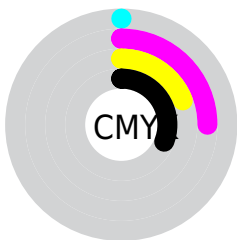
Distribution



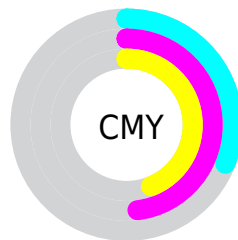
- Red (69%)
- Green (52%)
- Blue (56%)



- Red (69%)
- Yellow (52%)
- Blue (56%)



- Cyan (0%)
- Magenta (25%)
- Yellow (19%)
- Black (31%)




- Cyan (31%)
- Magenta (48%)
- Yellow (44%)

Brightness & Saturation Gradients

These gradients show how the Hex color B18590 changes by changing the brightness by 10 percent. The first figure shows a shift by +10% for each color and the second figure -10%.

Similar to the brightness gradients but the following saturation gradients show a change of the Hex color B18590 by changing the saturation by 10% instead.

 B18590

 B18590

FFFFFF

 966C76

 E9BAC6

 7C535E

 FFD6E2

 623C46

 FFF3FE

 4A2530

 32101B

 200001

 000000

 B18590

 B18590

 B17383

 B1979D

 B16275

 B1A8AB

 B15068

 B1BAB8

 B13E5B

 B1CCC5

 B12D4E

 B1DED2

 B11B40

 B1EFEO

 B10933

 B1FFED

 B1002C

 B1FFFA

 B1FFFF

Harmonies

Analogous

The Analogous color harmony consists of three colors that are next to each other on the color wheel.



A787A0



B18590



B28680

Triad

The Triadic color harmony groups three colors that are evenly spaced from another and form a triangle on the color wheel.



B18590



8A9575



6C96AD

Complementary

The Complementary color scheme is a pair of colors which are on the opposite of each other on the color wheel.



B18590



85B1A6

Split Complementary

Split-complementary colors differ from the complementary color scheme. The scheme consists of three colors, the original color and two neighbors of the complement color.



6399A1



B18590



779881

Square

The Square scheme is like the rectangle color scheme, but the four colors are evenly spaced on the color wheel.



B18590



9C9070



689A91



7F92B1

Rectangle

The Rectangle color scheme consists of four colors that form a rectangle on the color wheel.



B18590



AE8977



689A91



6798AA

Sweetspot

The Sweet Spot groups the original color and five complimentary colors.



B18590



E6D5D9



A685B1



736A6C



F2F2F2



737373

Same Dimension

The Same Dimension uses a secret algorithm to generate beautiful new colors.



B18590



E6A1B2



B19085



595053



990026



1A0006

Inverse Universe

The Inverse Universe completely reimagines the original color for something new.



B18590



E6A1B2



85A6B1



595053



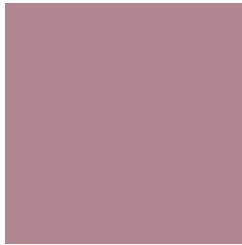
990026



1A0006

Previews

White Background



This preview shows how the Hex color B18590 looks on a white background.

Color Contrast Check

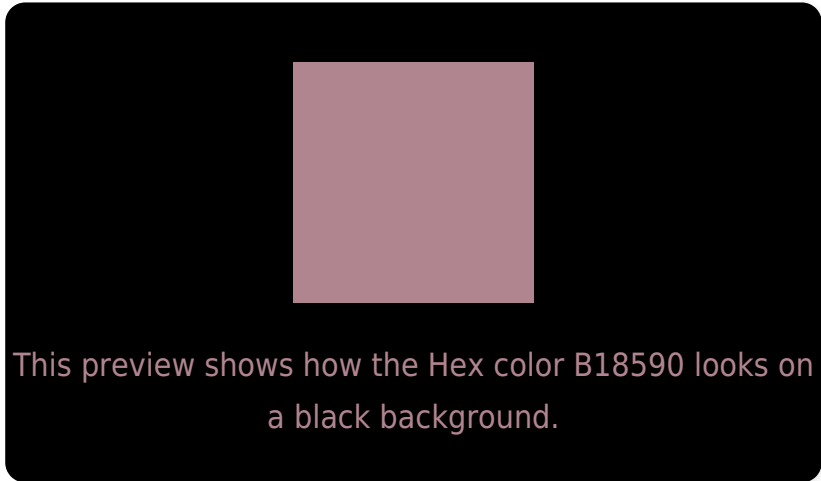
Large Text (above 18pt) WCAG AA ✓ Pass

Any Text WCAG AA × Fail

Large Text (above 18pt) WCAG AAA × Fail

Any Text WCAG AAA × Fail

Black Background



Color Contrast Check

Large Text (above 18pt) WCAG AA ✓ Pass

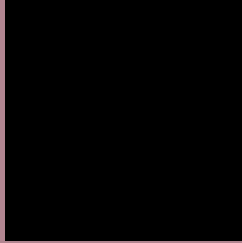
Any Text WCAG AA ✓ Pass

Large Text (above 18pt) WCAG AAA ✓ Pass

Any Text WCAG AAA × Fail

If you want to check with other color combinations, try the [Color Contrast Checker](#).

Hex B18590 Background



This preview shows how black text looks on a background with the Hex color B18590.




This preview shows how white text looks on a background with the Hex color B18590.

Color Blindness Simulation

Color vision deficiency is a very complex topic, and I could not describe the different causes any better than Wikipedia does, so if you want to learn more, you should check out their [article about color blindness](#).

Dichromacy





Tritanopia
B1858F

Trichromacy



Original Color
B18590

Protanomaly
9D8C94

Deuteranomaly
A6898F

Tritanomaly
B1858F

Monochromacy



Original Color
B18590

Achromatopsia
939393

Achromatomaly
9E8E92

CSS Examples

Text

The CSS property to change the color of the text to Hex B18590 is called "color". The color property can be set on classes, ids or directly on the HTML element.

This example shows how text in the color #B18590 looks like.

```
.text, #text, p{  
    color:#B18590  
}
```

If you want to add a text shadow in that color use the text-shadow property, you can generate a text shadow directly with our [CSS Text Shadow Generator](#).

Here you see how black text with a 4 pixel #B18590 colored shadow looks like.

```
.shadow{ text-shadow: 4px 4px 2px #B18590
}
```

Border

The CSS property to change the border of an element to Hex B18590 is called "border". The border property can be set on classes, ids or directly on the HTML element.

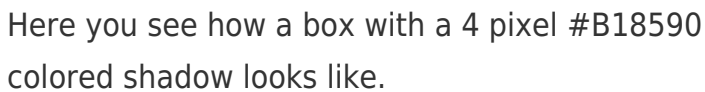
This example shows the color as border, it can be applied via the CSS property "border" or "border-color".

```
.border, #border, table{ border:4px solid
#B18590 }
```

If only the border color should be changed use the property `border-color`.

```
.border{ border-color:#B18590 }
```

If you want to add a box shadow in that color use:



Here you see how a box with a 4 pixel #B18590 colored shadow looks like.

```
.boxshadow{ -moz-box-shadow:4px 4px 4px  
4px #B18590; -webkit-box-shadow:4px 4px  
4px 4px #B18590; box-shadow:4px 4px 4px  
4px #B18590 }
```

Background

The CSS property to change the background color of an element to Hex B18590 is called "background". The background property can be set on classes, ids or directly on the HTML element.

```
.background, #background, body{  
background:#B18590 }
```

If only the background color should be changed can be used:

```
.background{ background-color:#B18590 }
```

This example shows the color as background, it is applied via the CSS property "background".

To optimize and compress your CSS code, you can use our [online CSS compressor and optimizer](#) based on csstidy. If you want to create a linear or radial gradient as background or border, check our [CSS Gradient Generator](#).

Hey! You found this booklet interesting? Support Converting Colors with the new Membership Option!

The pro membership hides all ads, plus gives you double the colors in the color bucket, and more awesome pro features!

[Learn more, Memberships starting at \\$2.50/m!](#)

**Follow me
on Twitter!**

@ConvertingColor