

# Converting Colors

Hex(B18753)

Have a look what the booklet for  
Hex(B18753) contains.

<b>Hex(B18753)</b> .....	3
<b><i>Conversions</i></b> .....	4
<b><i>Details</i></b> .....	6
<b><i>Harmonies</i></b> .....	11
<b><i>Previews</i></b> .....	23
<b><i>Color Blindness Simulation</i></b> .....	26
<b><i>CSS Examples</i></b> .....	29

**Color**

**Hex(B18753)**

# Conversions

## Conversions Part 1

<b>Format</b>	<b>Color</b>
Hex	<a href="#">B18753</a>
RGB	<a href="#">177, 135, 83</a>
RGB Percent	<a href="#">69%, 53%, 33%</a>
CMY	<a href="#">0.3059, 0.4706, 0.6745</a>
CMYK	<a href="#">0.00, 0.24, 0.53, 0.31</a>
HSL	<a href="#">33°, 38%, 51%</a>
HSV	<a href="#">33°, 53%, 69%</a>
XYZ	<a href="#">28.3568, 27.2996, 11.9584</a>
YIQ	<a href="#">141.6300, 41.7240, -7.2680</a>

# Conversions

## Conversions Part 2

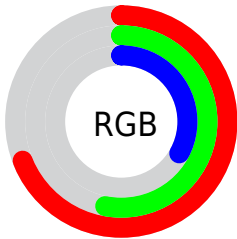
<b>Format</b>	<b>Color</b>
<b>R<sub>YB</sub></b>	159, 177, 83
Decimal	11634515
CIE <sub>Lab</sub>	59.25, 9.74, 33.96
CIE <sub>LCh</sub>	59, 35.334, 73.993
Yxy	27.2996, 0.4194, 0.4038
Android (android.graphics.Color)	4289824595 (0xFFB18753)
YUV	141.6300, -28.9046, 31.0195
Hunter-Lab	52.2490, 5.4404, 23.0044

# Details

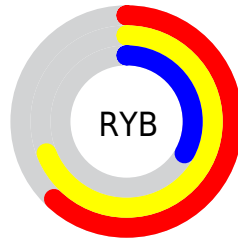
The Hex color **B18753** is a dark color, and the websafe version is hex **CC9966**. A complement of this color would be **537DB1**, and the grayscale version is **8E8E8E**.

A 20% lighter version of the original color is **EBBC86**, and **7A5524** is the 20% darker color. If you saturate the color by 10%, you get **B17F41**, and if you desaturate by 10%, it is **B18F65**.

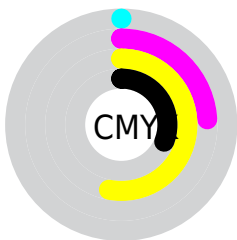
# Distribution



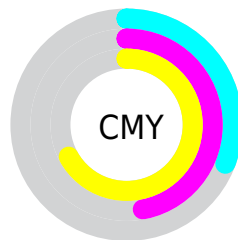
- Red (69%)
- Green (53%)
- Blue (33%)



- Red (62%)
- Yellow (69%)
- Blue (33%)



- Cyan (0%)
- Magenta (24%)
- Yellow (53%)
- Black (31%)



- Cyan (31%)
- Magenta (47%)
- Yellow (67%)

# Brightness & Saturation Gradients

These gradients show how the Hex color B18753 changes by changing the brightness by 10 percent. The first figure shows a shift by +10% for each color and the second figure -10%.

Similar to the brightness gradients but the following saturation gradients show a change of the Hex color B18753 by changing the saturation by 10% instead.



 B18753

 B18753

FFFFFF

 956E3B

 EBBC86

 7A5524

 FFD8A0

 5F3E0C

 FFF4BB

 462800

 FFFFD7

 2C1400

 FFFFF4

 100000

 000000

 B18753

 B18753

 B17F41

 B18F65

 B17730

 B19776

 B16F1E

 B19F88

 B1670C

 B1A79A

 B16200

 B1AFAB

 B1B6BD

 B1BECF

 B1C6E1

 B1CEF2

# Harmonies

## Analogous

The Analogous color harmony consists of three colors that are next to each other on the color wheel.



C57D65



B18753



949151

# Triad

The Triadic color harmony groups three colors that are evenly spaced from another and form a triangle on the color wheel.



B18753



089F9D



A481BB

# Complementary

The Complementary color scheme is a pair of colors which are on the opposite of each other on the color wheel.



B18753



537DB1

# Split Complementary

Split-complementary colors differ from the complementary color scheme. The scheme consists of three colors, the original color and two neighbors of the complement color.



798DCB



B18753



009DB9

# Square

The Square scheme is like the rectangle color scheme, but the four colors are evenly spaced on the color wheel.



B18753



499E7C



3F97CA



C078A1

# Rectangle

The Rectangle color scheme consists of four colors that form a rectangle on the color wheel.



B18753



7E975A



3F97CA



9785C2



# Sweetspot

The Sweet Spot groups the original color and five complimentary colors.



B18753



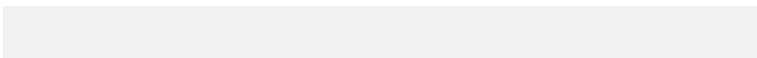
E6D5C1



B1537D



73695D



F2F2F2



737373



# Same Dimension

The Same Dimension uses a secret algorithm to generate beautiful new colors.



B18753



E6A453



ACB153



595550



995500



1A0E00



# Inverse Universe

The Inverse Universe completely reimagines the original color for something new.



537DB1



5394E6



5853B1



505459



004499

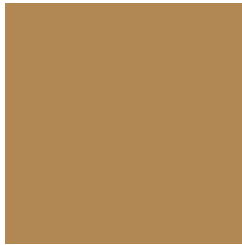


000B1A



# Previews

## White Background



This preview shows how the Hex color B18753 looks on a white background.

## Color Contrast Check

Large Text (above 18pt) WCAG AA ✓ Pass

Any Text WCAG AA × Fail

Large Text (above 18pt) WCAG AAA × Fail

Any Text WCAG AAA × Fail

# Black Background



## Color Contrast Check

Large Text (above 18pt) WCAG AA ✓ Pass

Any Text WCAG AA ✓ Pass

Large Text (above 18pt) WCAG AAA ✓ Pass

Any Text WCAG AAA × Fail

If you want to check with other color combinations, try the [Color Contrast Checker](#).



## Hex B18753 Background



This preview shows how black text looks on a background with the Hex color B18753.



This preview shows how white text looks on a background with the Hex color B18753.

# Color Blindness Simulation

Color vision deficiency is a very complex topic, and I could not describe the different causes any better than Wikipedia does, so if you want to learn more, you should check out their [article about color blindness](#).

## Dichromacy





**Tritanopia**  
B6808A

# Trichromacy



**Original Color**  
B18753

**Protanomaly**  
A48C55

**Deuteranomaly**  
AF8853

**Tritanomaly**  
B48376

# Monochromacy



**Original Color**  
B18753

**Achromatopsia**  
8E8E8E

**Achromatomaly**  
9B8B79

# CSS Examples

## Text

The CSS property to change the color of the text to Hex B18753 is called "color". The color property can be set on classes, ids or directly on the HTML element.

This example shows how text in the color #B18753 looks like.

```
.text, #text, p{  
    color:#B18753  
}
```

If you want to add a text shadow in that color use the text-shadow property, you can generate a text shadow directly with our [CSS Text Shadow Generator](#).

Here you see how black text with a 4 pixel #B18753 colored shadow looks like.

```
.shadow{ text-shadow: 4px 4px 2px #B18753
}
```

## Border

The CSS property to change the border of an element to Hex B18753 is called "border". The border property can be set on classes, ids or directly on the HTML element.

This example shows the color as border, it can be applied via the CSS property "border" or "border-color".

```
.border, #border, table{ border:4px solid
#B18753 }
```

If only the border color should be changed use the property `border-color`.

```
.border{ border-color:#B18753 }
```

If you want to add a box shadow in that color use:

Here you see how a box with a 4 pixel #B18753 colored shadow looks like.

```
.boxshadow{ -moz-box-shadow:4px 4px 4px  
4px #B18753; -webkit-box-shadow:4px 4px  
4px 4px #B18753; box-shadow:4px 4px 4px  
4px #B18753 }
```

# Background

The CSS property to change the background color of an element to Hex B18753 is called "background". The background property can be set on classes, ids or directly on the HTML element.

```
.background, #background, body{  
background:#B18753 }
```

If only the background color should be changed can be used:

```
.background{ background-color:#B18753 }
```

This example shows the color as background, it is applied via the CSS property "background".

To optimize and compress your CSS code, you can use our [online CSS compressor and optimizer](#) based on csstidy. If you want to create a linear or radial gradient as background or border, check our [CSS Gradient Generator](#).



Hey! You found this booklet interesting? Support Converting Colors with the new Membership Option!

The pro membership hides all ads, plus gives you double the colors in the color bucket, and more awesome pro features!

**[Learn more, Memberships starting at \\$2.50/m!](#)**

**Follow me  
on Twitter!**

@ConvertingColor