

# Converting Colors

Hex(B19194)

Have a look what the booklet for  
Hex(B19194) contains.

<b>Hex(B19194)</b> .....	3
<i><b>Conversions</b></i> .....	4
<i><b>Details</b></i> .....	6
<i><b>Harmonies</b></i> .....	11
<i><b>Previews</b></i> .....	23
<i><b>Color Blindness Simulation</b></i> .....	26
<i><b>CSS Examples</b></i> .....	29

# **Color**

**Hex(B19194)**

# Conversions

## Conversions Part 1

Format	Color
Hex	B19194
RGB	177, 145, 148
RGB Percent	69%, 57%, 58%
CMY	0.3059, 0.4314, 0.4196
CMYK	0.00, 0.18, 0.16, 0.31
HSL	354°, 17%, 63%
HSV	354°, 18%, 69%
XYZ	33.6022, 31.7360, 32.3716
YIQ	154.9100, 18.1090, 7.7170

# Conversions

## Conversions Part 2

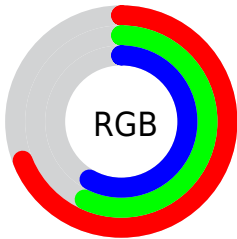
Format	Color
<a href="#">RYB</a>	<a href="#">177, 145, 148</a>
Decimal	<a href="#">11637140</a>
CIELab	<a href="#">63.12, 12.49, 2.94</a>
CIELCh	<a href="#">63, 12.834, 13.225</a>
Yxy	<a href="#">31.7360, 0.3439, 0.3248</a>
Android (android.graphics.Color)	<a href="#">4289827220 (0xFFB19194)</a>
YUV	<a href="#">154.9100, -3.4066, 19.3729</a>
Hunter-Lab	<a href="#">56.3347, 7.8847, 5.3645</a>

# Details

The Hex color **B19194** is a light color, and the websafe version is hex **CC9999**. A complement of this color would be **91B1AE**, and the grayscale version is **9B9B9B**.

A 20% lighter version of the original color is **E9C7CA**, and **7C5E61** is the 20% darker color. If you saturate the color by 10%, you get **B17F84**, and if you desaturate by 10%, it is **B1A3A4**.

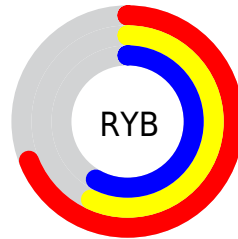
# Distribution



Red (69%)

Green (57%)

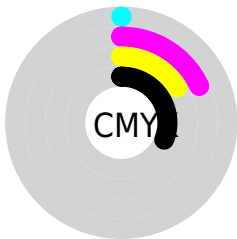
Blue (58%)



Red (69%)

Yellow (57%)

Blue (58%)

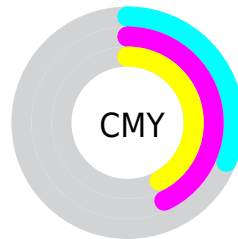


Cyan (0%)

Magenta (18%)

Yellow (16%)

Black (31%)



Cyan (31%)

Magenta (43%)

Yellow (42%)

# Brightness & Saturation Gradients

These gradients show how the Hex color B19194 changes by changing the brightness by 10 percent. The first figure shows a shift by +10% for each color and the second figure -10%.

Similar to the brightness gradients but the following saturation gradients show a change of the Hex color B19194 by changing the saturation by 10% instead.



 B19194

 B19194

FFFFFF

 96777A

 E9C7CA

 7C5E61

 FFE3E6

 63474A

 4A3033

 331B1E

 200105

 000000

 B19194

 B19194

 B17F84

 B1A3A4

 B16E74

 B1B4B4

 B15C64

 B1C6C4

 B14A54

 B1D8D4

 B13944

 B1E9E4

 B12734

 B1FBF4

 B11524

 B1FFFF

 B10314

 B10011

# Harmonies

## Analogous

The Analogous color harmony consists of three colors that are next to each other on the color wheel.



AC92A0



B19194



AF938A

# Triad

The Triadic color harmony groups three colors that are evenly spaced from another and form a triangle on the color wheel.



B19194



8F9D88



859CAE

# Complementary

The Complementary color scheme is a pair of colors which are on the opposite of each other on the color wheel.



B19194



91B1AE

# Split Complementary

Split-complementary colors differ from the complementary color scheme. The scheme consists of three colors, the original color and two neighbors of the complement color.



7D9EA8



B19194



849F92

# Square

The Square scheme is like the rectangle color scheme, but the four colors are evenly spaced on the color wheel.



B19194



9D9A83



7CA09E



9398AF

# Rectangle

The Rectangle color scheme consists of four colors that form a rectangle on the color wheel.



B19194



AB9585



7CA09E



819DAD



# Sweetspot

The Sweet Spot groups the original color and five complimentary colors.



B19194



E6DADB



AE91B1



736C6D



F2F2F2



737373



# Same Dimension

The Same Dimension uses a secret algorithm to generate beautiful new colors.



B19194



E6B3B8



B19E91



595051



99000E



1A0002



# Inverse Universe

The Inverse Universe completely reimagines the original color for something new.



B19194



E6B3B8



91A4B1



595051



99000E

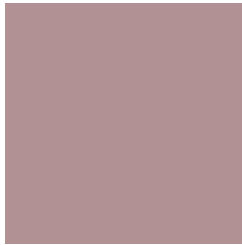


1A0002



# Previews

## White Background



This preview shows how the Hex color B19194 looks on a white background.

## Color Contrast Check

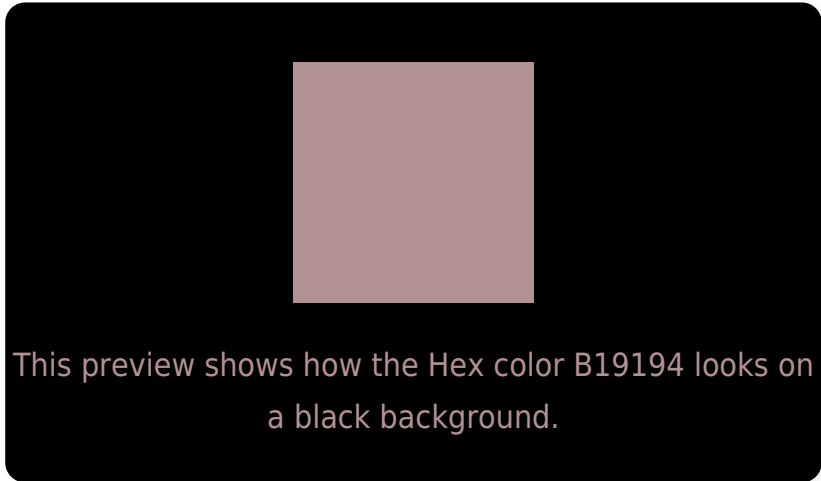
Large Text (above 18pt) WCAG AA × Fail

Any Text WCAG AA × Fail

Large Text (above 18pt) WCAG AAA × Fail

Any Text WCAG AAA × Fail

# Black Background



## Color Contrast Check

Large Text (above 18pt) WCAG AA ✓ Pass

Any Text WCAG AA ✓ Pass

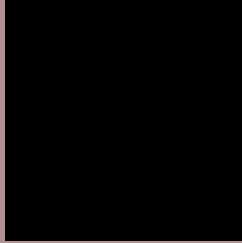
Large Text (above 18pt) WCAG AAA ✓ Pass

Any Text WCAG AAA ✓ Pass

If you want to check with other color combinations, try the [Color Contrast Checker](#).



## Hex B19194 Background



This preview shows how black text looks on a background with the Hex color B19194.



This preview shows how white text looks on a background with the Hex color B19194.

# Color Blindness Simulation

Color vision deficiency is a very complex topic, and I could not describe the different causes any better than Wikipedia does, so if you want to learn more, you should check out their [article about color blindness](#).

## Dichromacy



**Original Color**  
B19194

**Protanopia**  
9C9898

**Deuteranopia**  
AA9493



**Tritanopia**  
B2909B

# Trichromacy



**Original Color**  
B19194

**Protanomaly**  
A49597

**Deuteranomaly**  
AD9393

**Tritanomaly**  
B29098

# Monochromacy



**Original Color**  
B19194

**Achromatopsia**  
9B9B9B

**Achromatomaly**  
A39798

# CSS Examples

## Text

The CSS property to change the color of the text to Hex B19194 is called "color". The color property can be set on classes, ids or directly on the HTML element.

This example shows how text in the color #B19194 looks like.

```
.text, #text, p{  
    color:#B19194  
}
```

If you want to add a text shadow in that color use the text-shadow property, you can generate a text shadow directly with our [CSS Text Shadow Generator](#).

Here you see how black text with a 4 pixel #B19194 colored shadow looks like.

```
.shadow{ text-shadow: 4px 4px 2px #B19194
}
```

## Border

The CSS property to change the border of an element to Hex B19194 is called "border". The border property can be set on classes, ids or directly on the HTML element.

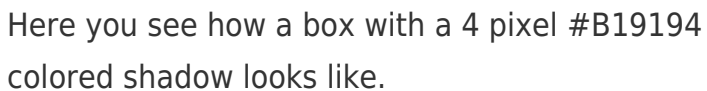
This example shows the color as border, it can be applied via the CSS property "border" or "border-color".

```
.border, #border, table{ border:4px solid
#B19194 }
```

If only the border color should be changed use the property `border-color`.

```
.border{ border-color:#B19194 }
```

If you want to add a box shadow in that color use:



Here you see how a box with a 4 pixel #B19194 colored shadow looks like.

```
.boxshadow{ -moz-box-shadow:4px 4px 4px  
4px #B19194; -webkit-box-shadow:4px 4px  
4px 4px #B19194; box-shadow:4px 4px 4px  
4px #B19194 }
```

# Background

The CSS property to change the background color of an element to Hex B19194 is called "background". The background property can be set on classes, ids or directly on the HTML element.

```
.background, #background, body{  
background:#B19194 }
```

If only the background color should be changed can be used:

```
.background{ background-color:#B19194 }
```

This example shows the color as background, it is applied via the CSS property "background".

To optimize and compress your CSS code, you can use our [online CSS compressor and optimizer](#) based on csstidy. If you want to create a linear or radial gradient as background or border, check our [CSS Gradient Generator](#).



Hey! You found this booklet interesting? Support Converting Colors with the new Membership Option!

The pro membership hides all ads, plus gives you double the colors in the color bucket, and more awesome pro features!

**[Learn more, Memberships starting at \\$2.50/m!](#)**

**Follow me  
on Twitter!**

@ConvertingColor